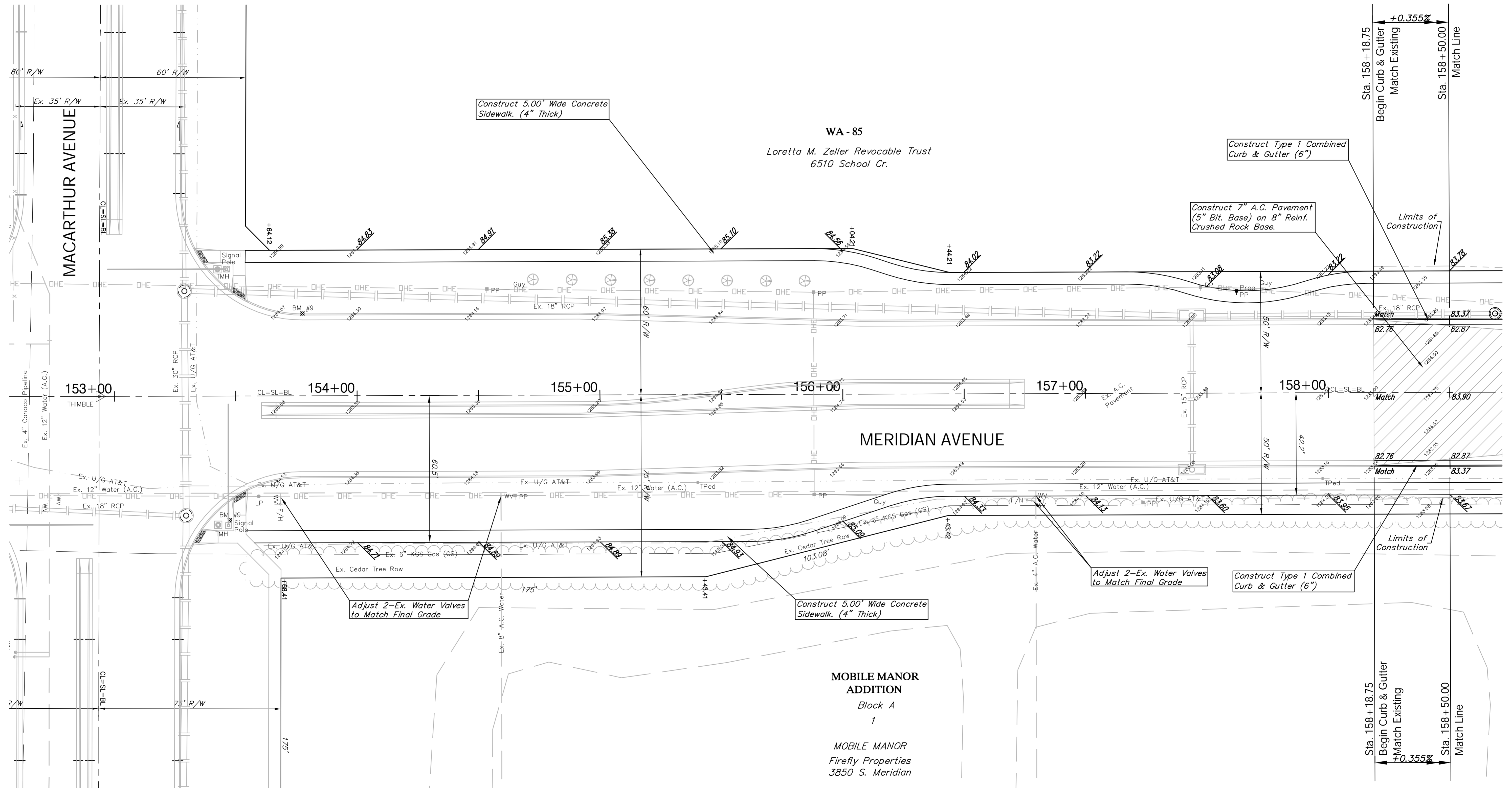



BENCHMARK:  
 BM #9 - "Chiseled in the Top of the North End of the Northwest Curb Return of Meridian & MacArthur Sta. 153+78, 34' Lt. Elev. = 1284.40 MSL

SCALE: 1" = 20'  
 0 10 20



Note:  
 Pavement, Sidewalks, and Etc. To Be Removed Are Indicated By:



Drawing File: E:\eng\Meridian\_47th to 31st\Land\dwg\Base.dwg (Pav10)  
 Project No. 0510E396 CAPITAL IMPROVEMENT PROJECT  
 Design: TPV  
 Drawn: STAFF  
 Approved: TPV  
 Scale: NOTED  
 MERIDIAN AVENUE PAVING  
 Sta. 153+00.00 to Sta. 158+50.00  
 MERIDIAN AVENUE - 47TH STREET SOUTH TO 31ST STREET SOUTH

**Baughman Company, P.A.**  
 315 Ellis St., Wichita, KS 67211 P 316-262-0149 F 316-262-0149  
 ENGINEERING | SURVEYING | PLANNING | LANDSCAPE ARCHITECTURE

September 2009  
 SHEET 27 OF 187