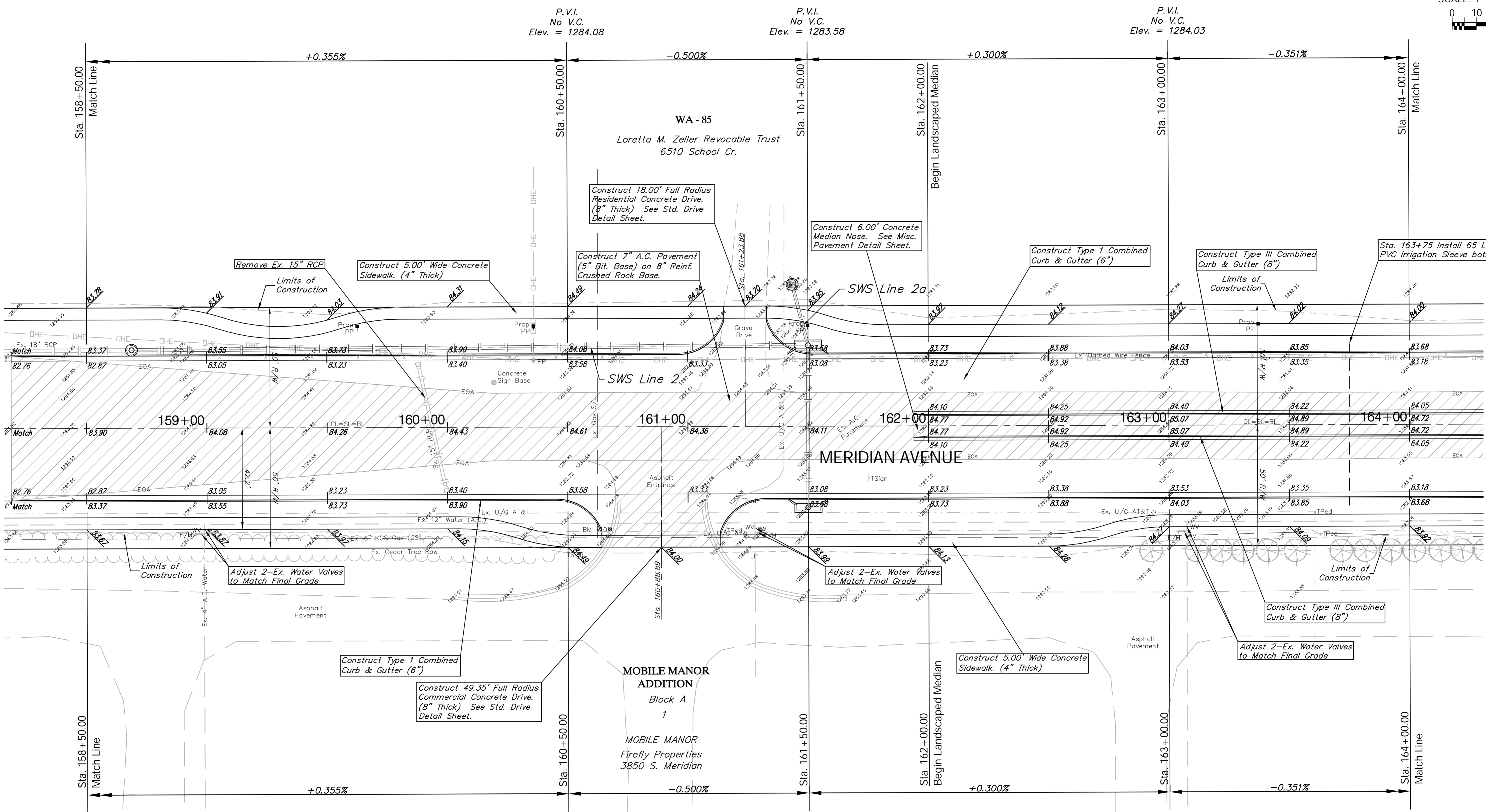
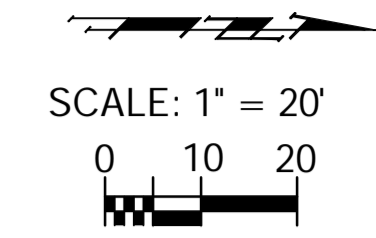
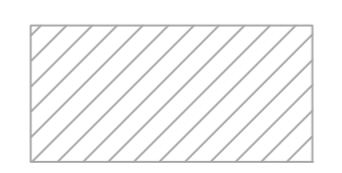


BENCHMARK:
 BM #10 - "C" Chiseled in the Top of the Curb Return of the
 Trailer Park Entrance North of MacArthur
 Sta. 160+68, 43' Rt.
 Elev. = 1284.54 MSL



Note:
 Pavement, Sidewalks, and
 Etc. To Be Removed Are
 Indicated By:



Drawing File: E:\eng\Meridian_47th to 31st\Land\dwg\Base.dwg (Pav11)
 Project No. 0510E396 CAPITAL IMPROVEMENT PROJECT
 Design: TPV
 Drawn: STAFF
 Approved: TPV
 Scale: NOTED
MERIDIAN AVENUE PAVING
 Sta. 158+50.00 to Sta. 164+00.00
 MERIDIAN AVENUE - 47TH STREET SOUTH TO 31ST STREET SOUTH

Baughman Company, P.A.
 315 Ellis St., Wichita, KS 67211 P 316-262-7171 F 316-262-0149
 ENGINEERING | SURVEYING | PLANNING | LANDSCAPE ARCHITECTURE