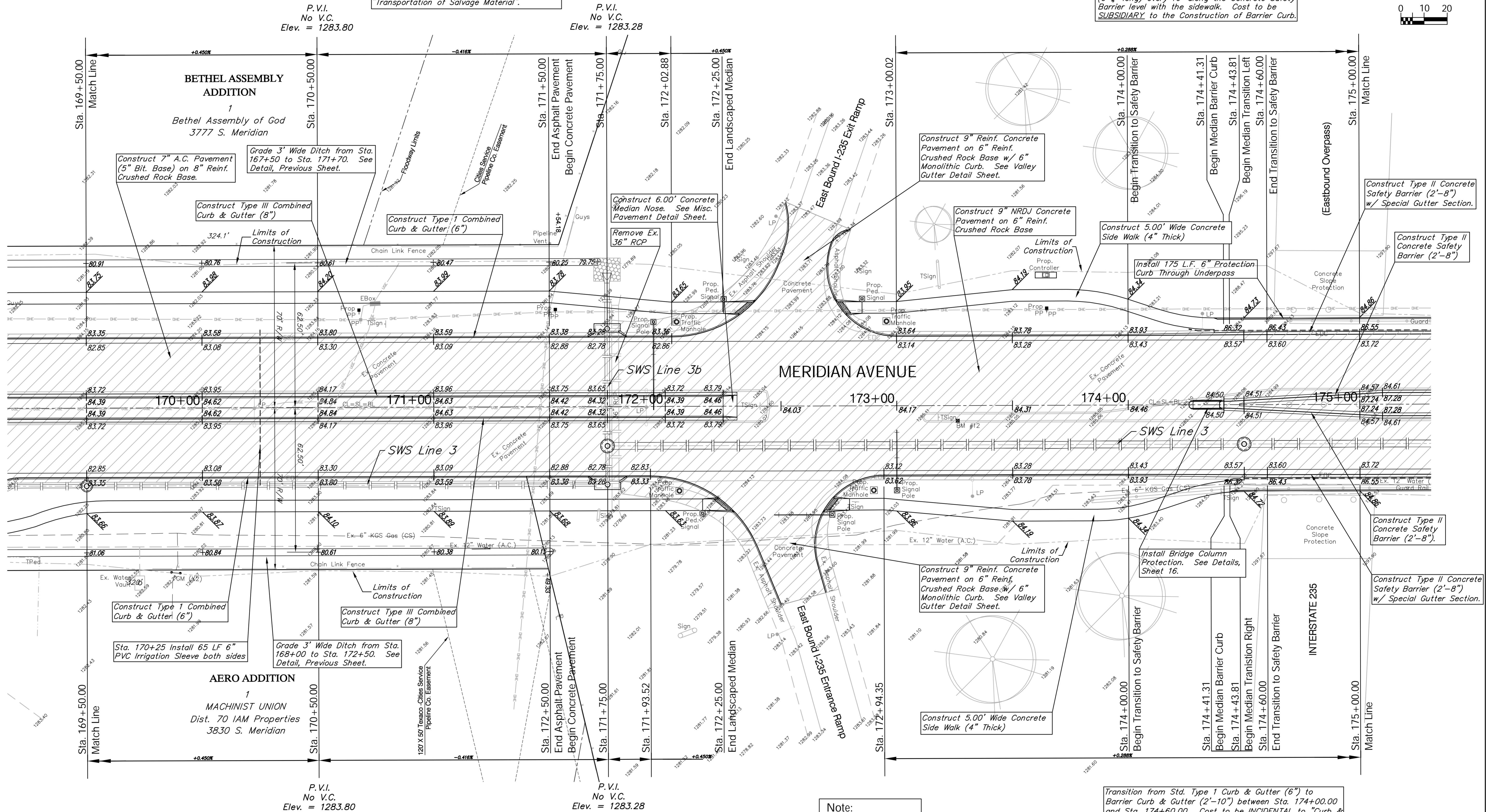
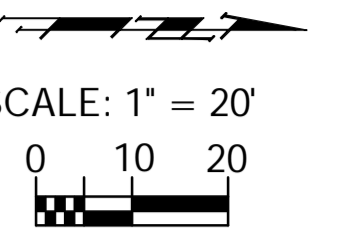


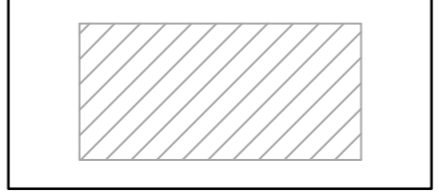
BENCHMARK:
 BM #12 - "C" Chiseled in the Top of the Median Curb South of
 the Interstate 235 Overpass
 Sta. 173+26, 7' Rt.
 Elev. = 1285.07 MSL

Remove Ex. Steel Light Pole at Sta. 171+92,
 1' Rt. & Deliver to the KDOT Yard at 3200
 E. 45th Street N. Contact Ben Koerner with
 KDOT at 744-1271 for more information.
 Cost to be SUBSIDIARY to the Bid Item
 "Transportation of Salvage Material".

The Contractor shall install 3" PVC weepholes
 (9 3/4" long) every 10' along the Concrete Safety
 Barrier level with the sidewalk. Cost to be
 SUBSIDIARY to the Construction of Barrier Curb.



Note:
 Pavement, Sidewalks, and
 Etc. To Be Removed Are
 Indicated By:



Transition from Std. Type 1 Curb & Gutter (6") to
 Barrier Curb & Gutter (2'-10") between Sta. 174+00.00
 and Sta. 174+60.00. Cost to be INCIDENTAL to "Curb &
 Gutter (Combined) (Barrier) (2'-10") (AE)".

Drawing File: E:\eng\Meridian_47th to 31st\Land\dwg\Base.dwg (Pav13)
 Project No. 0510E396 CAPITAL IMPROVEMENT PROJECT
 MERIDIAN AVENUE PAVING
 Sta. 169+50.00 to Sta. 175+00.00
 MERIDIAN AVENUE - 47TH STREET SOUTH TO 31ST STREET SOUTH

Baughman Company, P.A.
 315 Ellis St., Wichita, KS 67211 P 316-262-7171 F 316-262-0149
 ENGINEERING | SURVEYING | PLANNING | LANDSCAPE ARCHITECTURE

REvised 11-30-05
 September 2009
 SHEET
 OF 30
 187