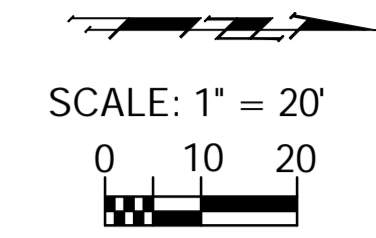


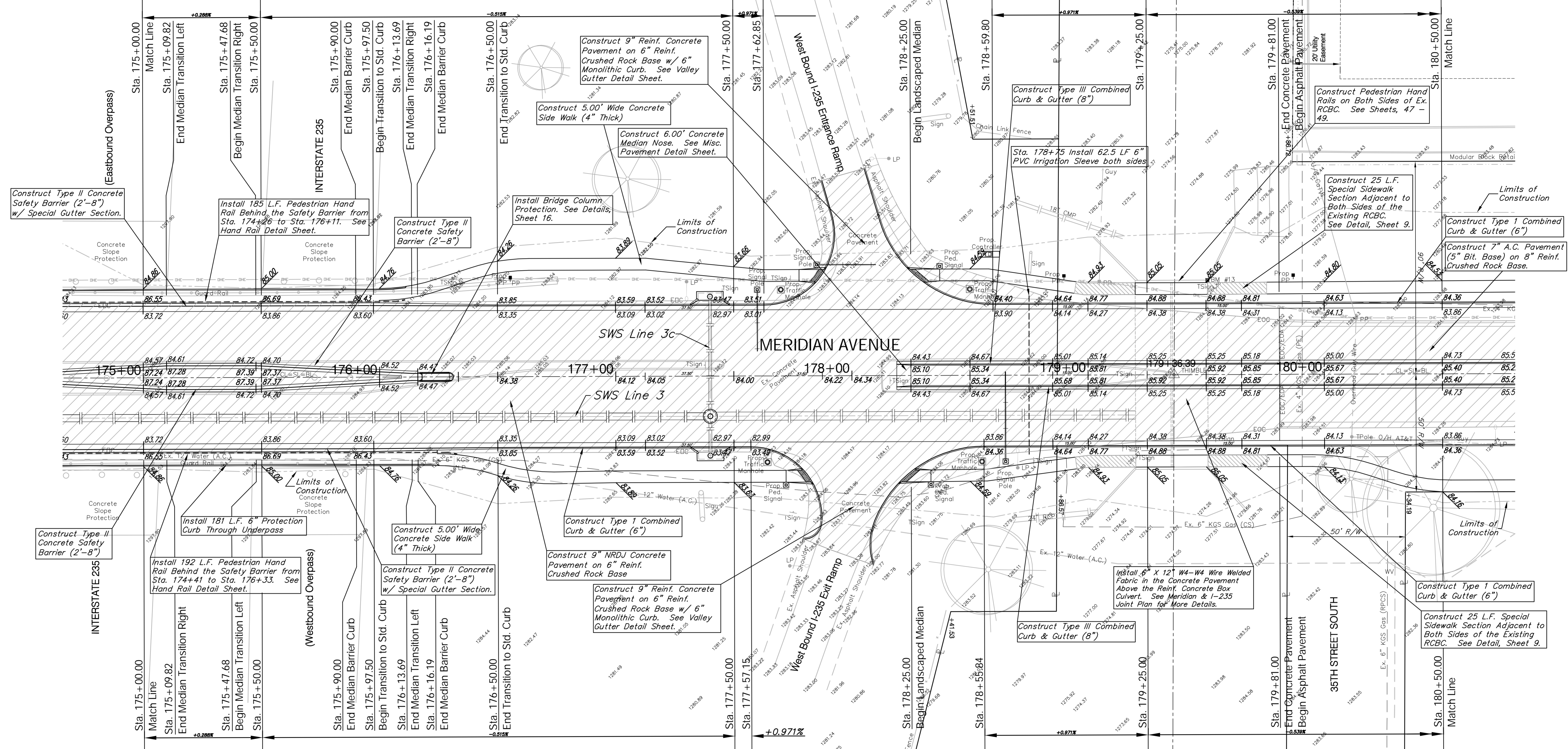
BENCHMARK:
 BM #13 - City of Wichita Disc on the West Hubguard of RCBC
 North of Interstate 235
 Sta. 179+50, 40' Lt.
 Elev. = 1287.55 MSL



P.V.I.
 No V.C.
 Elev. = 1284.36

P.V.I.
 75.00' V.C.
 Elev. = 1283.33

P.V.I.
 80.00' V.C.
 Elev. = 1285.03



Construct Type II Concrete Safety Barrier (2'-8") w/ Special Gutter Section.

Install 185 L.F. Pedestrian Hand Rail Behind the Safety Barrier from Sta. 174+26 to Sta. 176+11. See Hand Rail Detail Sheet.

Construct Type II Concrete Safety Barrier (2'-8")

Install Bridge Column Protection. See Details, Sheet 16.

Construct 6.00' Concrete Median Nose. See Misc. Pavement Detail Sheet.

Construct 5.00' Wide Concrete Side Walk (4" Thick)

Construct 9" Reinf. Concrete Pavement on 6" Reinf. Crushed Rock Base w/ 6" Monolithic Curb. See Valley Gutter Detail Sheet.

Construct Type III Combined Curb & Gutter (8")

Sta. 178+75 Install 62.5 LF 6" PVC Irrigation Sleeve both sides

Construct 25 L.F. Special Sidewalk Section Adjacent to Both Sides of the Existing RCBC. See Detail, Sheet 9.

Construct Type I Combined Curb & Gutter (6")
 Construct 7" A.C. Pavement (5" Bit. Base) on 8" Reinf. Crushed Rock Base.

Construct Type II Concrete Safety Barrier (2'-8")

Install 181 L.F. 6" Protection Curb Through Underpass

Construct 5.00' Wide Concrete Side Walk (4" Thick)

Install 192 L.F. Pedestrian Hand Rail Behind the Safety Barrier from Sta. 174+41 to Sta. 176+33. See Hand Rail Detail Sheet.

Construct Type II Concrete Safety Barrier (2'-8") w/ Special Gutter Section.

Construct Type I Combined Curb & Gutter (6")

Construct 9" NRDJ Concrete Pavement on 6" Reinf. Crushed Rock Base

Construct 9" Reinf. Concrete Pavement on 6" Reinf. Crushed Rock Base w/ 6" Monolithic Curb. See Valley Gutter Detail Sheet.

Install 6" X 12" W4-W4 Wire Welded Fabric in the Concrete Pavement Above the Reinf. Concrete Box Culvert. See Meridian & I-235 Joint Plan for More Details.

Construct Type III Combined Curb & Gutter (8")

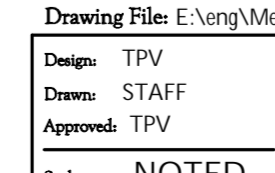
Construct Type I Combined Curb & Gutter (6")

Construct 25 L.F. Special Sidewalk Section Adjacent to Both Sides of the Existing RCBC. See Detail, Sheet 9.

The Contractor shall install 3" PVC weepholes (9 3/4" long) every 10' along the Concrete Safety Barrier level with the sidewalk. Cost to be SUBSIDIARY to the Construction of Barrier Curb.

Transition from Barrier Curb & Gutter (2'-10") to Std. Type I Curb & Gutter (6") between Sta. 175+97.50 and Sta. 176+50.00. Cost to be INCIDENTAL to "Curb & Gutter (Combined) (Barrier) (2'-10") (AE)".

Note:
 Pavement, Sidewalks, and Etc. To Be Removed Are Indicated By:



Drawing File: E:\eng\Meridian_47th to 31st\Land\dwg\Base.dwg (Pav14)
 Project No. 0510E396 CAPITAL IMPROVEMENT PROJECT
 MERIDIAN AVENUE PAVNG
 Sta. 175+00.00 to Sta. 180+50.00
 MERIDIAN AVENUE - 47TH STREET SOUTH TO 31ST STREET SOUTH
 Scale: NOTED

Baughman Company, P.A.
 315 Ellis St., Wichita, KS 67211 P 316-262-7171 F 316-262-0149
 ENGINEERING | SURVEYING | PLANNING | LANDSCAPE ARCHITECTURE

REVISED 11-30-05

September 2009
 SHEET
 OF 31
 187