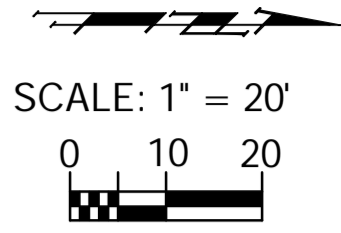
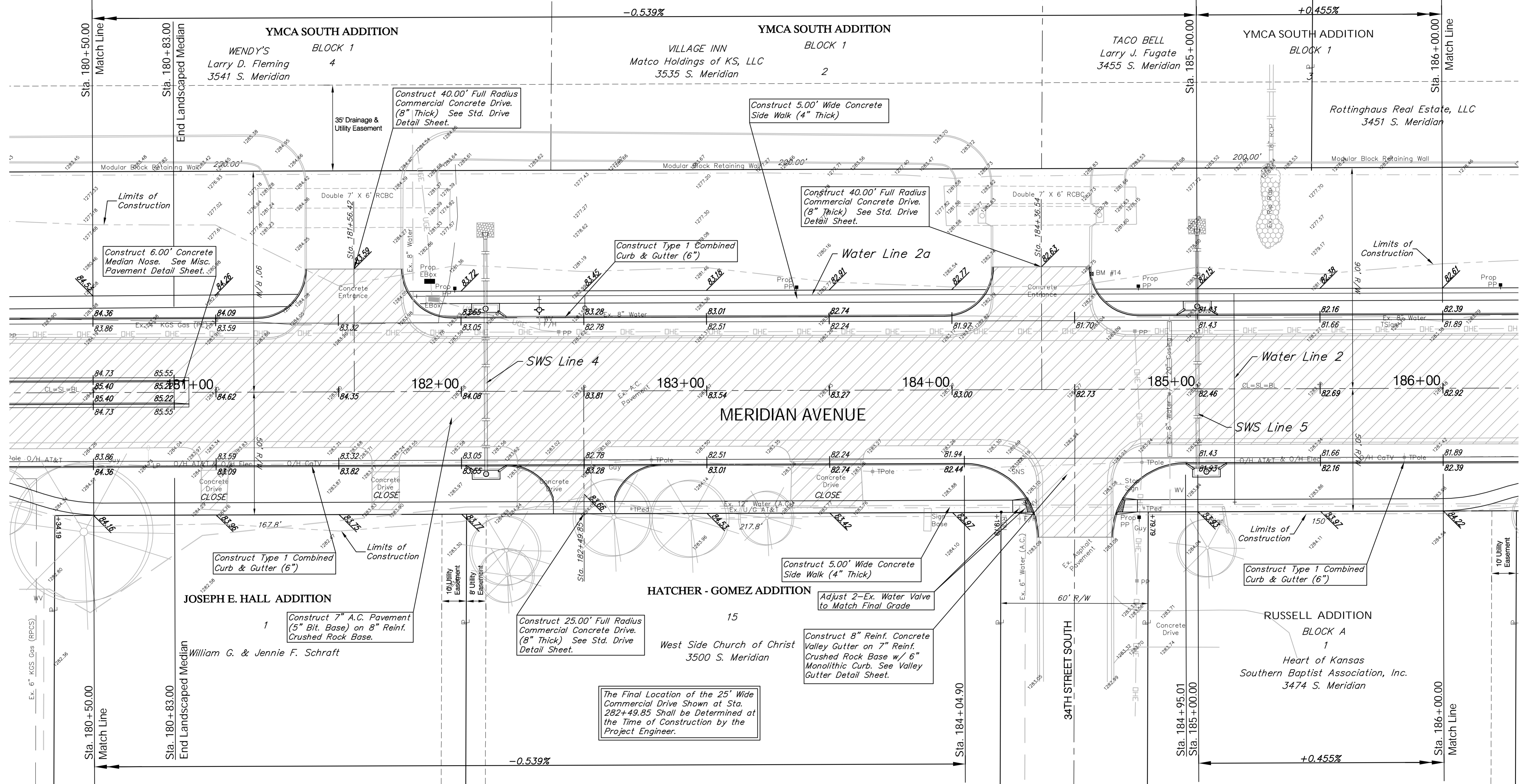


BENCHMARK:
 BM #14 - "C" Chiseled in the Top of the North Curb Return of the Second Concrete Entrance North of Interstate 235 on the West Side of Meridian Sta. 184+57, 47' Lt. Elev. = 1282.75 MSL

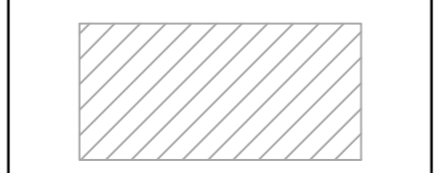


P.V.I.
 No V.C.
 Elev. = 1281.93



P.V.I.
 No V.C.
 Elev. = 1281.93

Note:
 Pavement, Sidewalks, and Etc. To Be Removed Are Indicated By:



Drawing File: E:\eng\Meridian_47th to 31st\Land\dwg\Base.dwg (Pav15)
 Project No. 0510E396 CAPITAL IMPROVEMENT PROJECT
 Design: TPV
 Drawn: STAFF
 Approved: TPV
 Scale: NOTED
MERIDIAN AVENUE PAVING
 Sta. 180+50.00 to Sta. 186+00.00
 MERIDIAN AVENUE - 47TH STREET SOUTH TO 31ST STREET SOUTH

Baughman Company, P.A.
 315 Ellis St., Wichita, KS 67211 P 316-262-7171 F 316-262-0149
 ENGINEERING | SURVEYING | PLANNING | LANDSCAPE ARCHITECTURE