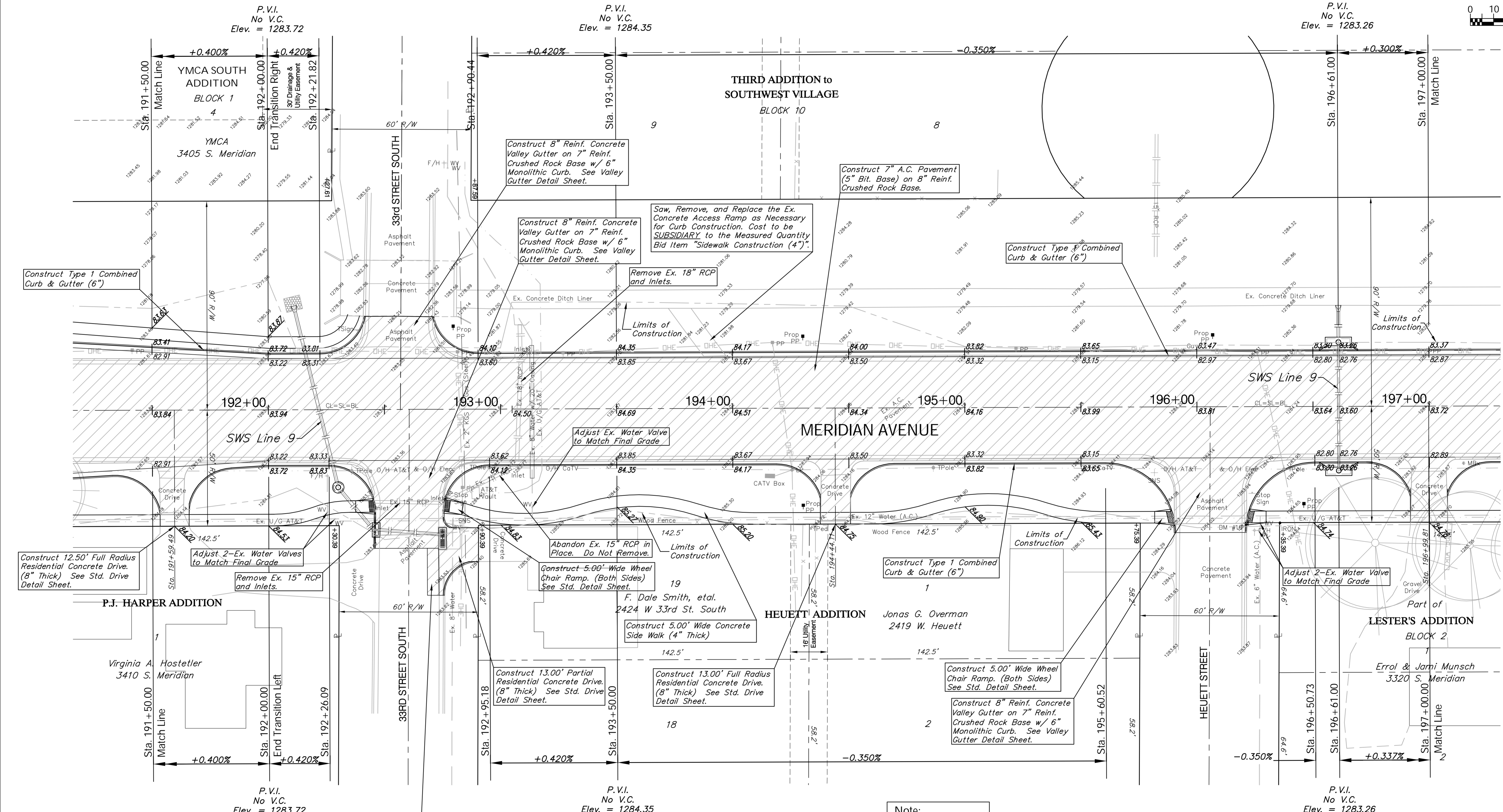
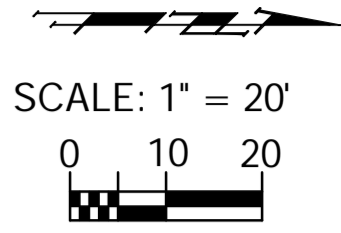
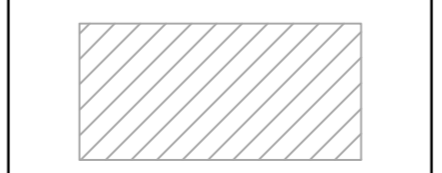


BENCHMARK:
 BM #16 - "Chiseled in the Top of the North Curb Return in the Northwest Corner of Meridian and Heuett Street Sta. 196+21, 50' Rt. Elev. = 1283.90 MSL"



Note:
 Pavement, Sidewalks, and Etc. To Be Removed Are Indicated By:



Drawing File: E:\eng\Meridian_47th to 31st\Land\dwg\Base.dwg (Pav17)
 Project No. 0510E396 CAPITAL IMPROVEMENT PROJECT
 MERIDIAN AVENUE PAVNG
 Sta. 191+50.00 to Sta. 197+00.00
 Scale: NOTED

Baughman Company, P.A.
 315 Ellis St., Wichita, KS 67211 P 316-262-0149 F 316-262-0149
 ENGINEERING | SURVEYING | PLANNING | LANDSCAPE ARCHITECTURE