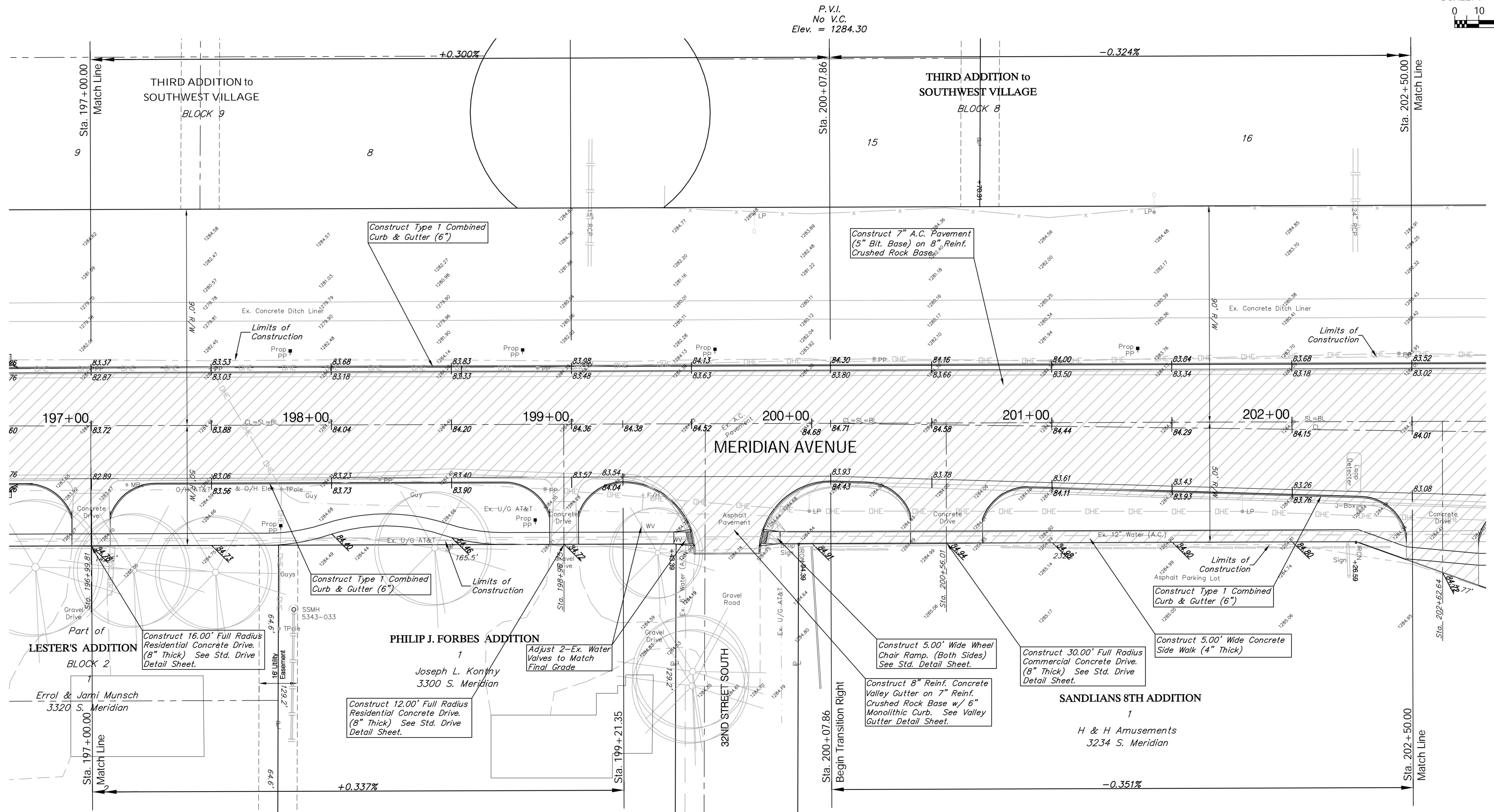
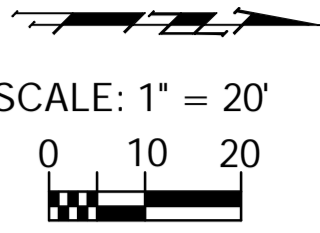


BENCHMARK:
 BM #16 - "C" Chiseled in the Top of the North Curb Return in
 the Northwest Corner of Meridian and Heuett Street
 Sta. 196+21, 50' Rt.
 Elev. = 1283.90 MSL



Note:
 Pavement, Sidewalks, and
 Etc. To Be Removed Are
 Indicated By:

Drawing File: E:\eng\Meridian_47th to 31st\Land\dwg\Base.dwg (Pav18)
 Design: TPV
 Drawn: STAFF
 Approved: TPV
 Scale: NOTED

Project No. 0510E396 CAPITAL IMPROVEMENT PROJECT
 MERIDIAN AVENUE PAVING
 Sta. 197+00.00 to Sta. 202+50.00
 MERIDIAN AVENUE - 47TH STREET SOUTH - 31ST STREET SOUTH

Baughman Company, P.A.
 315 Ellis St., Wichita, KS 67211 P 316-262-0149 F 316-262-0149
 Baughman ENGINEERING | SURVEYING | PLANNING | LANDSCAPE ARCHITECTURE

September 2009
 SHEET
 OF 187