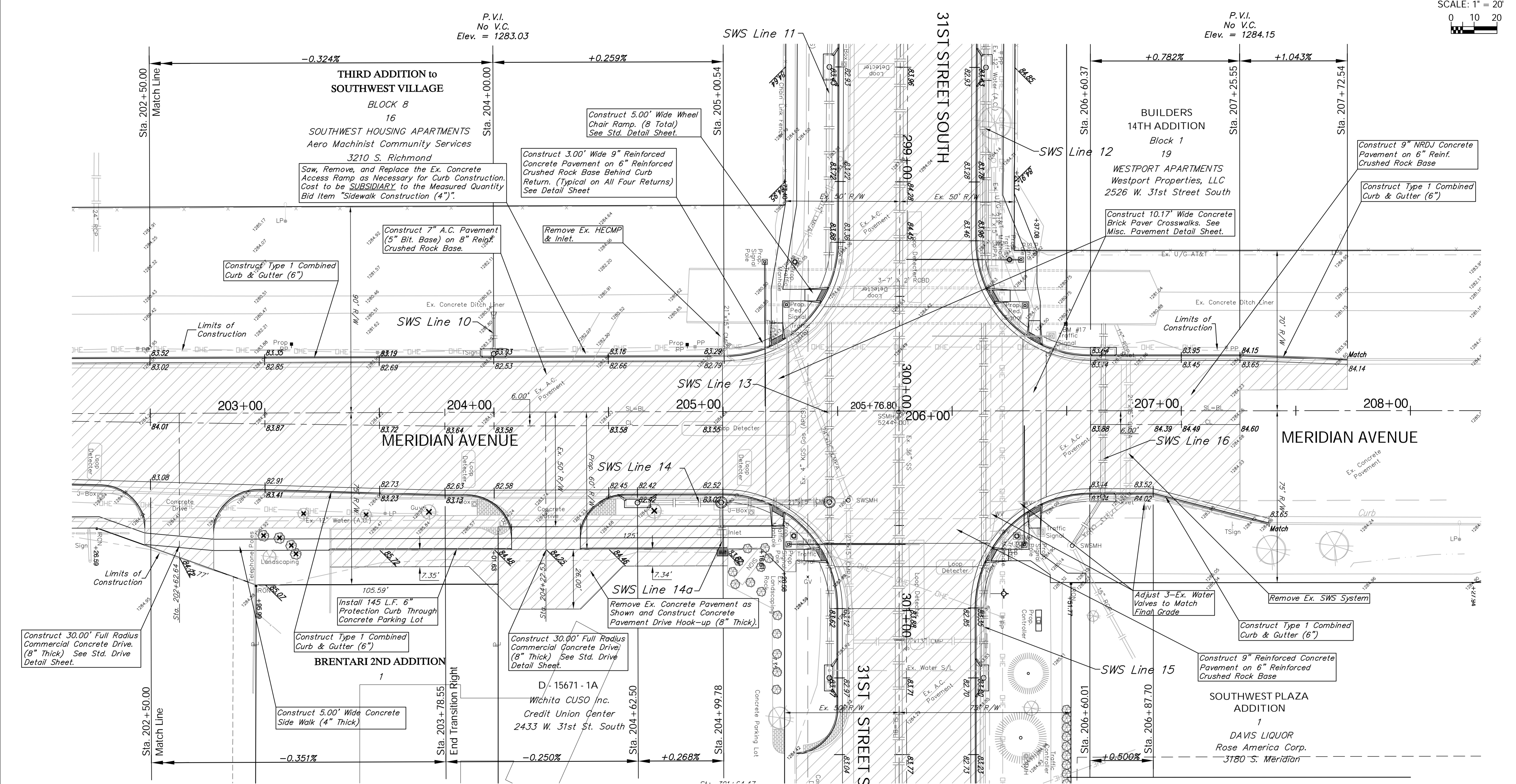
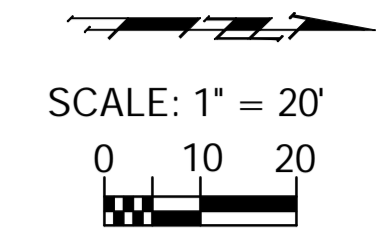


BENCHMARK:
 BM #17 - City of Wichita Disc on the North Hubguard of the
 RCBC in the Northwest Corner of the Intersection of
 Meridian and 31st Street North
 Sta. 206+50, 40' Lt.
 Elev. = 1284.28 MSL



Construct 30.00' Full Radius Commercial Concrete Drive. (8" Thick) See Std. Drive Detail Sheet.

Saw, Remove, and Replace the Ex. Concrete Access Ramp as Necessary for Curb Construction. Cost to be SUBSIDIARY to the Measured Quantity Bid Item "Sidewalk Construction (4)".

Construct 3.00' Wide 9" Reinforced Concrete Pavement on 6" Reinforced Crushed Rock Base Behind Curb Return. (Typical on All Four Returns) See Detail Sheet

Construct 5.00' Wide Wheel Chair Ramp. (8 Total) See Std. Detail Sheet.

Construct 7" A.C. Pavement (5" Bit. Base) on 8" Reinf. Crushed Rock Base.

Remove Ex. HECMP & Inlet.

Construct Type 1 Combined Curb & Gutter (6")

Construct 10.17' Wide Concrete Brick Paver Crosswalks. See Misc. Pavement Detail Sheet.

Construct 9" NRDJ Concrete Pavement on 6" Reinf. Crushed Rock Base

Construct Type 1 Combined Curb & Gutter (6")

Install 145 L.F. 6" Protection Curb Through Concrete Parking Lot

Construct 30.00' Full Radius Commercial Concrete Drive. (8" Thick) See Std. Drive Detail Sheet.

Remove Ex. Concrete Pavement as Shown and Construct Concrete Pavement Drive Hook-up (8" Thick).

Construct 5.00' Wide Concrete Side Walk (4" Thick)

Construct 9" Reinforced Concrete Pavement on 6" Reinforced Crushed Rock Base

Construct Type 1 Combined Curb & Gutter (6")

SOUTHWEST PLAZA ADDITION
 1
 DAVIS LIQUOR
 Rose America Corp.
 3180 S. Meridian

Note:
 Trees/Shrubs to be removed are marked thus:

Note:
 Pavement, Sidewalks, and Etc. To Be Removed Are Indicated By:

Drawing File: E:\eng\Meridian_47th to 31st\Land\dwg\Base.dwg (Pav19)
 Project No. 0510E396 CAPITAL IMPROVEMENT PROJECT
 Design: TPV
 Drawn: STAFF
 Approved: TPV
 Scale: NOTED

MERIDIAN AVENUE PAVNG
 Sta. 202+50.00 to Sta. 208+00.00
 MERIDIAN AVENUE - 47TH STREET SOUTH to 31ST STREET SOUTH

Baughman Company, P.A.
 315 Ellis St., Wichita, KS 67211 P 316-262-7171 F 316-262-0149
 ENDSERVICES | SURVEYING | PLANNING | LANDSCAPE ARCHITECTURE

September 2009
 SHEET
 OF 36
 187