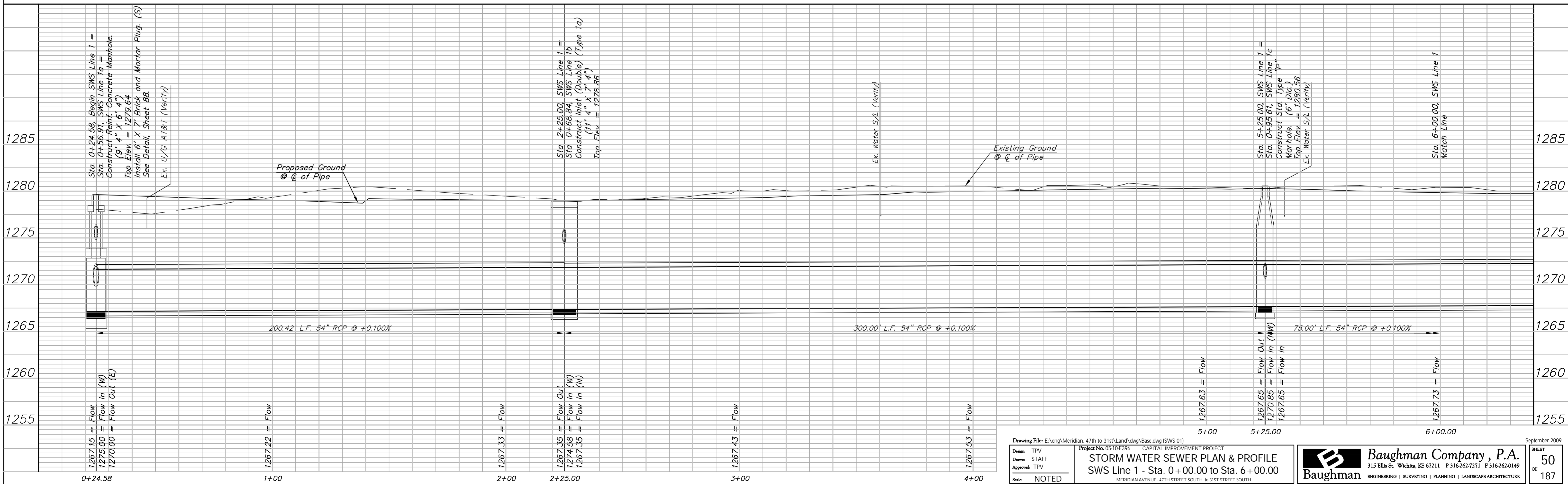
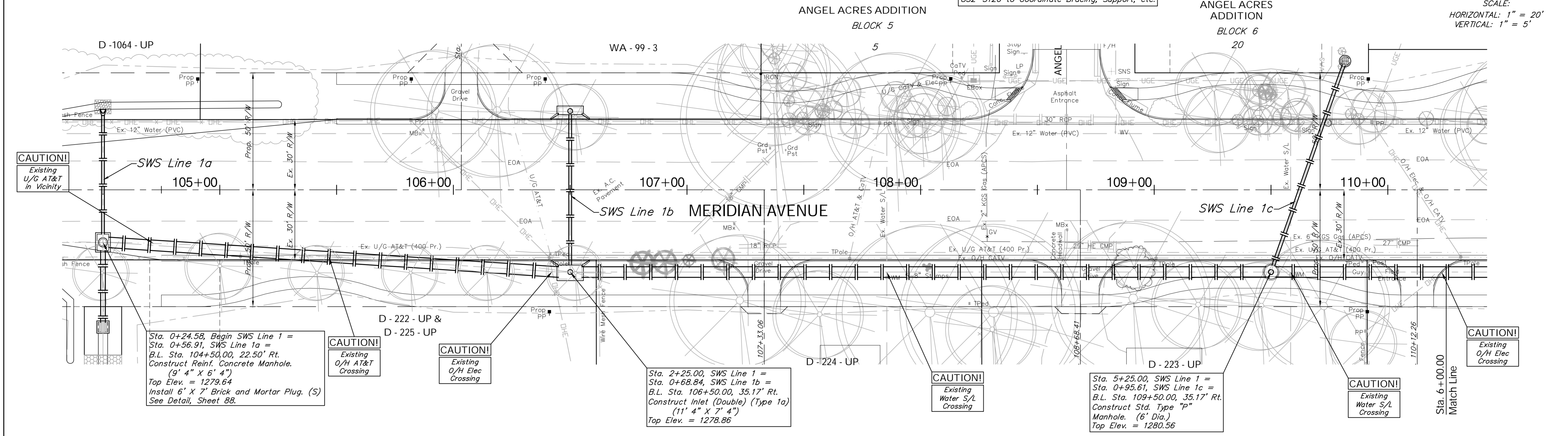


BENCHMARK:
 BM #2 - "U" Chiseled in the Back of Curb in the North
 Curb Line of Angell
 Sta. 108+77, 154' Lt.
 Elev. = 1281.74 MSL

The Existing 6" Kansas Gas Line Running
 Parallel to the Proposed SWS System is to
 Remain in Place During Construction. The
 Contractor Shall Contact Jim Coe with KGS at
 832-3126 to Coordinate Bracing, Support, etc.

SCALE:
 HORIZONTAL: 1" = 20'
 VERTICAL: 1" = 5'



Drawing File: E:\eng\Meridian_47th to 31st\Land\dwg\Base.dwg (SWS 01)
 Project No. 0510E396 CAPITAL IMPROVEMENT PROJECT
STORM WATER SEWER PLAN & PROFILE
 SWS Line 1 - Sta. 0+00.00 to Sta. 6+00.00
 MERIDIAN AVENUE - 47TH STREET SOUTH TO 31ST STREET SOUTH
 Design: TPV
 Drawn: STAFF
 Approved: TPV
 Scale: NOTED

Baughman Company, P.A.
 315 Ellis St., Wichita, KS 67211 P 316-262-7171 F 316-262-0149
 ENGINEERING | SURVEYING | PLANNING | LANDSCAPE ARCHITECTURE

September 2009
 SHEET
 OF
 50
 187