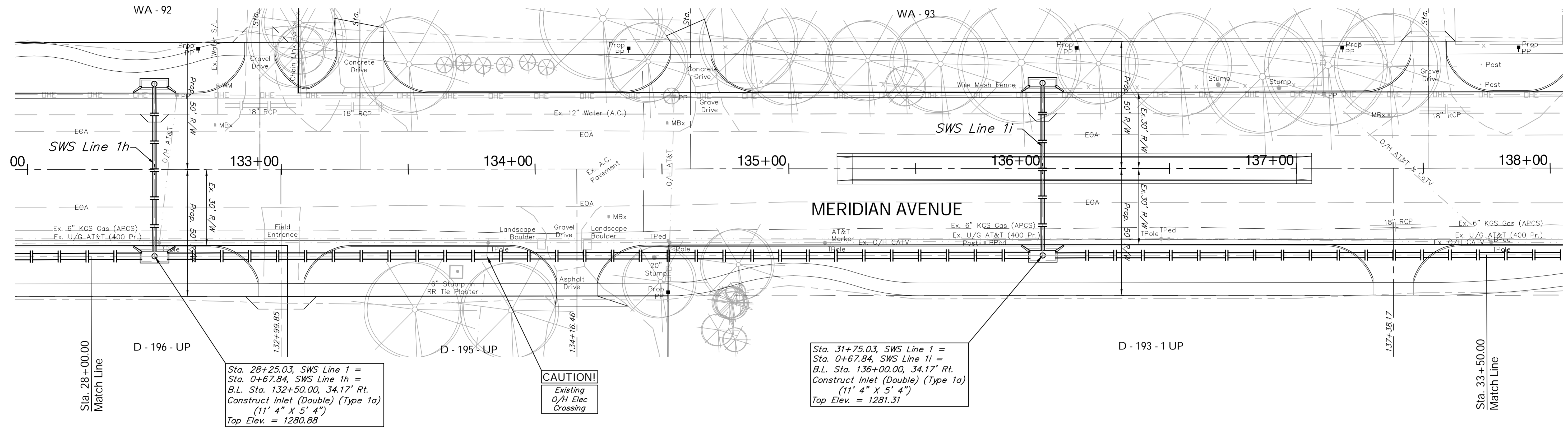


BENCHMARK:
 BM #6 - "C" Chiseled in the Base at the South End of the Concrete Privacy Wall
 Sta. 139+69, 52' Rt.
 Elev. = 1282.88 MSL

The Existing 6" Kansas Gas Line Running Parallel to the Proposed SWS System is to Remain in Place During Construction. The Contractor Shall Contact Jim Coe with KGS at 832-3126 to Coordinate Bracing, Support, etc.

SCALE:
 HORIZONTAL: 1" = 20'
 VERTICAL: 1" = 5'



Sta. 28+25.03, SWS Line 1 =
 Sta. 0+67.84, SWS Line 1h =
 B.L. Sta. 132+50.00, 34.17' Rt.
 Construct Inlet (Double) (Type 1a)
 (11' 4" X 5' 4")
 Top Elev. = 1280.88

CAUTION!
 Existing
 O/H Elec
 Crossing

Sta. 31+75.03, SWS Line 1 =
 Sta. 0+67.84, SWS Line 1i =
 B.L. Sta. 136+00.00, 34.17' Rt.
 Construct Inlet (Double) (Type 1a)
 (11' 4" X 5' 4")
 Top Elev. = 1281.31

