

BENCHMARK:
 BM #11 - "I" Chiseled in the Top of the Curb on the South Side of Median at Church Entrance
 Sta. 166+69, 56' Lt.
 Elev. = 1285.34 MSL

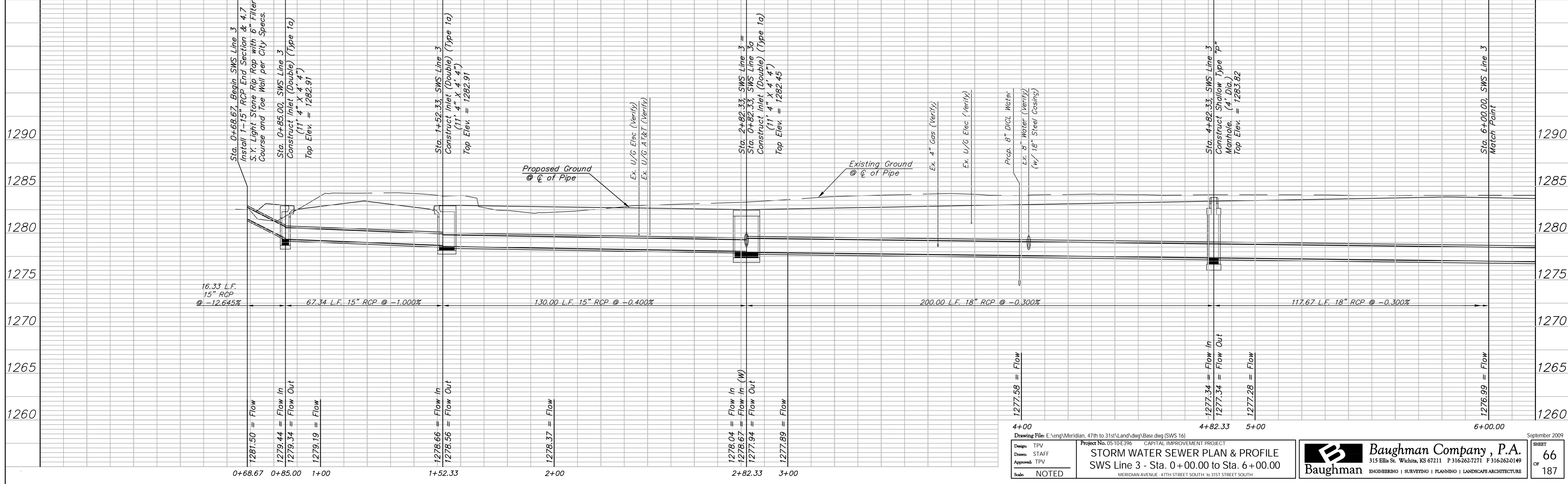
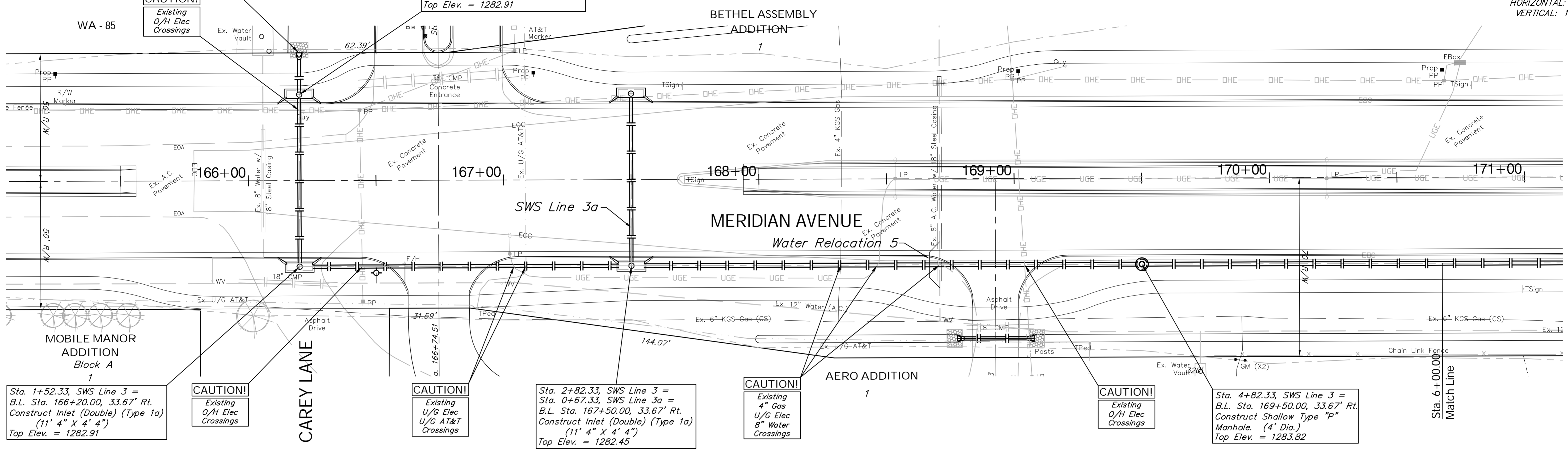
Sta. 0+68.67, Begin SWS Line 3 =
 B.L. Sta. 167+20.00, 50.00' Lt.
 Install 1-15" RCP End Section & 4.7
 S.Y. Light Stone Rip Rap with 6" Filter
 Course and Toe Wall per City Specs.

Sta. 0+85.00, SWS Line 3 =
 B.L. Sta. 166+20.00, 33.67' Lt.
 Construct Inlet (Double) (Type 1a)
 (11' 4" X 4' 4")
 Top Elev. = 1282.91

Sta. 2+82.33, SWS Line 3 =
 Sta. 0+67.33, SWS Line 3a =
 B.L. Sta. 167+50.00, 33.67' Rt.
 Construct Inlet (Double) (Type 1a)
 (11' 4" X 4' 4")
 Top Elev. = 1282.45

Sta. 4+82.33, SWS Line 3 =
 B.L. Sta. 169+50.00, 33.67' Rt.
 Construct Shallow Type "P"
 Manhole. (4' Dia.)
 Top Elev. = 1283.82

SCALE:
 HORIZONTAL: 1" = 20'
 VERTICAL: 1" = 5'



4+00
 Drawing File: E:\eng\Meridian_47th to 31st\Land\dwg\Base.dwg (SWS 16)
 Project No. 0510E396 CAPITAL IMPROVEMENT PROJECT
 STORM WATER SEWER PLAN & PROFILE
 SWS Line 3 - Sta. 0+00.00 to Sta. 6+00.00
 MERIDIAN AVENUE - 47TH STREET SOUTH TO 31ST STREET SOUTH

Design: TPV
 Drawn: STAFF
 Approved: TPV
 Scale: NOTED

Baughman Company, P.A.
 315 Ellis St., Wichita, KS 67211 P 316-262-0149 F 316-262-0149
 ENGINEERING | SURVEYING | PLANNING | LANDSCAPE ARCHITECTURE

SEPTEMBER 2009
 SHEET 66 OF 187