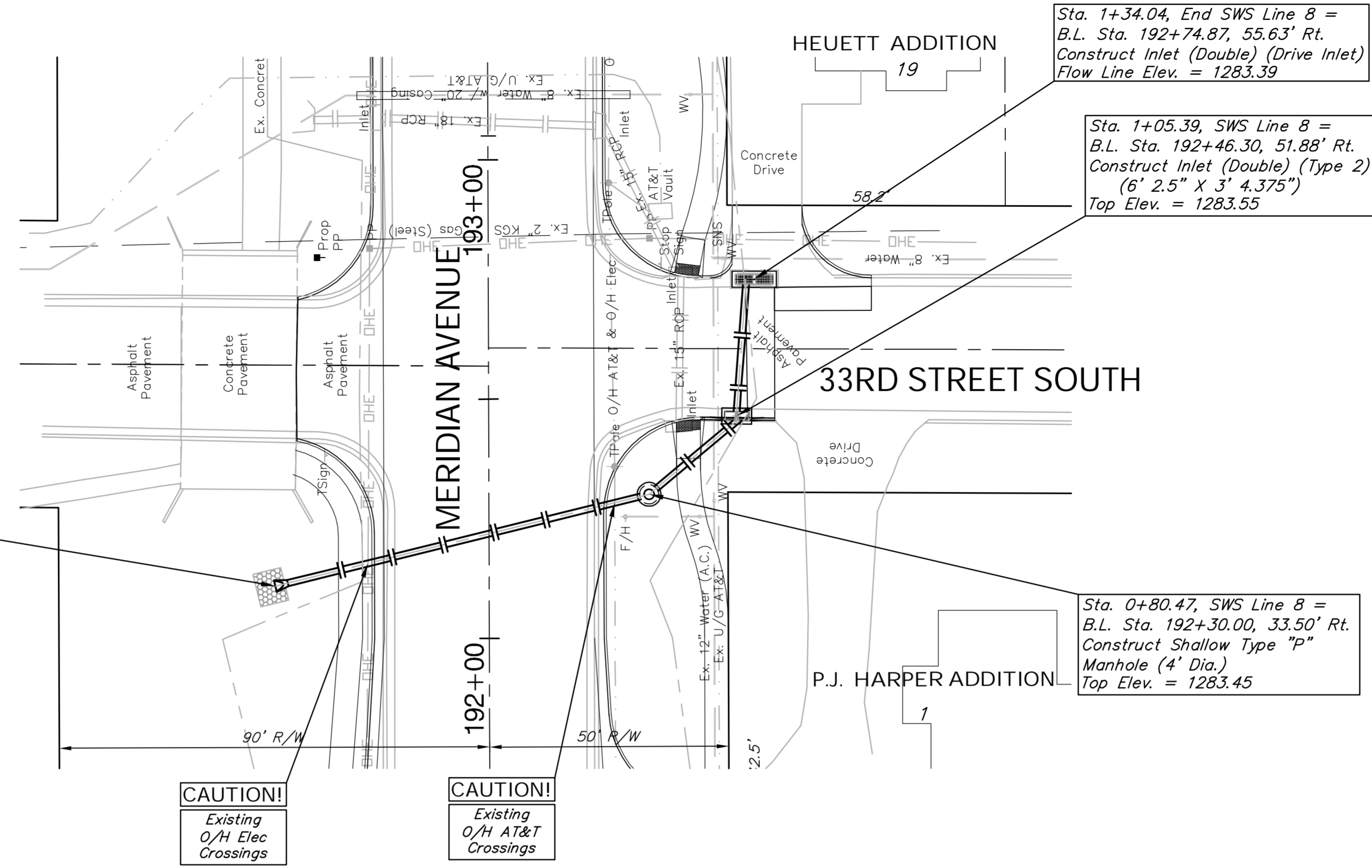
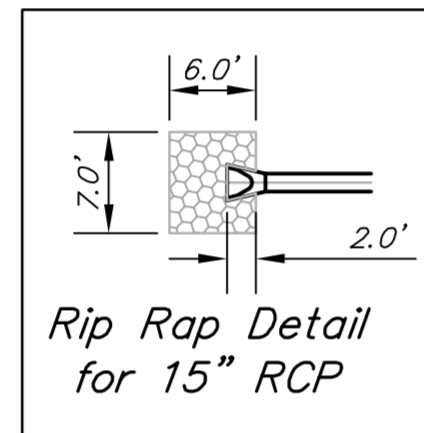
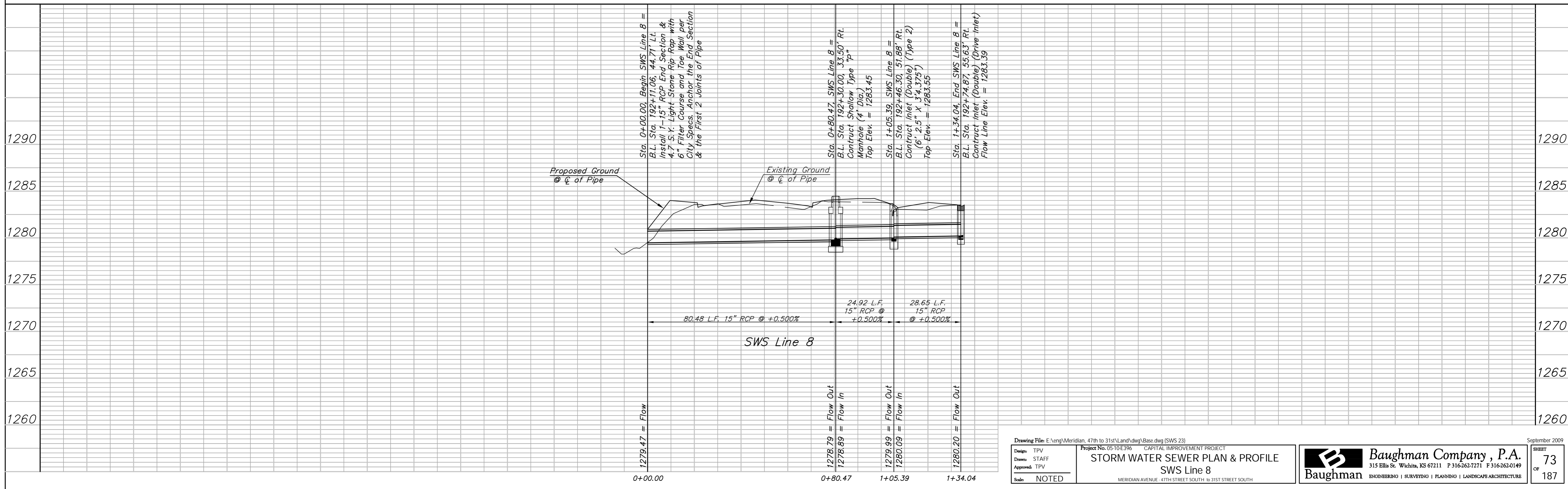


BENCHMARK:  
 BM #15 - "C" Chiseled in the Northeast Corner of the RCBC  
 Under the YMCA Entrance  
 Sta. 190+61, 68' Rt.  
 Elev. = 1282.23 MSL

Sta. 0+00.00, Begin SWS Line 8 =  
 B.L. Sta. 192+11.06, 44.71' Lt.  
 Install 1-15" RCP End Section &  
 4.7 S.Y. Light Stone Rip Rap with  
 6" Filter Course and Toe Wall per  
 City Specs. Anchor the End Section  
 & the First 2 Joints of Pipe.



SCALE:  
 HORIZONTAL: 1" = 20'  
 VERTICAL: 1" = 5'



Drawing File: E:\eng\Meridian\_47th to 31st\Land\dwg\Base.dwg (SWS 23)  
 Project No. 0510E396 CAPITAL IMPROVEMENT PROJECT  
 Design: TPV  
 Drawn: STAFF  
 Approved: TPV  
 Scale: NOTED  
 STORM WATER SEWER PLAN & PROFILE  
 SWS Line 8  
 MERIDIAN AVENUE - 47TH STREET SOUTH - 31ST STREET SOUTH

**Baughman Company, P.A.**  
 315 Ellis St., Wichita, KS 67211 P 316-262-0149 F 316-262-0149  
 ENGINEERING | SURVEYING | PLANNING | LANDSCAPE ARCHITECTURE

September 2009  
 SHEET 73 OF 187