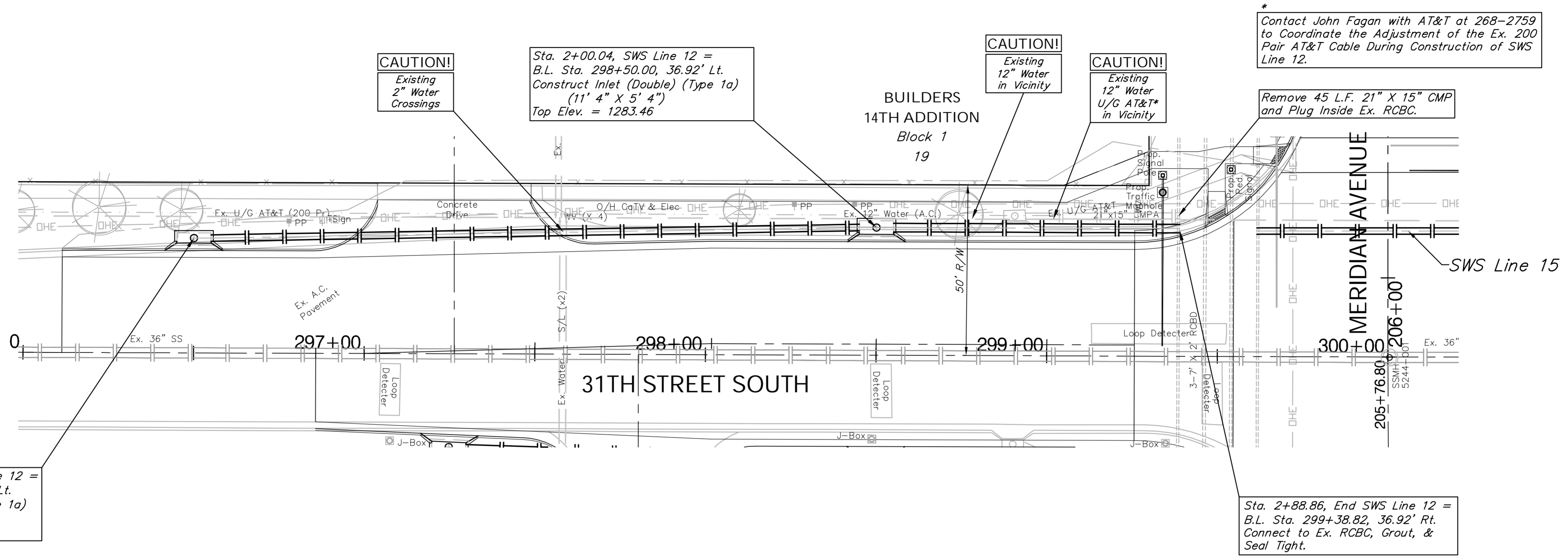


BENCHMARK:  
 BM #17 - City of Wichita Disc on the North Hubguard of the  
 RCBC in the Northwest Corner of the Intersection of  
 Meridian and 31st Street North  
 Sta. 206+50, 40' Lt.  
 Elev. = 1284.28 MSL



SCALE:  
 HORIZONTAL: 1" = 20'  
 VERTICAL: 1" = 5'

Sta. 0+00.00, Begin SWS Line 12 =  
 B.L. Sta. 296+50.00, 33.67' Lt.  
 Construct Inlet (Double) (Type 1a)  
 (11' 4" X 4' 4")  
 Top Elev. = 1283.96

CAUTION!  
 Existing  
 2" Water  
 Crossings

Sta. 2+00.04, SWS Line 12 =  
 B.L. Sta. 298+50.00, 36.92' Lt.  
 Construct Inlet (Double) (Type 1a)  
 (11' 4" X 5' 4")  
 Top Elev. = 1283.46

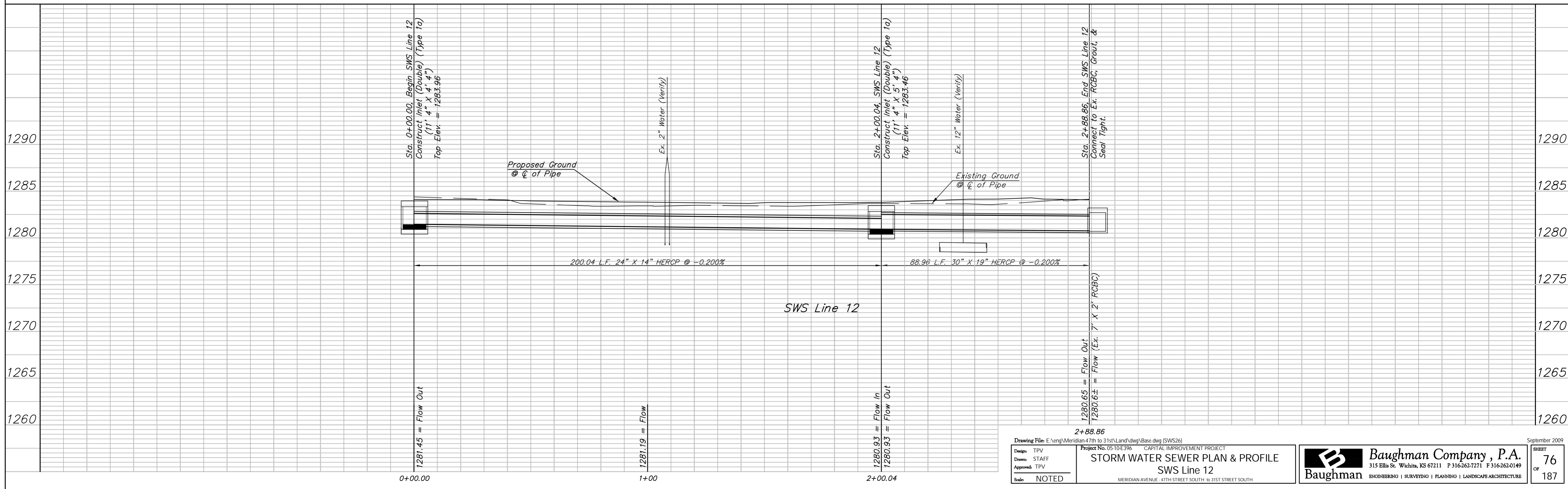
CAUTION!  
 Existing  
 12" Water  
 in Vicinity

CAUTION!  
 Existing  
 12" Water  
 U/G AT&T\*  
 in Vicinity

\*Contact John Fagan with AT&T at 268-2759  
 to Coordinate the Adjustment of the Ex. 200  
 Pair AT&T Cable During Construction of SWS  
 Line 12.

Remove 45 L.F. 21" X 15" CMP  
 and Plug Inside Ex. RCBC.

Sta. 2+88.86, End SWS Line 12 =  
 B.L. Sta. 299+38.82, 36.92' Rt.  
 Connect to Ex. RCBC, Grout, &  
 Seal Tight.



Drawing File: E:\eng\Meridian\47th to 31st\Land\dwg\Base.dwg (SWS26)  
 Project No. 0510E396 CAPITAL IMPROVEMENT PROJECT  
**STORM WATER SEWER PLAN & PROFILE**  
 SWS Line 12  
 MERIDIAN AVENUE - 47TH STREET SOUTH TO 31ST STREET SOUTH  
 Scale: NOTED

**Baughman Company, P.A.**  
 315 Ellis St., Wichita, KS 67211 P 316-262-7171 F 316-262-0149  
 ENGINEERING | SURVEYING | PLANNING | LANDSCAPE ARCHITECTURE

September 2009  
 SHEET  
 OF 76  
 187