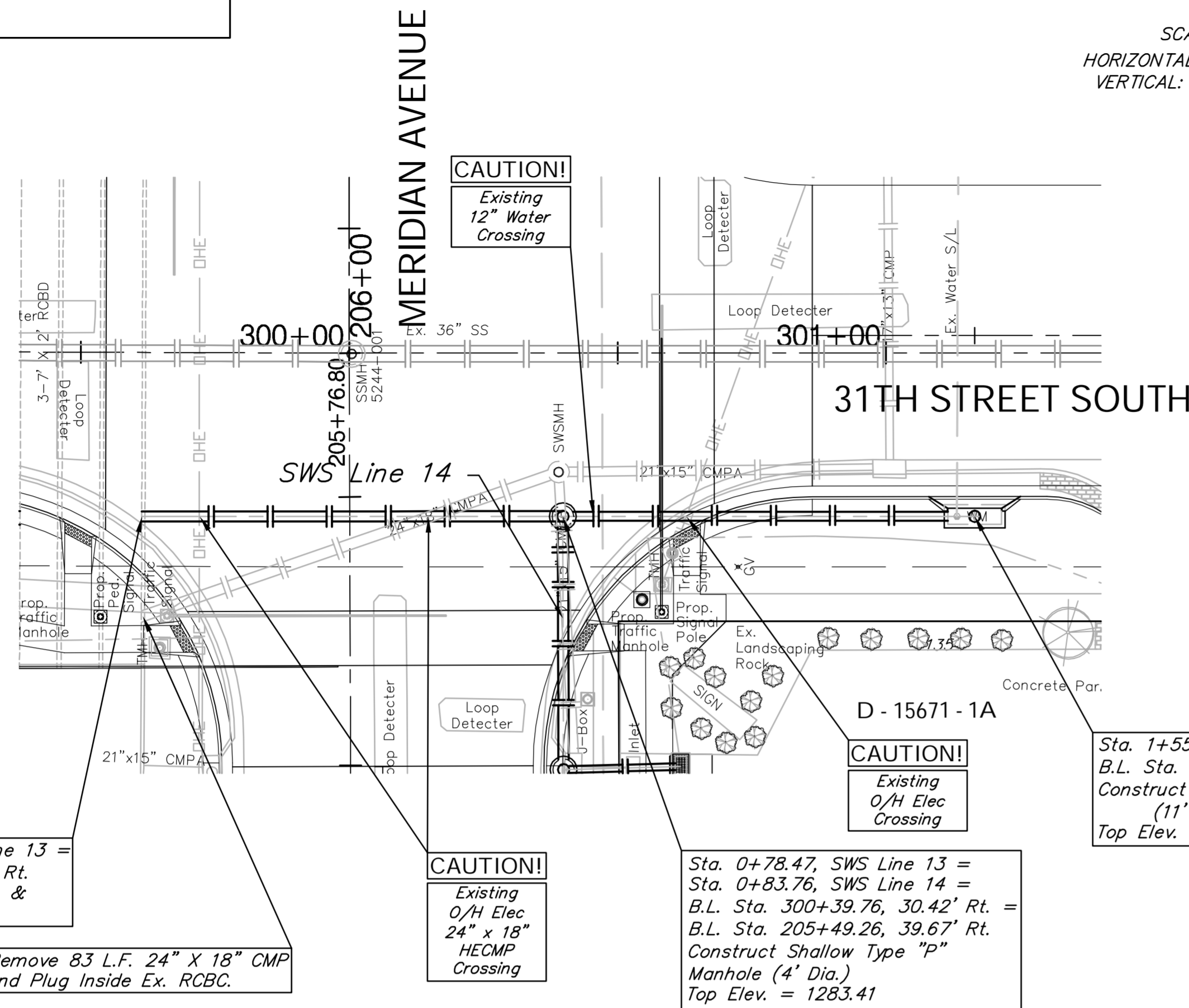


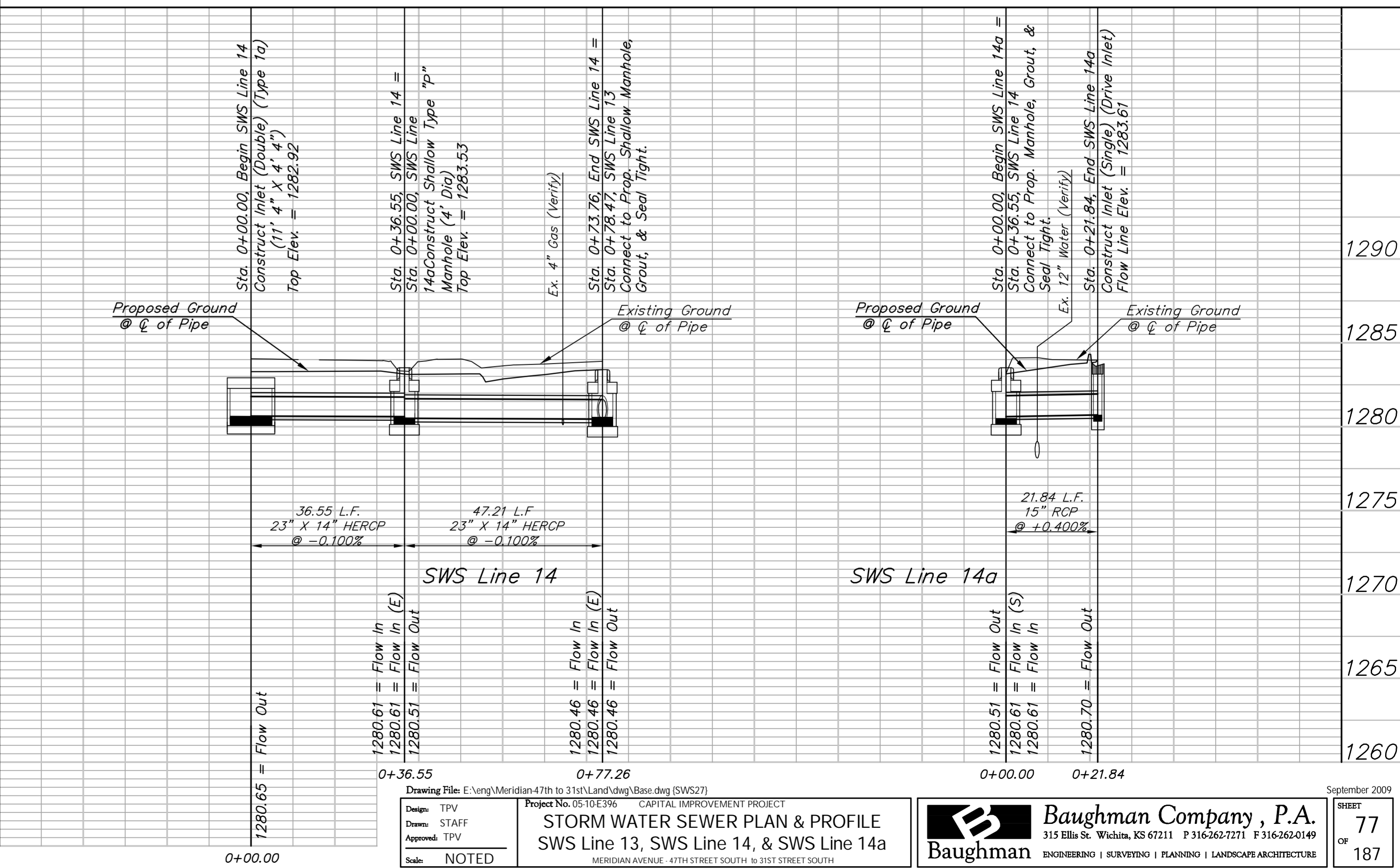
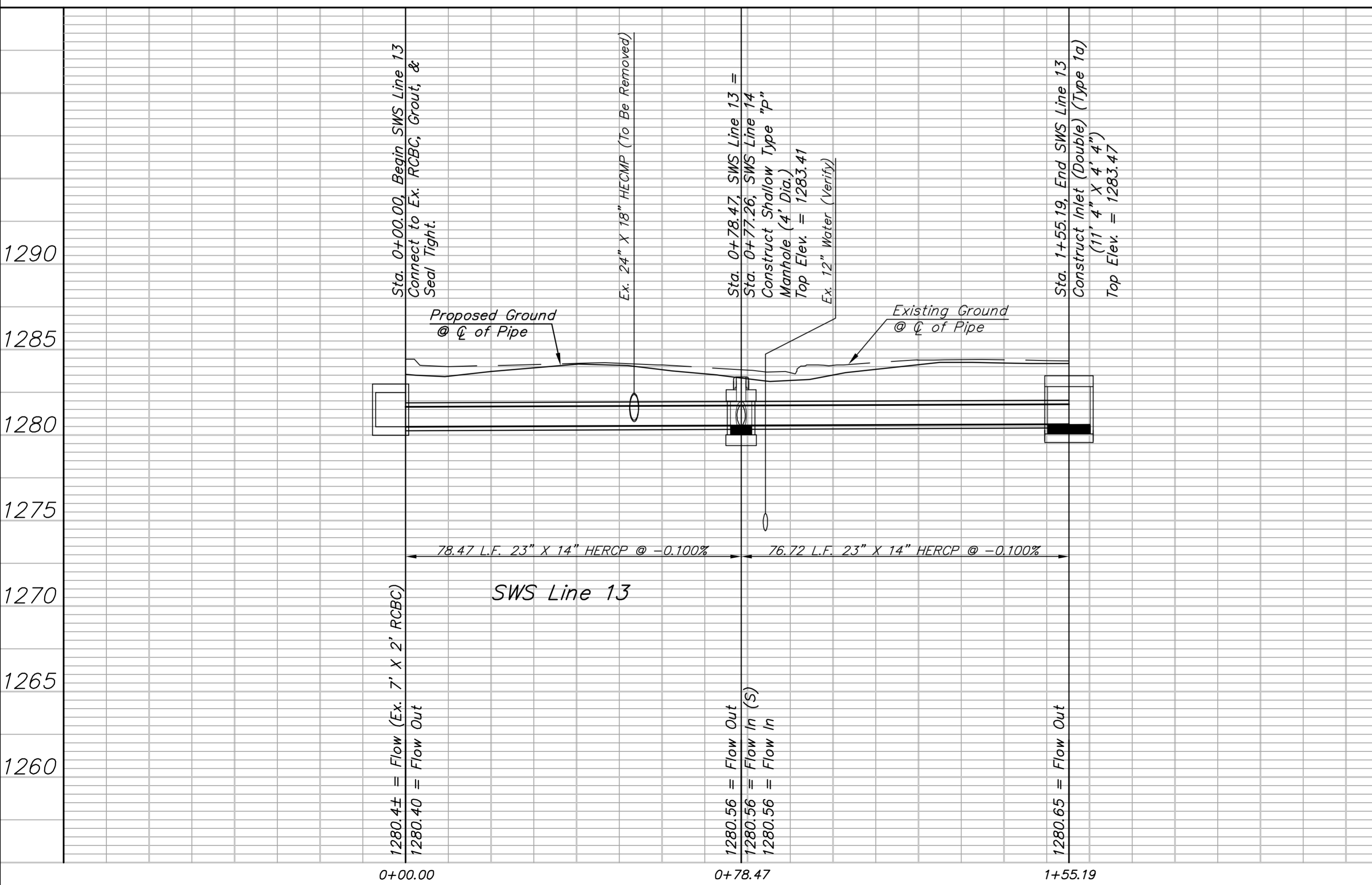
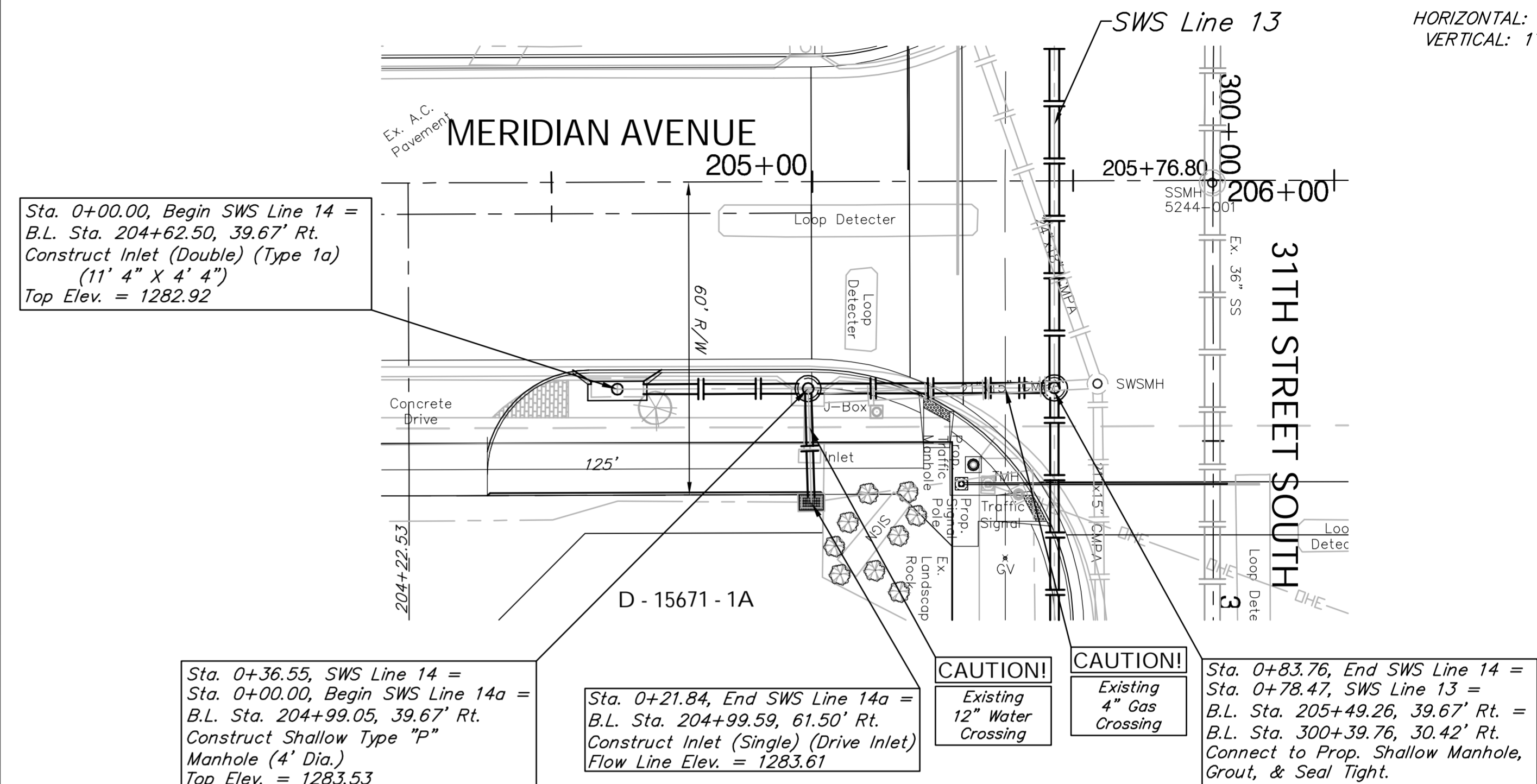
BENCHMARK:  
 BM #17 - City of Wichita Disc on the North Hubguard of the  
 RCBC in the Northwest Corner of the Intersection of  
 Meridian and 31st Street North  
 Sta. 206+50, 40' Lt.  
 Elev. = 1284.28 MSL

SCALE:  
 HORIZONTAL: 1" = 20'  
 VERTICAL: 1" = 5'



BENCHMARK:  
 BM #17 - City of Wichita Disc on the North Hubguard of the  
 RCBC in the Northwest Corner of the Intersection of  
 Meridian and 31st Street North  
 Sta. 206+50, 40' Lt.  
 Elev. = 1284.28 MSL

SCALE:  
 HORIZONTAL: 1" = 20'  
 VERTICAL: 1" = 5'



Drawing File: E:\eng\Meridian\47th to 31st\Land\dwg\Base.dwg (SWS27)  
 Project No. 0510E396 CAPITAL IMPROVEMENT PROJECT  
 STORM WATER SEWER PLAN & PROFILE  
 SWS Line 13, SWS Line 14, & SWS Line 14a  
 MERIDIAN AVENUE - 47TH STREET SOUTH TO 31ST STREET SOUTH

**Baughman Company, P.A.**  
 315 Ellis St. Wichita, KS 67211 P 316-262-0149 F 316-262-0149  
 ENGINEERING | SURVEYING | PLANNING | LANDSCAPE ARCHITECTURE

September 2009  
 SHEET  
 77  
 OF  
 187