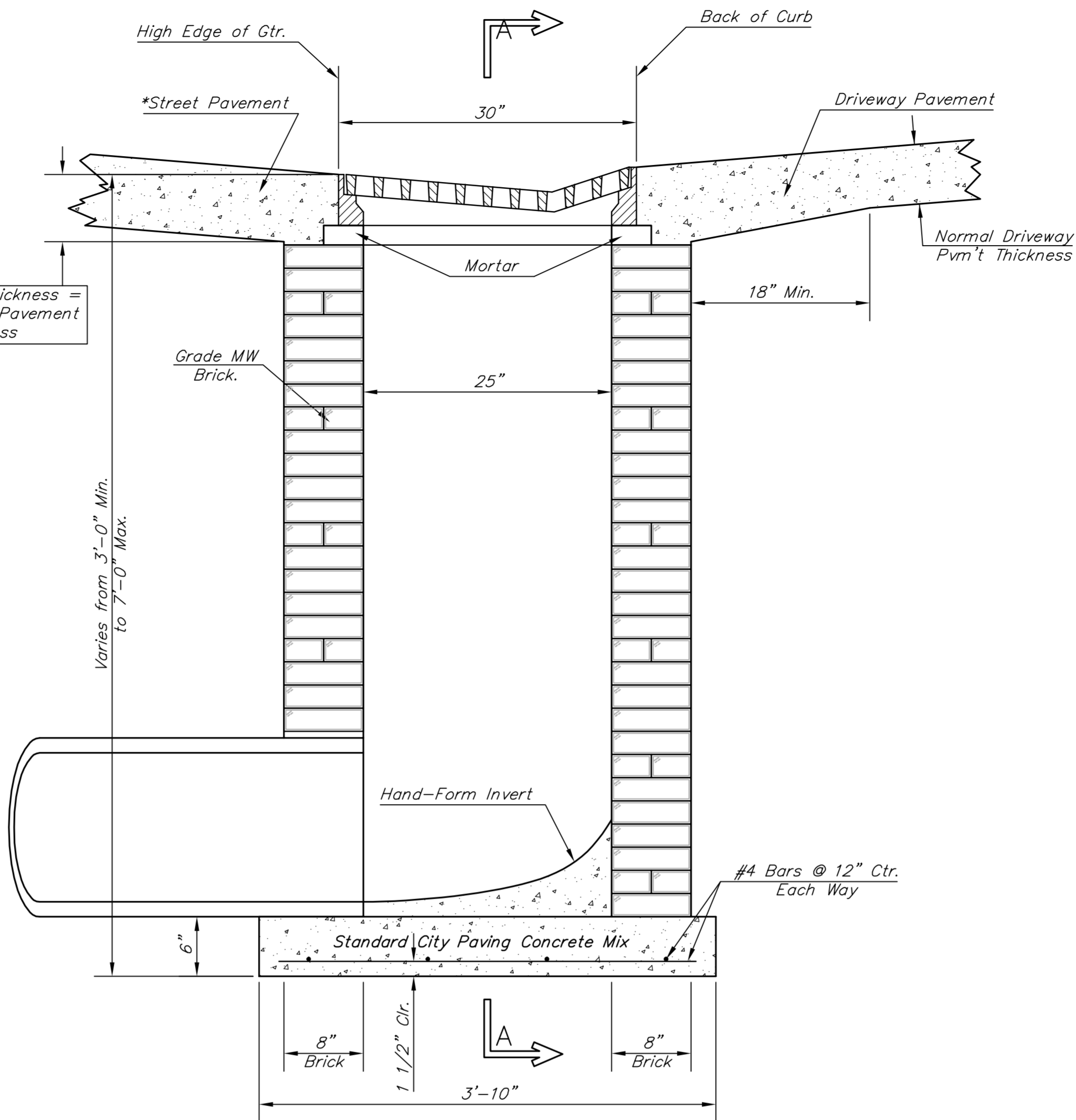
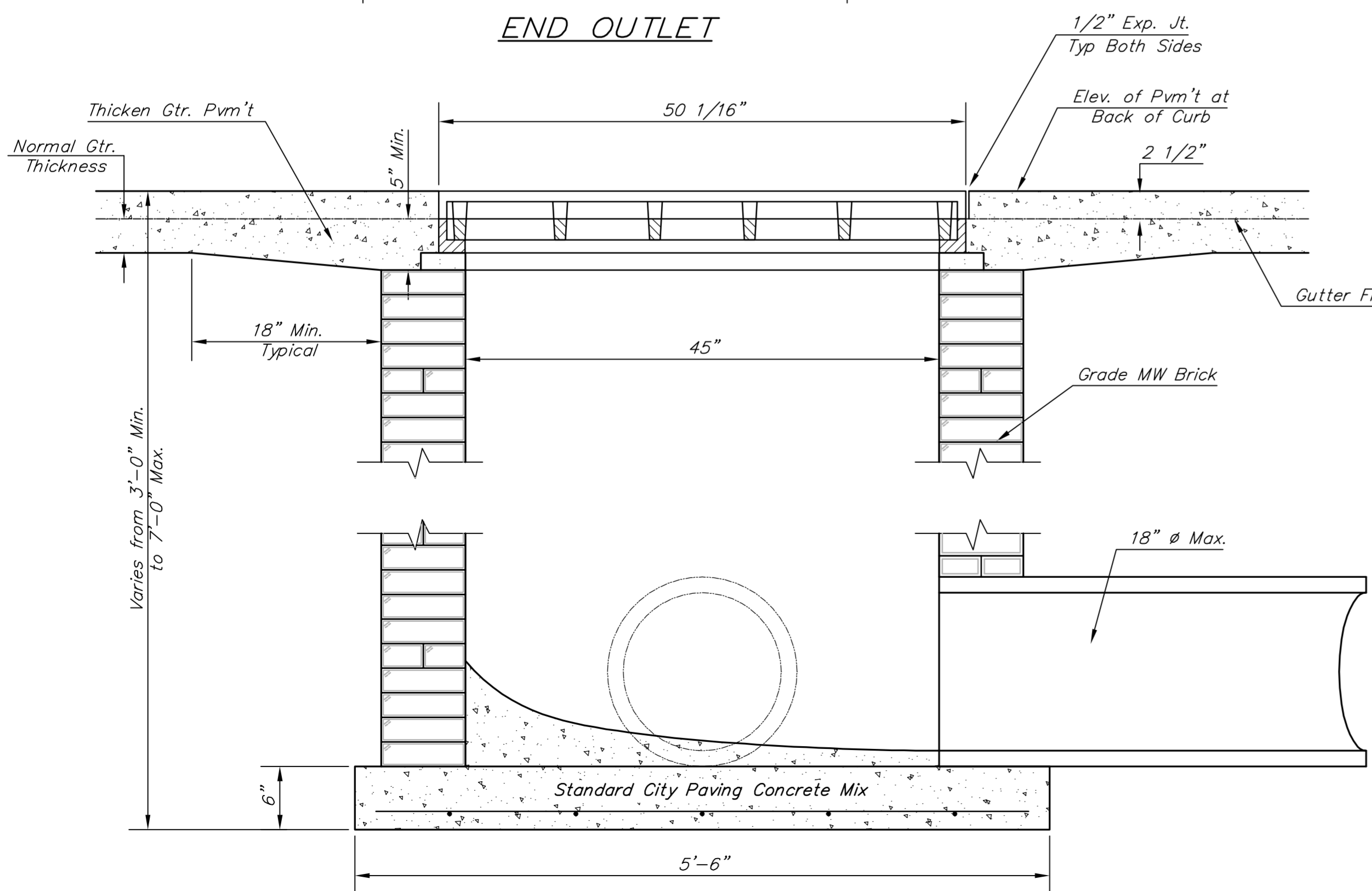


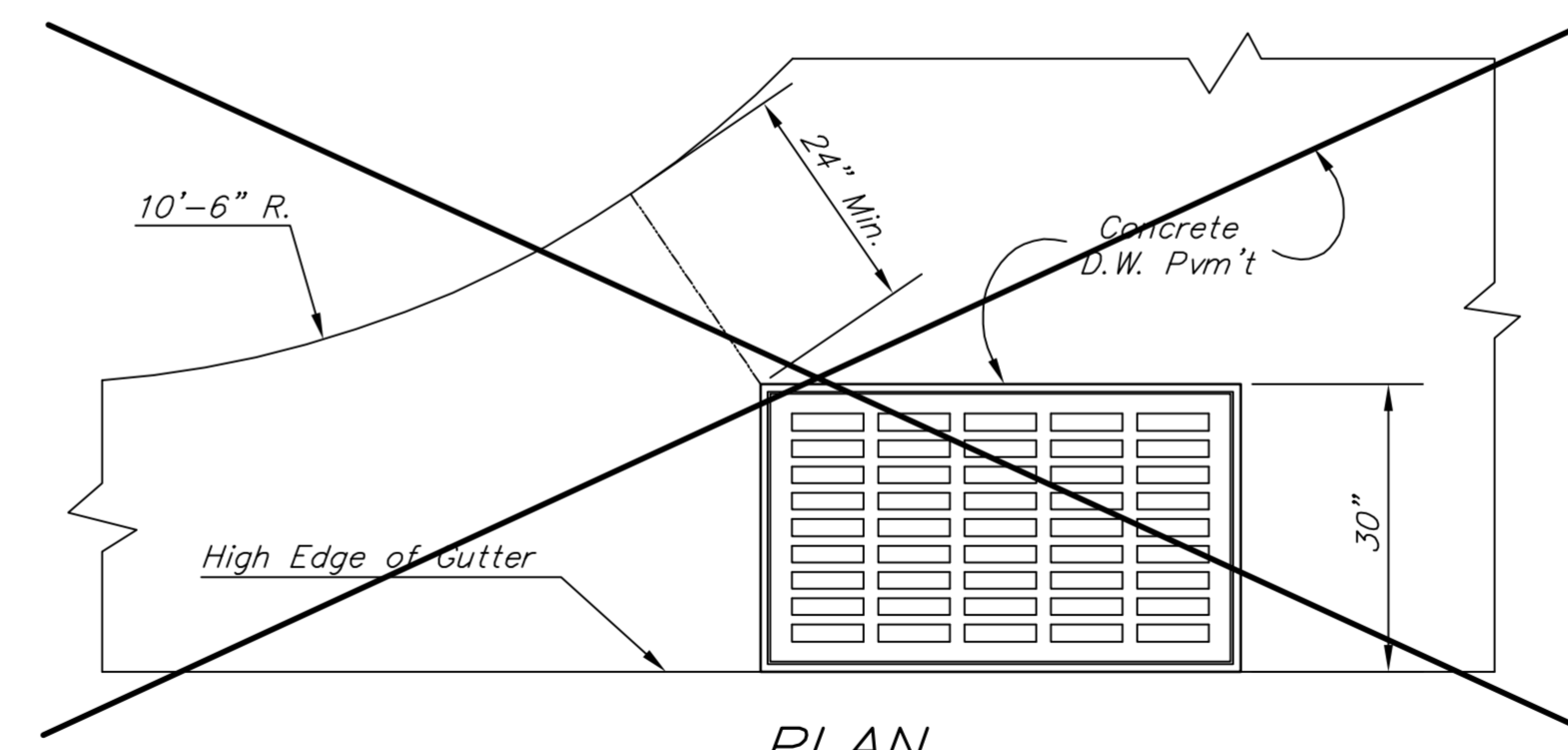
END OUTLET



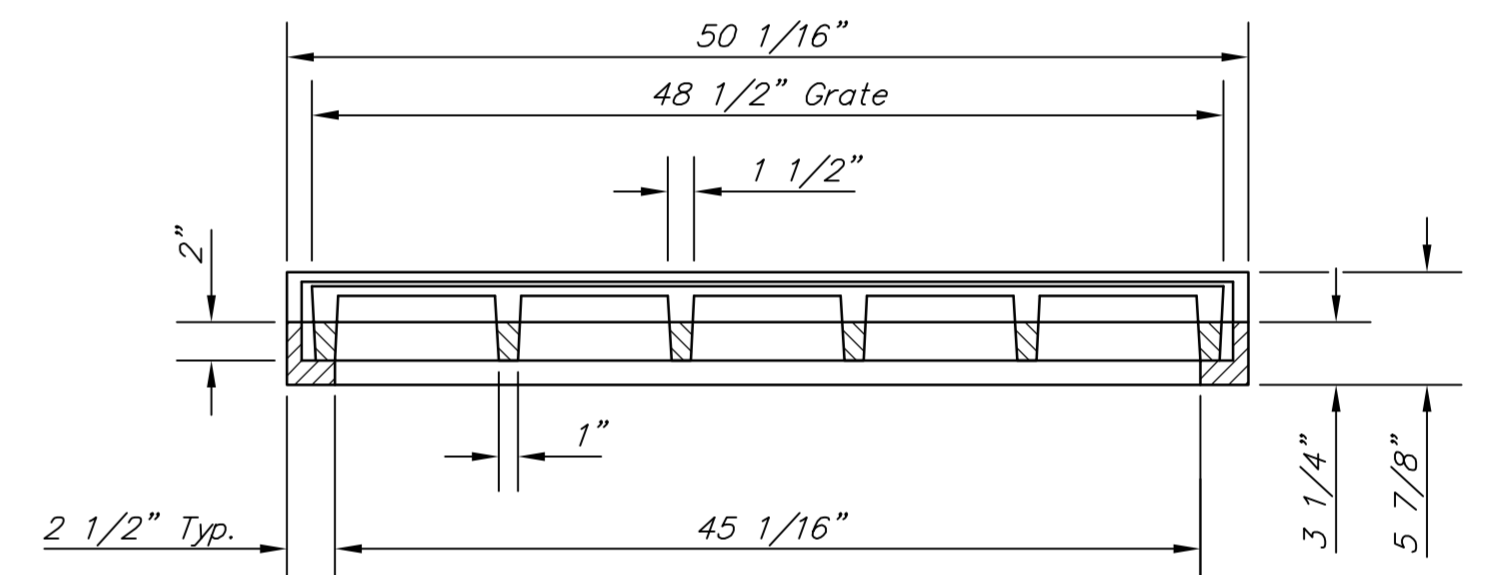
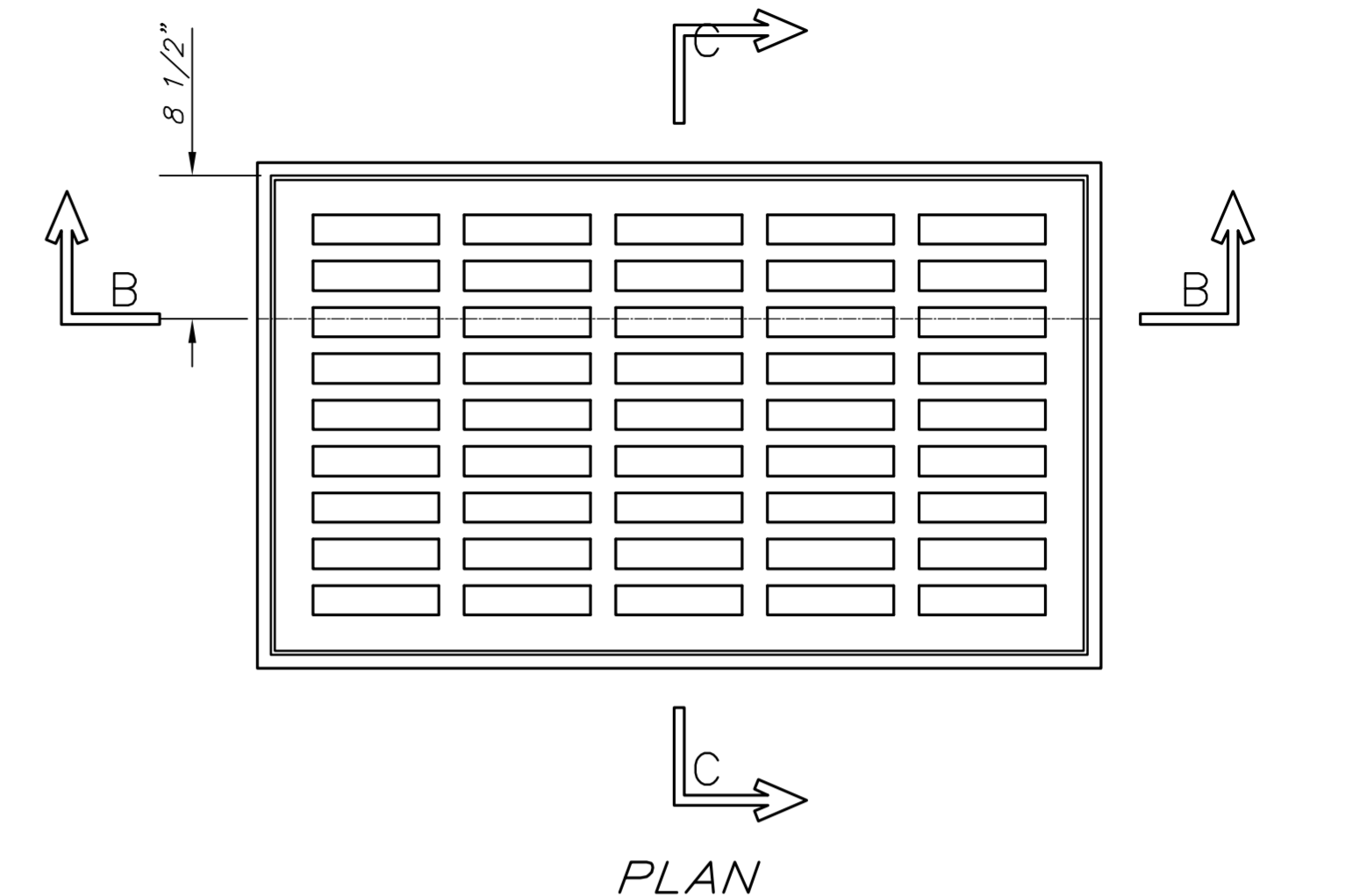
SIDE OUTLET



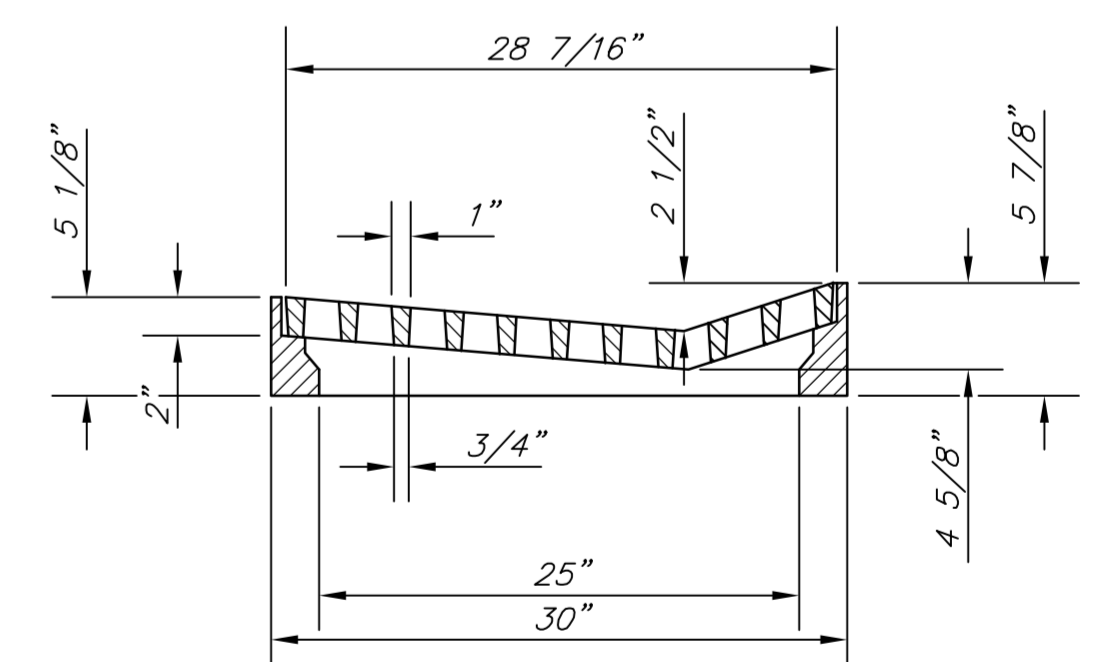
SECTION A-A



PLAN



SECTION B-B



SECTION C-C

DEETER #2095 FRAME & GRATE
TOTAL WEIGHT: 705 lbs.

GENERAL NOTES

1. Grate frame to be installed on thin mortar cushion to insure full support along brick walls. Concrete used for inlet construction shall be concrete pavement mix.
2. Inlet invert shall be shaped with 8 sack sand mix concrete to create flow channels and to increase hydraulic efficiency such that the inlet will be self cleaning between all inlet and/or outlet pipes.
3. The ends of all pipes installed in inlets shall be cut off flush with the inside face of the inlet wall.
4. Inlet Frame and Grate to be Deeter #2095 or approved equal.

Drawing File: E:\eng\Meridian\47th to 31st\Details\Driv Inlet Single.dwg
 Design: C.O.W.
 Drawn: C.O.W.
 Approved: TPV
 Scale: None

Project No. 0510E396 CAPITAL IMPROVEMENT PROJECT
 STANDARD SINGLE DRIVE
 INLET DETAILS
 MERIDIAN AVENUE - 47TH STREET SOUTH to 31ST STREET SOUTH

Baughman Company, P.A.
 315 Ellis St., Wichita, KS 67211 P 316-262-7171 F 316-262-0149
 Baughman ENGINEERING | SURVEYING | PLANNING | LANDSCAPE ARCHITECTURE

September 2009
 SHEET 82 OF 187