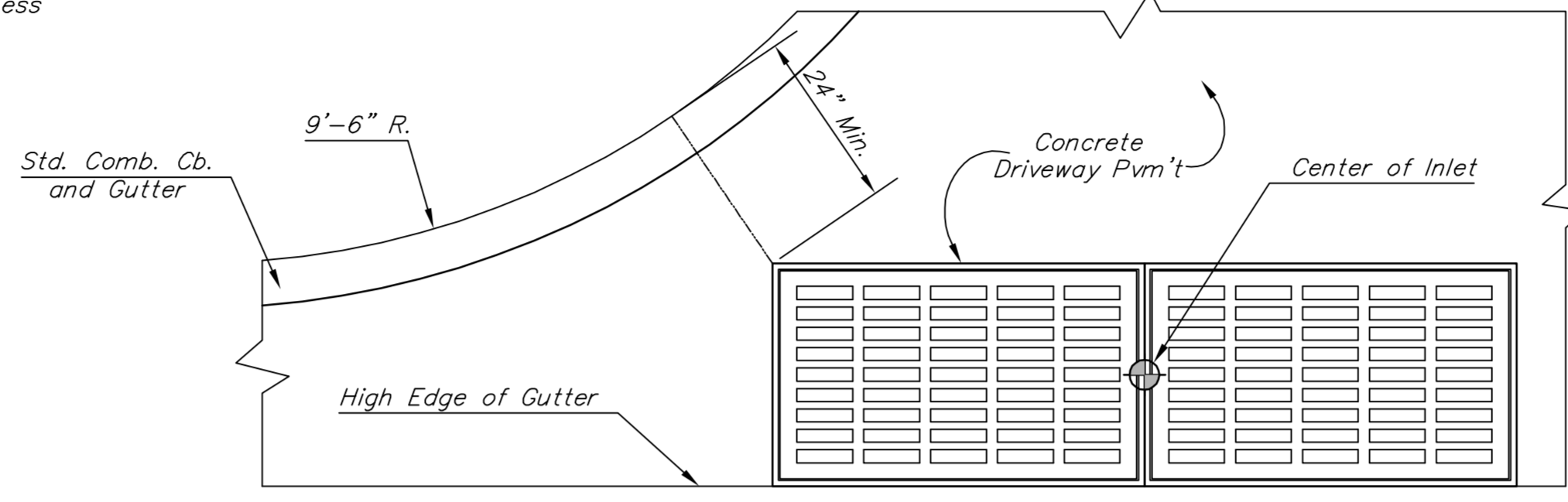


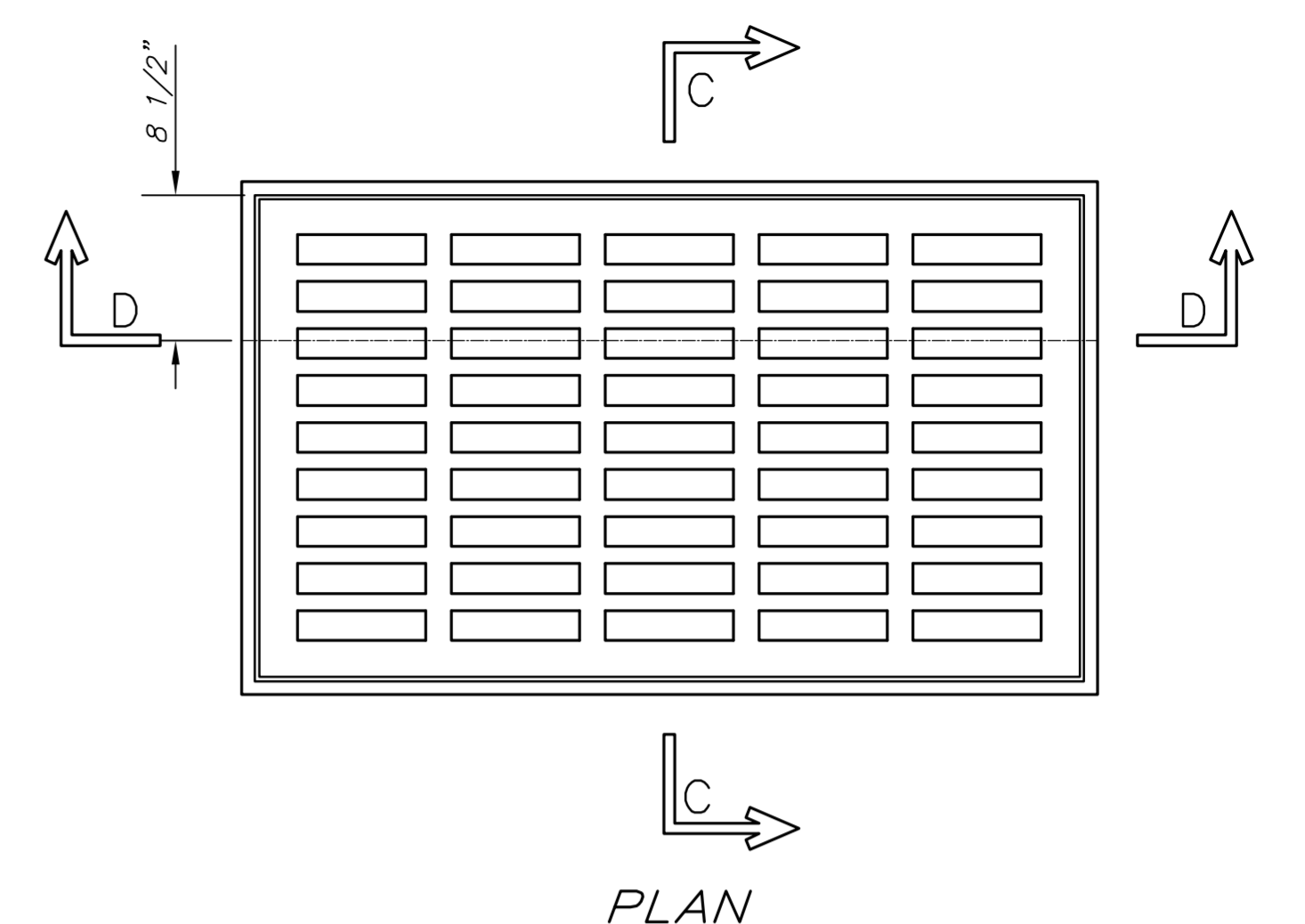
SECTION B-B



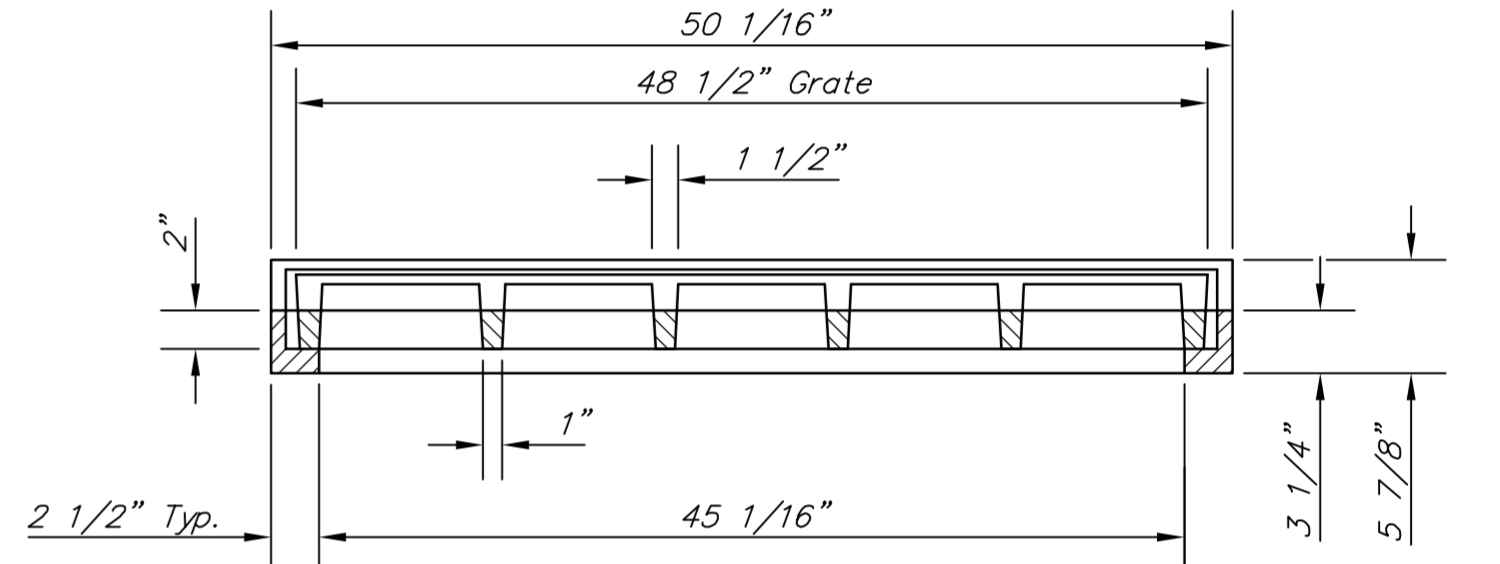
PLAN

GENERAL NOTES

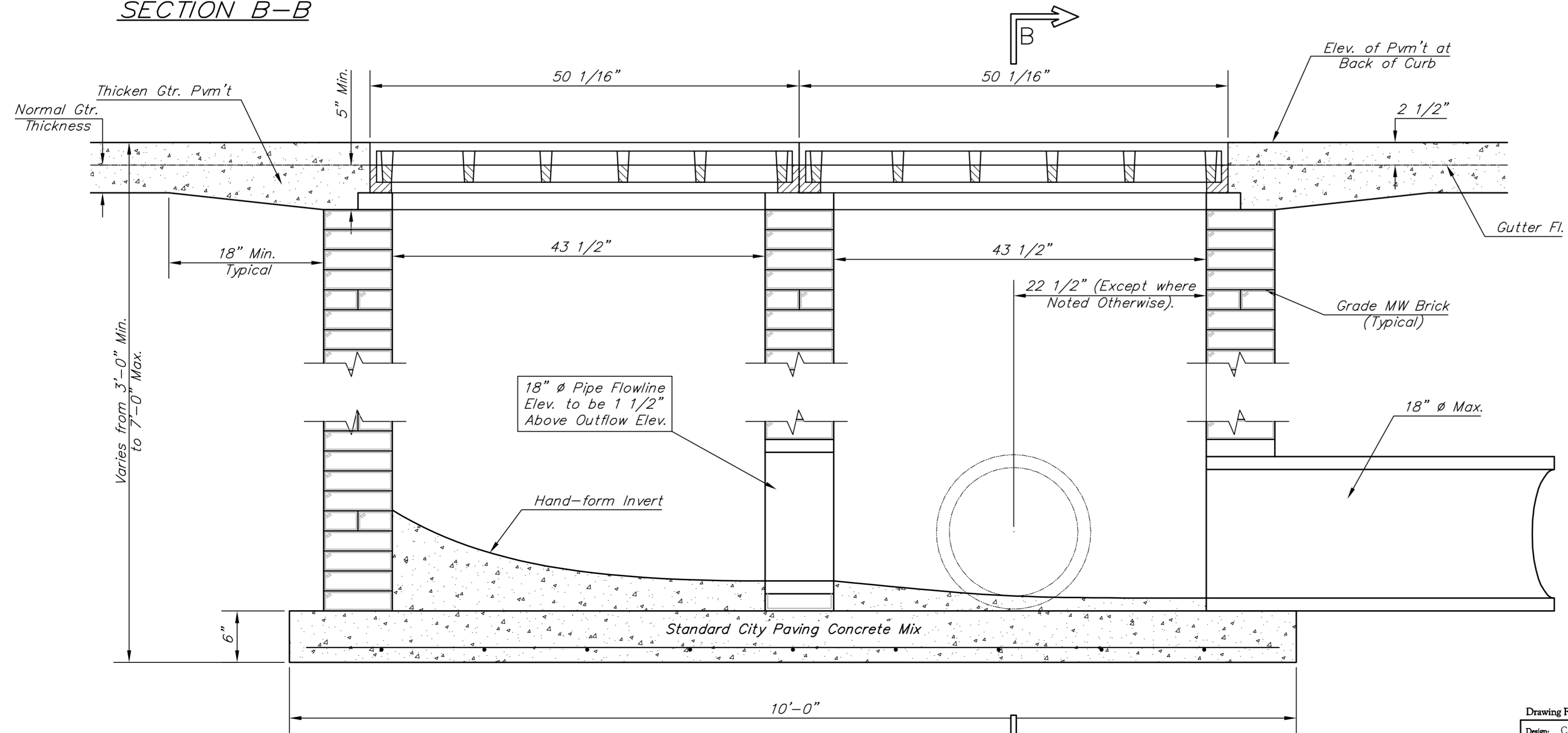
1. Grate frames to be installed on thin mortar cushion to insure full support along brick walls. Concrete used for inlet construction shall be concrete pavement mix.
2. Inlet invert shall be shaped with 8 sack sand mix concrete to create flow channels and to increase hydraulic efficiency such that the inlet will be self cleaning between all inlet and/or outlet pipes.
3. The ends of all pipes installed in inlets shall be cut off flush with the inside face of the inlet wall.
4. Inlet Frames and Grates to be two (2) Deeter #2095 or approved equal.



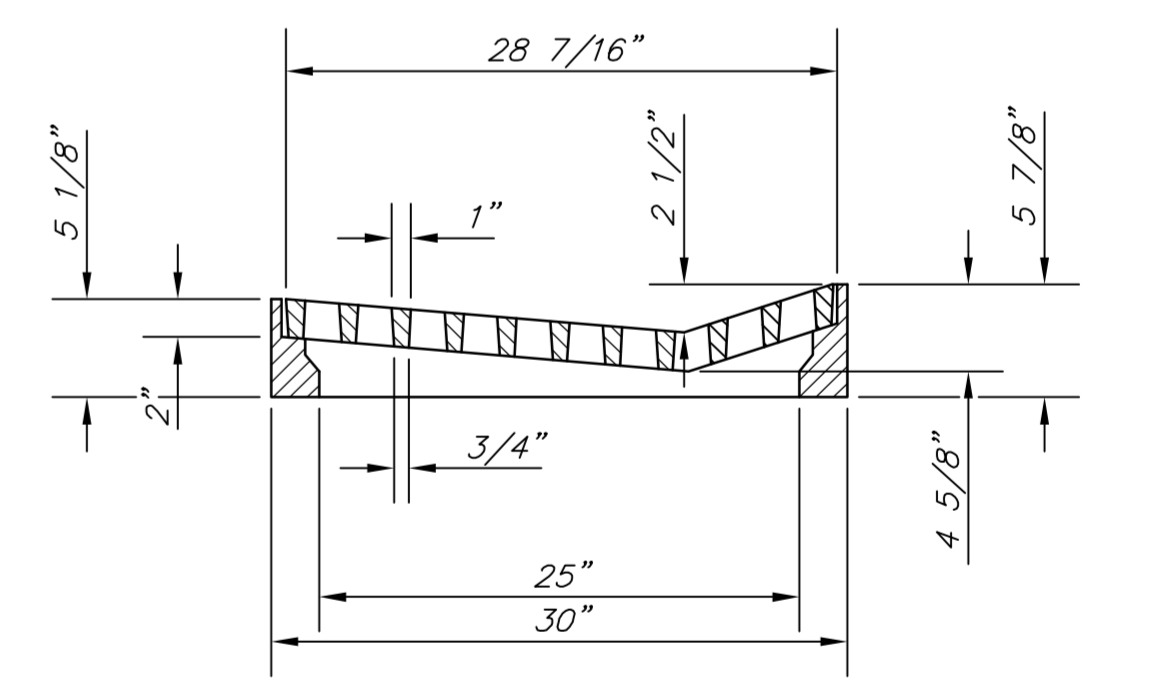
PLAN



SECTION D-D



SECTION A-A



SECTION C-C

DEETER #2095 FRAME & GRATE
TOTAL WEIGHT: 705 lbs.
(2 Each Required)

Drawing File: E:\eng\Meridian\47th to 31st\Details\Driv Inlet.dwg
Design: C.O.W.
Drawn: C.O.W.
Approved: TPV
Scale: None

Project No. 051DE396 CAPITAL IMPROVEMENT PROJECT
STANDARD DOUBLE DRIVE
INLET DETAILS
MERIDIAN AVENUE - 47TH STREET SOUTH to 31ST STREET SOUTH

Baughman Company, P.A.
315 Ellis St., Wichita, KS 67211 P 316-262-7171 F 316-262-0149
Baughman ENGINEERING | SURVEYING | PLANNING | LANDSCAPE ARCHITECTURE

September 2009
SHEET 83 OF 187