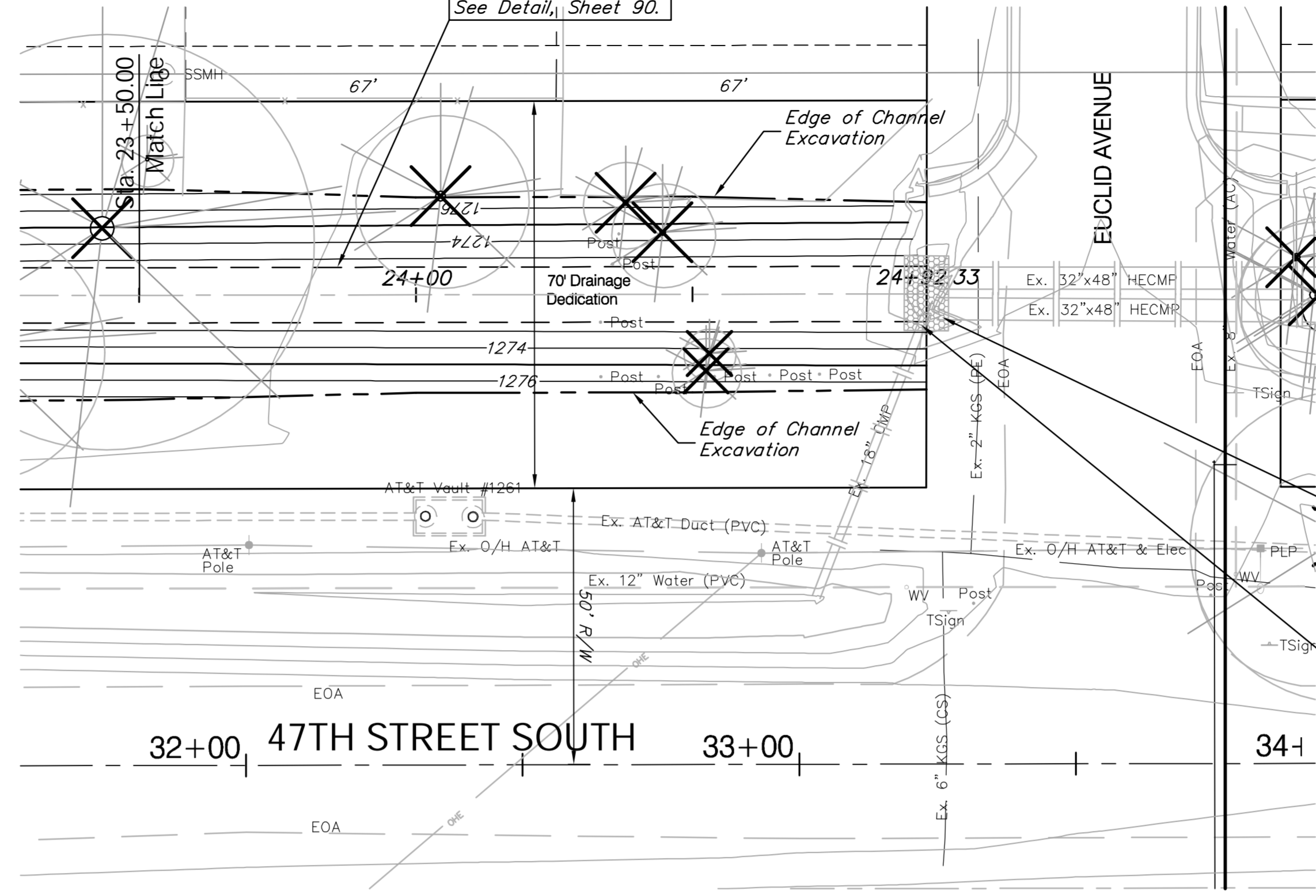


**BENCHMARK:**  
 BM #3 - "Cut in the Concrete Base of Metal Fence Post  
 28' West of the Fourth Concrete Pillar West of the  
 South Lakes Park Entrance  
 Sta. 25+86, 54' Rt.  
 Elev. = 1277.92 (MSL)

CALDWELL'S THIRD ADDITION  
 BLOCK 1

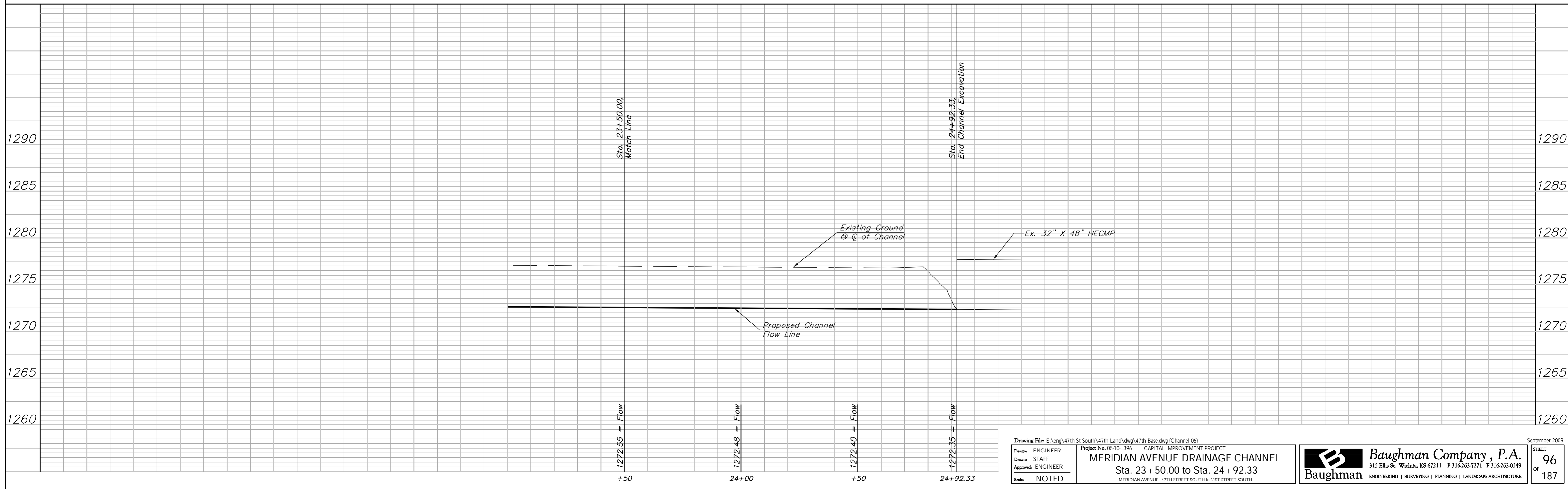
Excavate 10' Wide  
 Flat Bottom Channel  
 with 3:1 Side Slope.  
 See Detail, Sheet 90.



Sta. 24+92.33,  
 End Excavation of 10' Wide Flat  
 Bottom Channel with 3:1 Install 12.1  
 Sq. Yd. Light Stone Rip Around End  
 of Ex. 32" X 48" HECMP's.

Saw & Remove Approx. 5 L.F.  
 18" CMP as Necessary.

SCALE:  
 HORIZONTAL: 1" = 20'  
 VERTICAL: 1" = 5'



Drawing File: E:\eng\47th St South\47th Land\dwg\47th Base.dwg (Channel 06)  
 Design: ENGINEER  
 Drawn: STAFF  
 Approved: ENGINEER  
 Scale: NOTED  
 Project No. 0510E396 CAPITAL IMPROVEMENT PROJECT  
**MERIDIAN AVENUE DRAINAGE CHANNEL**  
 Sta. 23+50.00 to Sta. 24+92.33  
 MERIDIAN AVENUE - 47TH STREET SOUTH to 31ST STREET SOUTH

**Baughman Company, P.A.**  
 315 Ellis St., Wichita, KS 67211 P 316-262-7171 F 316-262-0149  
 Baughman ENGINEERING | SURVEYING | PLANNING | LANDSCAPE ARCHITECTURE

September 2009  
 SHEET  
 OF 187  
 96