

BENCHMARK:
 BM #5 - "I" Chiseled in the Back of Curb in the North
 Curb Line of 43rd Street South
 Sta. 124+50, 98' Lt.
 Elev. = 1281.40 MSL

Sta. 0+00.00, Begin Water Line 1 =
 B.L. Sta. 123+55.19, 41.41' Lt.
 Saw & Remove Ex. 12" Water Line as
 Necessary to Install 1-45" CIMJ Bend (Rt.)
 and Connect to Ex. 12" Water Line.*

CAUTION!
 Existing
 4" Gas
 Crossing

CAUTION!
 Existing
 O/H Elec
 O/H CATV
 Crossings

* Prior to Beginning Construction on the Water Line, the
 Contractor Shall Excavate the Ex. 12" Water to Verify Size
 and Location. All Necessary Adjustments to the Proposed
 and Existing Water Lines to Make the Connections, Including
 Additional Water Line and Fittings, Shall be Considered
 SUBSIDIARY to the Water Line Installation.

DANGER!
 2-Existing
 High
 Pressure
 Pipeline
 Crossings

Sta. 3+36.96, Water Line 1 =
 B.L. Sta. 126+85.02, 24.06' Lt.
 Install 1-12" 22.5" CIMJ Bend (Rt.)

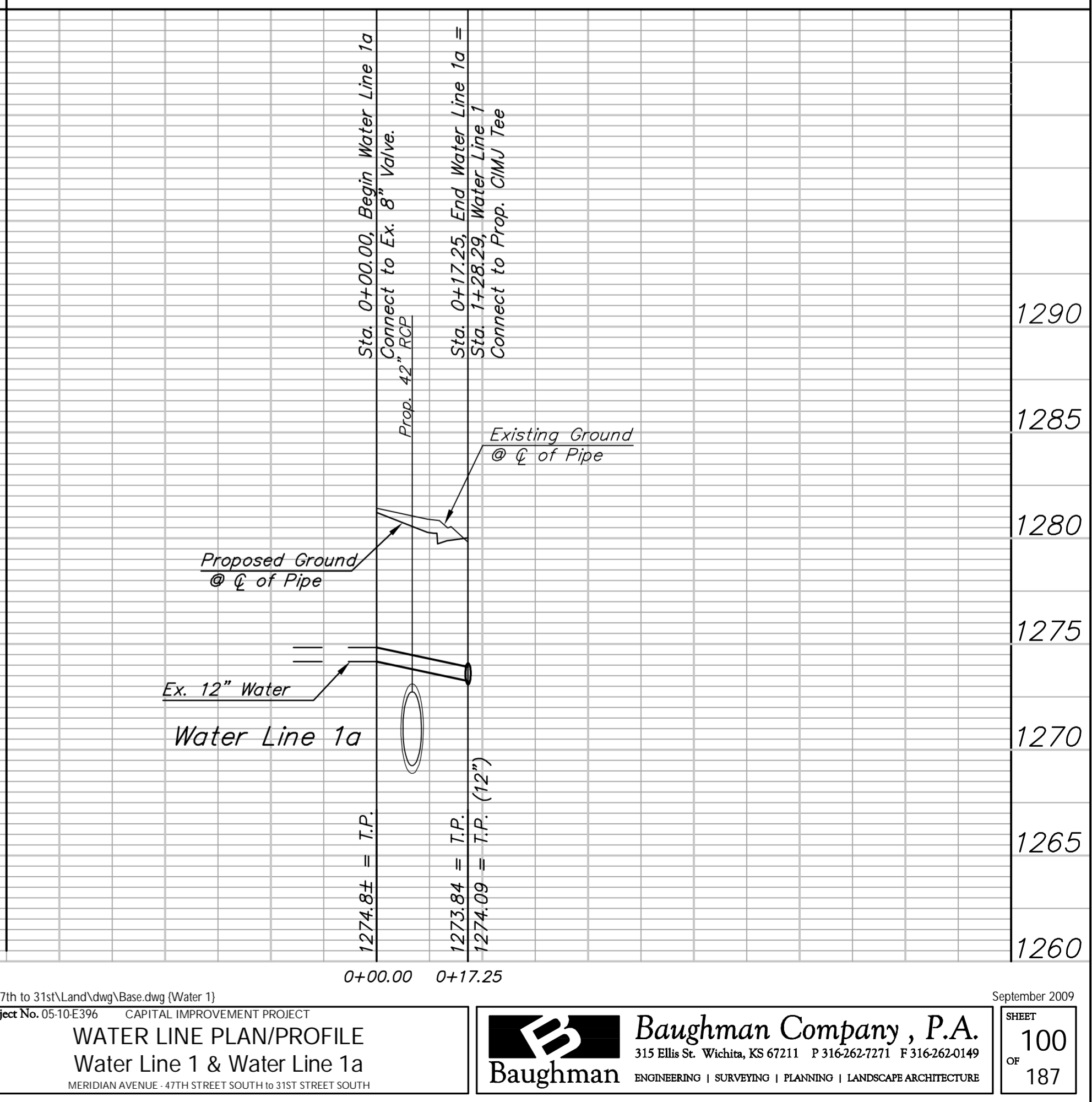
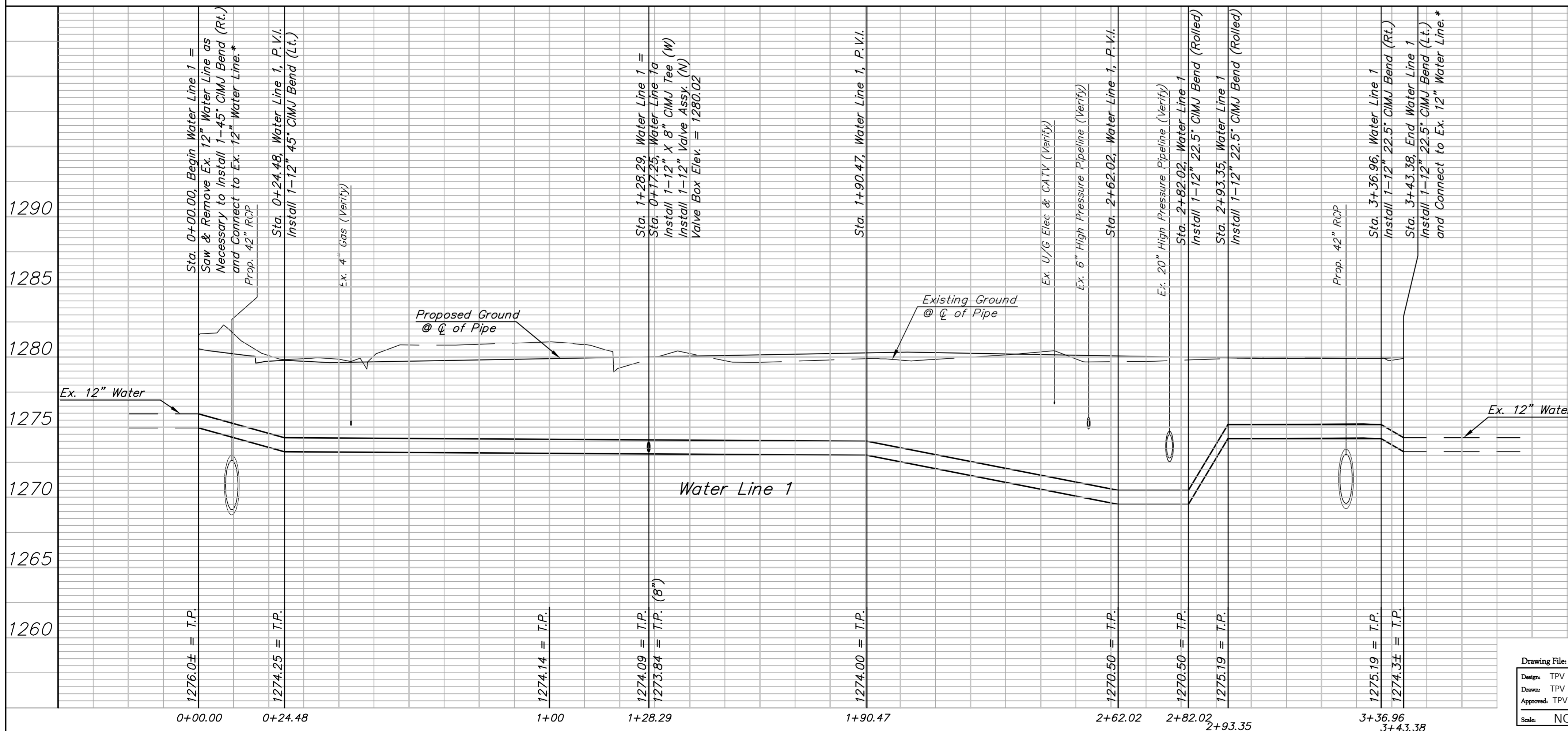
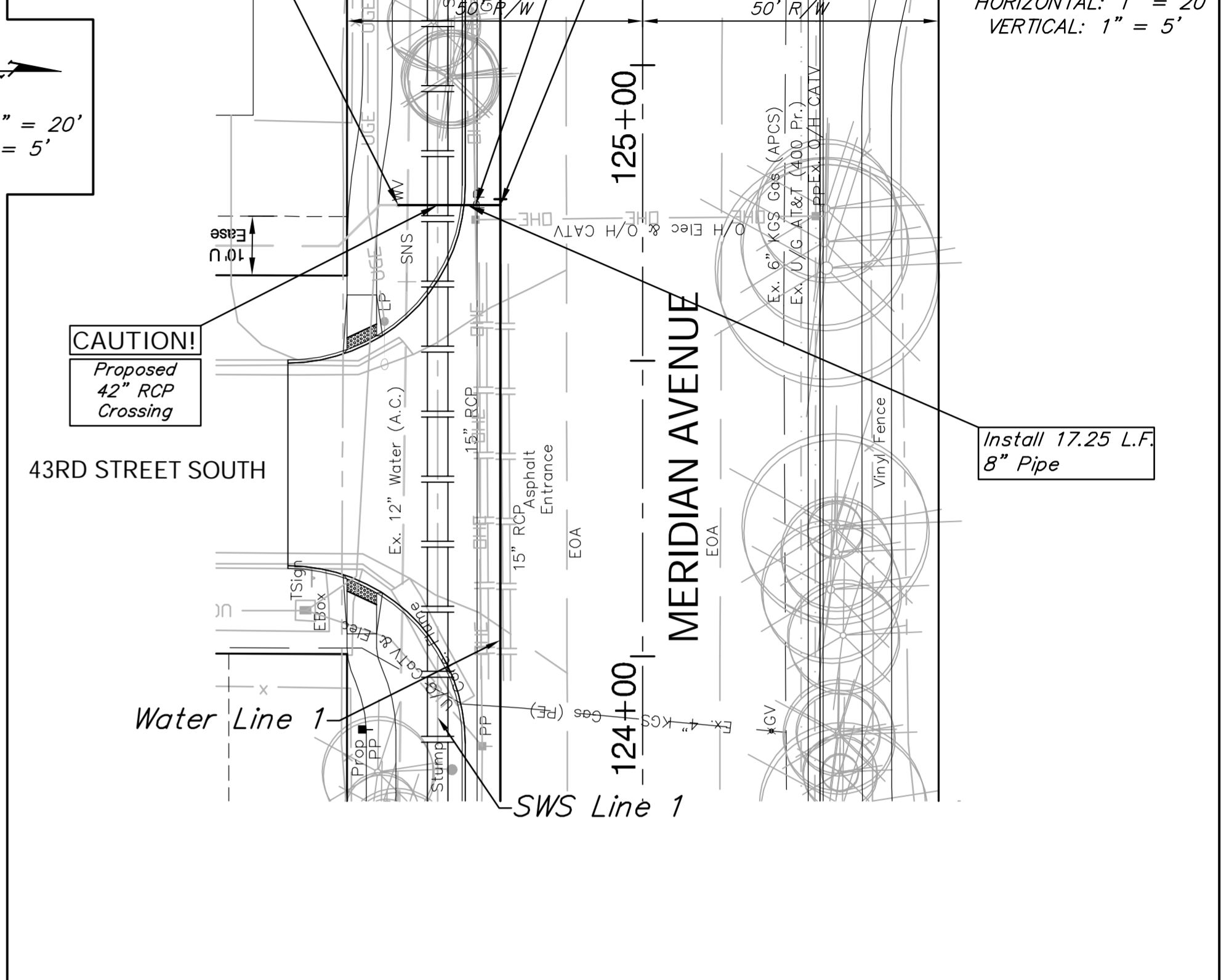
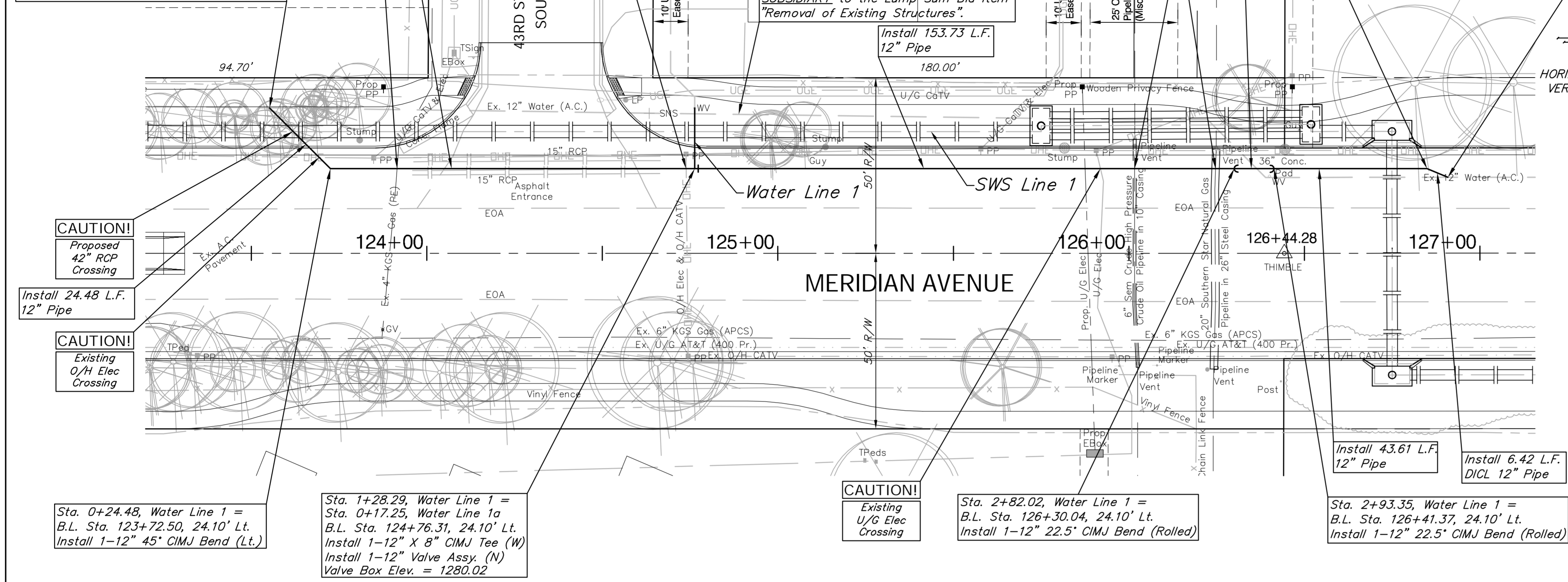
Sta. 3+43.38, End Water Line 1 =
 B.L. Sta. 126+90.95, 21.61' Lt.
 Install 1-12" 22.5" CIMJ Bend (Lt.)
 and Connect to Ex. 12" Water Line.*

Sta. 0+00.00, Begin Water Line 1a
 B.L. Sta. 124+76.33, 41.36' Lt.
 Connect to Ex. 8" Valve.

CAUTION!
 Existing
 O/H Elec
 Crossing

Sta. 0+17.25, End Water Line 1a =
 Sta. 1+28.29, Water Line 1
 B.L. Sta. 124+76.31, 24.10' Lt.
 Connect to Prop. CIMJ Tee

SCALE:
 HORIZONTAL: 1" = 20'
 VERTICAL: 1" = 5'



Drawing File: E:\eng\Meridian-47th to 31st\Land\dwg\Bases.dwg (Water 1)
 Project No. 0510E396 CAPITAL IMPROVEMENT PROJECT
WATER LINE PLAN/PROFILE
Water Line 1 & Water Line 1a
 MERIDIAN AVENUE - 47TH STREET SOUTH TO 31ST STREET SOUTH

Baughman Company, P.A.
 315 Ellis St., Wichita, KS 67211 P 316-262-7171 F 316-262-0149
 ENGINEERING | SURVEYING | PLANNING | LANDSCAPE ARCHITECTURE

September 2009
 SHEET
100
 OF
187