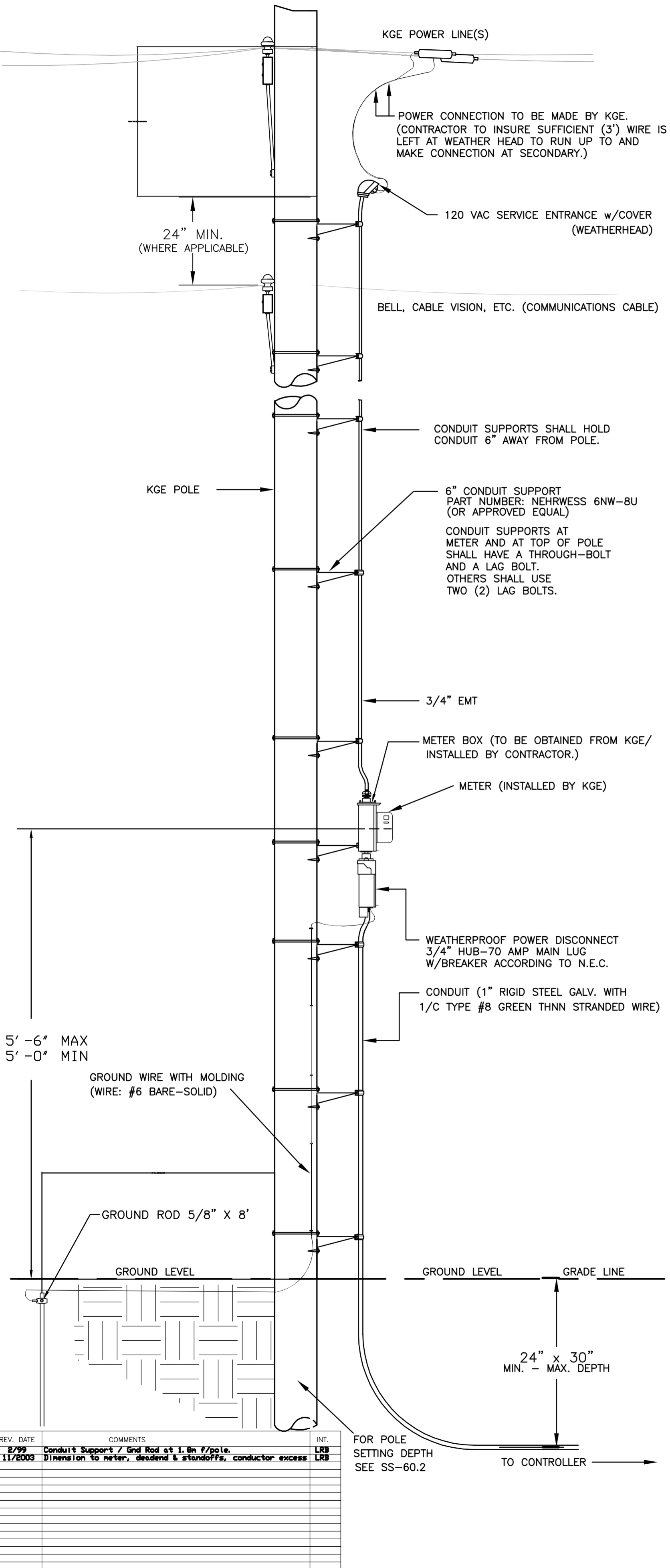
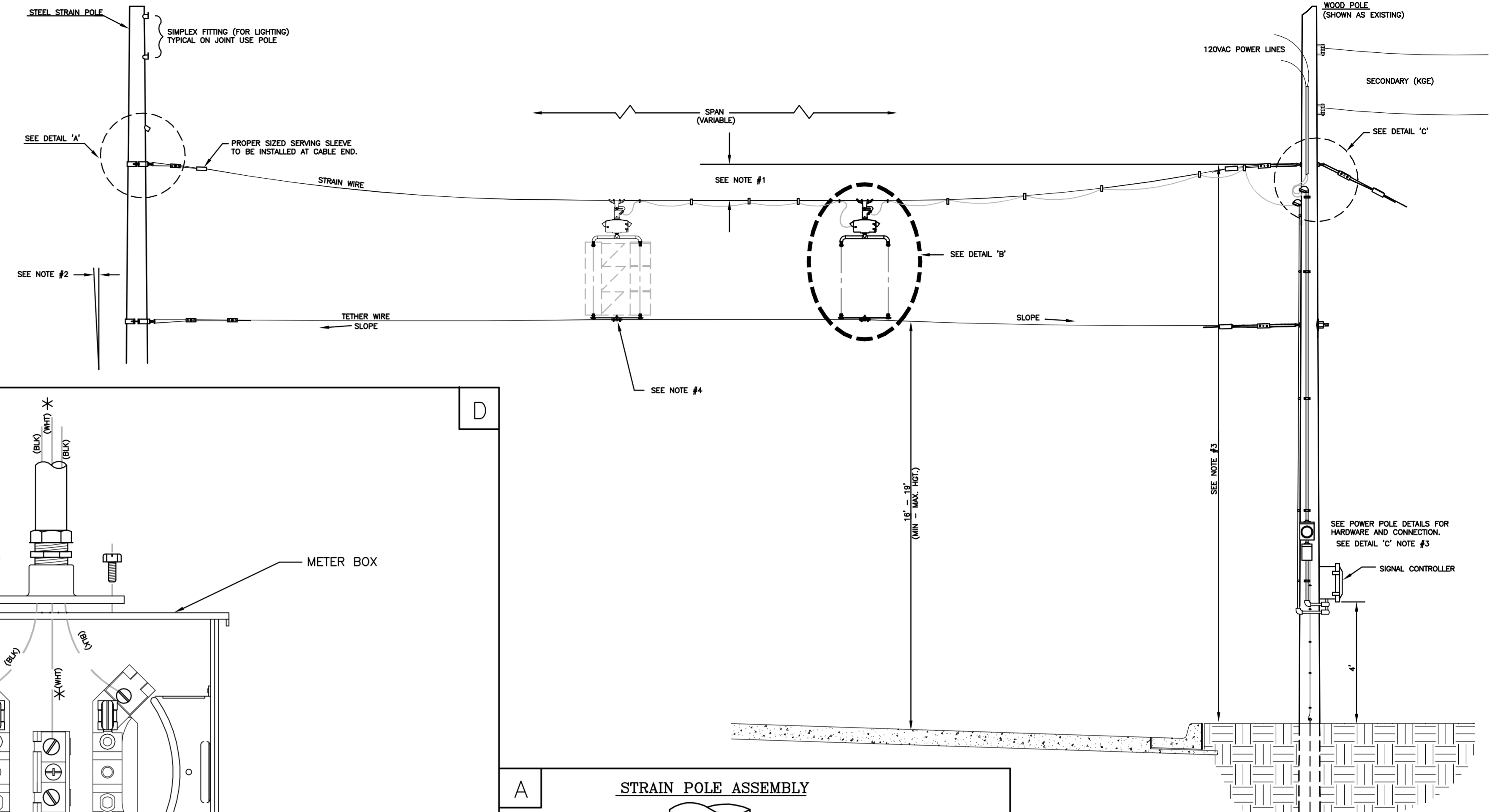


**POWER POLE DETAILS**



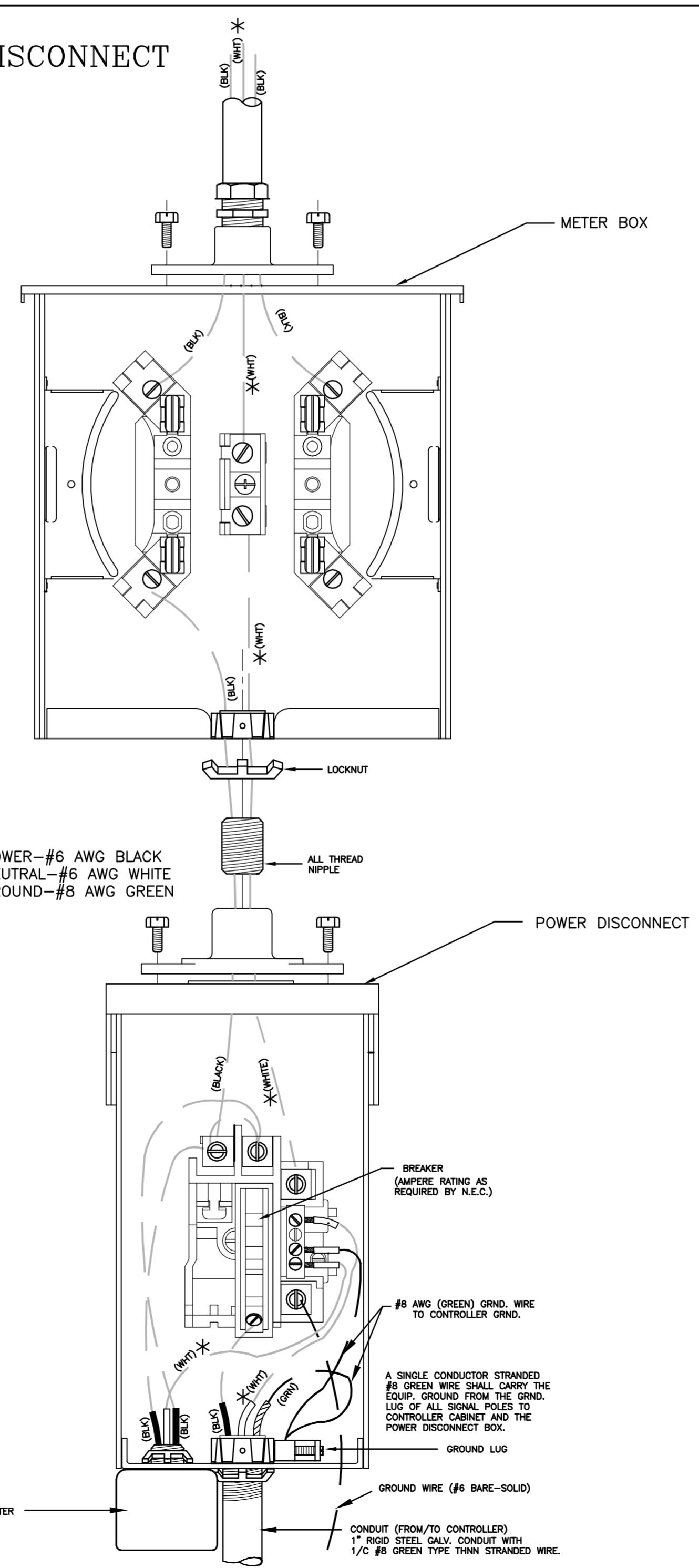
**SPANWIRE ASSEMBLY DETAILS**

1. MAX. SAG = 5% OF SPAN.
2. STANDARD BACKRAKE = 1.5'
3. HEIGHT OF STRAIN WIRE HOOK-UP TO BE DETERMINED BY FIELD ENGINEER. TRAFFIC SIGNAL CABLE TO BE SECURED TO STRAIN (SPAN) WIRE WEATHERABLE NYLON CABLE HANGERS (12" CTR.) DETAIL 'B'
4. TETHER CLAMP TO BE DESIGNED TO RELEASE UNDER 'HIGH WIND LOAD' TO PERMIT SIGNAL 'FREE SWING'.

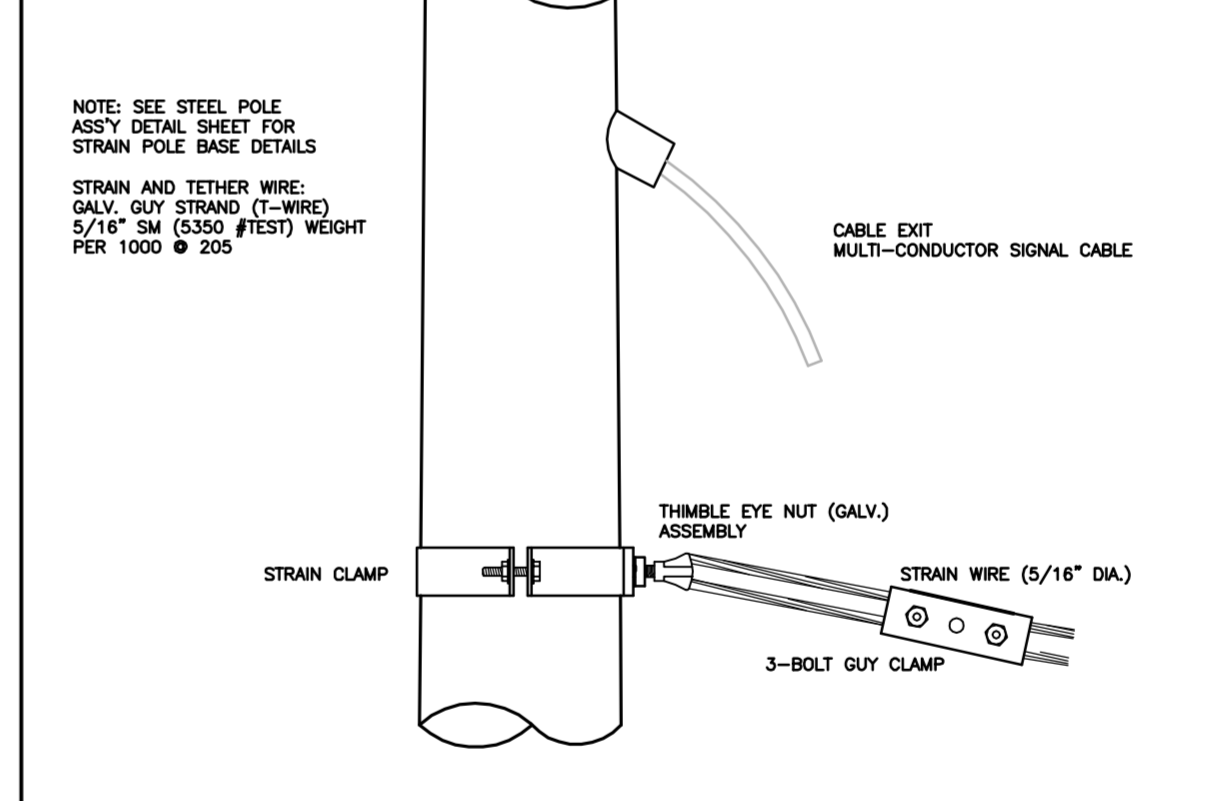


**METER BOX & POWER DISCONNECT DETAILS**

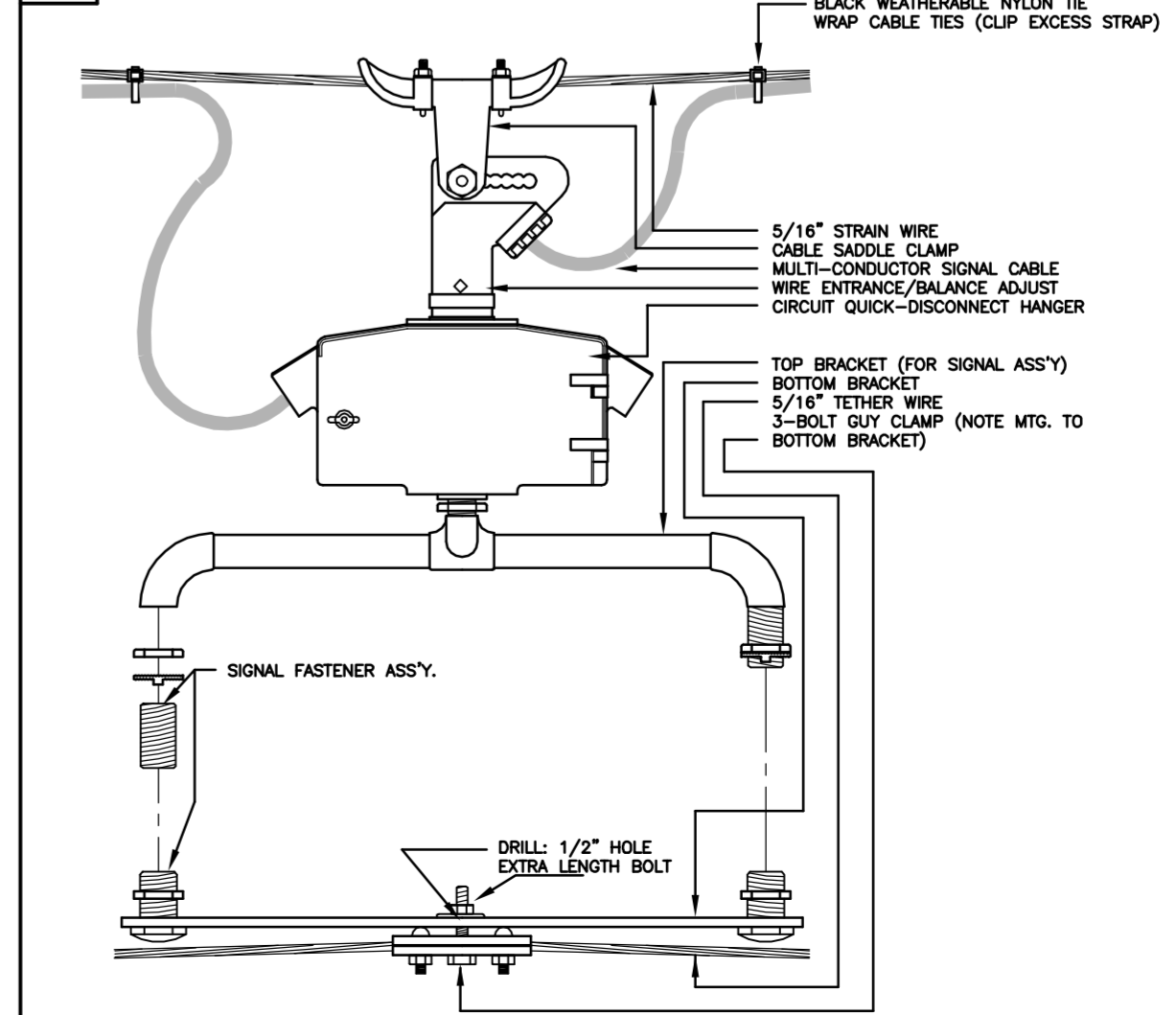
NOTE:  
\* TO BE MARKED WITH WHITE TAPE



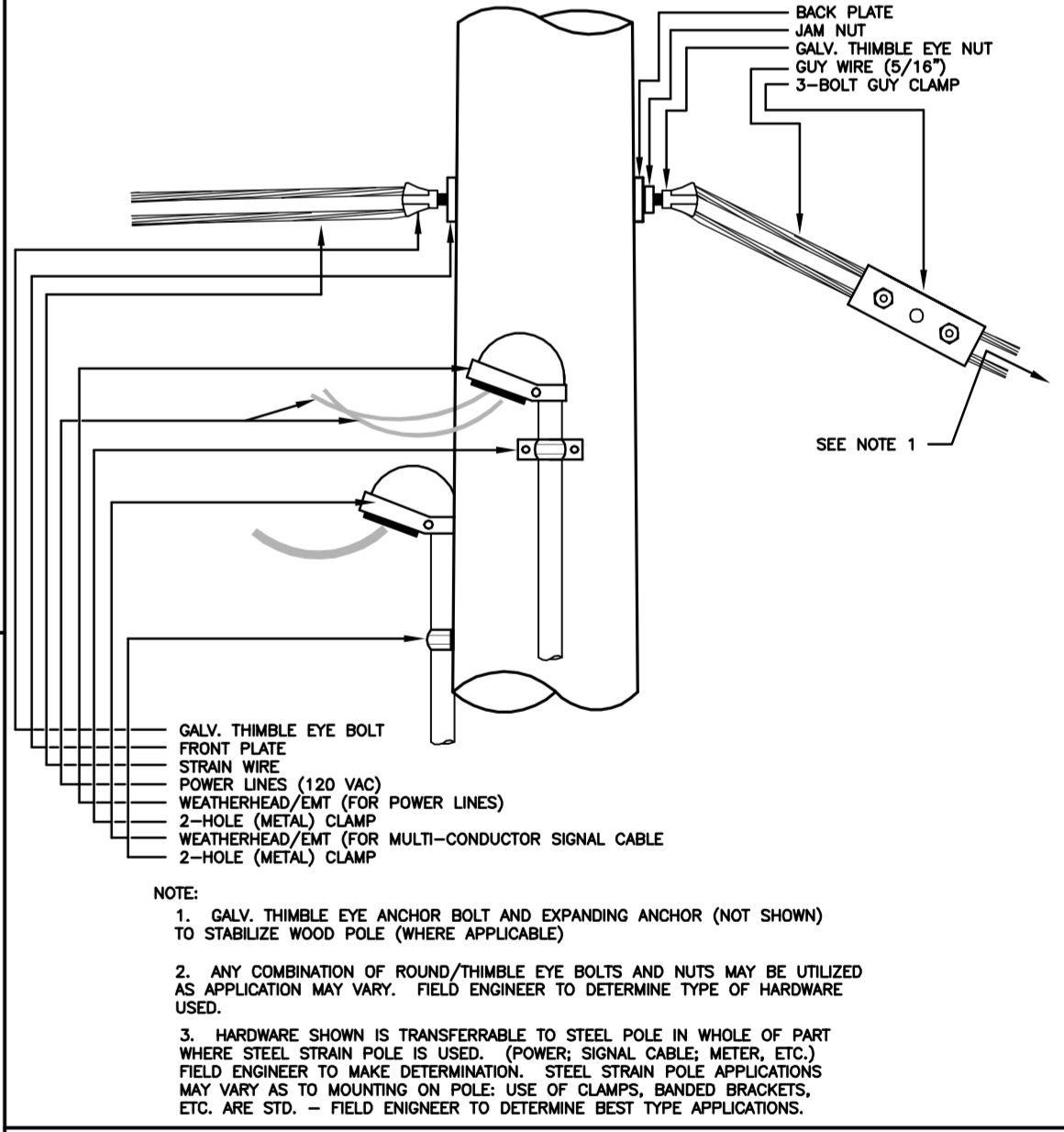
**A STRAIN POLE ASSEMBLY**



**B SIGNAL BRACKET ASSEMBLY DETAILS**



**C WOOD POLE ASSEMBLY DETAILS KGE POLE EXCLUDED**



MERIDIAN AVENUE - 47TH TO 31ST		
<b>POWER POLE AND SPAN POLE ASSEMBLY DETAILS</b>		
PROJECT NUMBER 472-84302		
DRAWN BY: T.M.	APPROVED BY:	REVISED BY: L. B.
DATE: FEB. 96		DATE: X/XX/XX
CITY OF WICHITA DEPARTMENT OF PUBLIC WORKS		
DIVISION OF TRAFFIC ENGINEERING PAUL D. GUNZELMAN, P.E. TRAFFIC ENGINEER		SHEET 113 OF 187