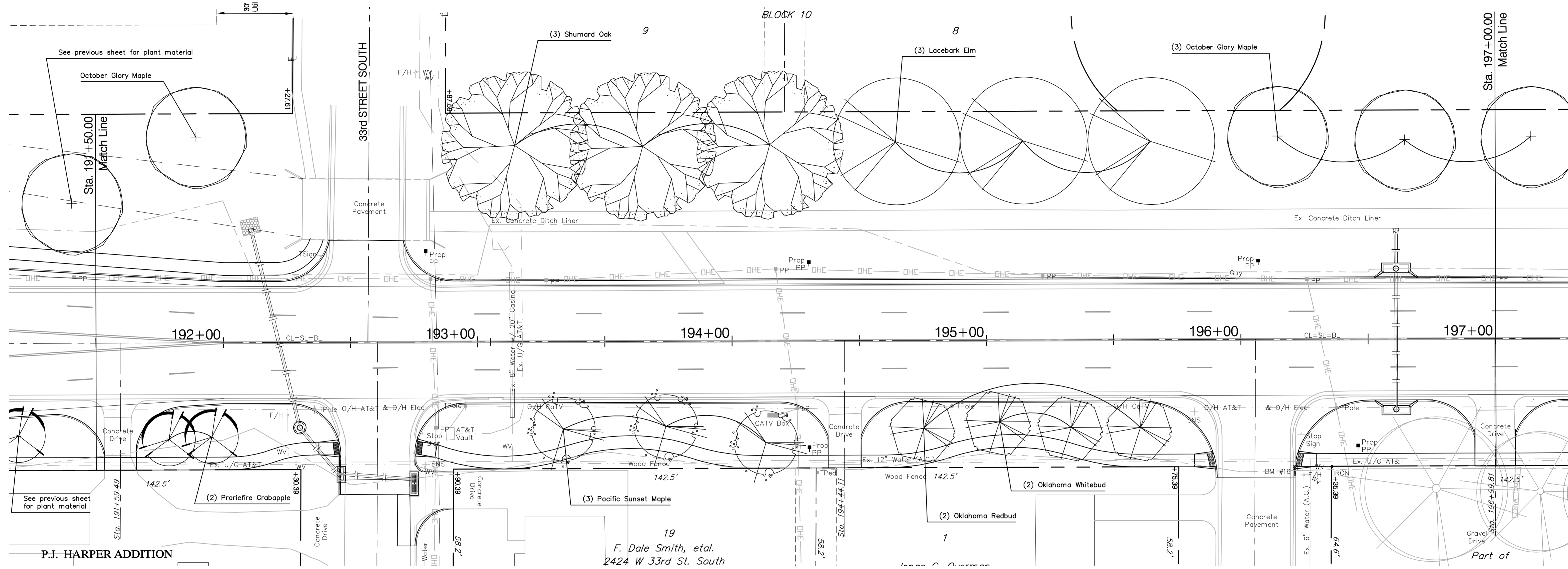
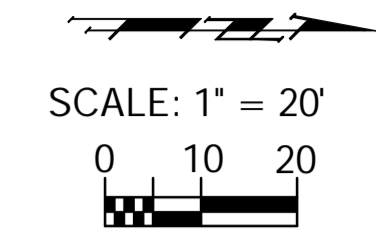


BENCHMARK:
 BM #16 - "Chiseled in the Top of the North Curb Return in the Northwest Corner of Meridian and Heuett Street Sta. 196+21, 50' Rt. Elev. = 1283.90 MSL



Plant List - This Sheet

Quantity	SCIENTIFIC	COMMON	SIZE	METHOD	NOTE
4	<i>Acer rubrum</i> 'October Glory'	October Glory	2" Cal	B&B	Full & Healthy
3	<i>Acer truncatum</i> 'Pacific Sunset'	Pacific Sunset Maple	2" Cal	B&B	Full & Healthy
2	<i>Cercis canadensis</i> ssp. <i>texensis</i> 'Oklahoma'	Oklahoma Redbud	2" Cal	B&B	Full & Healthy
2	<i>Cercis canadensis</i> ssp. <i>texensis</i> 'Oklahoma Whitebud'	Oklahoma Whitebud	2" Cal	B&B	Full & Healthy
2	<i>Malus</i> 'Prairiefire'	Prairie Fire Crabapple	2" Cal	B&B	Full & Healthy
3	<i>Quercus shumardii</i>	Shumard Oak	2" Cal	B&B	Full & Healthy
3	<i>Ulmus parvifolia</i> 'Allee'	Lacebark Elm	2" Cal	B&B	Full & Healthy