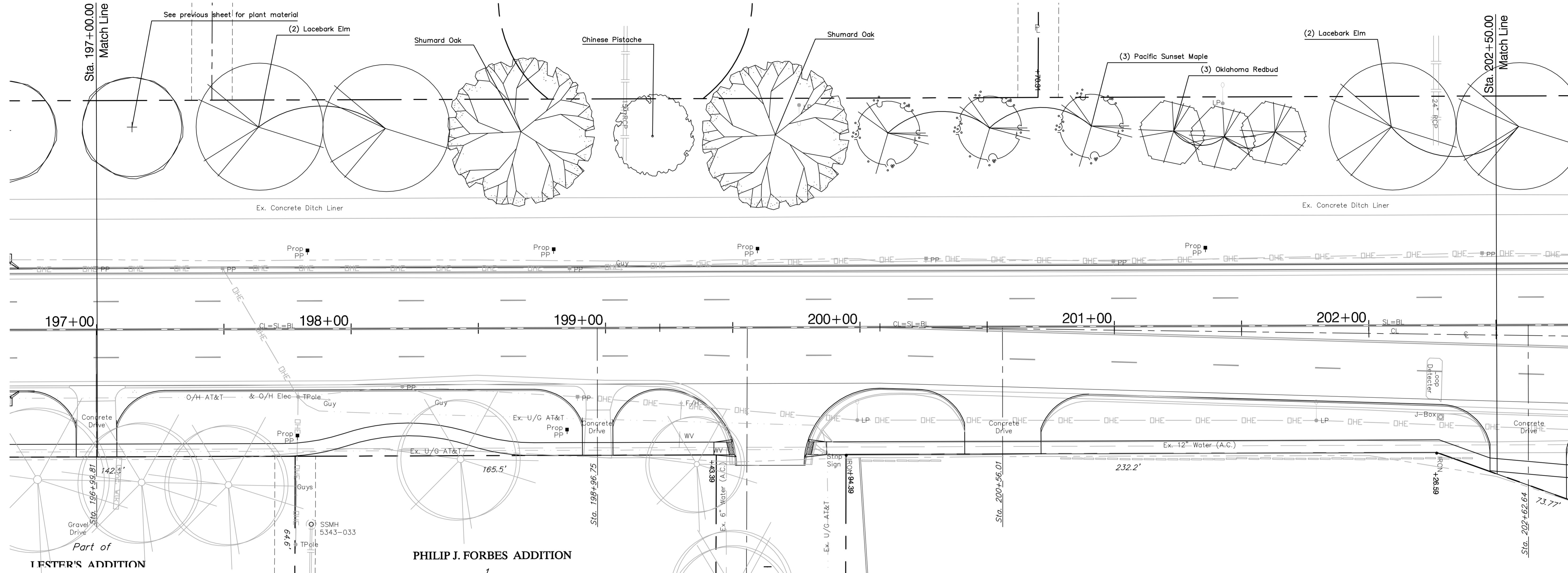
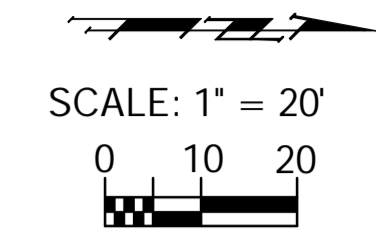


BENCHMARK:
 BM #16 - "C" Chiseled in the Top of the North Curb Return in the Northwest Corner of Meridian and Heuett Street
 Sta. 196+21, 50' Rt.
 Elev. = 1283.90 MSL



Plant List - This Sheet

Quantity	SCIENTIFIC	COMMON	SIZE	METHOD	NOTE
3	Acer truncatum 'Pacific Sunset'	Pacific Sunset Maple	2" Cal	B&B	Full & Healthy
3	Cercis canadensis ssp. texensis 'Oklahoma'	Oklahoma Redbud	2" Cal	B&B	Full & Healthy
1	Pistacia chinensis	Chinese Pistache	2" Cal	B&B	Full & Healthy
2	Quercus shumardii	Shumard Oak	2" Cal	B&B	Full & Healthy
4	Ulmus parvifolia 'Allee'	Lacebark Elm	2" Cal	B&B	Full & Healthy