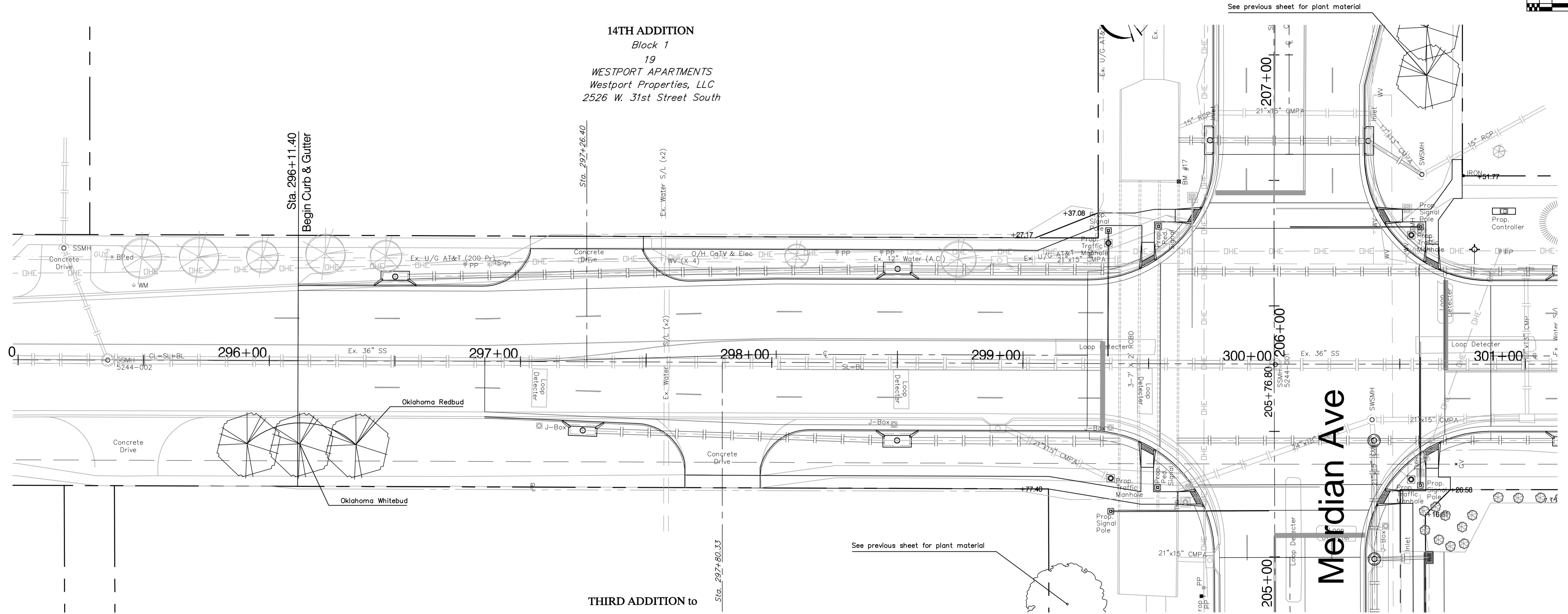
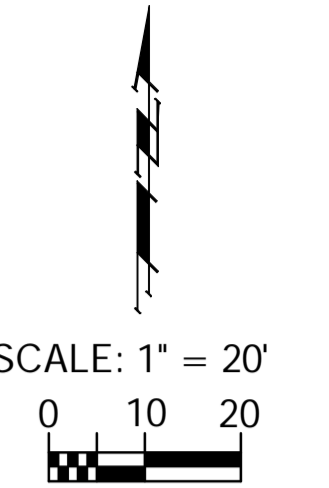


BENCHMARK:
 BM #17 - City of Wichita Disc on the North Hubguard of the
 RCBC in the Northwest Corner of the Intersection of
 Meridian and 31st Street North
 Sta. 206+50, 40' Lt.
 Elev. = 1284.28 MSL



Plant List - This Sheet

Quantity	SCIENTIFIC	COMMON	SIZE	METHOD	NOTE
2	Cercis canadensis ssp. texensis 'Oklahoma'	Oklahoma Redbud	2" Cal	B&B	Full & Healthy
1	Cercis canadensis ssp. texensis 'Oklahoma Whitebud'	Oklahoma Whitebud	2" Cal	B&B	Full & Healthy

Drawing File: E:\eng\Meridian_47th to 31st\Landscap.dwg

Design: BKB
 Drawn: BKB
 Approved: PJM
 Scale: 1"=20'

Project No. 0510E396 CAPITAL IMPROVEMENT PROJECT
 31ST STREET SOUTH LANDSCAPE
 Sta. 295+50.00 to Sta. 301+00.00
 MERIDIAN AVENUE - 47TH STREET SOUTH TO 31ST STREET SOUTH

Baughman Company, P.A.
 315 Ellis St. Wichita, KS 67211 P 316-262-7271 F 316-262-0149
 ENGINEERING | SURVEYING | PLANNING | LANDSCAPE ARCHITECTURE

September 2009
 SHEET
 OF 158
 187