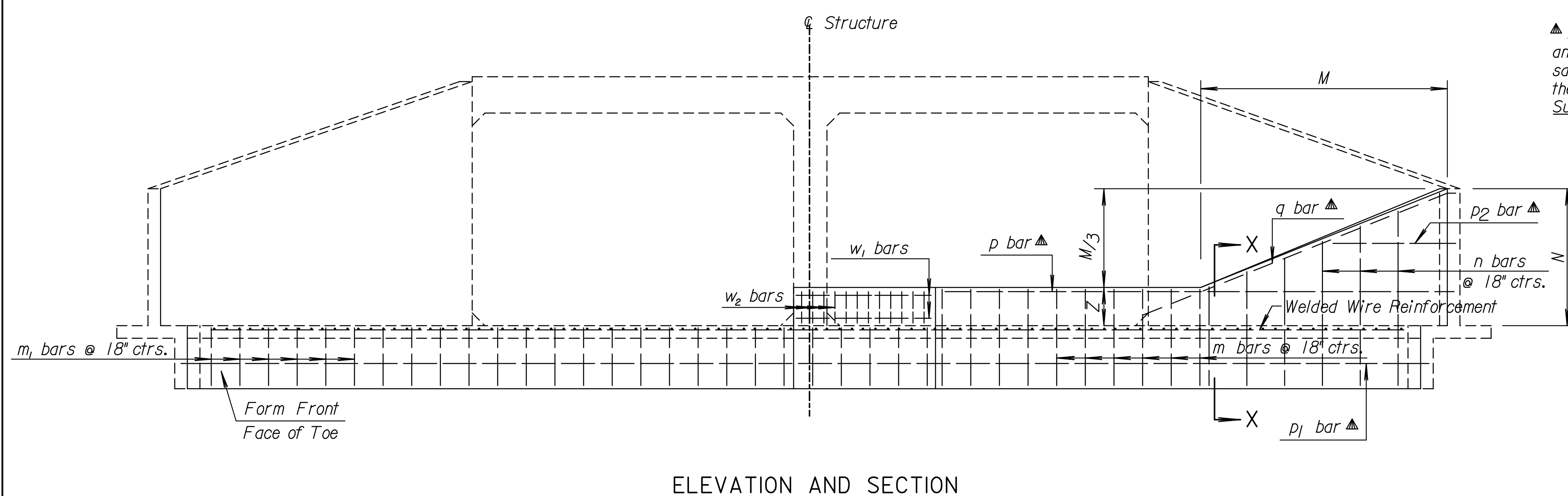
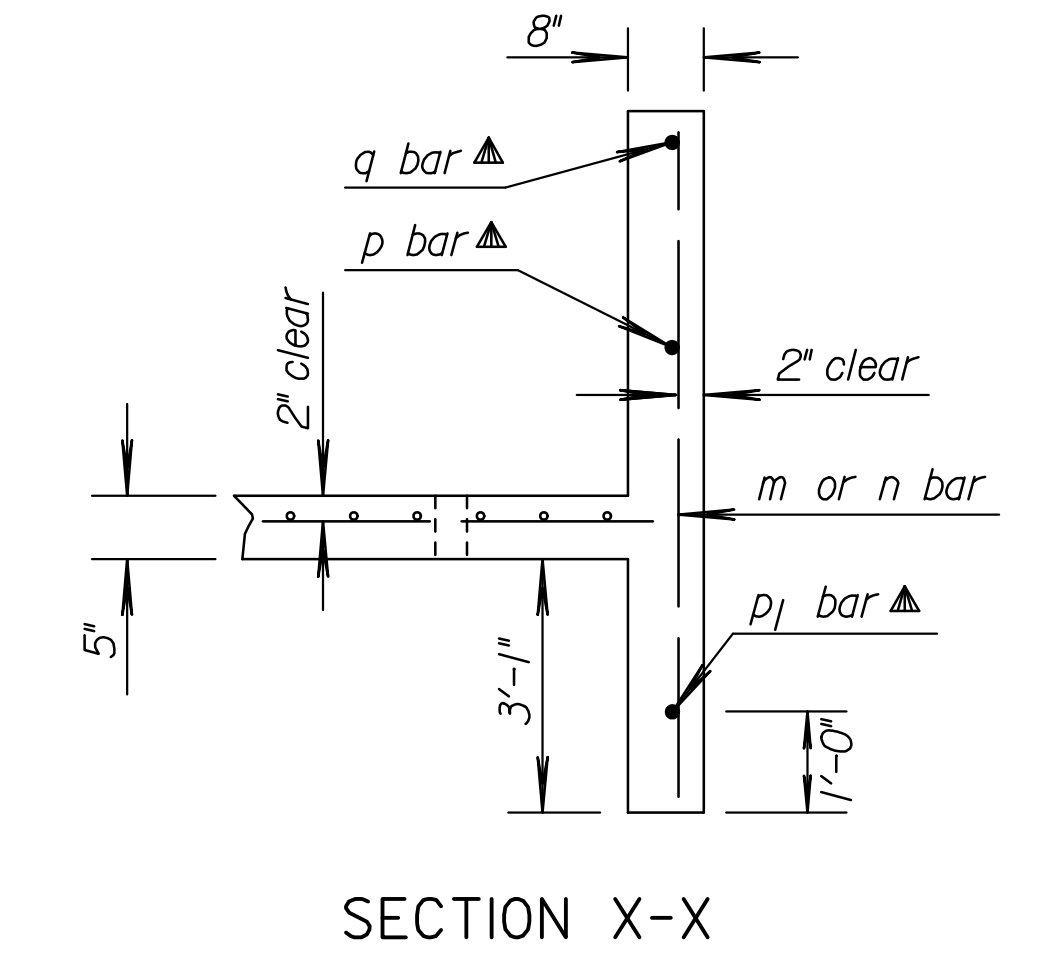
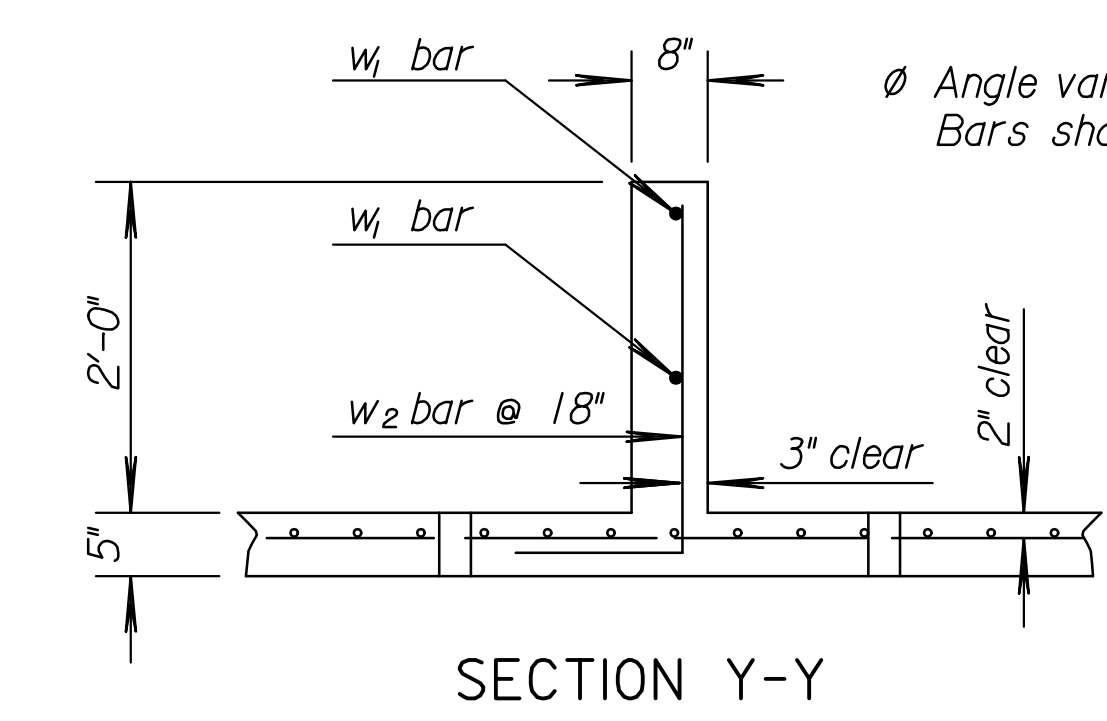
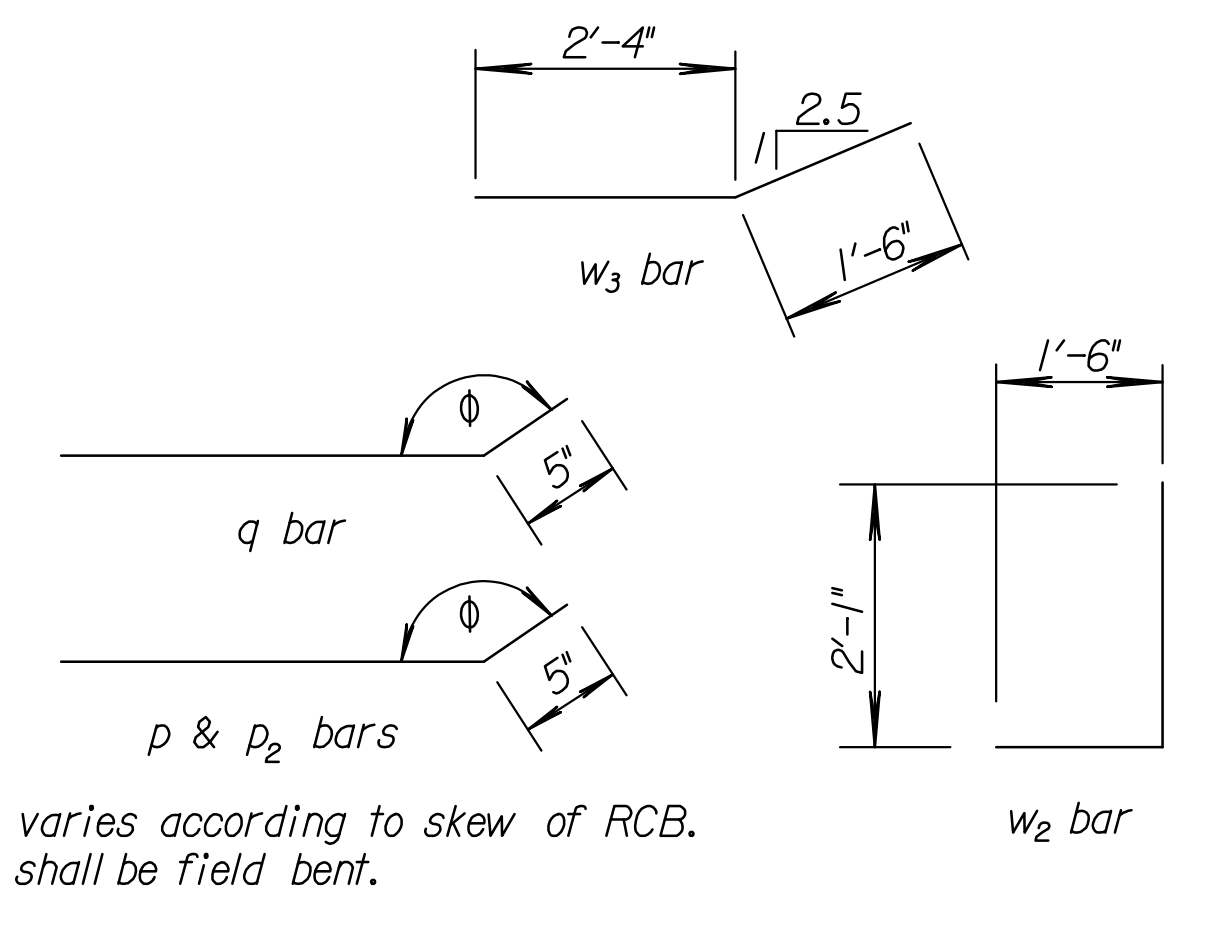


GENERAL NOTE
 CONCRETE: Concrete Grade 4.0 shall be used throughout. All exposed edges shall be finished with an edging tool.
 REINFORCING: All dimensions are to ϕ of bar except where noted. All reinforcing bars are No. 4. Reinforcing bars shall be Grade 60 billet steel. Minimum clearance on all reinforcement shall be 2". Welded wire reinforcement shall be paid as pounds of reinforcing steel. When holes in the apron are warranted by drainage conditions they shall be constructed as directed by the Engineer.



▲ Drill and grout p and q bars into wingwalls and p1 bar into wing footings when the soil saver end wall is constructed separately from the wingwalls. Drilling and grouting shall be Subsidiary to the bid item "Reinforcing Steel".



Letter	B	C	SIDE RIGHT		SKEW 00°		M	N	P	Q	Z= 2'-0"
			K _S	L ₁	L _S						
Dimension	17'-0"	31'-2"	6 1/2"	6 1/2"	2'-9 1/2"	2'-9 1/2"	15'-6"	7'-2"	68'-0 3/4"	15'-7 1/2"	
Bar	m	m ₁	n	p	p ₁	p ₂	q	w ₁	w ₂	w ₃	Sq. Ft. WWR 731 = 154 Lbs.
Number	8	26	10	1	2	1	1	2	13	2	Grade 4.0 Conc. 19.3 Cu.Yd.
Length	5'-2"	3'-2"	Varies	27'-1"	36'-0"	7'-2"	17'-10"	19'-2"	3'-7"	3'-10"	Reinf. Steel (Epoxy Ctd.) 278 Lbs.

n varies from 5'-4" to 9'-10" by 6" incr.

Culvert Size	Side	Z	Skew	Rotation
2-16'x9'	Right	2'-0"	0°	0°

NO.	DATE	REVISIONS	BY	APP'D
2	04-28-05	Chg. Class to Grade concrete, WWR	S.W.K.	J.O.B.
1	08-01-00	Revised Drill & Grout Note	R.J.S.	J.O.B.

KANSAS DEPARTMENT OF TRANSPORTATION

SOIL SAVER FOR R.C. CULVERTS

RDS20

FHWA APPROVAL	6-10-05	APP'D. James O. Brewer
DESIGNED	DETAILED CWPJ	QUANTITIES CWPJ
DESIGN CK.	DETAIL CK.	TRACE CK. Seltz

Drawn By: rjm
 Plotted: 11/9/2009
 File: i:\2009\09430\Office Check\09430-SoilSaver-2-16x9.dgn