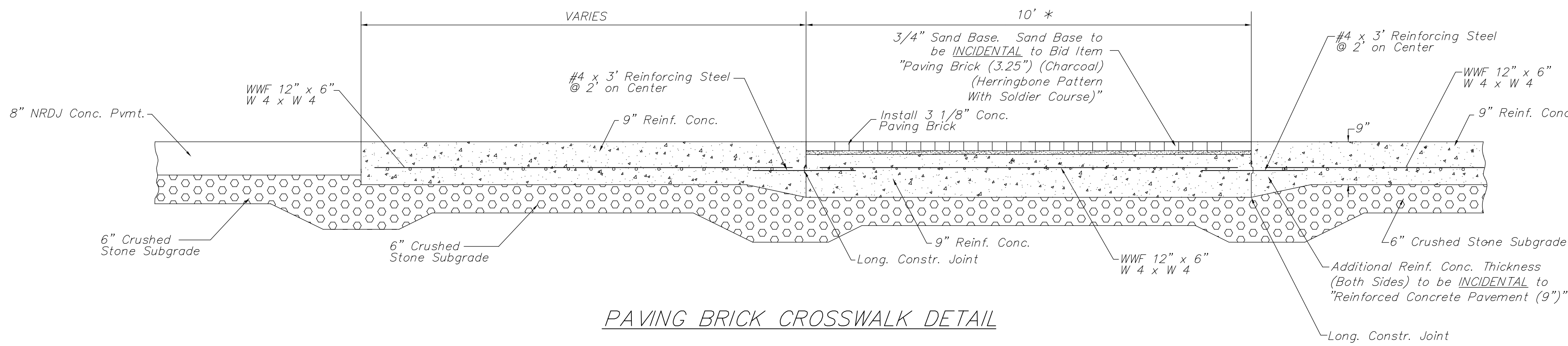


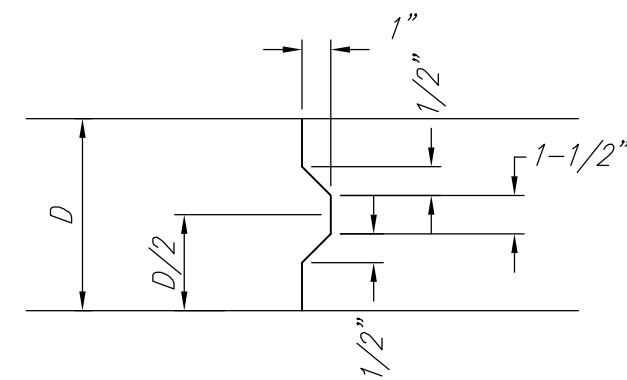
FHWA REGION NO.	STATE	PROJECT NO.	FISCAL YEAR	SHEET NO.	TOTAL SHEETS
7	KANSAS	87N-0503-01	2009	9	101

FEDERAL Project No. ARRA-N050(301)

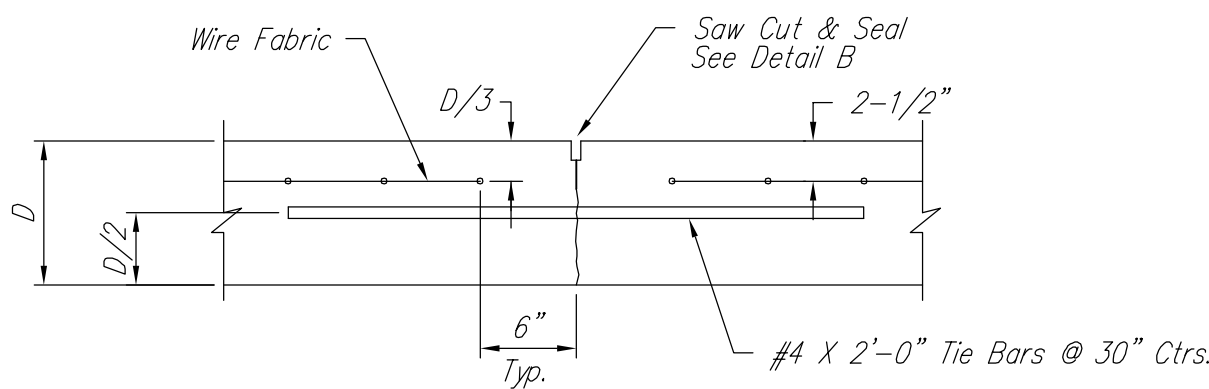


PAVING BRICK CROSSWALK DETAIL

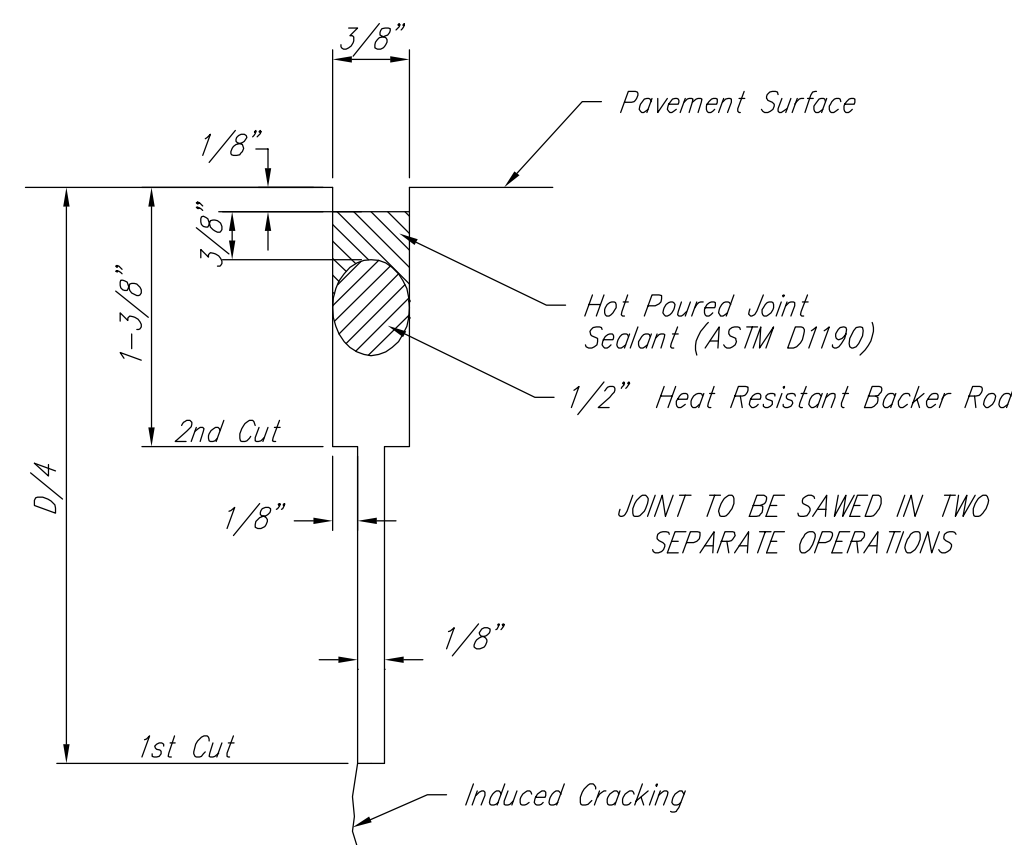
* Brick Pavers to be installed in crosswalk and/or median locations shall be custom cut to match final concrete dimensions. Contractor shall construct crosswalk blackouts to match nominal paver width dimensions. Fill in with "brick slivers" (defined as pieces smaller than 1/2 of the shortest paver dimension) shall not be allowed, except at the end of crosswalk locations.



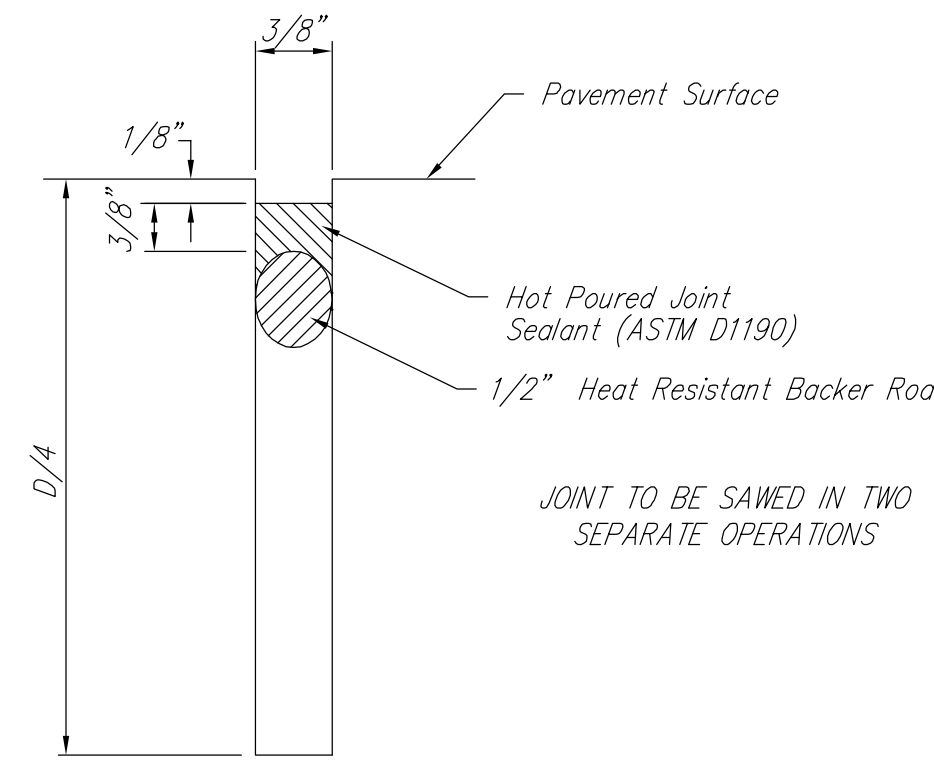
KEYWAY DETAIL



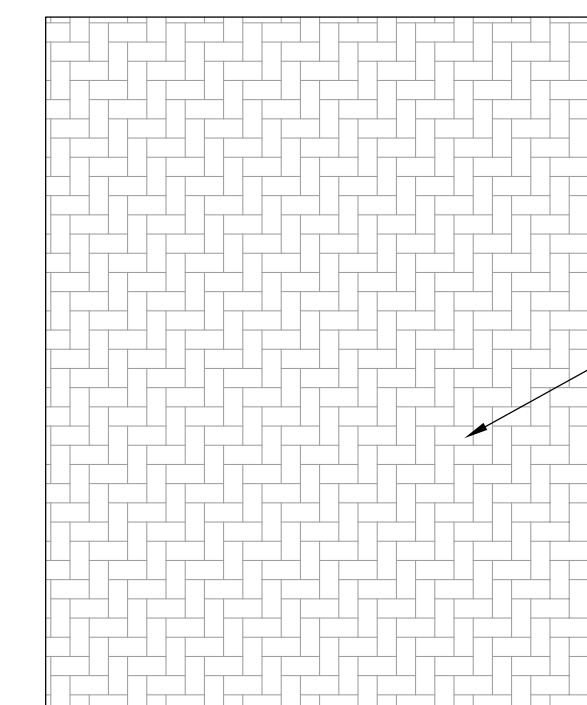
LONGITUDINAL JOINT DETAIL (L.J.)



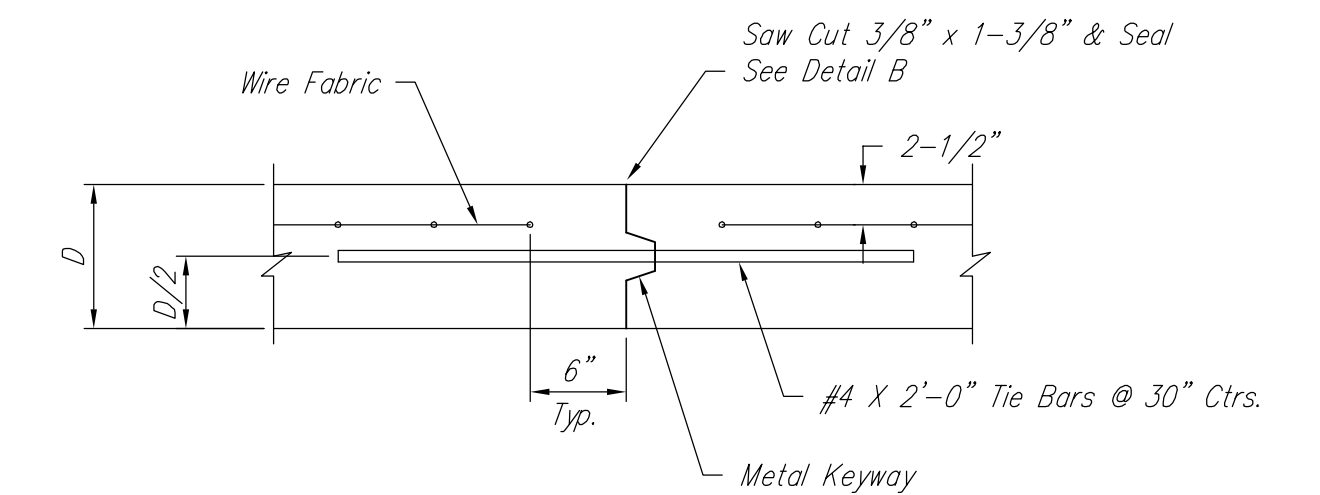
SAW JOINT DETAIL "A"



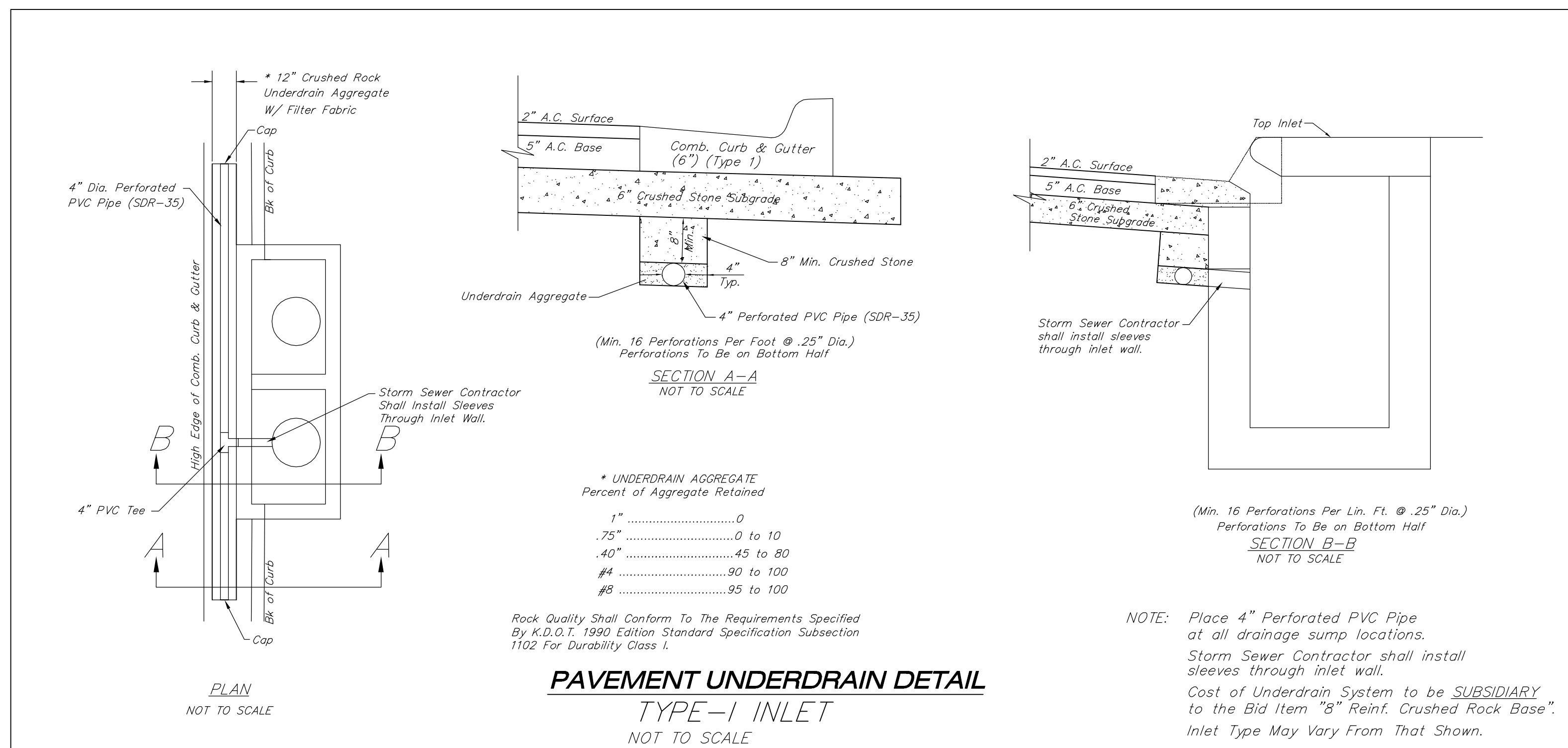
SAW JOINT DETAIL "B"



Paver Pattern Detail

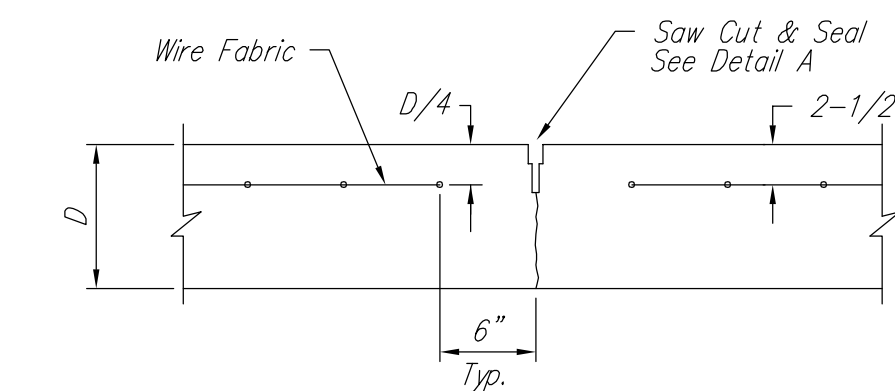


OPTIONAL LONGITUDINAL JOINT DETAIL (L.J.) (CONSTRUCTION JOINT)

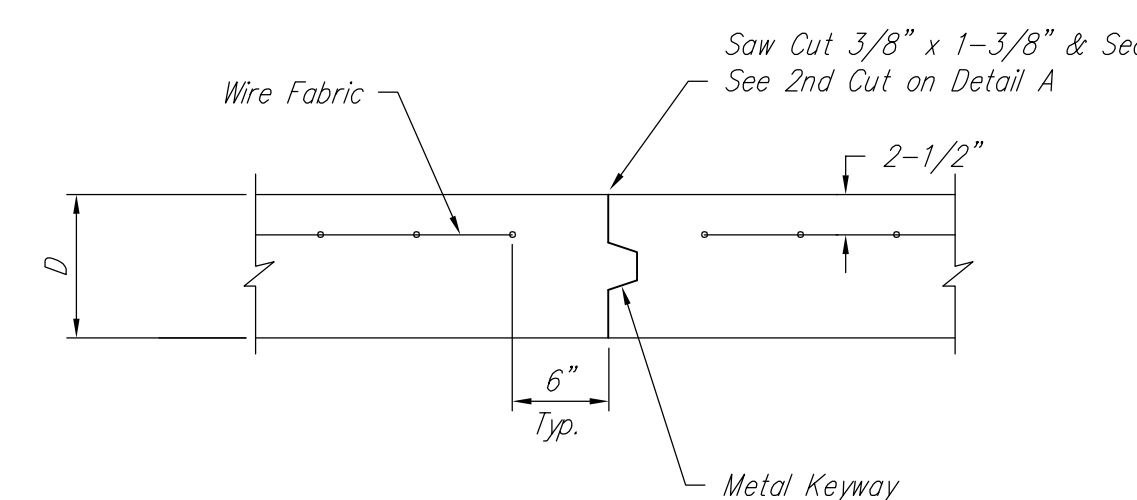


PAVEMENT UNDERDRAIN DETAIL TYPE-1 INLET NOT TO SCALE

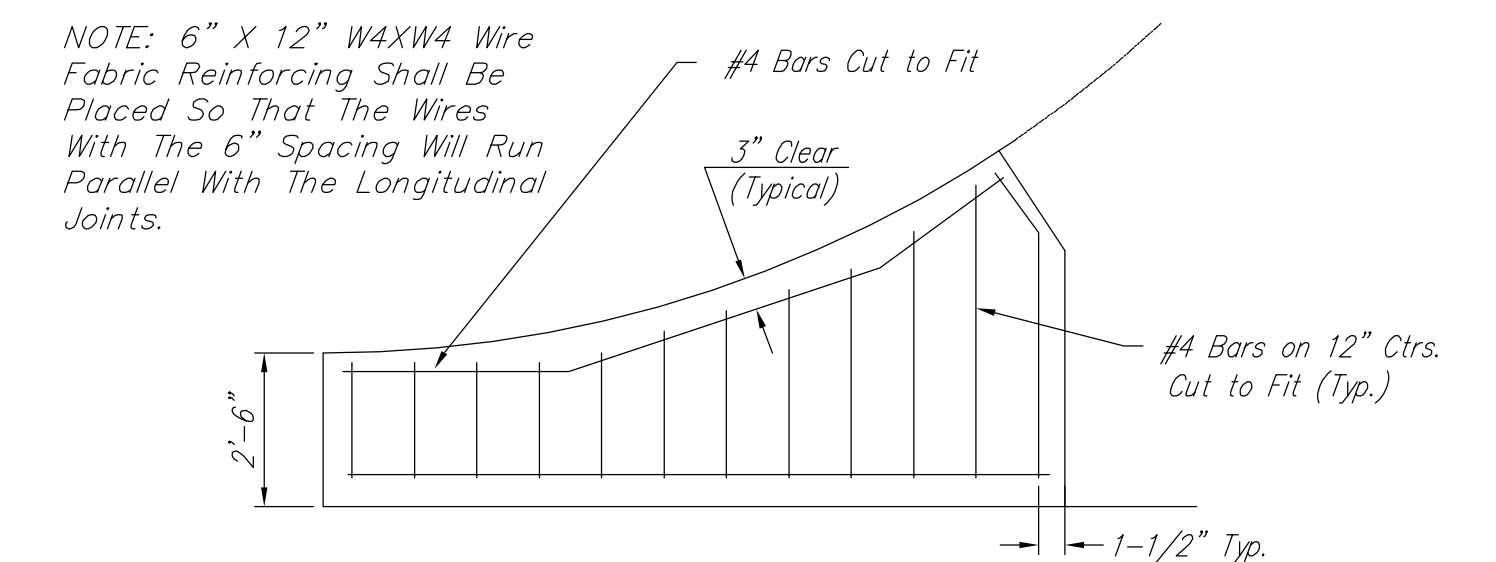
NOTE: Place 4" Perforated PVC Pipe at all drainage sump locations. Storm Sewer Contractor shall install sleeves through inlet wall. Cost of Underdrain System to be SUBSIDIARY to the Bid Item "8" Reinf. Crushed Rock Base". Inlet Type May Vary From That Shown.



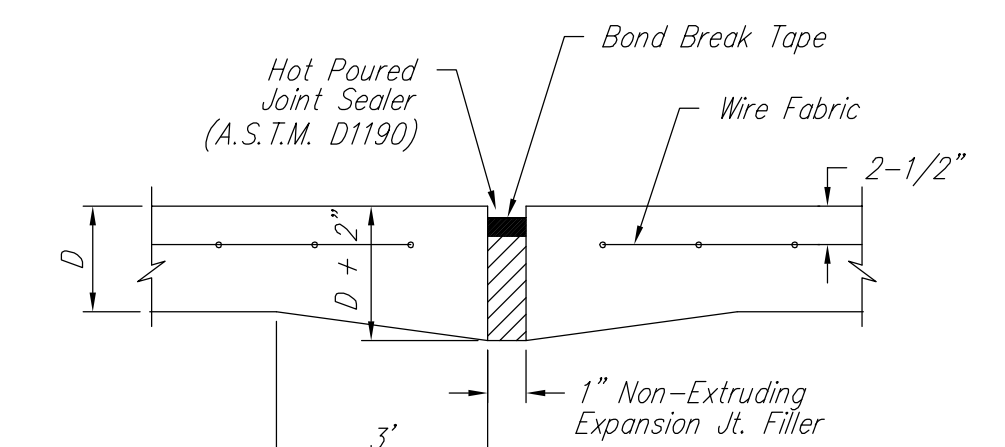
CONTRACTION JOINT DETAIL (C.J.)



OPTIONAL CONTRACTION JOINT (CONSTRUCTION JOINT)



WING REINFORCING DETAIL



EXPANSION JOINT

NOTE: Extra Thickness to be Subsidiary to Price of Square Yards Pavement