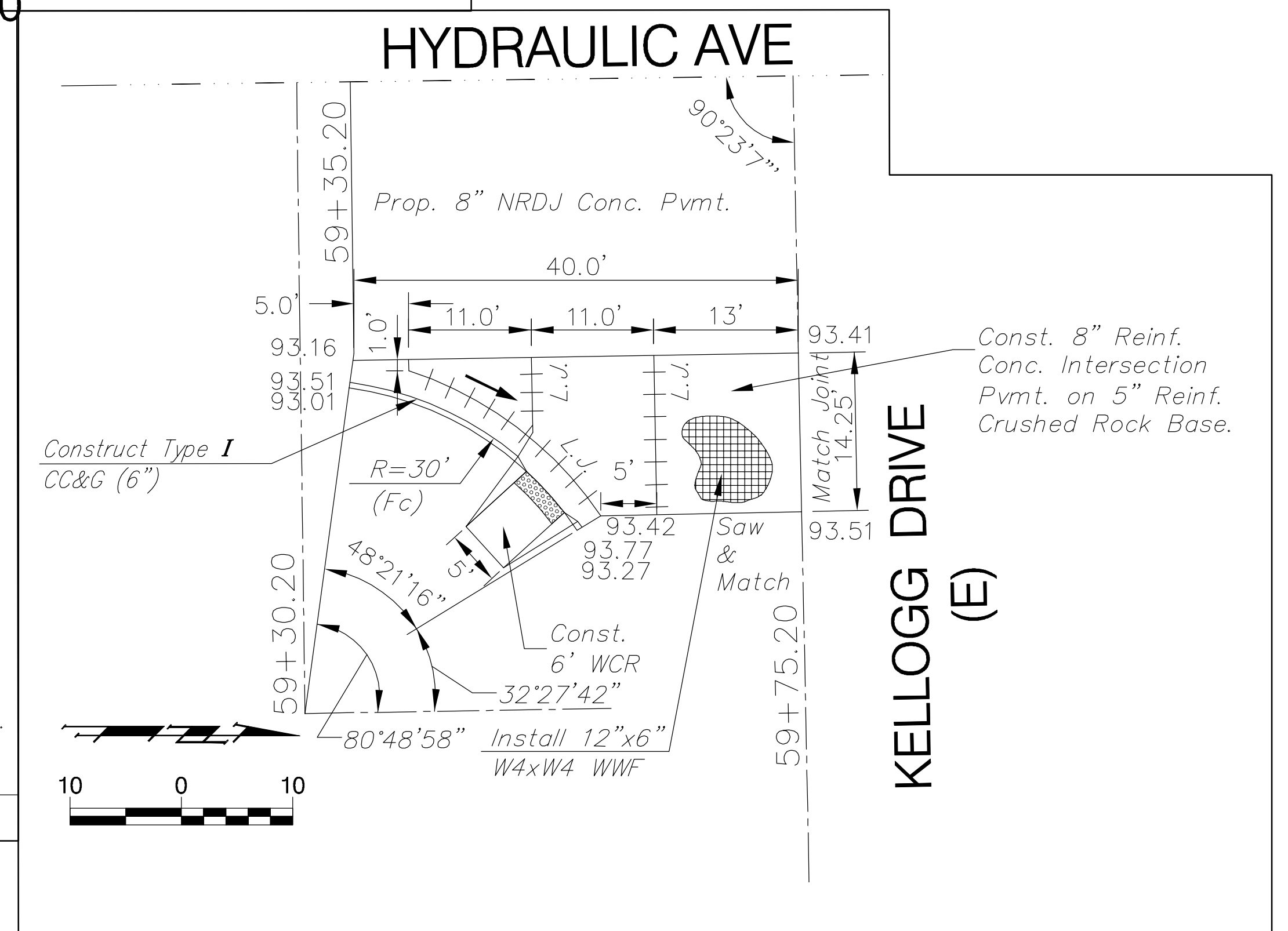
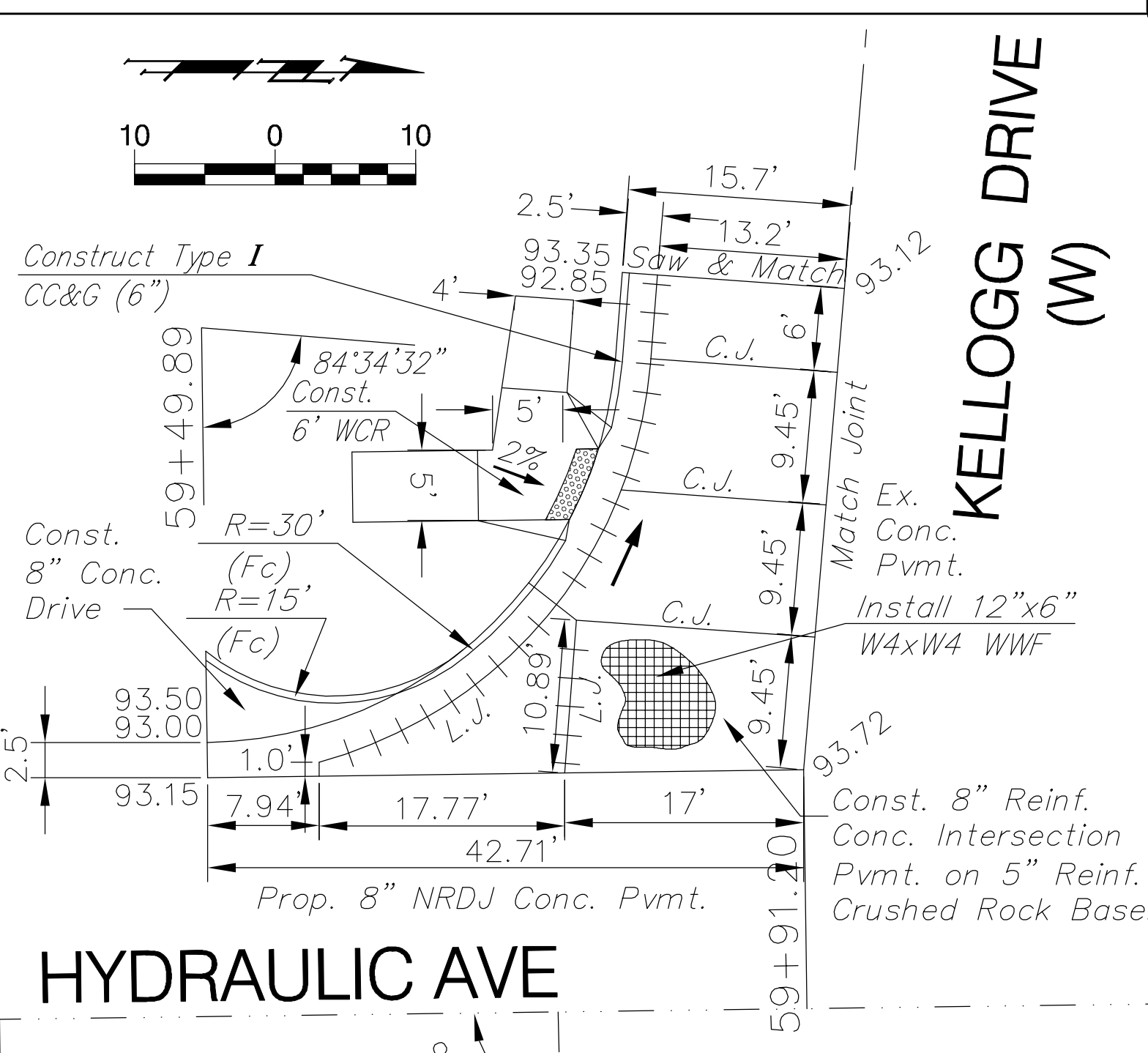
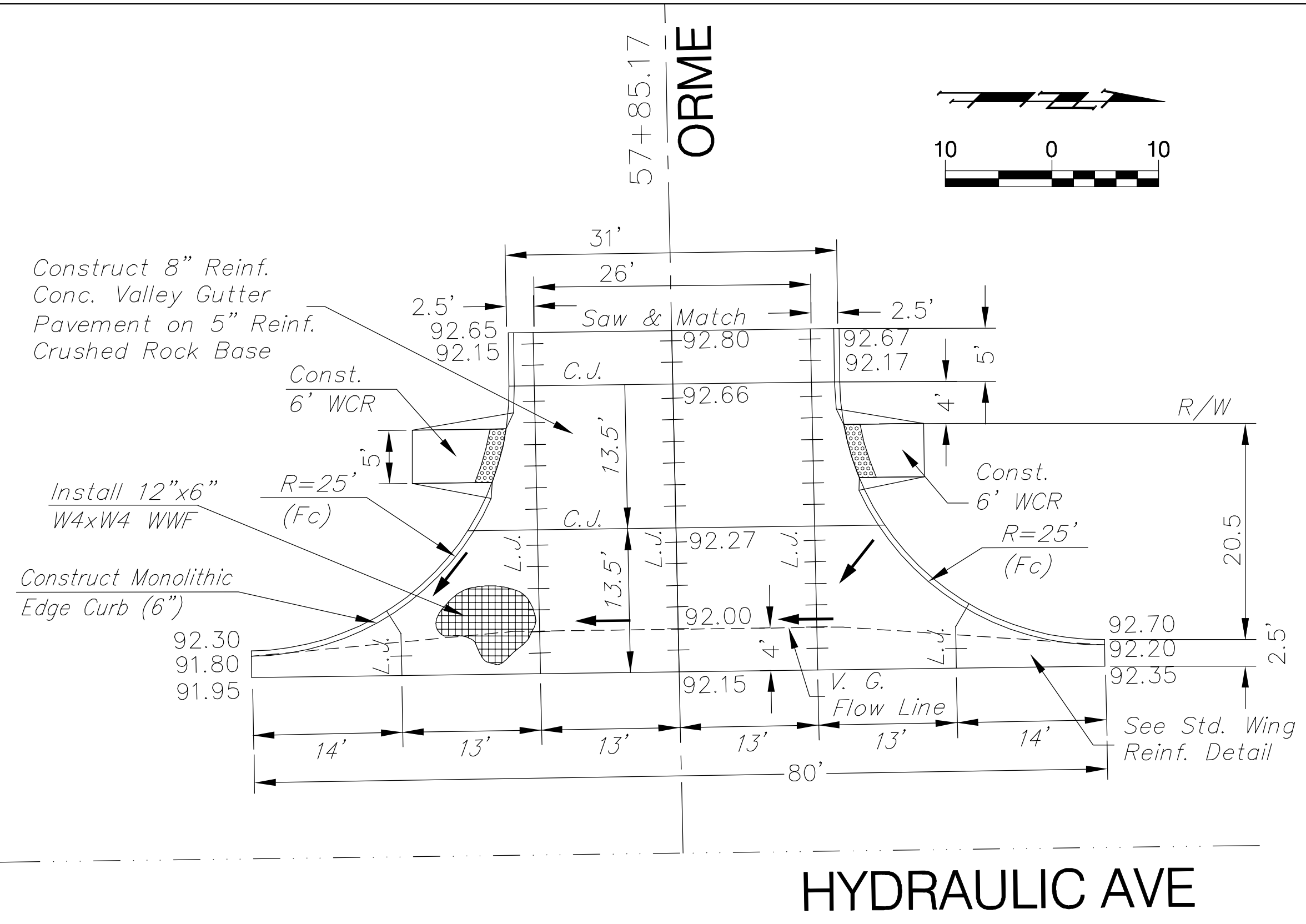
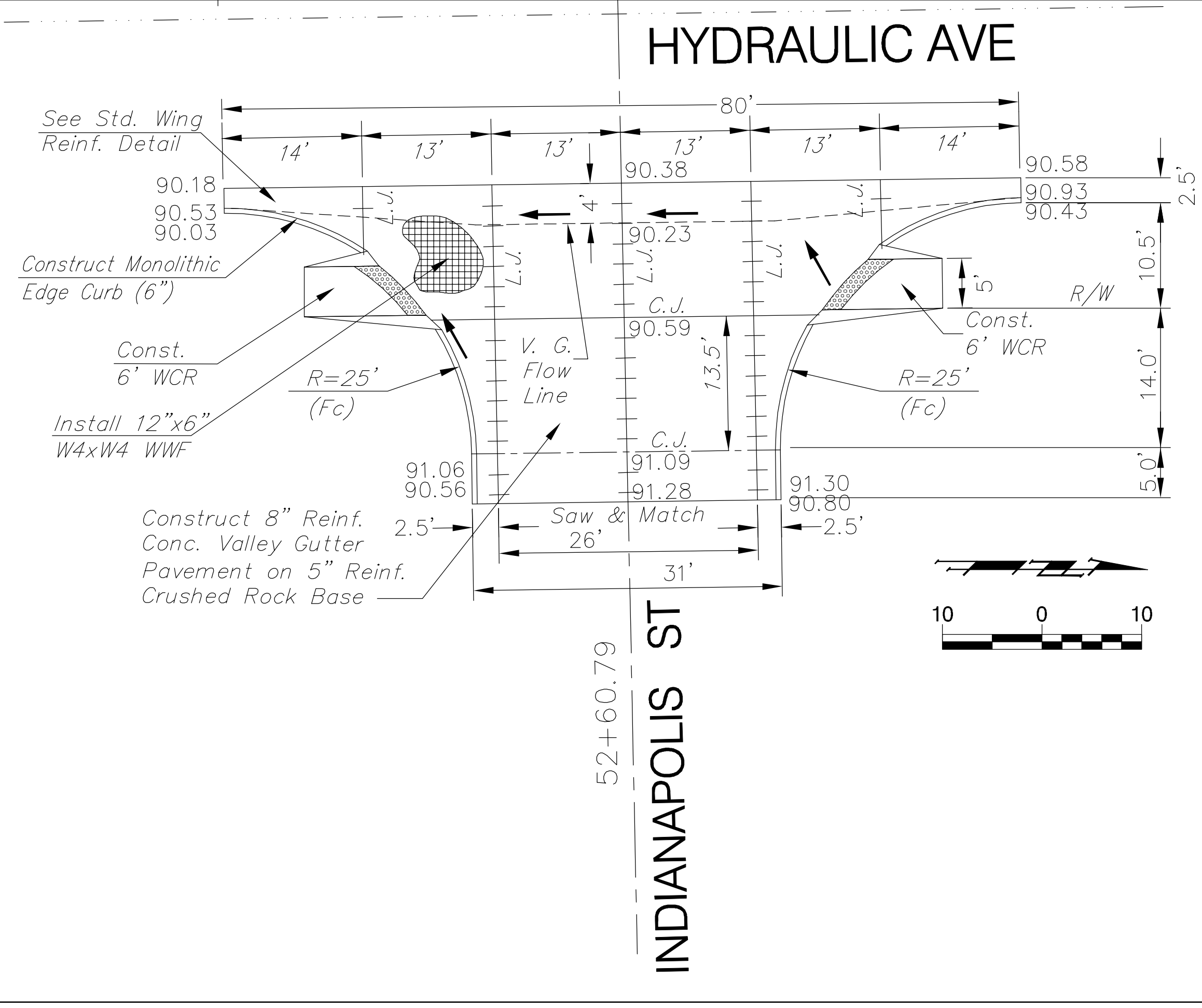
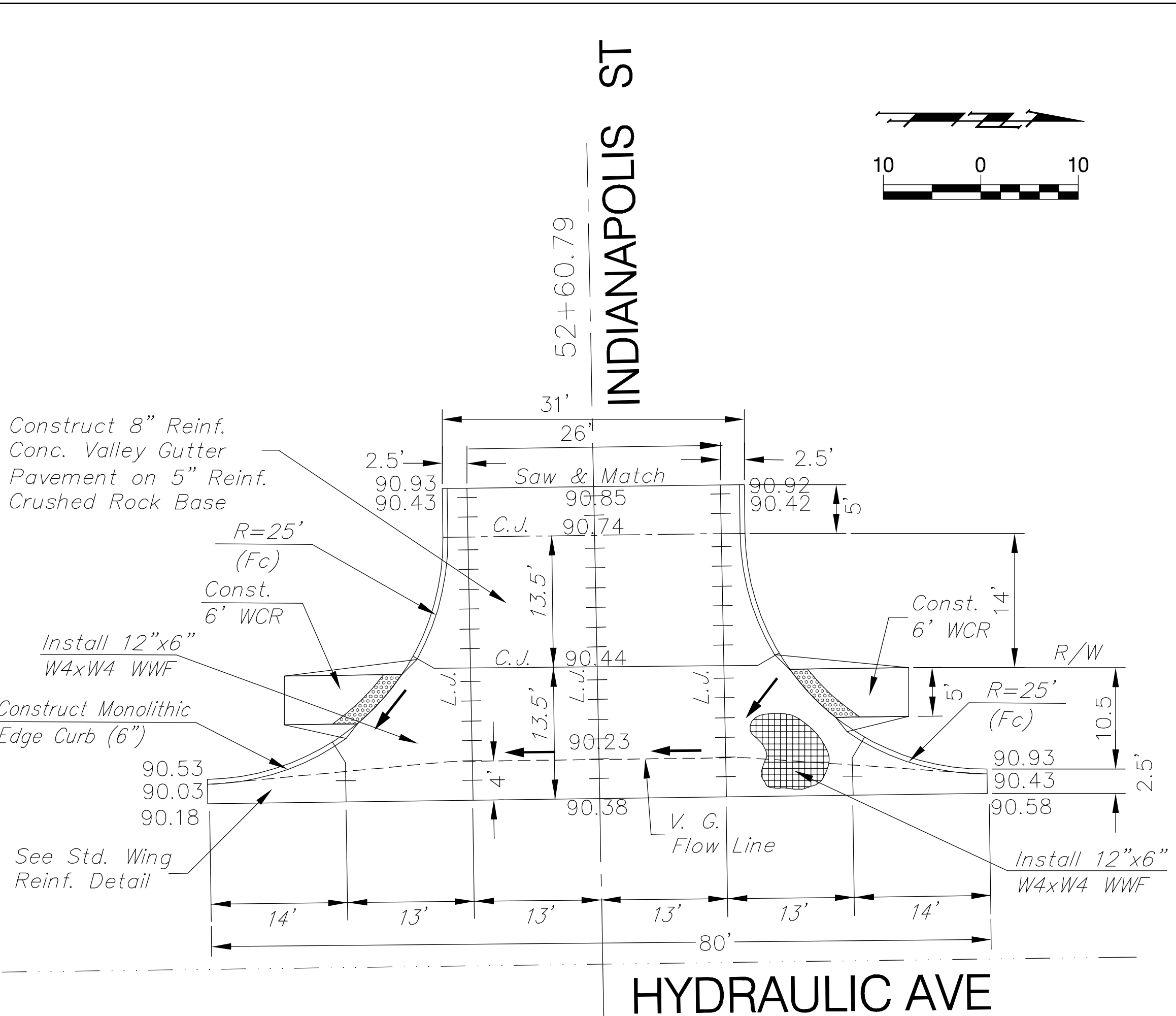


| FHWA REGION NO. | STATE  | PROJECT NO. | FISCAL YEAR | SHEET NO. | TOTAL SHEETS |
|-----------------|--------|-------------|-------------|-----------|--------------|
| 7               | KANSAS | 87N-0503-01 | 2009        | 13        | 101          |

FEDERAL Project No. ARRA-N050(301)



Drawing File: E:\eng\Hydraulic\Kellogg to Harry Pave\Details

|               |   |                             |
|---------------|---|-----------------------------|
| Design: KK    | Project No. 0710 E 968                          | CAPITAL IMPROVEMENT PROJECT |
| Drawn: Staff  | HYDRAULIC                                       |                             |
| Approved: JFB | Valley Gutter Details                           |                             |
| Scale: NOTED  | HYDRAULIC PAVING IMPROVEMENTS - HARRY & KELLOGG |                             |

**Baughman Company, P.A.**  
 315 Ellis St. Wichita, KS 67211 P 316-262-7271 F 316-262-0149  
 ENGINEERING | SURVEYING | PLANNING | LANDSCAPE ARCHITECTURE