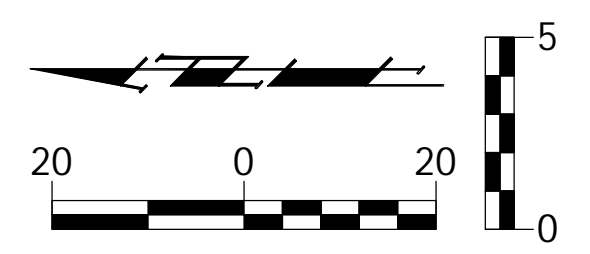
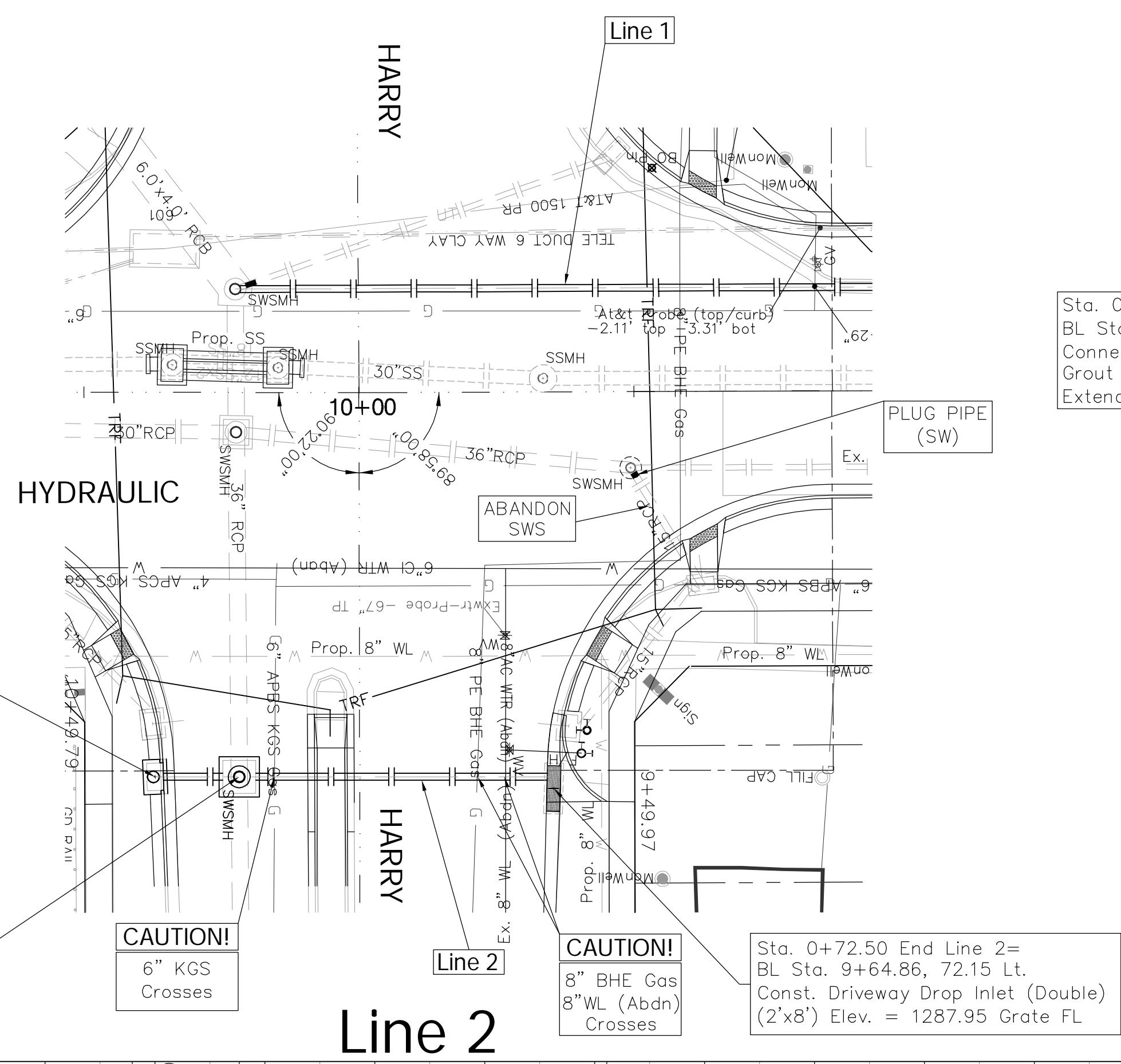


FHWA REGION NO.	STATE	PROJECT NO.	FISCAL YEAR	SHEET NO.	TOTAL SHEETS
7	KANSAS	87N-0503-01	2009	34	101

FEDERAL Project No. ARRA-N050(301)



SCALE:  
1" = 20' Horizontal  
1" = 5' Vertical



Sta. 0+00 Begin Line 2 =  
Sta. 10+36.92, 69.90' Lt. BL  
Const. Type I Curb Inlet (Single)  
(5' x 3') Elev.=1288.50 Top

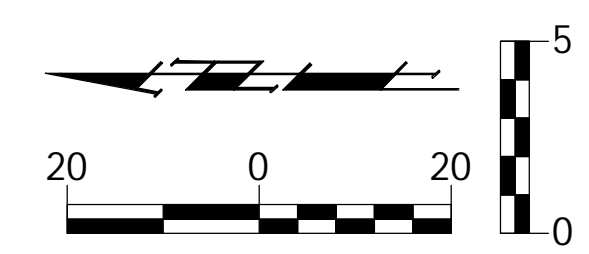
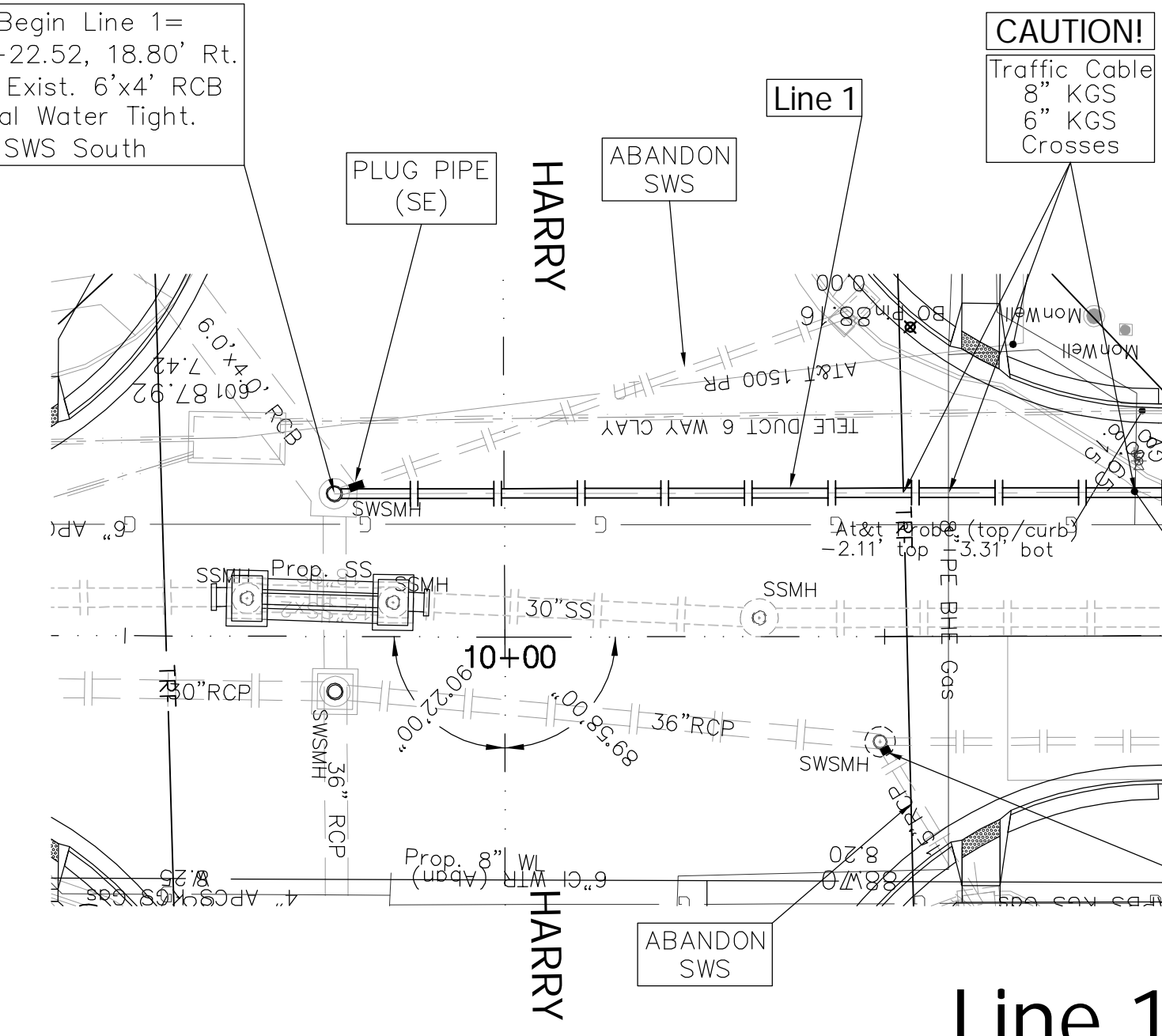
Sta. 0+15.30 Line 2 =  
BL Sta. 10+21.62, 69.91' Lt  
Const. Reinf. Conc. Manhole  
(6'x6') over Exist 36" Brick Arch  
Elev.=1288.42

CAUTION!  
6" KGS  
Crosses

CAUTION!  
8" BHE Gas  
8" WL (Abdn)  
Crosses

Sta. 0+72.50 End Line 2 =  
BL Sta. 9+64.86, 72.15 Lt.  
Const. Driveway Drop Inlet (Double)  
(2'x8') Elev. = 1287.95 Grate FL

Sta. 0+00 Begin Line 1 =  
BL Sta. 10+22.52, 18.80' Rt.  
Connect to Exist. 6'x4' RCB  
Grout & Seal Water Tight.  
Extend 15" SWS South



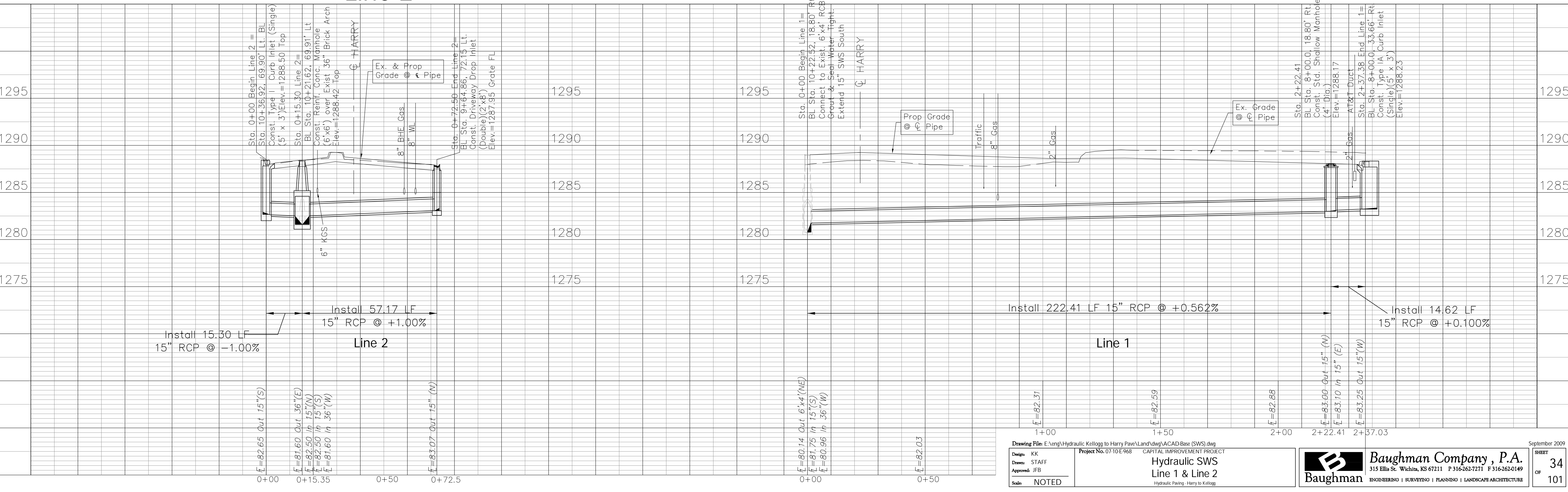
SCALE:  
1" = 20' Horizontal  
1" = 5' Vertical

CAUTION!  
2" Gas  
AT&T Duct  
Crosses

Sta. 2+37.38 End Line 1 =  
BL Sta. 8+00.0, 33.66' Rt.  
Const. Type IA Curb Inlet  
(Single)(5' x 3')  
Elev.=1288.23

Sta. 2+22.41  
BL Sta. 8+00.0, 18.80' Rt.  
Const. Std. Shallow Manhole  
(4' Dia.)  
Elev.=1288.17

CAUTION!  
Traffic Cable  
8" KGS  
6" KGS  
Crosses



Install 15.30 LF  
15" RCP @ -1.00%

Install 57.17 LF  
15" RCP @ +1.00%

Line 2

Sta. 0+00 Begin Line 1 =  
BL Sta. 10+22.52, 18.80' Rt.  
Connect to Exist. 6'x4' RCB  
Grout & Seal Water Tight.  
Extend 15" SWS South

Install 222.41 LF 15" RCP @ +0.562%

Line 1

Install 14.62 LF  
15" RCP @ +0.100%

Design: KK  
Drawn: STAFF  
Approved: JFB  
Scale: NOTED

Project No. 0710 E 968 CAPITAL IMPROVEMENT PROJECT  
Hydraulic SWS  
Line 1 & Line 2  
Hydraulic Paving - Harry to Kellog

**Baughman**  
Baughman Company, P.A.  
315 Ellis St. Wichita, KS 67211 P 316-262-7271 F 316-262-0149  
ENGINEERING | SURVEYING | PLANNING | LANDSCAPE ARCHITECTURE

September 2009  
SHEET 34 OF 101