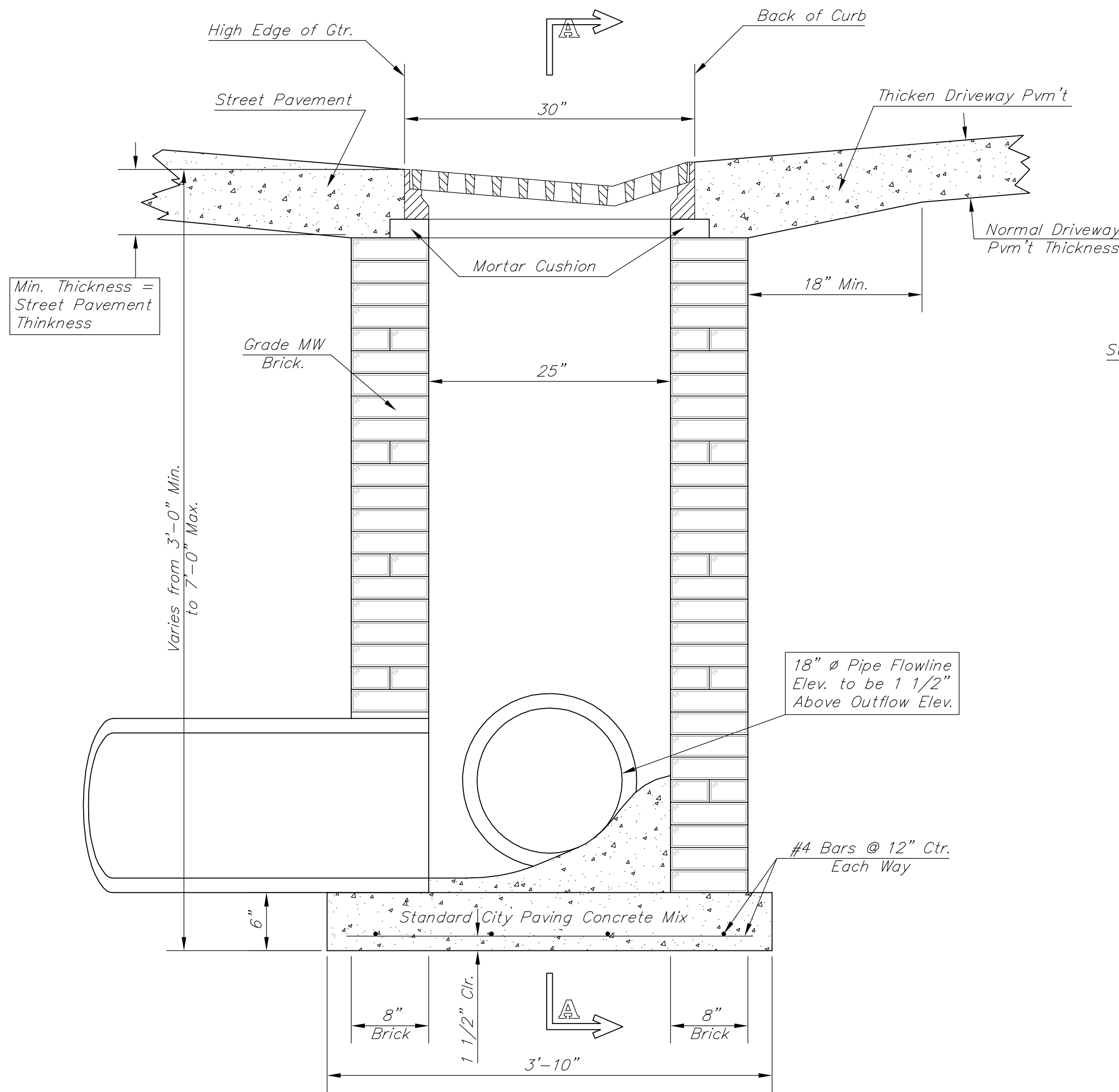
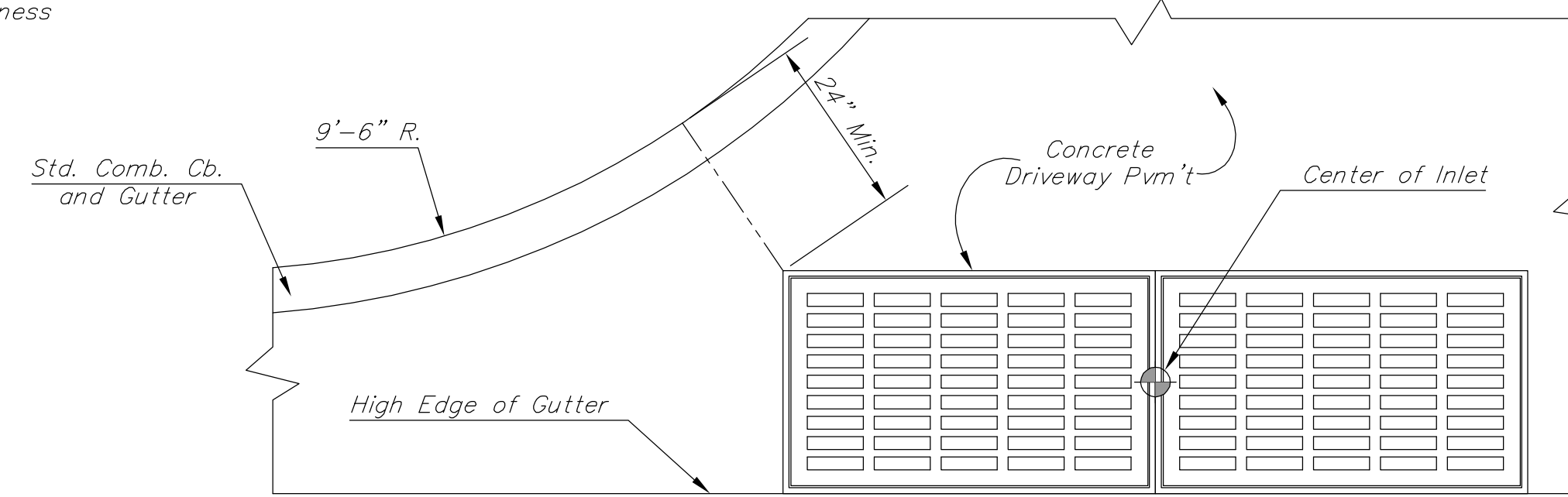


FHWA REGION NO.	STATE	PROJECT NO.	FISCAL YEAR	SHEET NO.	TOTAL SHEETS
7	KANSAS	87N-0503-01	2009	49	101

FEDERAL Project No. ARRA-N050(301)



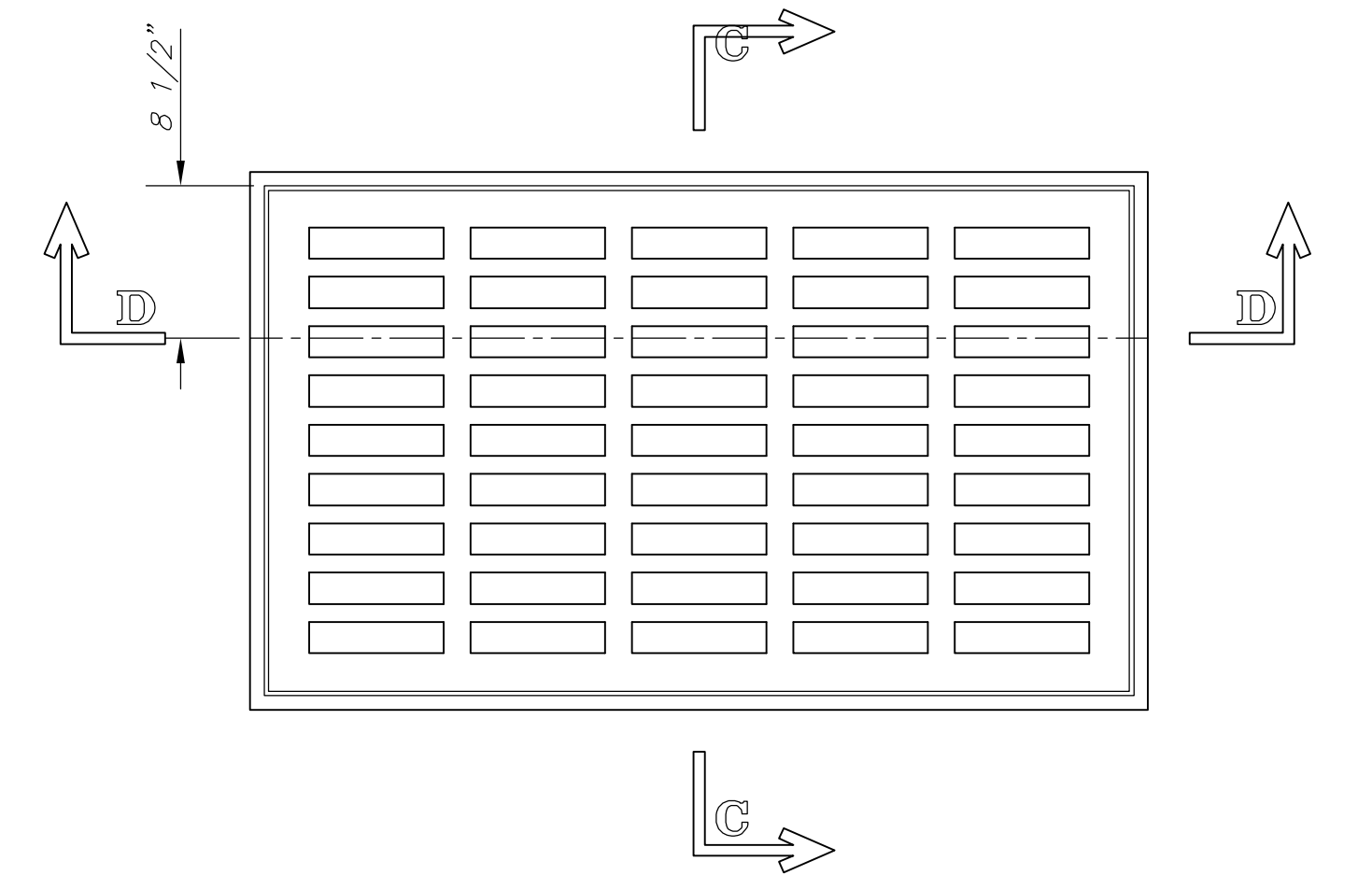
SECTION B-B



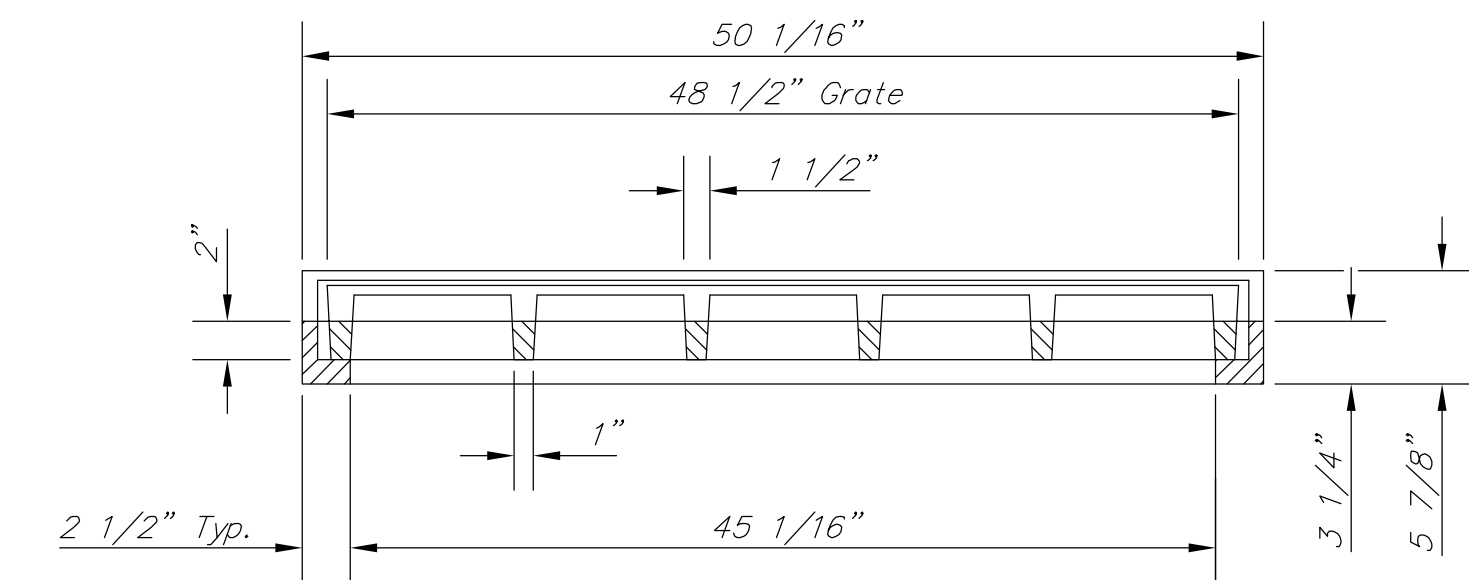
PLAN

GENERAL NOTES

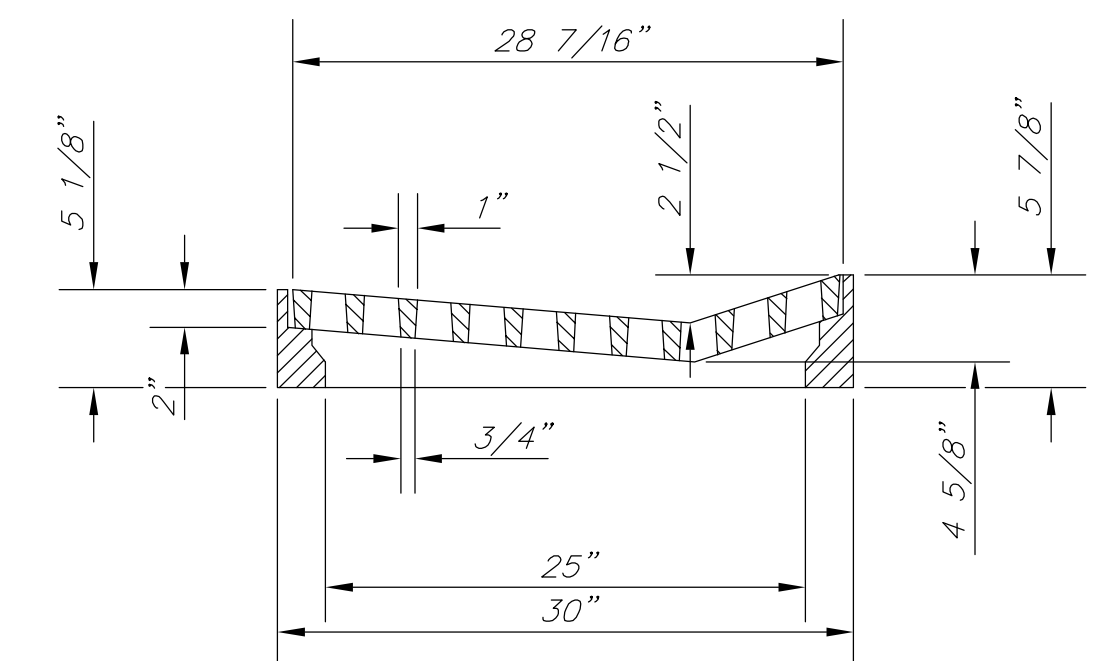
1. Grate frames to be installed on thin mortar cushion to insure full support along brick walls. Concrete used for inlet construction shall be concrete pavement mix.
2. Inlet invert shall be shaped with 8 sack sand mix concrete to create flow channels and to increase hydraulic efficiency such that the inlet will be self cleaning between all inlet and/or outlet pipes.
3. The ends of all pipes installed in inlets shall be cut off flush with the inside face of the inlet wall.
4. Inlet Frames and Grates to be two (2) Deeter #2095 or approved equal.



PLAN



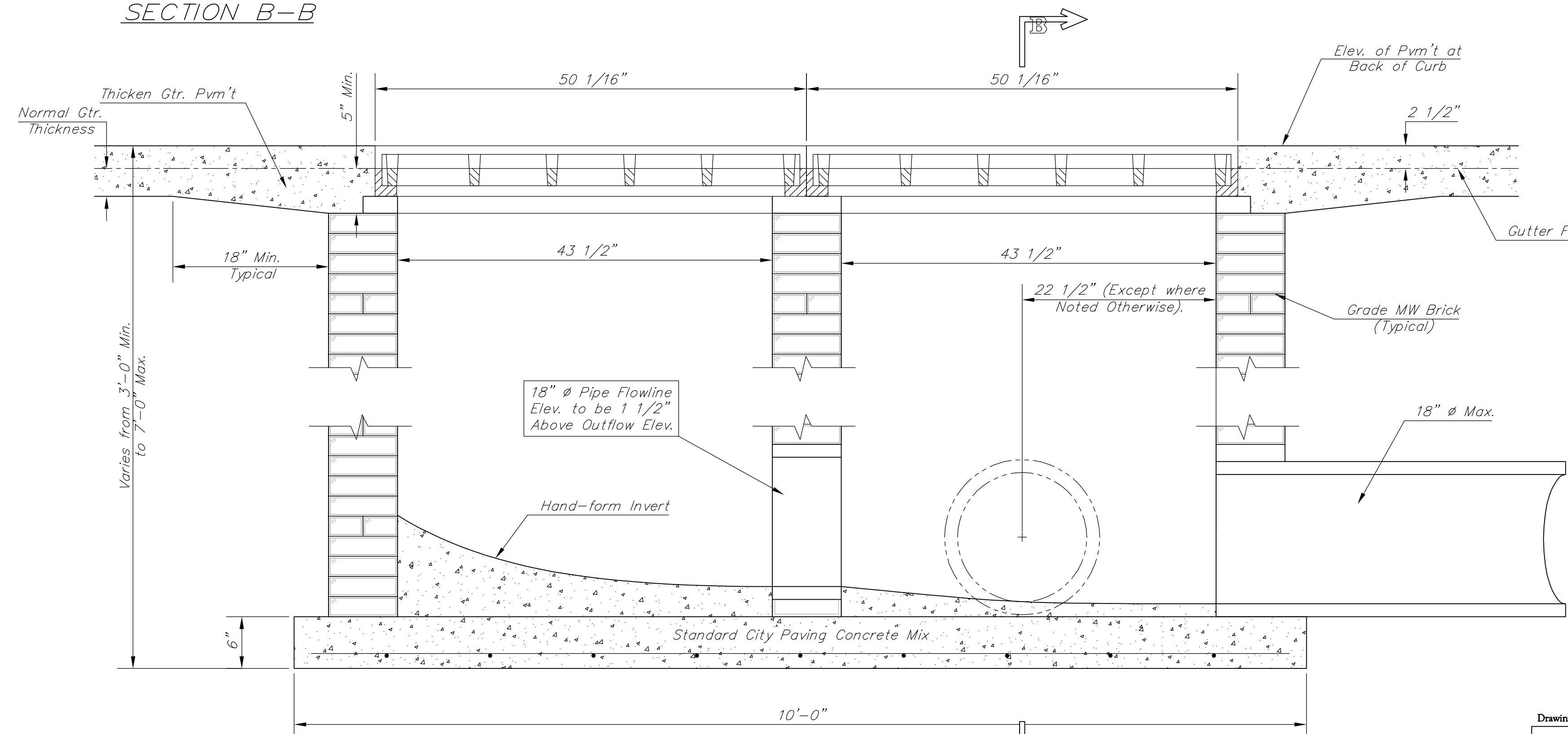
SECTION D-D



SECTION C-C

DEETER #2095 FRAME & GRATE

TOTAL WEIGHT: 705 lbs.
(2 Each Required)



SECTION A-A

Drawing File: E:\eng\Hydraulic\kellogg to Harry\Details\SH43 Double Drive Inlet Detail.dwg

Design: C.O.W.
Drawn: C.O.W.
Approved: KK
Scale: None

Project No. 0710E.968 CAPITAL IMPROVEMENT PROJECT

STANDARD DOUBLE DRIVE
INLET DETAILS
HYDRAULEC AVE. - KELLOGG TO HARRY STREET

Baughman Company, P.A.
315 Ellis St. Wichita, KS 67211 P 316-262-7271 F 316-262-0149
ENGINEERING | SURVEYING | PLANNING | LANDSCAPE ARCHITECTURE

September 2009

SHEET
OF
49
101