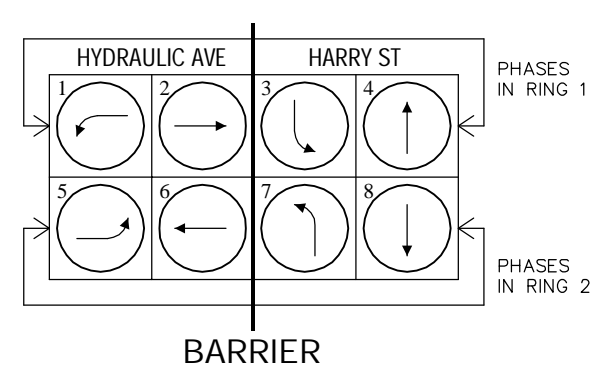
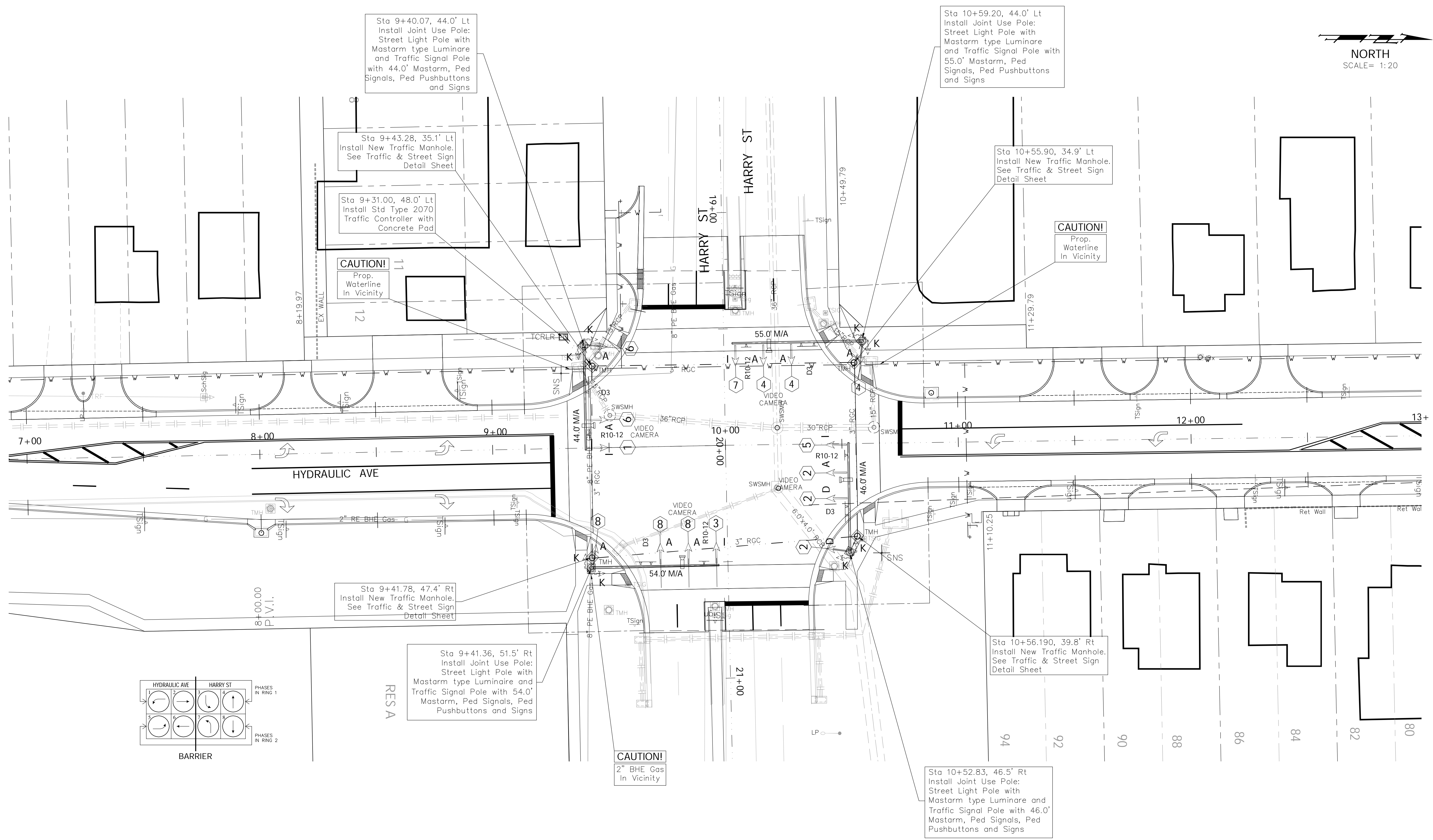


FHWA REGION NO.	STATE	PROJECT NO.	FISCAL YEAR	SHEET NO.	TOTAL SHEETS
7	KANSAS	87N-0503-01	2009	68	101

FEDERAL Project No. ARRA-N050(301)



Sta 9+40.07, 44.0' Lt
Install Joint Use Pole:
Street Light Pole with
Mastarm type Luminare
and Traffic Signal Pole
with 44.0' Mastarm, Ped
Signals, Ped Pushbuttons
and Signs

Sta 9+43.28, 35.1' Lt
Install New Traffic Manhole.
See Traffic & Street Sign
Detail Sheet

Sta 9+31.00, 48.0' Lt
Install Std Type 2070
Traffic Controller with
Concrete Pad

CAUTION!
Prop.
Waterline
In Vicinity

Sta 9+41.78, 47.4' Rt
Install New Traffic Manhole.
See Traffic & Street Sign
Detail Sheet

Sta 9+41.36, 51.5' Rt
Install Joint Use Pole:
Street Light Pole with
Mastarm type Luminare and
Traffic Signal Pole with 54.0'
Mastarm, Ped Signals, Ped
Pushbuttons and Signs

CAUTION!
2" BHE Gas
In Vicinity

Sta 10+59.20, 44.0' Lt
Install Joint Use Pole:
Street Light Pole with
Mastarm type Luminare
and Traffic Signal Pole with
55.0' Mastarm, Ped
Signals, Ped Pushbuttons
and Signs

Sta 10+55.90, 34.9' Lt
Install New Traffic Manhole.
See Traffic & Street Sign
Detail Sheet

CAUTION!
Prop.
Waterline
In Vicinity

Sta 10+56.190, 39.8' Rt
Install New Traffic Manhole.
See Traffic & Street Sign
Detail Sheet

Sta 10+52.83, 46.5' Rt
Install Joint Use Pole:
Street Light Pole with
Mastarm type Luminare and
Traffic Signal Pole with 46.0'
Mastarm, Ped Signals, Ped
Pushbuttons and Signs

Drawing File: E:\eng\Hydraulic Kellogg to Harry Pave\Land\dwg\ACAD\Bases (Marking & Signal).dwg

Design: TA
Drawn: STAFF
Approved: JFB
Scale: NOTED

Project No. 07-10-E-968 CAPITAL IMPROVEMENT PROJECT
SIGNALIZATION PLAN
HARRY ST. @ HYDRAULIC AVE.
HYDRAULIC PAVING IMPROVEMENTS - HARRY TO KELLOGG

Baughman Company, P.A.
315 Ellis St. Wichita, KS 67211 P 316-262-1271 F 316-262-0149
ENGINEERING | SURVEYING | PLANNING | LANDSCAPE ARCHITECTURE

September 2009
SHEET 68 OF 101