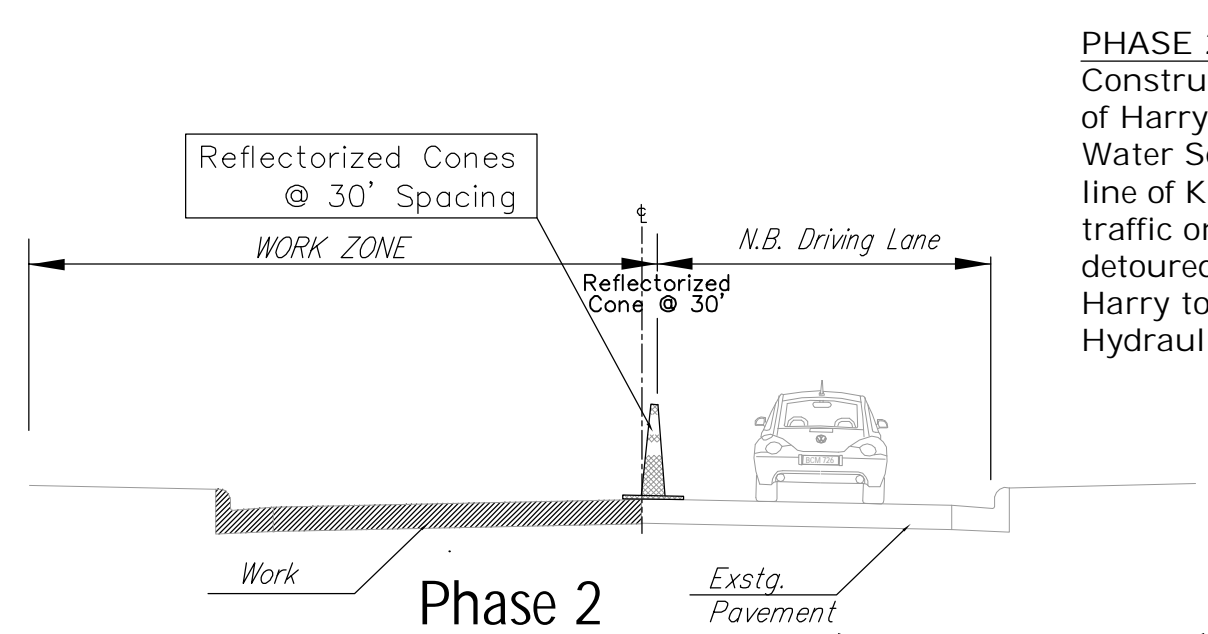
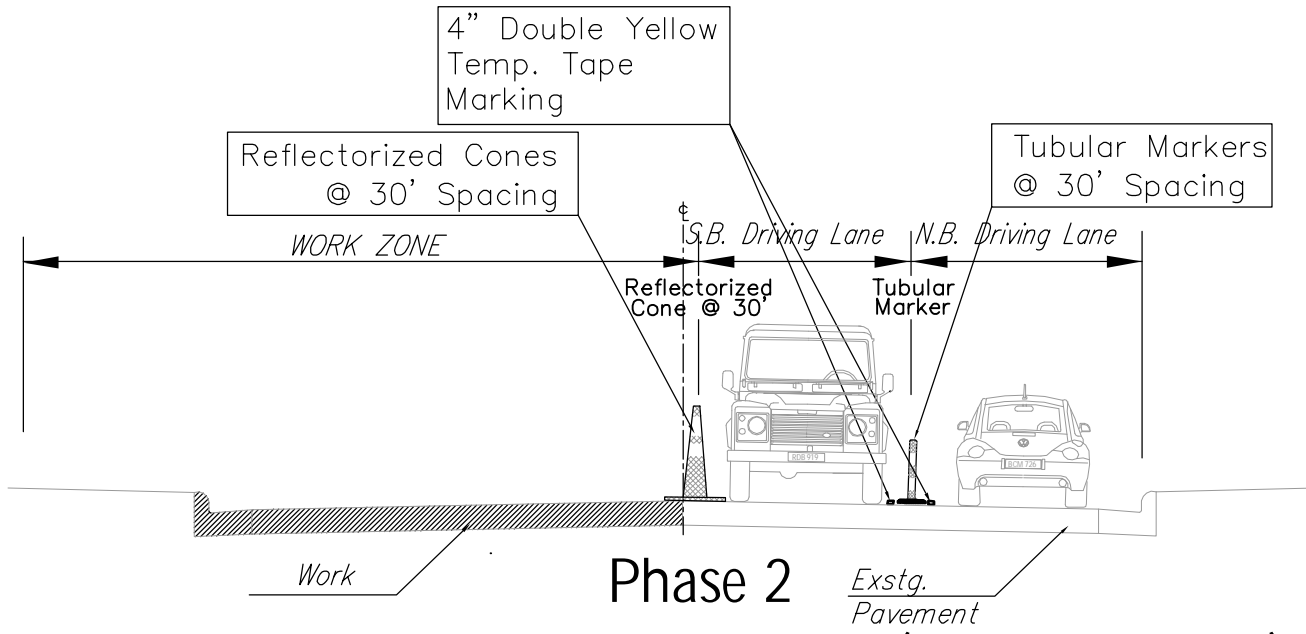


FHWA REGION NO.	STATE	PROJECT NO.	FISCAL YEAR	SHEET NO.	TOTAL SHEETS
7	KANSAS	87N-0503-01	2009	77	101

FEDERAL Project No. ARRA-N050(301)

PHASE 2:
Construct waterline on the west side of Hydraulic from south of Harry to the south line of Harry and from the centerline of Harry to the south line of Lincoln. Construct Storm Water Sewer on the west side of Hydraulic from the centerline of Lincoln to the south line of Kellogg Dr. Cut gap through median in Harry east of Hydraulic. North-bound traffic only on existing pavement east of the centerline of Hydraulic. South bound traffic detoured west on existing pavement east of the centerline of Hydraulic. Two-way traffic on existing pavement east of the centerline of Hydraulic south of Harry.



Temporary Traffic Signal System as Required

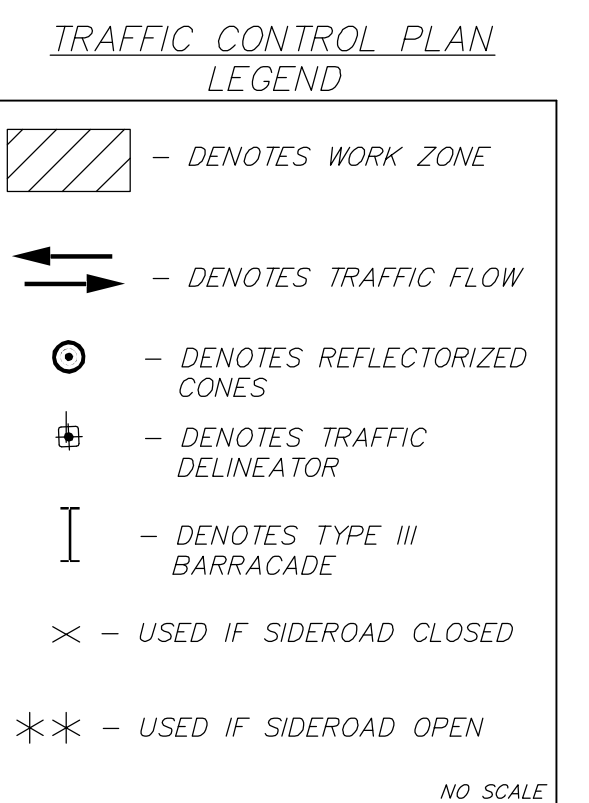
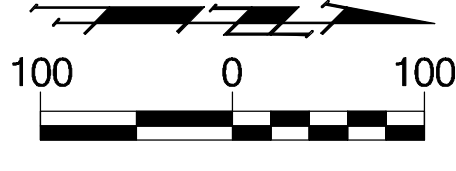
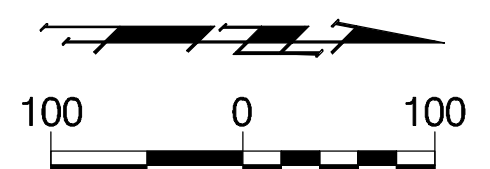
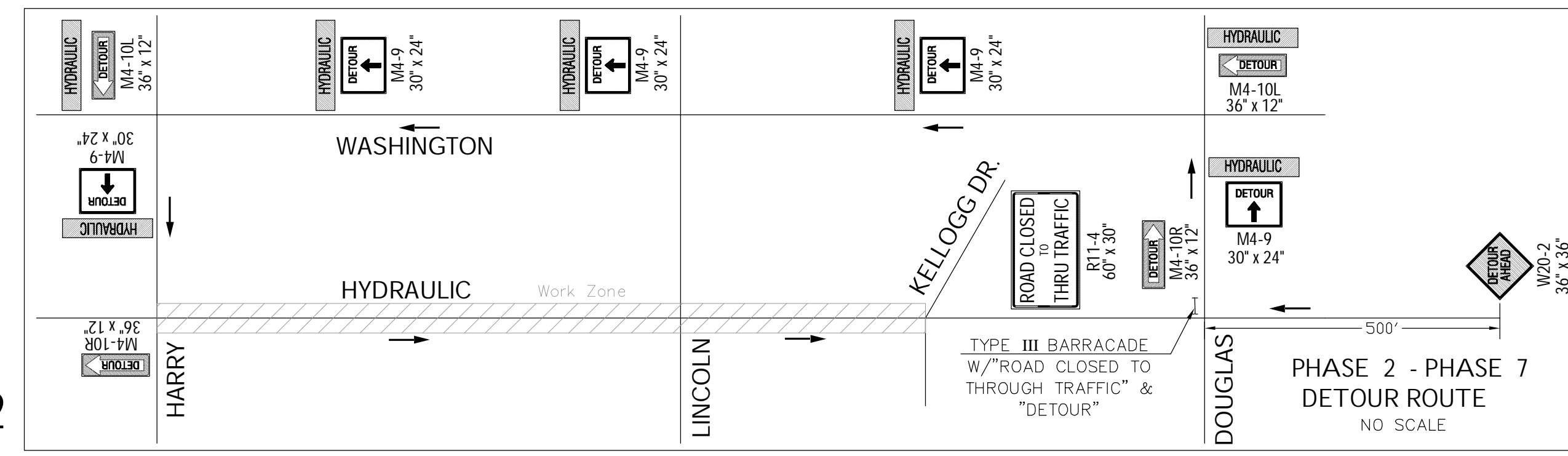
No Left Turn Signs for East & West Bound Traffic Overhead.

TWO-WAY TRAFFIC ON EXSTG. PAVEMENT EAST OF CENTERLINE

ARRA SIGN (See Sheet 82)

Remove 100' of Median. Install Temp. A.C. Pavement. Reconstruct Median When Project Complete. (See Detail Sheet 71)

NOTE: No More Than 2 Side Streets Closed at the Same Time.



Drawing File: E:\eng\Hydraulic\Kellogg to Harry\Const. Traffic Control.dwg
 Design: KK
 Drawn: JDM
 Approved: JFB
 Scale: 1:100

Project No. 0710E968 CAPITAL IMPROVEMENT PROJECT
CONSTRUCTION TRAFFIC CONTROL
CONSTRUCTION SEQUENCE PHASE 2
 HYDRAULIC AVENUE PAVING - KELLOGG TO HARRY

Baughman Company, P.A.
 315 Ellis St. Wichita, KS 67211 P 316-262-7271 F 316-262-0149
 ENGINEERING | SURVEYING | PLANNING | LANDSCAPE ARCHITECTURE

September 2009
 SHEET
77
 OF
101