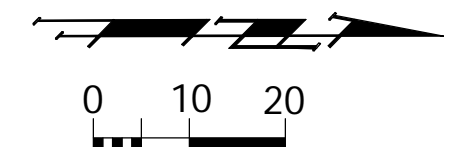


W.L. Sta. 48+97.21 Line 1 =
B.L. 1 Sta. 55+50.00, 33.00' Lt. =
Match Point.

B.L. 1 57+85.17,
Thimble @ Intersection of
Hydraulic & Orme

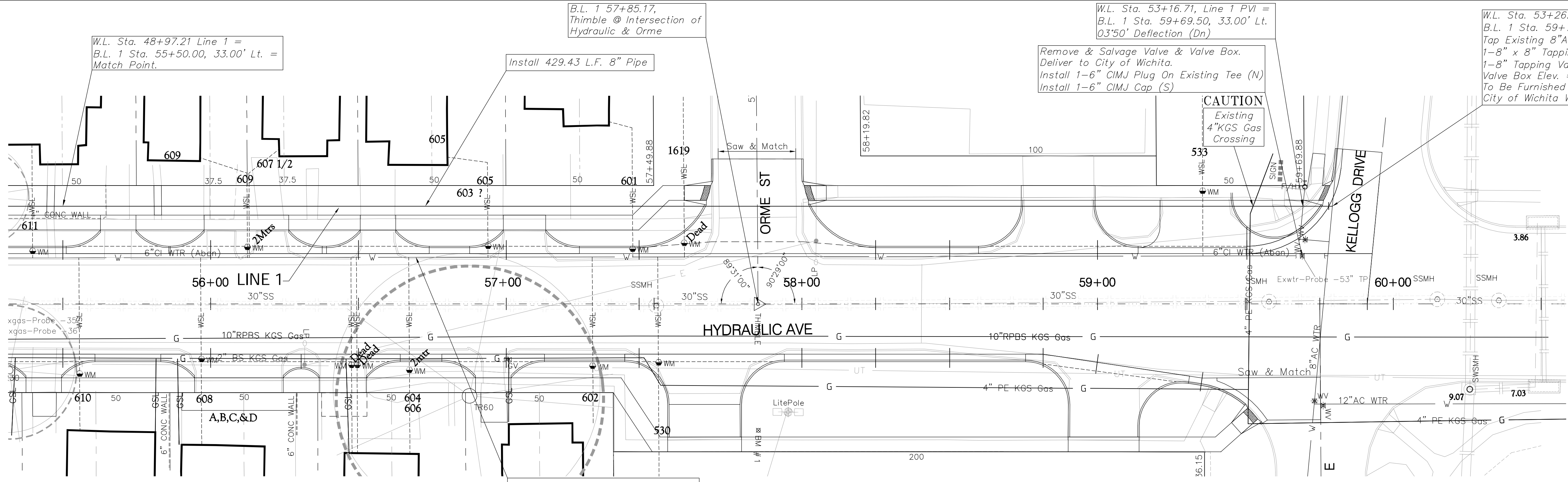
W.L. Sta. 53+16.71, Line 1 PVI =
B.L. 1 Sta. 59+69.50, 33.00' Lt.
0.3'50' Deflection (Dn)

W.L. Sta. 53+26.64, End Line 1 =
B.L. 1 Sta. 59+79.43, 33.00' Lt.
Top Existing 8" AC Water Line
1-8" x 8" Tapping Sleeve
1-8" Tapping Valve w/Valve Box
Valve Box Elev. = 1293.01 Top
To Be Furnished & Installed By
City of Wichita Water Dept.



SCALE:
1" = 20' Horizontal
1" = 5' Vertical

Note:
See Water Meter
Table For Service
Locations.

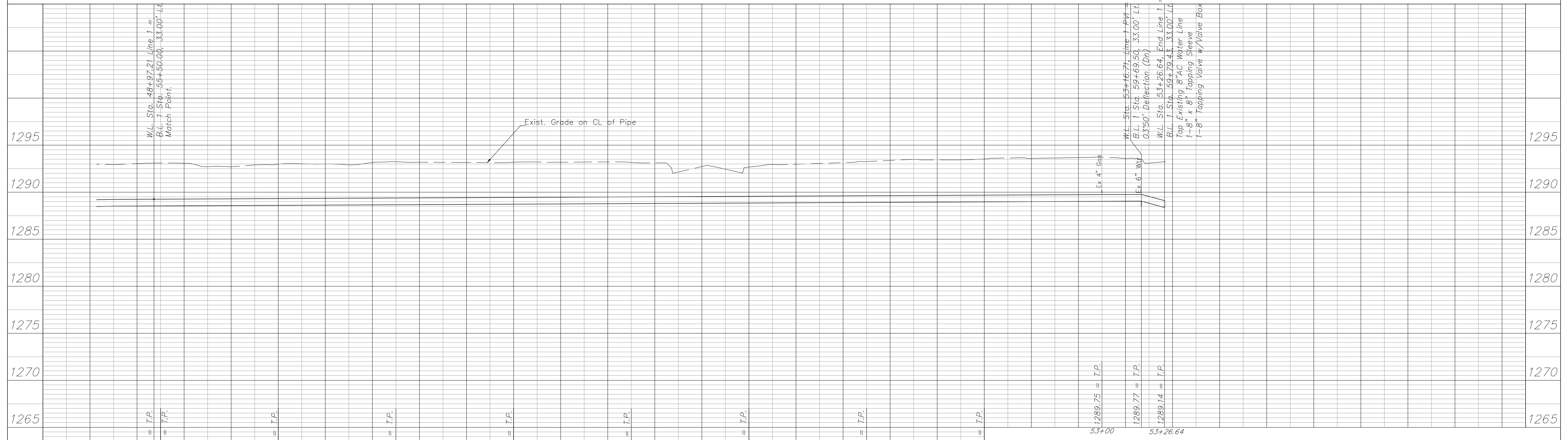


Note:
8" Waterline to be Installed with
Trenchless methods from W.L.
Sta 46+33.75 to Sta 51+00.00.

Abandon Existing 6" Water Line in
Place in Accordance with City of
Wichita Specs. Seal Both Ends.
All Services Must Be Connected To
New Main Prior to Abandonment.

Benchmark

BM#1 - C.O.W. Disk - E. Side of Hydraulic CL of Orme W.
Elev. 1293.46' NAVD 88
BM#2 - "□" Top of Curb N. Side Orme, E. End Return, E. Side Alley, W. of Hydraulic.
Elev. 1291.43' NAVD 88



Design: TCA
Drawn: TCA
Approved: JFB
Scale: 1:20

Project No. 07-10E969 CAPITAL IMPROVEMENT PROJECT
HYDRAULIC AVENUE
Line 1, W.L. Sta. 48+97.21 to W.L. Sta 53+26.64
SOUTH OF HARRY TO KELLOGG DRIVE

Baughman Company, P.A.
315 Ellis St. Wichita, KS 67211 P 316-262-7271 F 316-262-0149
ENGINEERING | SURVEYING | PLANNING | LANDSCAPE ARCHITECTURE