

Water Service Replacements

Address	B.L. Sta.	Ex. Offset	New Offset	Status	Remarks	Meter No.
1625 S. Hydraulic	6+80.04	24.96' Lt.		Short		
1621 S. Hydraulic	7+36.02	22.99' Lt.		Short		
1615 S. Hydraulic	7+87.42	24.19 Lt.		Short		
1601 S. Hydraulic	8+35.85	33.88' Lt.		Short		
1557 S. Hydraulic	11+09.69	54.01' Lt.		Short	Wtr Vlt	
1552 S. Hydraulic	11+35.31	19.36' Rt.		Long		
1544 S. Hydraulic	11+87.68	17.54 Rt.		Long	Buried	
1545 S. Hydraulic	12+00.00	19.09 Lt.		Short		
1540 S. Hydraulic	12+54.97	18.72 Rt.		Long		
1537 S. Hydraulic	12+70.55	23.47 Lt.		Short		
1536 S. Hydraulic	12+96.20	20.67' Rt.		Long	Duplex w/1534 Buried	
1534 S. Hydraulic	12+96.20	20.67' Rt.		Long	Duplex w/1536 1 Meter In 1 Box	
1535 S. Hydraulic	12+97.77	23.89' Lt.		Short		
1530 S. Hydraulic	13+50.52	17.75' Rt.		Long		
1527 S. Hydraulic	13+68.53	18.90' Lt.		Short		
1526 S. Hydraulic	13+99.79	18.84 Rt.		Long	Duplex w/1524 1 Dead set	
1524 S. Hydraulic	14+00.76	19.39' Rt.		Long	Duplex w/1526 1 Meter In 1 Box	
1517 S. Hydraulic	14+18.48	22.20' Lt.		Short		
1515 S. Hydraulic	14+33.24	21.73' Lt.		Short		
1514 S. Hydraulic	14+50.55	19.63' Rt.		Long		
1512 S. Hydraulic	14+79.50	22.59' Rt.		Long		
1512 1/2 S. Hydraulic	14+81.06	16.37' Rt.		Long	Dead	
1511 S. Hydraulic	15+00.58	20.07' Lt.		Short		
1509 S. Hydraulic	15+18.38	19.58' Lt.		Short		
1510 S. Hydraulic	15+55.91	17.70' Rt.		Long		
1504 S. Hydraulic	15+72.43	17.87' Rt.		Long		
1507 S. Hydraulic	15+78.15	18.27' Lt.		Short		
1501 S. Hydraulic	16+13.89	21.09 Lt.		Short		
1502 S. Hydraulic	16+29.28	20.34' Rt.		Long		
1446 S. Hydraulic	17+02.42	16.21' Rt.		Long		
1444 S. Hydraulic	17+25.96	18.31' Rt.		Long		
1453 S. Hydraulic	17+30.71	21.88' Lt.		Short		
1449 S. Hydraulic	17+59.93	30.00' Lt.		Short	Duplex w/1551 Gone	
1451 S. Hydraulic	17+62.60	20.56' Lt.		Short	Duplex w/1549	
1440 S. Hydraulic	18+03.75	18.21' Rt.		Long		
1436 S. Hydraulic	18+24.12	18.61' Rt.		Long		
1445 S. Hydraulic	18+59.85	20.57' Lt.		Short	2 Meter In 1 Box	
1443 S. Hydraulic	18+59.85	20.57' Lt.		Short	2 Meter In 1 Box	
1432 S. Hydraulic	18+85.31	19.49' Rt.		Long		
1439 S. Hydraulic	18+89.06	20.62' Lt.		Short		
1428 S. Hydraulic	19+16.30	17.47' Rt.		Long		
1435 S. Hydraulic	19+50.78	20.16' Lt.		Short		
1429 S. Hydraulic	20+22.61	22.83' Lt.		Short		
1423 S. Hydraulic	20+45.36	21.76' Lt.		Short		
1421 S. Hydraulic	20+85.87	20.08' Lt.		Short		
1415 S. Hydraulic	21+20.56	19.25' Lt.		Short		
1409 S. Hydraulic	21+90.76	23.69' Rt.		Short		
1410 S. Hydraulic	22+03.18	18.99' Rt.		Long		
1405 S. Hydraulic	22+15.65	22.81' Lt.		Short	Duplex w/1405 2 Meter In 1 Box	
1405 S. Hydraulic	22+15.65	22.81' Lt.		Short	Duplex w/1405 2 Meter In 1 Box	
1403 S. Hydraulic	22+19.51	23.32' Lt.		Short	Duplex w/1401 2 Meter In 1 Box	
1401 S. Hydraulic	22+19.51	23.32' Lt.		Short	Duplex w/1403 2 Meter In 1 Box	

Water Service Replacements

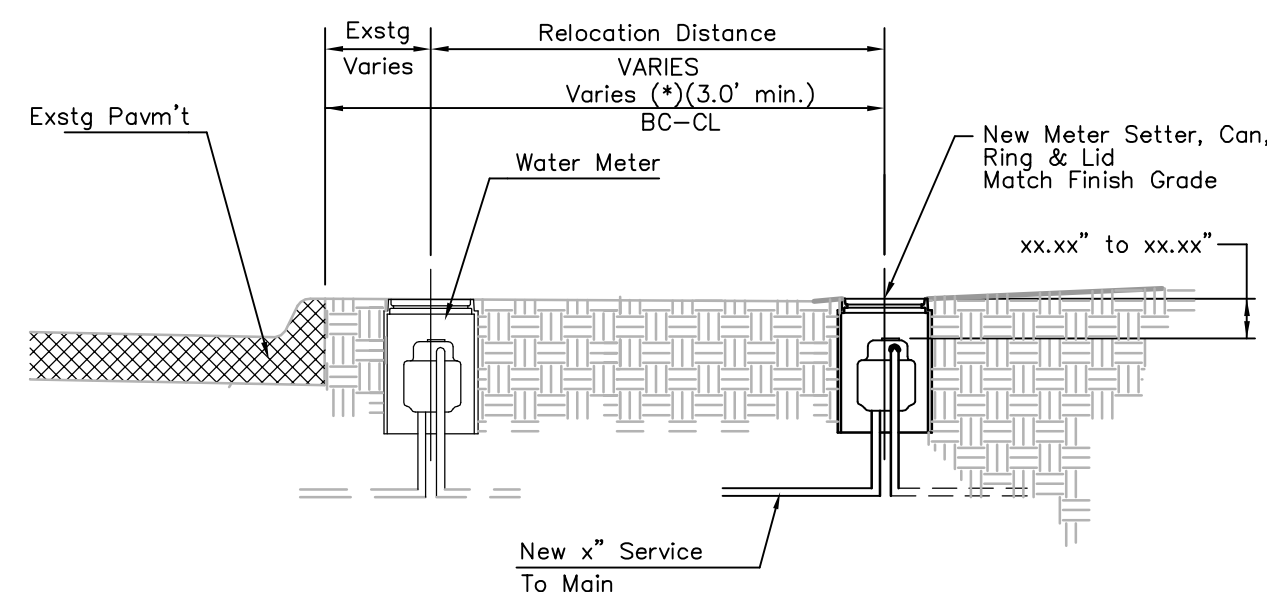
Address	B.L. Sta.	Ex. Offset	New Offset	Status	Remarks	Meter No.
1402 S. Hydraulic	22+77.86	17.27' Rt.		Long		
1362 S. Hydraulic	23+19.32	19.39' Rt.		Long		
1356 S. Hydraulic	23+88.71	18.52' Rt.		Long	Duplex w/1354	
1357 S. Hydraulic	24+03.30	20.43' Lt.		Long		
1354 S. Hydraulic	24+06.38	18.18' Rt.		Short	Duplex w/1356	
1351 S. Hydraulic	24+10.42	20.25' Lt.		Short		
1352 S. Hydraulic	24+55.92	18.38' Rt.		Short		
1350 S. Hydraulic	24+93.48	20.46' Rt.		Long	Dead	
1345 S. Hydraulic	25+21.61	21.36' Lt.		Short		
1348 S. Hydraulic	25+47.65	23.09' Rt.		Long		
1327 S. Hydraulic	25+49.57	30.70' Lt.		Short		
1346 S. Hydraulic	25+84.73	21.10' Rt.		Long		
1332 S. Hydraulic	26+32.94	17.12' Rt.		Long		
1325 S. Hydraulic	26+39.53	21.85' Lt.		Short		
1321 S. Hydraulic	26+90.57	18.89' Lt.		Short		
1326 S. Hydraulic	26+95.22	16.79' Rt.		Long		
1319 S. Hydraulic	27+26.31	19.63' Lt.		Short		
1322 S. Hydraulic	27+55.67	17.29' Rt.		Long		
1315 S. Hydraulic	27+73.16	19.65' Lt.		Short		
1318 S. Hydraulic	28+04.02	17.98' Rt.		Long		
1311 1/2 S. Hydraulic	28+22.60	27.39' Lt.		Short		
1311 S. Hydraulic	28+23.96	20.23' Lt.		Short		
1312 S. Hydraulic	28+44.97	18.31' Rt.		Long		
1309 S. Hydraulic	28+77.58	20.82' Lt.		Short	Duplex w/1307 2 Meter In 1 Box	
1307 S. Hydraulic	28+78.64	20.57' Lt.		Short	Duplex w/1309 2 Meter In 1 Box	
1304 S. Hydraulic	28+92.37	16.44' Rt.		Long		
1303 S. Hydraulic	29+14.84	19.50' Lt.		Short		
1617 E. Bayley	29+16.75	19.74' Lt.		Short	Full of Dirt	
1302 S. Hydraulic	29+43.22	16.84' Rt.		Long		
1256 S. Hydraulic	30+34.04	19.45' Rt.		Long		
1257 S. Hydraulic	30+63.47	18.80' Lt.		Short		
1252 S. Hydraulic	31+10.15	19.36' Rt.		Long		
1248 S. Hydraulic	31+30.53	17.63' Rt.		Long		
1239 S. Hydraulic	31+61.51	20.05' Lt.		Short		
1235 S. Hydraulic	31+80.12	25.06' Lt.		Short		
1242 S. Hydraulic	31+97.83	17.81' Rt.		Long		
1227 S. Hydraulic	32+47.82	21.03' Lt.		Short		
1238 S. Hydraulic	32+49.04	22.51' Rt.		Long		
1230 S. Hydraulic	33+08.07	20.88' Rt.		Long		
1228 S. Hydraulic	33+43.59	18.52' Rt.		Long		
1226 S. Hydraulic	34+09.80	17.62' Rt.		Long		
1214 S. Hydraulic	34+49.03	17.71' Rt.		Long		
1212 S. Hydraulic	34+82.51	19.25' Rt.		Long		
1210 S. Hydraulic	35+14.44	17.42' Rt.		Long		
1204 S. Hydraulic	35+50.99	24.06' Rt.		Long		
1138 S. Hydraulic	38+00.70	23.03' Rt.		Long		
1134 S. Hydraulic	38+50.52	16.09' Rt.		Long		
1610 E. Lincoln	38+55.60	23.15' Lt.		Short		
1610 E. Lincoln	38+57.97	23.23' Lt.		Short	ICV	
1130 S. Hydraulic	39+03.05	18.82' Rt.		Long		
1135 S. Hydraulic	39+16.16	19.65' Lt.		Short	Dead	
1126 S. Hydraulic	39+72.09	19.60' Rt.		Long		

Water Service Replacements

Address	B.L. Sta.	Ex. Offset	New Offset	Status	Remarks	Meter No.
1131 S. Hydraulic	39+86.30	21.79' Lt.		Short	Dead	
1121 S. Hydraulic	40+21.93	20.32' Lt.		Short		
1122 S. Hydraulic	40+28.14	18.26' Rt.		Long		
1118 S. Hydraulic	40+56.03	21.46' Rt.		Long		
1117 S. Hydraulic	40+69.48	19.90' Lt.		Short		
1113 S. Hydraulic	41+05.66	18.46' Lt.		Short		
1106 S. Hydraulic	41+50.78	26.73' Rt.		Short		
1109 S. Hydraulic	41+54.28	18.78' Lt.		Short		
1619 E. Morris	41+74.36	18.87' Lt.		Short		
1624 E. Morris	42+66.20	19.29' Lt.		Short		
1023 S. Hydraulic	43+35.44	18.35' Lt.		Short		
1021 S. Hydraulic	43+72.95	20.09' Lt.		Short		
1702 E. Morris	43+77.02	21.83' Rt.		Long	Gone	
1710 E. Morris	43+82.74	21.75' Rt.		Long		
1708 E. Morris	43+84.37	21.84' Rt.		Long	Duplex w/1706 2 Meter In 1 Box	
1706 E. Morris	43+85.97	21.89' Rt.		Long	Duplex w/1708 2 Meter In 1 Box	
1704 E. Morris	43+89.41	21.78' Rt.		Long		
1712 E. Morris	43+95.08	21.81' Rt.		Long	Gone	
1017 S. Hydraulic	44+22.41	18.69' Lt.		Short	Buried	
1720 S. Morris	44+57.20	22.56' Rt.		Long		
1013 S. Hydraulic	44+75.12	21.27' Lt.		Short		
1003 S. Hydraulic	45+66.12	20.54' Lt.		Short		
741 S. Hydraulic	47+87.71	20.99' Lt.		Short		
727 S. Hydraulic	49+59.21	18.84' Lt.		Short		
714 S. Hydraulic	50+22.86	18.89' Rt.		Long	Dead	
715 S. Hydraulic	50+65.28	17.09' Lt.		Short		
711 S. Hydraulic	50+96.32	18.65' Lt.		Short		
707 S. Hydraulic	51+50.37	19.83' Lt.		Short	Shared with 703 S. Hydraulic	
701 S. Hydraulic	51+96.73	19.87' Lt.		Short	Shared with 701 1/2 S. Hydraulic	
643 S. Hydraulic	53+29.15	20.68' Lt.		Short	1610 Indianapolis 2 Meter In 1 Box	
1610 Indianapolis	53+29.15	20.68' Lt.		Short	643 S. Hydraulic 2 Meter In 1 Box	
642 S. Hydraulic	53+29.62	19.94' Rt.		Long	Shared with 646 & 648	
641 S. Hydraulic	53+44.83	18.84' Lt.		Short		
632 S. Hydraulic	54+12.62	19.11' Rt.		Long	Shared with 636 & 638	
637 S. Hydraulic	54+15.62	19.90' Lt.		Short		
633 S. Hydraulic	54+38.88	20.58' Lt.		Short		
614 S. Hydraulic	54+59.36	19.54' Rt.		Long		
612 S. Hydraulic	55+08.82	19.56' Rt.		Long		
623 S. Hydraulic	55+19.07	17.73' Lt.		Short	Shared with 625 & 627	
611 S. Hydraulic	55+39.79	17.90' Lt.		Short	Shared with 613.1 & 613.2	
610 S. Hydraulic	55+55.70	23.57' Rt.		Long		
608 S. Hydraulic	55+96.92	18.62' Rt.		Long	A, B, C, & D	
609 S. Hydraulic	56+12.43	19.25' Lt.		Short		
607 S. Hydraulic	56+12.94	19.87' Lt.		Short	Shared with 607 1/2 S. Hydraulic	
604b S. Hydraulic	56+47.65	20.62' Rt.		Long	Dead	
604a S. Hydraulic	56+49.58	20.62' Rt.		Long	Dead	
604 S. Hydraulic	56+67.21	22.32' Rt.		Long	606 S. Hydraulic 2 Meter In 1 Box	
605 S. Hydraulic	56+93.87	19.64' Lt.		Short	Shared with 603 S. Hydraulic	
602 S. Hydraulic	57+29.19	20.93' Rt.		Long		
601 S. Hydraulic	57+42.71	18.62' Lt.		Short		
530 S. Hydraulic	57+51.54	19.76' Rt.		Long		
1619 E. Orme	57+60.17	20.59' Lt.		Short	Dead	
533 S. Hydraulic	59+35.54	38.21' Lt.		Short		

Summary of Water Quantities

MEASURED QUANTITY BID ITEMS - WATERLINE		
2" Water Pipe	18	L.F.
6" Water Pipe	33	L.F.
8" Water Pipe	5,580	L.F.
6" DICL Water Pipe	27	L.F.
8" DICL Water Pipe	188	L.F.
6" Valve Assy (Gate Valve)	3	EA.
6" Anchored Valve Assy (Gate Valve)	1	EA.
8" Valve Assy (Gate Valve)	10	EA.
8" Anchored Valve Assy (Gate Valve)	6	EA.
2" Service Outlet Assy	2	EA.
Fire Hydrant Assy	7	EA.
Fire Hydrants Removal	7	EA.
2" Blow-Off Assy	5	EA.
Sand Fill, Flush & Vibrate	680	L.F.
Conc. Sanitary Sewer Encasement	20	L.F.
Temporary Asphalt Pavement (5")	762	S.Y.
Remove Existing Water Valves	2	EA.
Abandon Existing Water Valves	19	EA.
Relocate & Re-install Water Services (Short)	84	EA.
Relocate & Reinstall Water Services (Long)	72	EA.



(*) Relocation of all water meters in conflict with construction of this project will be accomplished in conjunction with construction. Location of meter(s) will be typically set at least xx ft. from the back of new curbline to the centerline of meter box unless otherwise as directed by the Field Engineer.

The top of the meter box to be field set typically to match finish grade elevations unless otherwise as directed by the Field Engineer.

Replace meter setter, can, ring & lid. All work and materials required is to be INCIDENTAL to the quantity item "Relocate & Re-install Water Service (EA.)"

Typical Water Meter Installation Detail

Drawing File: E:\Eng\Hydraulic Kellogg to Harry Pave\Water Details\Water Meter Tables.dwg

Design: TCA
Drawn: TCA
Approved: JFB
Scale: NOTED

Project No. 07-10E969 CAPITAL IMPROVEMENT PROJECT

WATER MAIN REPLACEMENT
WATER SERVICETABLES
HYDRAULIC - KELLOGG TO HARRY

Baughman Company, P.A.
315 Ellis St. Wichita, KS 67211 P 316-262-7271 F 316-262-0149
ENGINEERING | SURVEYING | PLANNING | LANDSCAPE ARCHITECTURE

September 2009

SHEET 18 OF 18