

**STORM SEWER IMPROVEMENTS  
TO SERVE  
NEUROLOGY CONSULTANTS OF KANSAS**

A portion of Lot 4, Block 1, The Collective  
(SE Corner of 21st St. N. and K-96)

Private Project No. 2004 PPS 607861

**City of Wichita**  
Sedgwick County, Kansas  
JAMES L. ARMOUR, PE, CITY ENGINEER

**INDEX OF SHEETS:**

- 15" STORM SEWER PLAN / PROFILE ..... C-2A
- SITE PLAN & GENERAL NOTES ..... C-1
- STORMWATER SEWER INLET DETAILS - TYPE 1A (SINGLE) ..... C-5
- 2'x2'/2'x4' DROP INLET DETAILS ..... C-6
- EROSION CONTROL PLAN ..... C-7

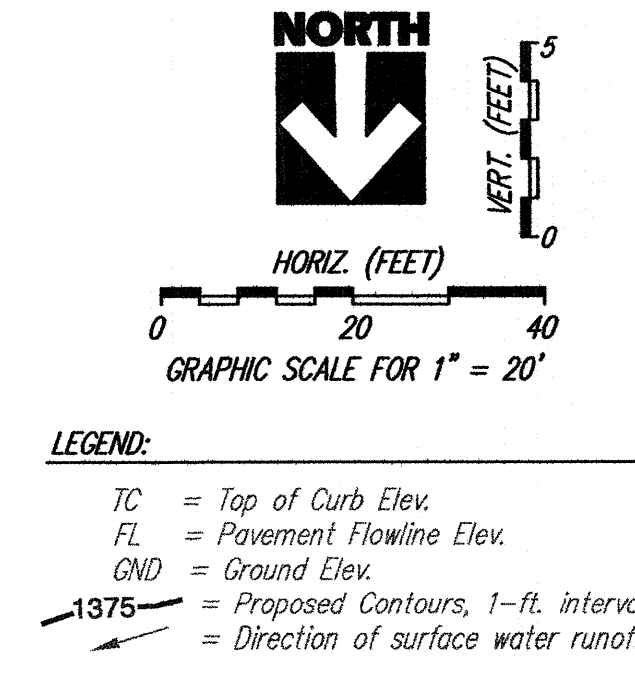


WDM Architects P.A.  
105 North Washington  
Wichita, KS 67202-2815  
T 316.262.4700  
F 316.262.0002  
wdmarchitects.com

we do more

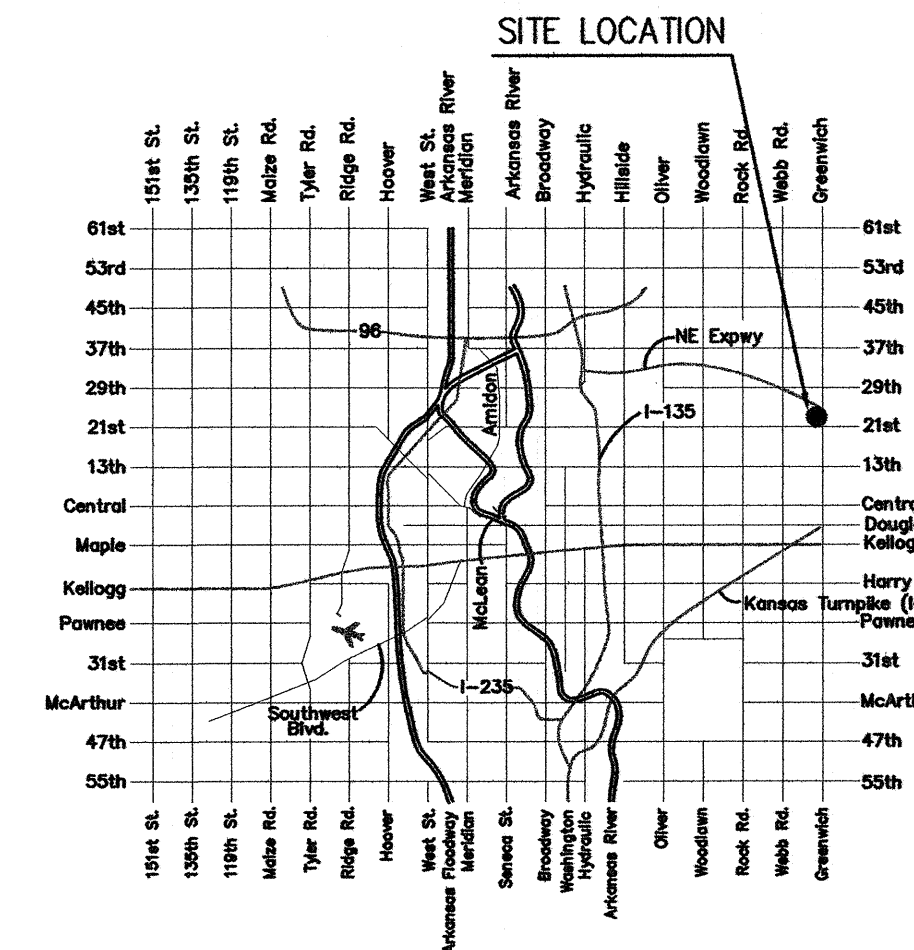
Neurology Consultants of Kansas

Wichita, Kansas



**As Built Plans:**  
CONTRACTOR: Mie's  
INSPECTOR: Larry Gann, K E Miller Engineering  
.PDF by: L.G.G. 12/08/2009

**VICINITY MAP:**



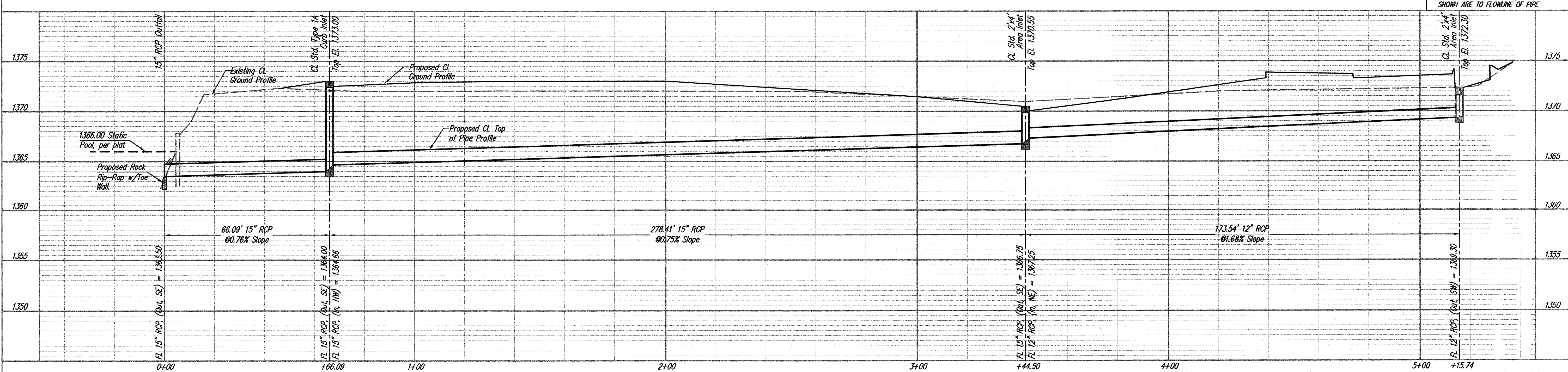
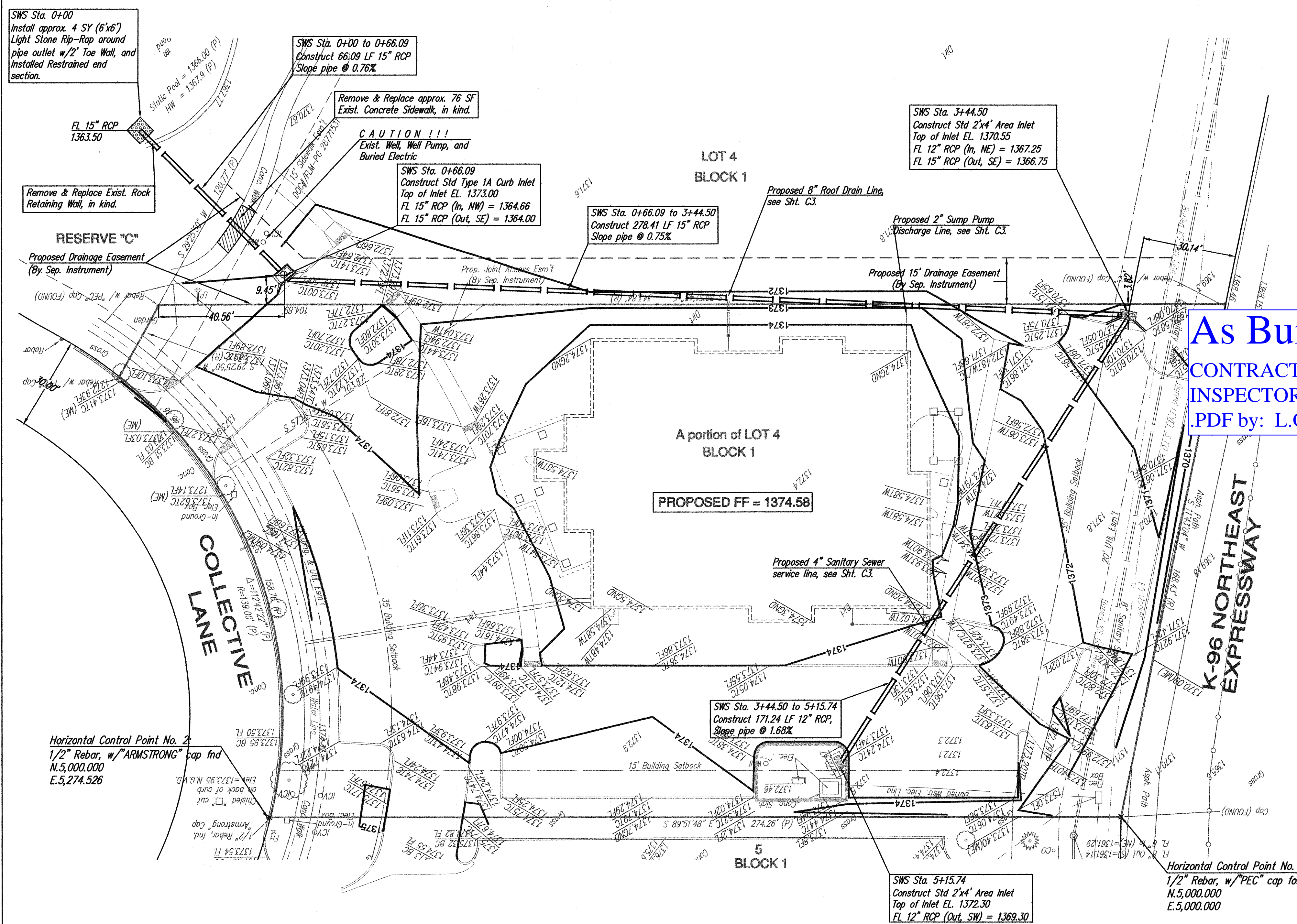
**YOUNG & ASSOCIATES, P.A.**  
Professional Civil Engineering Consultants  
100 South Georgia, Derby, Kansas 67037  
tel: (316)788-2552, fax: (316)788-4408, email: youngpa@netmain.com

APPROVED AS NOTED  
BY CITY ENGINEER OF WICHITA,  
BY WICHITA WATER & SEWER DEPARTMENT

Public Works *Julianne Kellman* 10-26-09  
Water & Sewer

NOTE TO CONTRACTORS  
Public Property:  
Inspection and testing for the storm sewer is to be provided by a Licensed Consulting Engineering Firm under contract with the Owner/Developer. Said inspection to be in accordance with the City of Wichita standard construction engineering practices and certified by a Professional Engineer Licensed in the state of Kansas. No work shall be performed in dedicated easements or public right-of-way by the Contractor without such inspection nor shall any work be commenced without written authorization by the City Engineer. All Construction and Materials shall comply with the City or Wichita Specifications and Standards (on file and available in the City Engineer's Office).

CITY OF WICHITA PRIVATE PROJECT NO.: \_\_\_\_\_  
PPS \_\_\_\_\_



PRINTS ISSUED  
08/08/09 - Concept Review  
08/29/09 - Preliminary Review  
07/13/09 - GMP Pricing  
08/14/09 - Permit submittal  
10/12/09 - For Construction

WDM No. 08135  
drawn: CRY  
checked: CRY

STORM SEWER PLAN & PROFILE

**C2A**