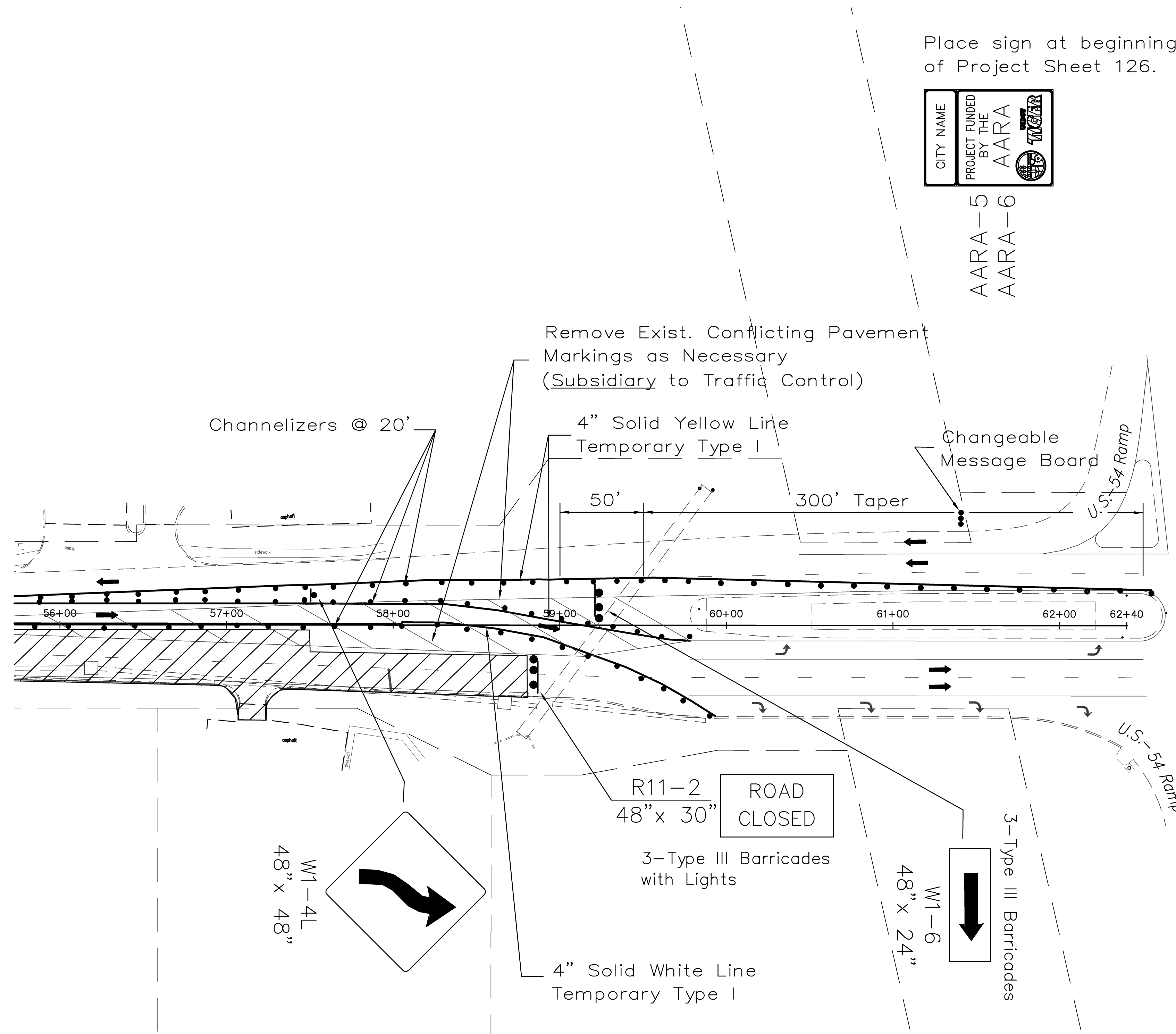
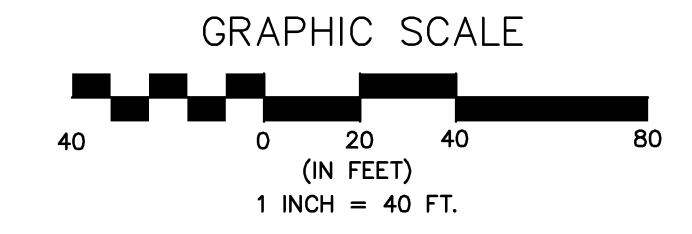
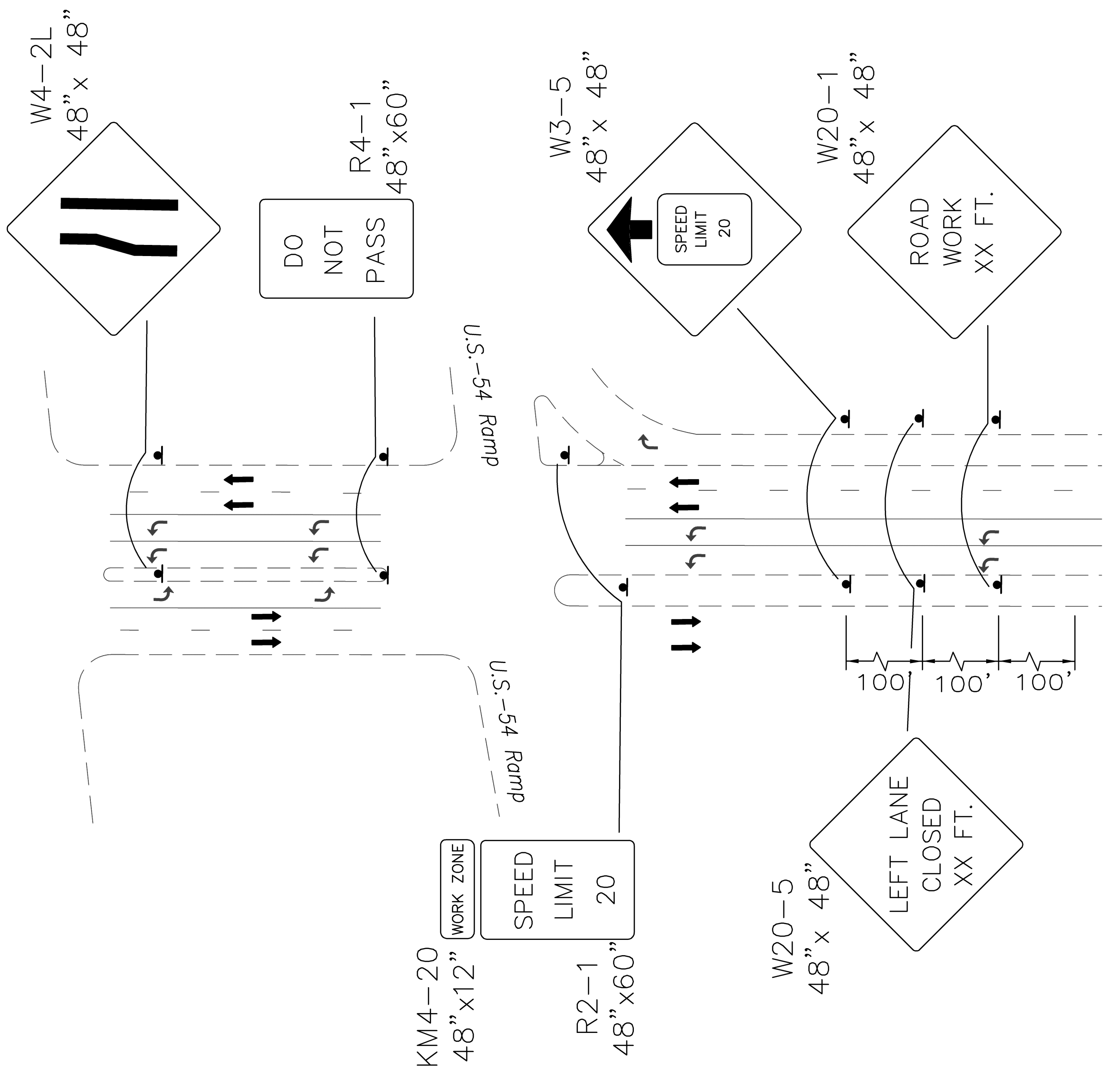


FHWA REG. NO.	STATE	PROJECT NO.:	YEAR	SHEET NUMBER	TOTAL SHEETS
7	KANSAS	87 N-0502-01	2008	109	226
A.R.R.A-N050(201)					

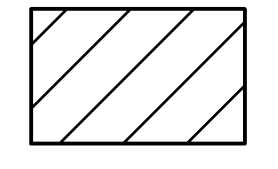


Place sign at beginning of Project Sheet 126.

CITY NAME
PROJECT FUNDED BY THE
AARA
AARA-5
AARA-6



LEGEND



Workzone



Channelizing Device

See Sheet 101 & TE742 For Advance Signing

PHASE II

No.	Date	By	Approved	Revision
<p>MAIZE ROAD WEST KELLOGG AVE. TO PANNEE AVE. CITY OF WICHITA, KANSAS PHASE II - TRAFFIC CONTROL</p>				
<p>POE & ASSOCIATES, INC. CONSULTING ENGINEERS 5940 E. Central, Suite 200 • Wichita, KS 67208-8242 Phone 316/685-4114 • FAX 316/685-4444</p>				
<p>FINAL</p>				
<p>Engineer: M. THOMPSON Designer: P. FERGUSON KDOT Job No.: 87 N-0502-01 Poe Job No.: 1935 Date: SEPT 2008</p>				
Sheet 109				of 226