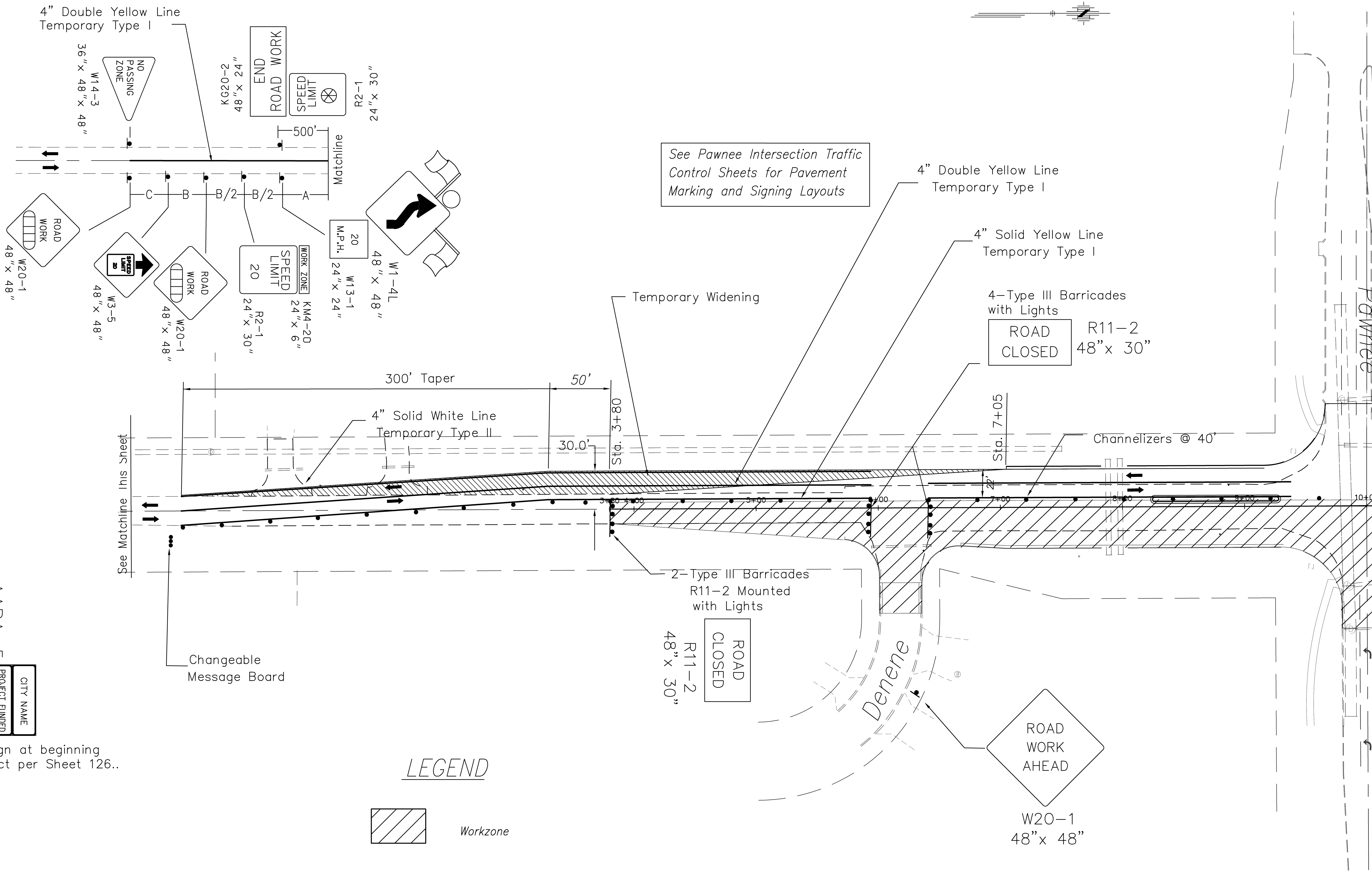


| FHWA REQ. NO. | STATE | PROJECT NO.: | YEAR | SHEET NUMBER | TOTAL SHEETS |
|---------------------|--------|--------------|------|-----------------|-----------------|
| 7 | KANSAS | 87 N-0502-01 | 2009 | 110 | 226 |
| A.R.R.A-N050(201) | | | | | |



See Pawnee Intersection Traffic Control Sheets for Pavement Marking and Signing Layouts

AARA-5
 AARA-6
 PROJECT FUNDED BY THE AARA

Place sign at beginning of Project per Sheet 126..

LEGEND

- Workzone
- Channelizing Device

PHASE III

| | | | | |
|--|------|----|----------|----------|
| No. | Date | By | Approved | Revision |
| 1 | | | | |
| <p>MAZE ROAD WEST KELLOGG AVE. TO PAWNEE AVE. CITY OF WICHITA, KANSAS PHASE III - TRAFFIC CONTROL</p> | | | | |
| <p>POE & ASSOCIATES, INC. CONSULTING ENGINEERS 5940 E. Central, Suite 200 • Wichita, KS 67208-4242 Phone 316/685-4114 • FAX 316/685-4444</p> | | | | |
| | | | | |
| <p>FINAL</p> | | | | |
| <p>Engineer: M. THOMPSON Designer: P. FERGUSON KDOT Job No.: 87 N-0502-01 Poe Job No.: 1935 Date: SEPT 2009</p> | | | | |
| <p>Sheet 110 of 226</p> | | | | |