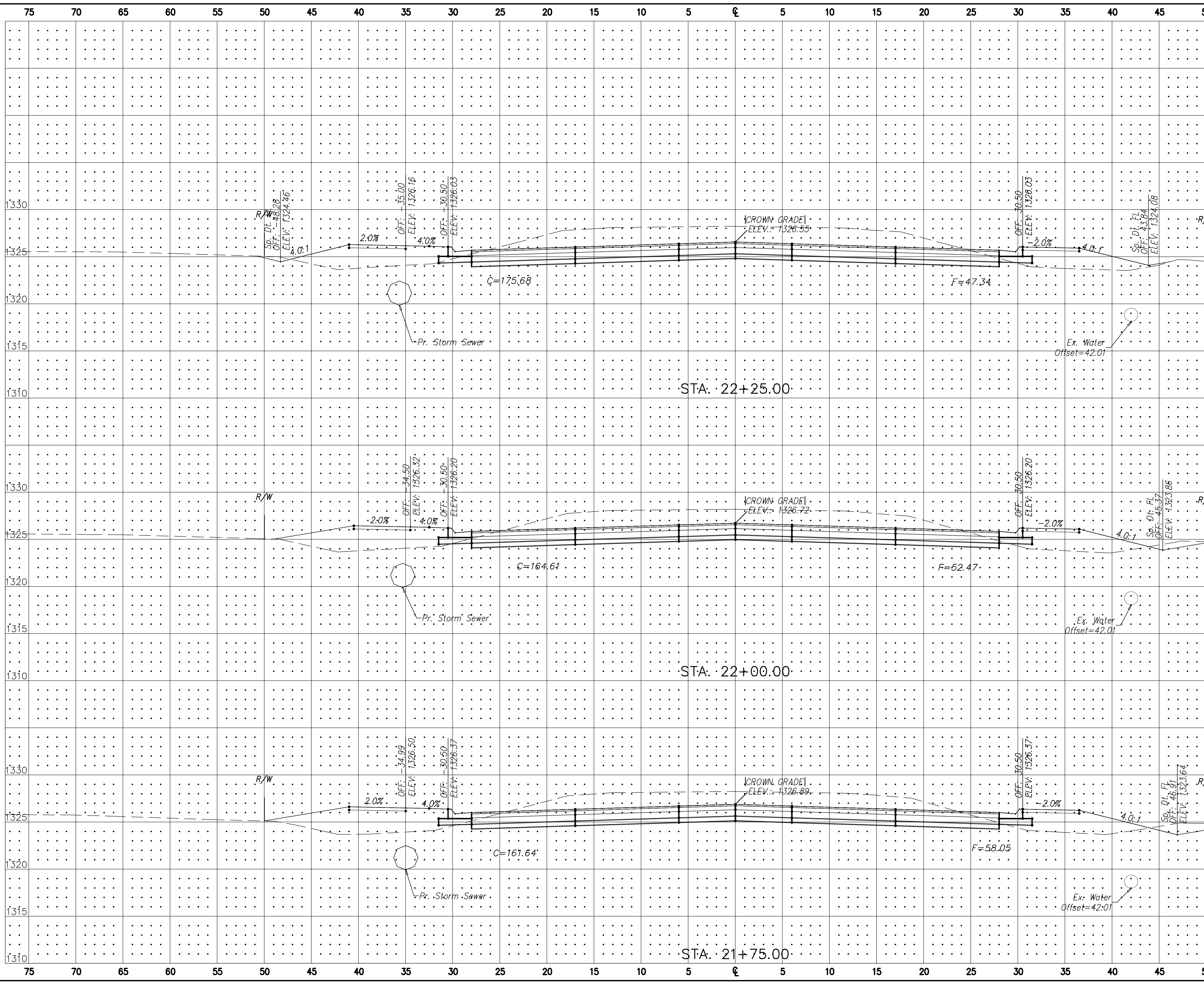


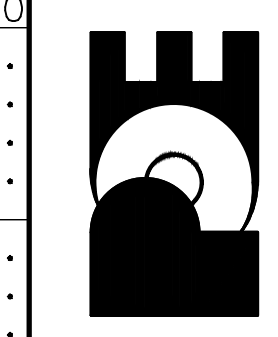
FHWA REG. NO.	STATE	PROJECT NO.:	YEAR	SHEET NUMBER	TOTAL SHEETS
7	KANSAS	87 N-0502-01	2009	154	226
A.R.R.A-N05(201)					
		55	60	65	70



No.	Date	By	Approved	Revision

MAIZE ROAD
WEST KELLOGG AVE. TO PAWNEE AVE.
CITY OF WICHITA, KANSAS

POE & ASSOCIATES, INC.
CONSULTING ENGINEERS
5940 E. Central, Suite 200 • Wichita, KS 67208-0242
Phone 316/665-4714 • FAX 316/665-4444



Engineer: P. FERGUSON
Designer: K. WARREN
KDOT Job No.: 87 N-0502-01
Poe Job No.: 1935
Date: AUG 2008