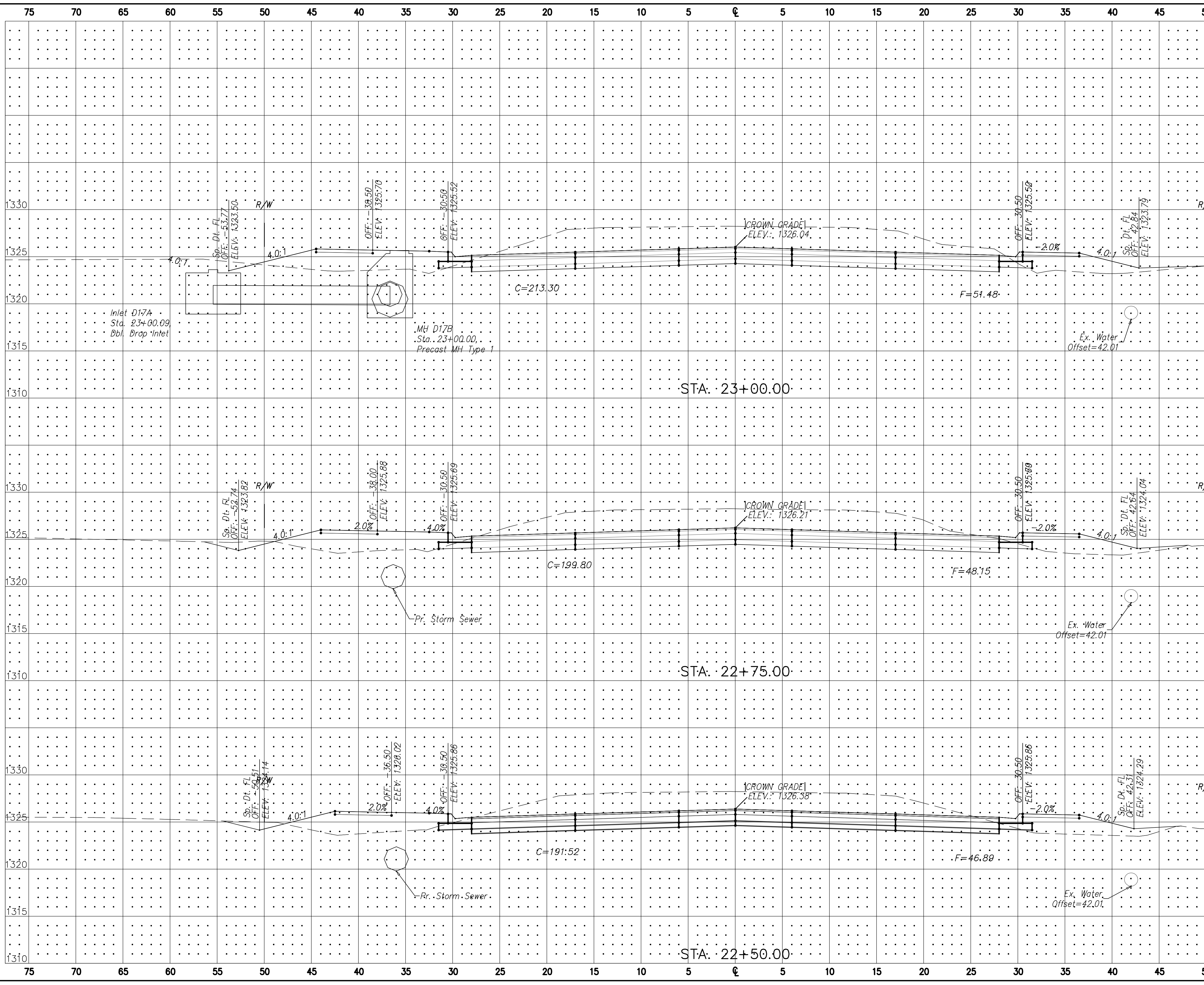


| FHWA REG. NO. | STATE | PROJECT NO.: | YEAR | SHEET NUMBER | TOTAL SHEETS |
|------------------|--------|--------------|------|--------------|--------------|
| 7 | KANSAS | 87 N-0502-01 | 2009 | 155 | 226 |
| A.R.R.A-N05(201) | | | | | |



| | | | | |
|-----|------|----|----------|----------|
| No. | Date | By | Approved | Revision |
| | | | | |

MAIZE ROAD
WEST KELLOGG AVE. TO PAWNEE AVE.
CITY OF WICHITA, KANSAS

POE & ASSOCIATES, INC.
CONSULTING ENGINEERS
5940 E. Central, Suite 200 • Wichita, KS 67208-0242
 Phone 316/685-4714 • FAX 316/685-4444

| | |
|--|---|
| Engineer: P. FERGUSON Designer: K. WARREN | KDOT Job No.: 87 N-0502-01 Sheet No.: 155 of 226 Date: AUG 2008 |
|--|---|