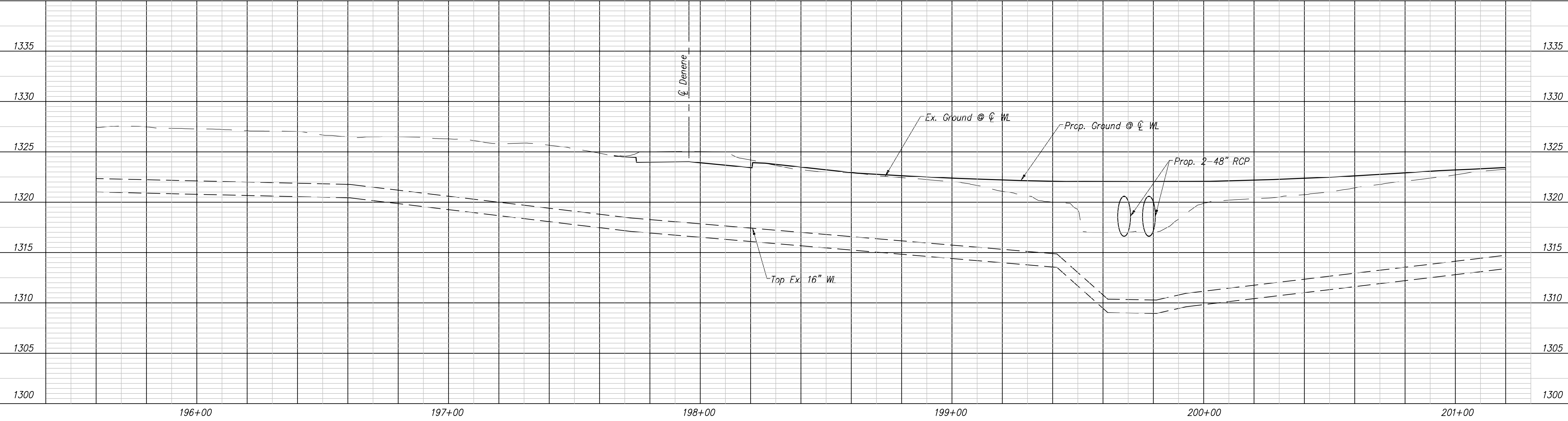
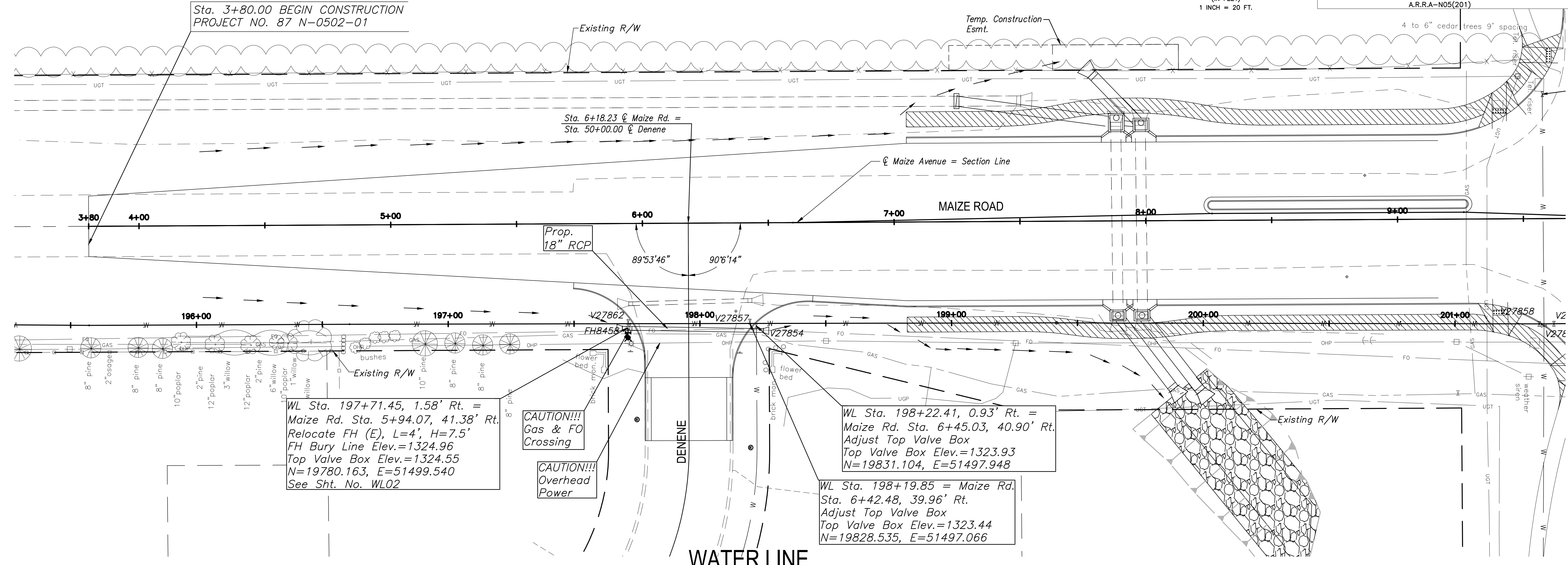
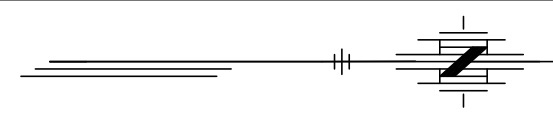
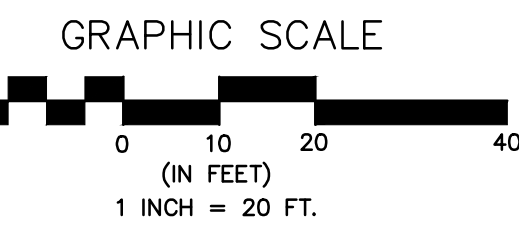


FHWA REG. NO.	STATE	PROJECT NO.:	YEAR	SHEET NUMBER	TOTAL SHEETS
7	KANSAS	87 N-0502-01	2009	WL03	WL15

A.R.R.A-N05(201)



No.	Date	By	Approved	Revision

MAIZE ROAD
WEST KELLOGG AVE. TO PAWNEE AVE.
CITY OF WICHITA, KANSAS
WATER LINE P & P 195+60 to 201+20

POE & ASSOCIATES, INC.
CONSULTING ENGINEERS
5940 E. Central, Suite 200 • Wichita, KS 67208-4242
Phone 316/685-4114 • FAX 316/685-4444

POE

ENGINEER: P. FERGUSON
DESIGNER: K. WAREN
KDOT Job No.: 87 N-0502-01
Date: SEPTEMBER 2009

Sheet
WL03 of WL15