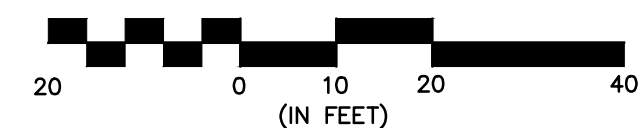
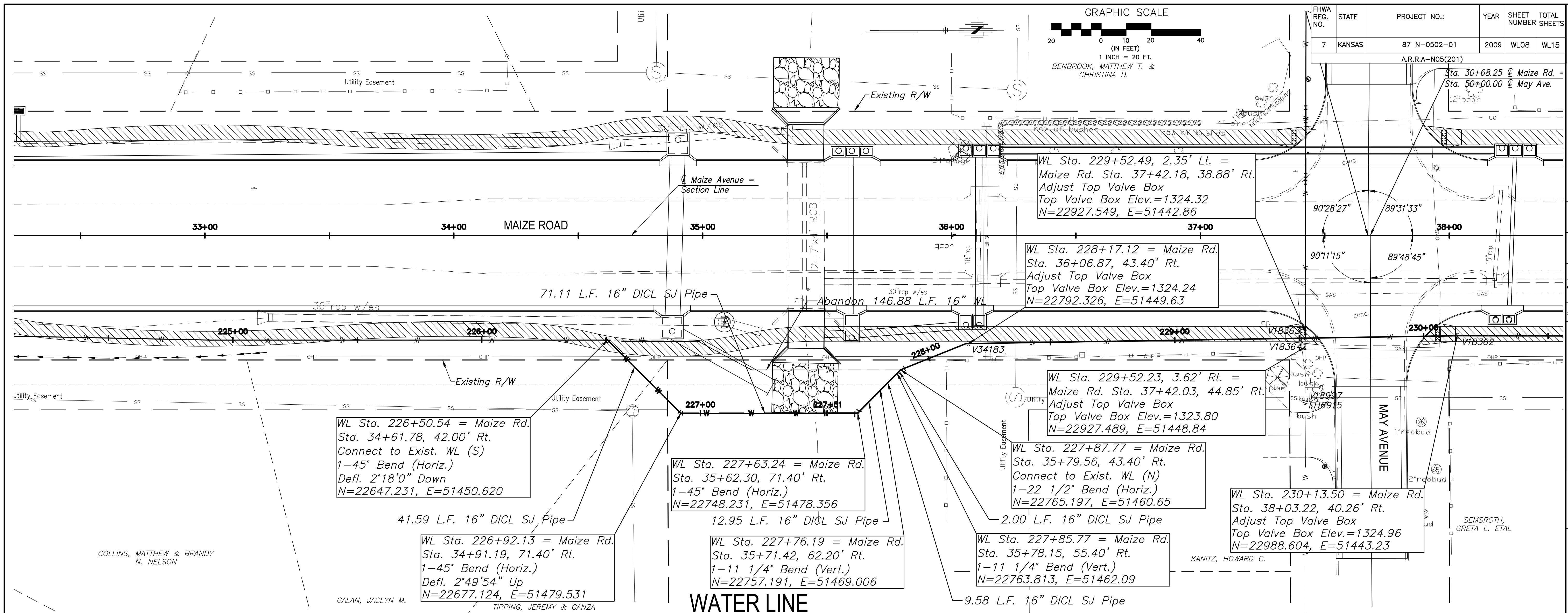


GRAPHIC SCALE



FHWA REG. NO.	STATE	PROJECT NO.:	YEAR	SHEET NUMBER	TOTAL SHEETS
7	KANSAS	87 N-0502-01	2009	WL08	WL15

A.R.R.A-N05(201)
 Sta. 30+68.25 @ Maize Rd. =
 Sta. 50+00.00 @ May Ave.
 12" pear



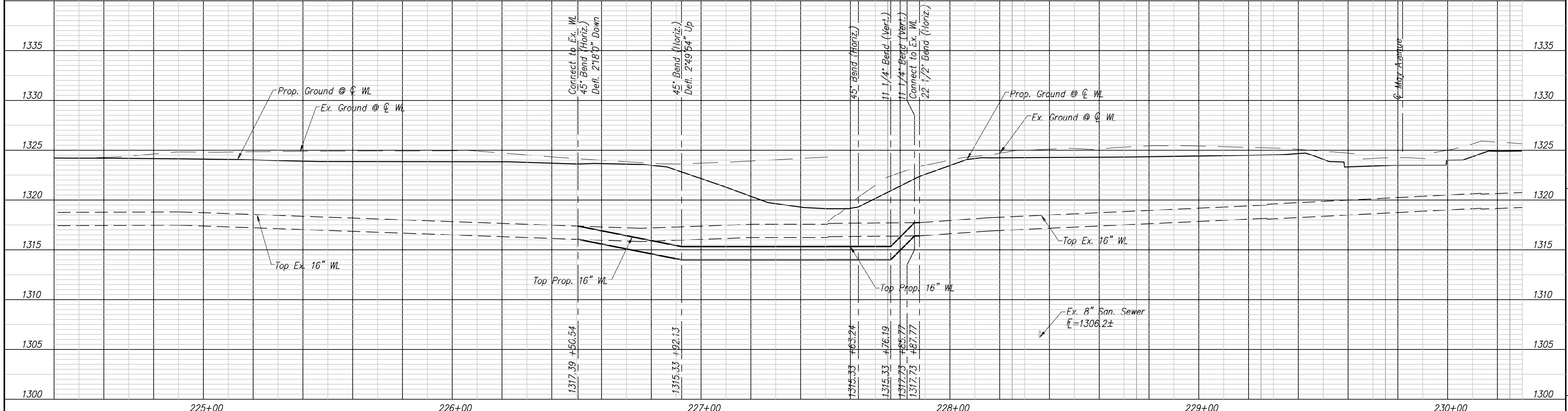
WL Sta. 226+50.54 = Maize Rd.
 Sta. 34+61.78, 42.00' Rt.
 Connect to Exist. WL (S)
 1-45° Bend (Horiz.)
 Defl. 2'18"0" Down
 N=22647.231, E=51450.620

WL Sta. 227+63.24 = Maize Rd.
 Sta. 35+62.30, 71.40' Rt.
 1-45° Bend (Horiz.)
 N=22748.231, E=51478.356

WL Sta. 229+52.23, 3.62' Rt. =
 Maize Rd. Sta. 37+42.03, 44.85' Rt.
 Adjust Top Valve Box
 Top Valve Box Elev.=1323.80
 N=22927.489, E=51448.84

WL Sta. 230+13.50 = Maize Rd.
 Sta. 38+03.22, 40.26' Rt.
 Adjust Top Valve Box
 Top Valve Box Elev.=1324.96
 N=22988.604, E=51443.23

WATER LINE



COLLINS, MATTHEW & BRANDY
 N. NELSON

GALAN, JACLYN M.

TIPPING, JEREMY & CANZA

KANITZ, HOWARD C.

SEMSROTH,
 GRETA L. ETAL

No.	Date	By	Approved	Revision

MAIZE ROAD
 WEST KELLOGG AVE. TO PAWNEE AVE.
 CITY OF WICHITA, KANSAS
 WATER LINE P & P 224+40 to 230+20

POE & ASSOCIATES, INC.
 CONSULTING ENGINEERS
 5940 E. Central, Suite 200 • Wichita, KS 67208-4242
 Phone 316/685-4114 • FAX 316/685-4444

Engineer: P. FERGUSON
 Designer: K. WAREN
 KDOT Job No.: 87 N-0502-01 Poe Job No.: 1935
 Date: SEPTEMBER 2009

Sheet
 WL08 of WL15