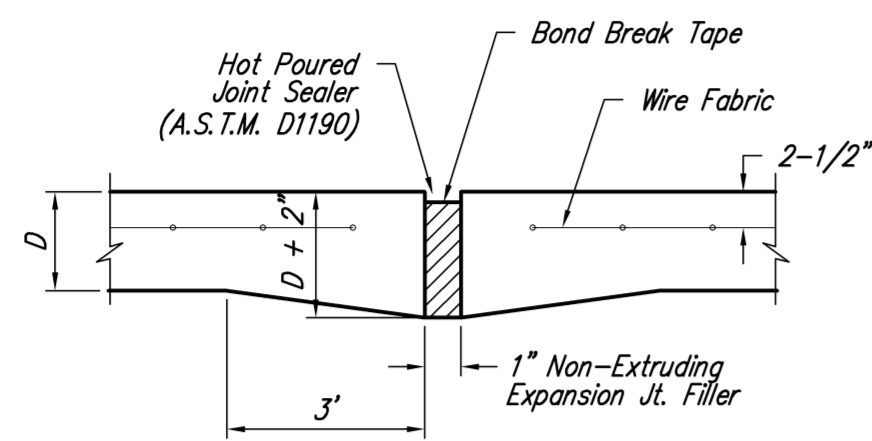
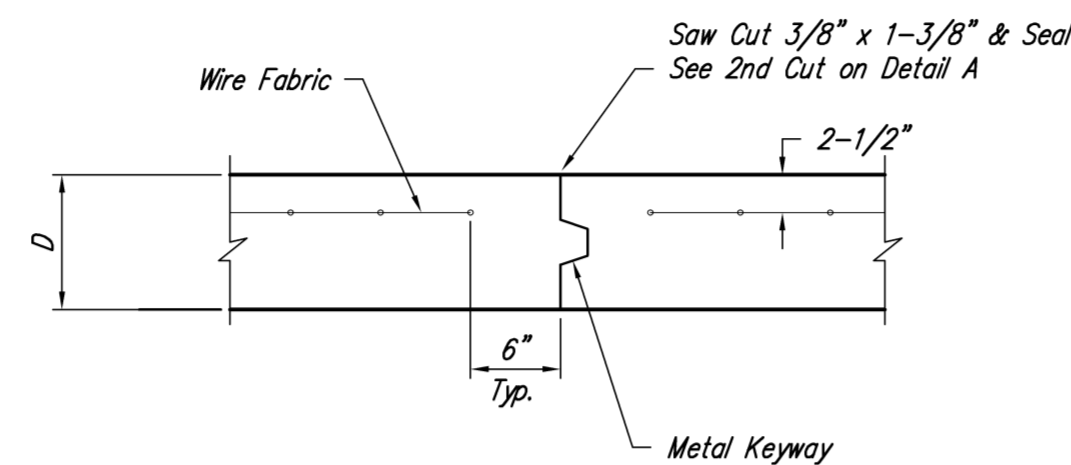


FHWA REG. NO.	STATE	PROJECT NO.:	YEAR	SHEET NUMBER	TOTAL SHEETS
7	KANSAS	87 N-0502-01	2009	35	228
A.R.R.A-N050(201)					

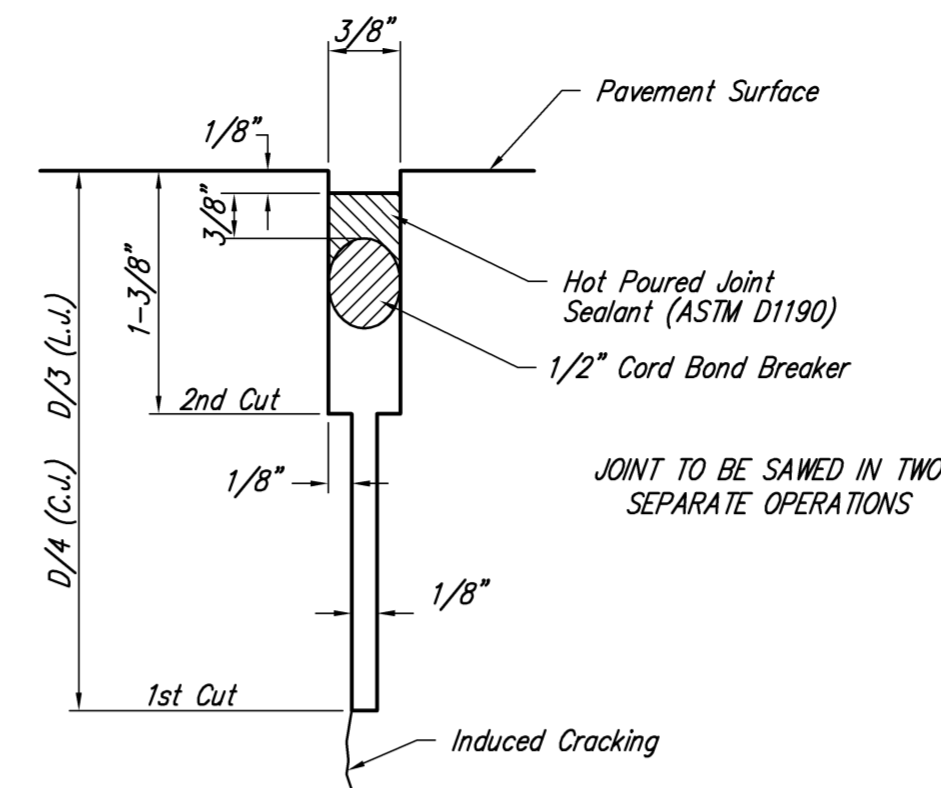


EXPANSION JOINT

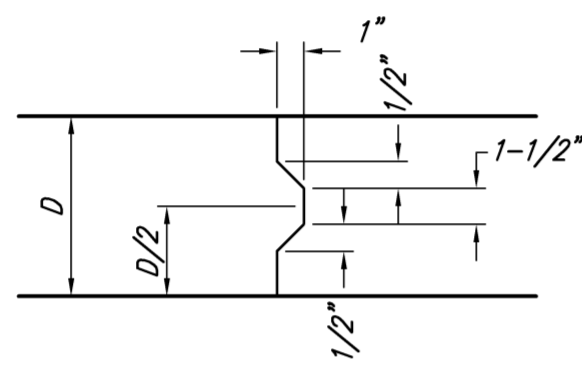
NOTE: Extra Thickness to be Subsidiary to Price of Square Yards Pavement



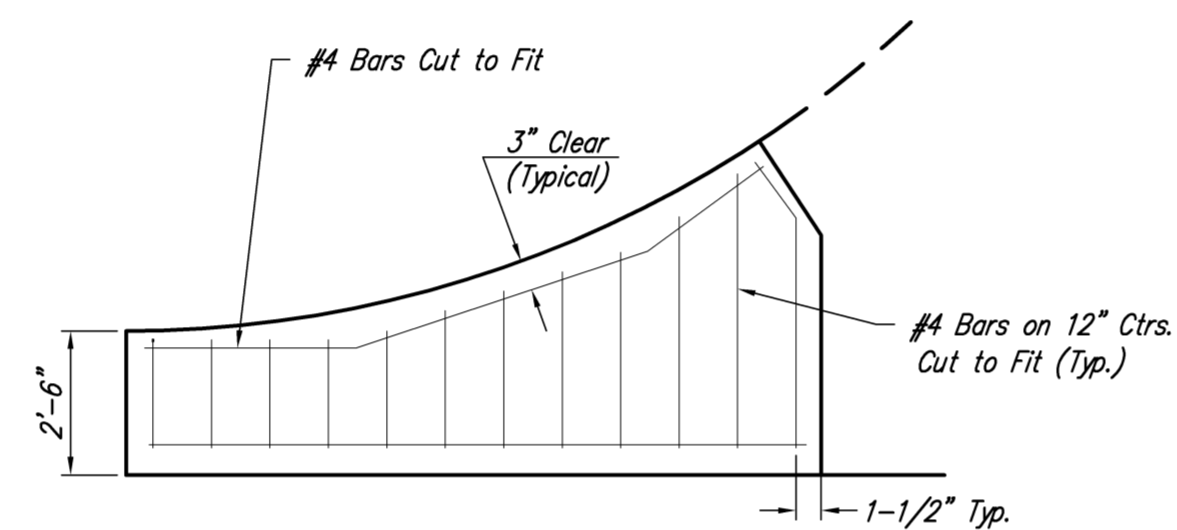
OPTIONAL CONTRACTION JOINT



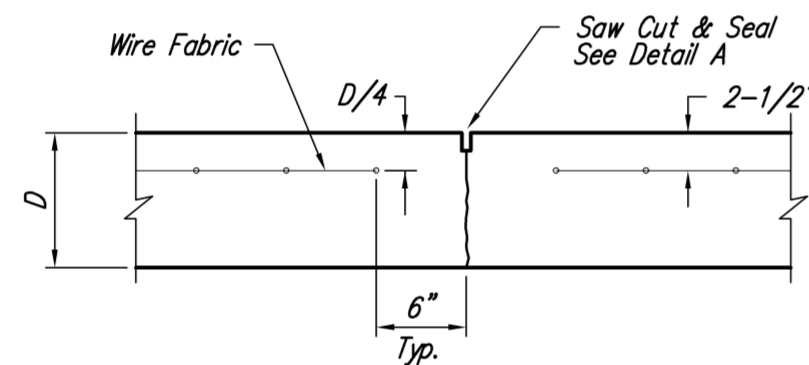
SAW JOINT DETAIL



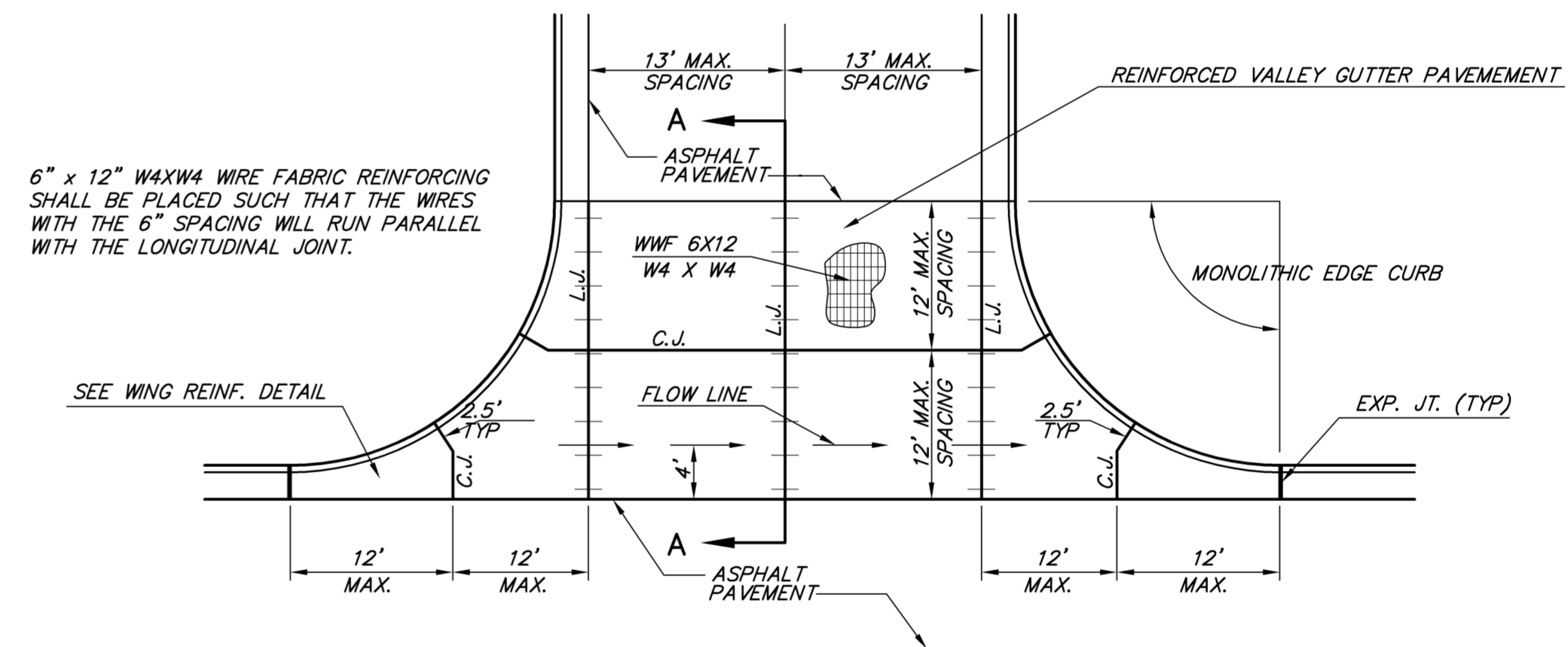
KEYWAY DETAIL



WING REINFORCING DETAIL

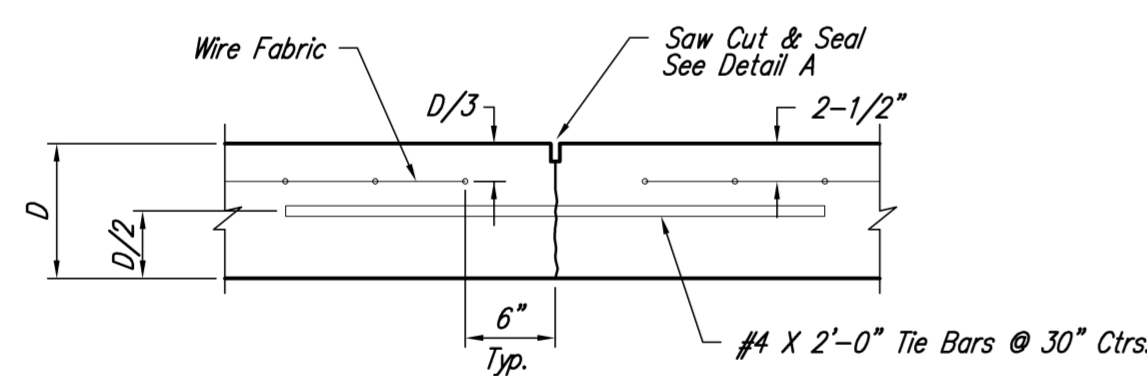


CONTRACTION JOINT DETAIL (C.J.)

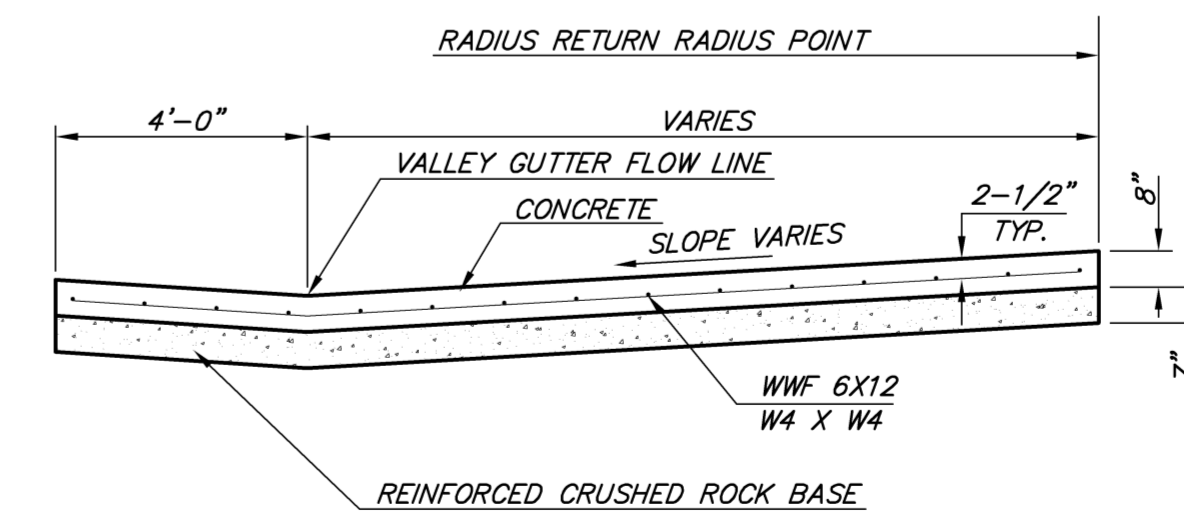


PLAN

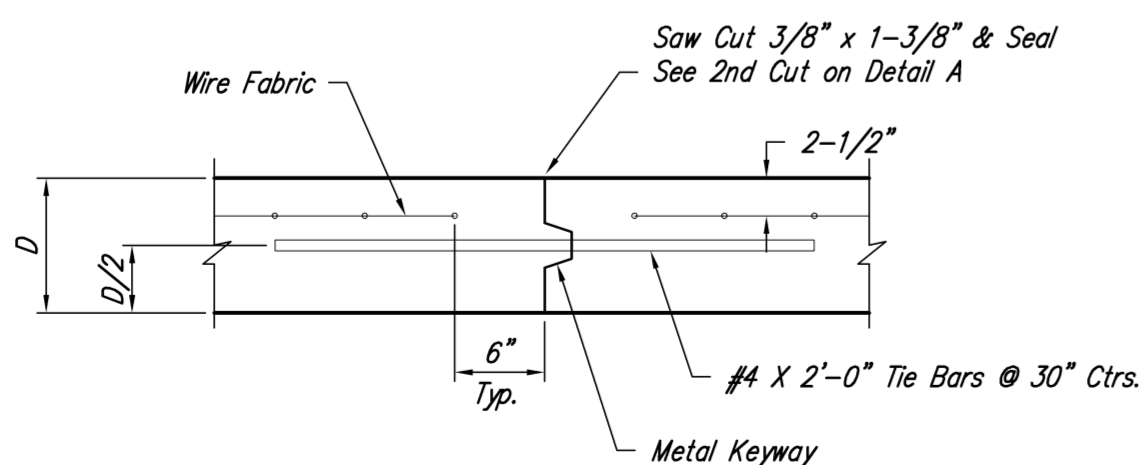
6" x 12" W4XW4 WIRE FABRIC REINFORCING SHALL BE PLACED SUCH THAT THE WIRES WITH THE 6" SPACING WILL RUN PARALLEL WITH THE LONGITUDINAL JOINT.



LONGITUDINAL JOINT DETAIL (L.J.)



SECTION A-A



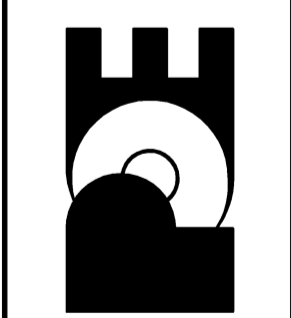
OPTIONAL LONGITUDINAL JOINT DETAIL (L.J.)

REINFORCED VALLEY GUTTER DETAIL

No.	Date	By	Approved	Revision
1				
2				
3				

MAIZE ROAD
WEST KELLOGG AVE. TO PAWNEE AVE.
CITY OF WICHITA, KANSAS
VALLEY GUTTER DETAIL

POE & ASSOCIATES, INC.
CONSULTING ENGINEERS
5940 E. Central, Suite 200 • Wichita, KS 67208-4242
Phone 316/685-4111 • FAX 316/685-4444



Engineer: P. FERGUSON
Designer: K. WARREN
KDOT Job No.: 87 N-0502-01
Poe Job No.: 1935
Date: SEPTEMBER 2009