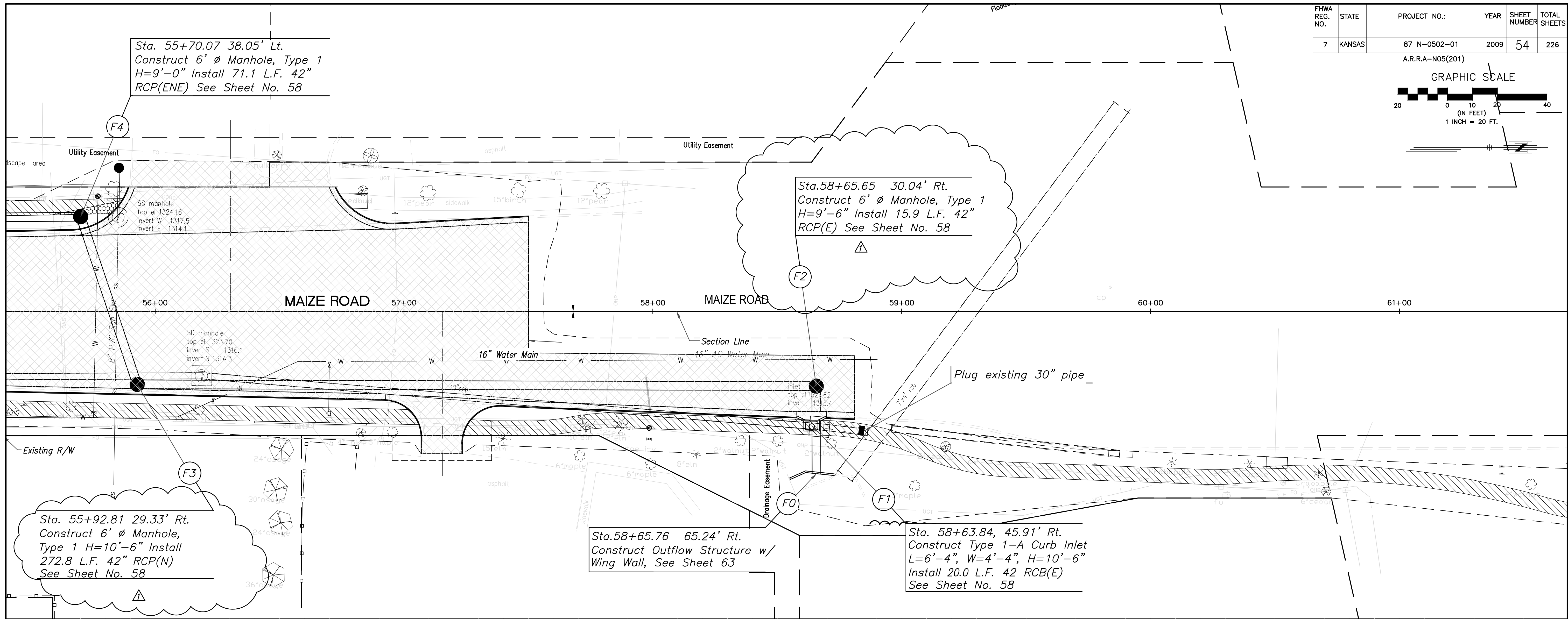
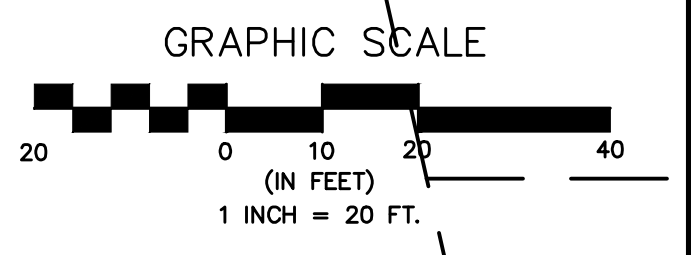


FHWA REG. NO.	STATE	PROJECT NO.:	YEAR	SHEET NUMBER	TOTAL SHEETS
7	KANSAS	87 N-0502-01	2009	54	226



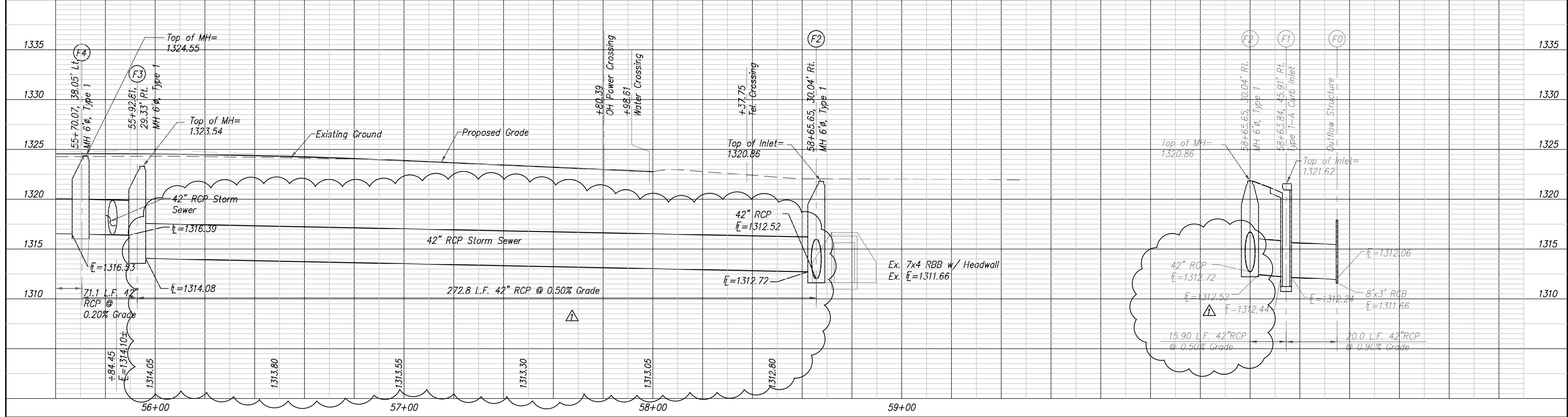
Sta. 55+70.07 38.05' Lt.
Construct 6' ϕ Manhole, Type 1
H=9'-0" Install 71.1 L.F. 42" RCP(ENE) See Sheet No. 58

Sta. 58+65.65 30.04' Rt.
Construct 6' ϕ Manhole, Type 1
H=9'-6" Install 15.9 L.F. 42" RCP(E) See Sheet No. 58

Sta. 55+92.81 29.33' Rt.
Construct 6' ϕ Manhole, Type 1
H=10'-6" Install 272.8 L.F. 42" RCP(N) See Sheet No. 58

Sta. 58+65.76 65.24' Rt.
Construct Outflow Structure w/ Wing Wall, See Sheet 63

Sta. 58+63.84, 45.91' Rt.
Construct Type 1-A Curb Inlet
L=6'-4", W=4'-4", H=10'-6"
Install 20.0 L.F. 42 RCB(E) See Sheet No. 58



No.	Date	By	Approved	Revision
1	12/15/09	SS	JD	

MAIZE ROAD
WEST KELLOGG AVE. TO PAWNEE AVE.
CITY OF WICHITA, KANSAS
STORM SEWER P & P 55+60 to 57+50

POE & ASSOCIATES, INC.
CONSULTING ENGINEERS
5940 E. Central, Suite 200 • Wichita, KS 67208-4242
Phone 316/685-4114 • FAX 316/685-4444

FINAL

Engineer: P. FERGUSON
Designer: K. WARREN
KDOT Job No.: 87 N-0502-01 Poa Job No.: 1935
Date: SEPTEMBER 2009

Sheet 54 of 226