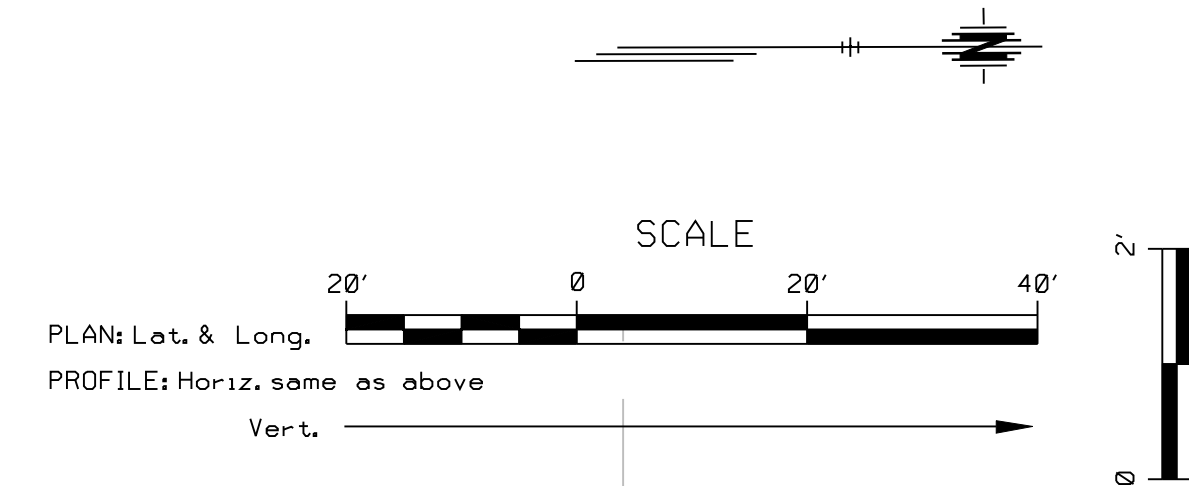
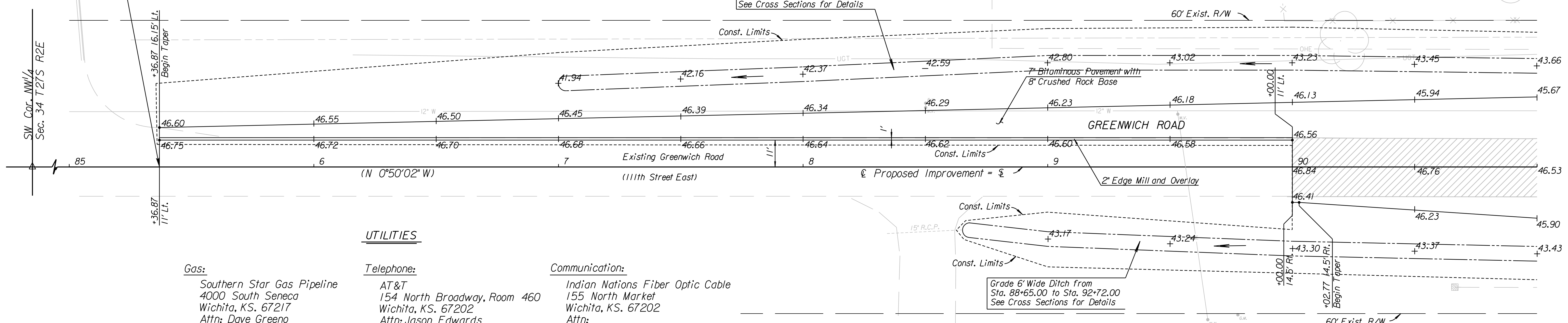


COUNTY	STATE	PROJECT NO.	YEAR	SHEET NO.	TOTAL SHEETS
SEDGWICK	KANSAS	87 N-0386-01	2009	9	255



STA. 85+36.87 BEGIN CONSTRUCTION



**UTILITIES**

- |   |   |   |
|---|---|---|
| <p><b>Gas:</b></p> <p>Southern Star Gas Pipeline<br/>4000 South Seneca<br/>Wichita, KS. 67217<br/>Attn: Dave Greeno<br/>Cell: 316-841-2332<br/>Fax: 316-529-6692<br/>Ph. 1-800-324-9696</p> <p><b>Gas:</b></p> <p>Kansas Gas Service<br/>1021 East 26th Street North<br/>Wichita, KS 67219<br/>Attn: Jim Cob<br/>Ph. 316-832-3122</p> <p><b>Sanitary Sewer:</b></p> <p>City of Wichita<br/>455 North Main<br/>Wichita KS. 67202<br/>Attn: LaDonna Lawrenz<br/>Ph. 316-268-4555</p> <p><b>Water:</b></p> <p>City of Wichita<br/>455 North Main<br/>Wichita KS. 67202<br/>Attn: Greg Lolly<br/>Ph. 316-268-4555</p> | <p><b>Telephone:</b></p> <p>AT&amp;T<br/>154 North Broadway, Room 460<br/>Wichita, KS. 67202<br/>Attn: Jason Edwards<br/>Ph. 316-268-2759<br/>Ph. 1-800-344-7233</p> <p><b>Cable TV:</b></p> <p>Cox Communications<br/>901 S. George Washington Blvd.<br/>Wichita, KS 67211<br/>Attn: Eva Moore<br/>Ph. 316-262-4270<br/>Ph. 1-800-DIG-SAFE<br/>Ph. 316-687-2470</p> <p><b>Electric:</b></p> <p>Westar (KGE)<br/>1900 East Central<br/>Wichita, KS 67214<br/>Attn: Miles Capps<br/>Ph. 316-261-6251</p> | <p><b>Communication:</b></p> <p>Indian Nations Fiber Optic Cable<br/>155 North Market<br/>Wichita, KS. 67202<br/>Attn:<br/>Ph. 1-800-248-9680</p> <p><b>Communication:</b></p> <p>U.S. Sprint<br/>7062 Universal Ave<br/>Kansas City, Mo. 64120<br/>Attn: Brian George<br/>Ph. 1-816-916-1161</p> <p><b>Traffic Signal:</b></p> <p>City of Wichita<br/>455 North Main<br/>Wichita KS. 67202<br/>Attn: Paul Gunzelman<br/>Ph. 316-268-4393</p> |
|---|---|---|

Greenwich Rd. Road Church of Christ  
1746 S. Greenwich Rd.

**LEGEND**

- Sidewalk and Pavement to be Removed
  - Tree / Shrubs to be Removed
- Note: Elevations shown at Type I Curb lines are top of curb and flowline elevations.

CITY OF WICHITA  
JAMES ARMOUR, P.E., CITY ENGINEER  
GREENWICH ROAD

**PLAN**

STA. 85+36.87 TO STA. 91+00.00

**PB PARSONS BRINCKERHOFF**  
188. Wichita, Kansas

SCALE 1"=20' DATE 11/23/2009 DWG. NO. 35751A

SW Cor., NW 1/4 Sec. 34, T27S, R2E  
1. 0.00' Rt. of C Sta. 73+38.82  
2. Not Found

B.M. #8 Chiseled "c" on top of light pole  
72' Rt. & Sta. 88+34.94 El. 1346.96

K:\35751A\CADD\SHEETS\ROADWAY\GRNWHPL01.dgn SURV. PLOT CADD DES. RAN DR. JR TR. CKD. JUR APP.