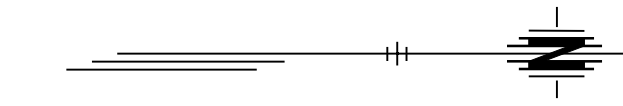
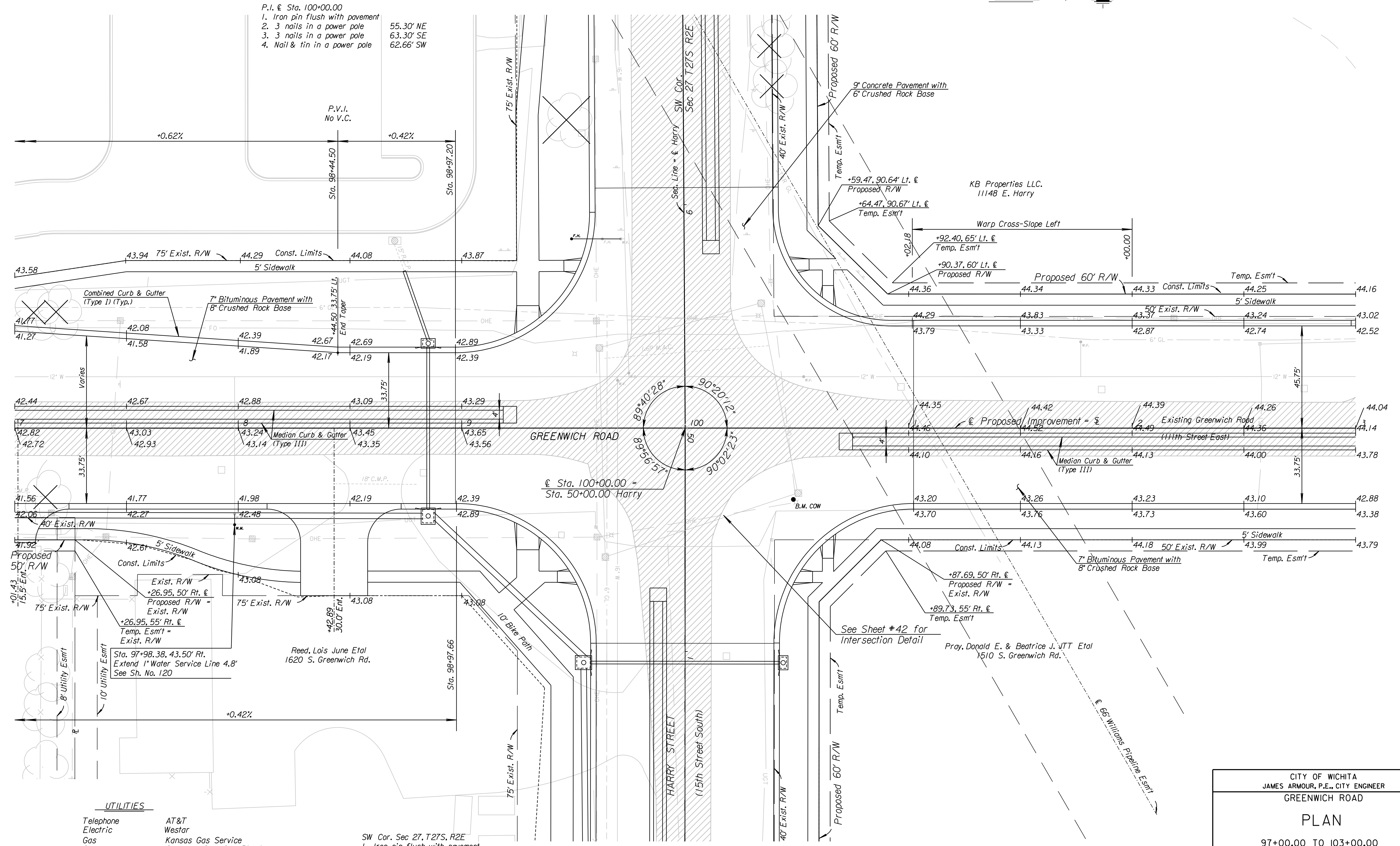


COUNTY	STATE	PROJECT NO.	YEAR	SHEET NO.	TOTAL SHEETS
SEDGWICK	KANSAS	87 N-0386-01	2009	13	255



P.I. @ Sta. 100+00.00
 1. Iron pin flush with pavement
 2. 3 nails in a power pole 55.30' NE
 3. 3 nails in a power pole 63.30' SE
 4. Nail & tin in a power pole 62.66' SW



UTILITIES

Telephone	AT&T
Electric	Westar
Gas	Kansas Gas Service
Gas	Southern Star Gas Pipeline
Water	City of Wichita
Traffic Signal	City of Wichita
Cable TV	Cox Communications

SW Cor. Sec 27, T27S, R2E
 1. Iron pin flush with pavement
 2. 0.00' Rt. of @ Sta. 100+00.00
 3. 3 nails in a power pole 55.30' NE
 4. 3 nails in a power pole 63.30' SE
 5. Nail & tin in a power pole 62.66' SW

City of Wichita B.M. Brass Disk on traffic signal base
 32' Rt. @ Sta. 100+48.40 El. 1343.91

CITY OF WICHITA JAMES ARMOUR, P.E., CITY ENGINEER GREENWICH ROAD	
PLAN 97+00.00 TO 103+00.00	
 Wichita, Kansas	
SCALE 1"=20'	DATE 11/23/2009
DWG. NO. 35751A	

K:\35751A\CADD\SHEETS\ROADWAY\GRNWHPL03.dgn

SURV. PLOT CADD DES. JRI TR. CKD. JJR APP.