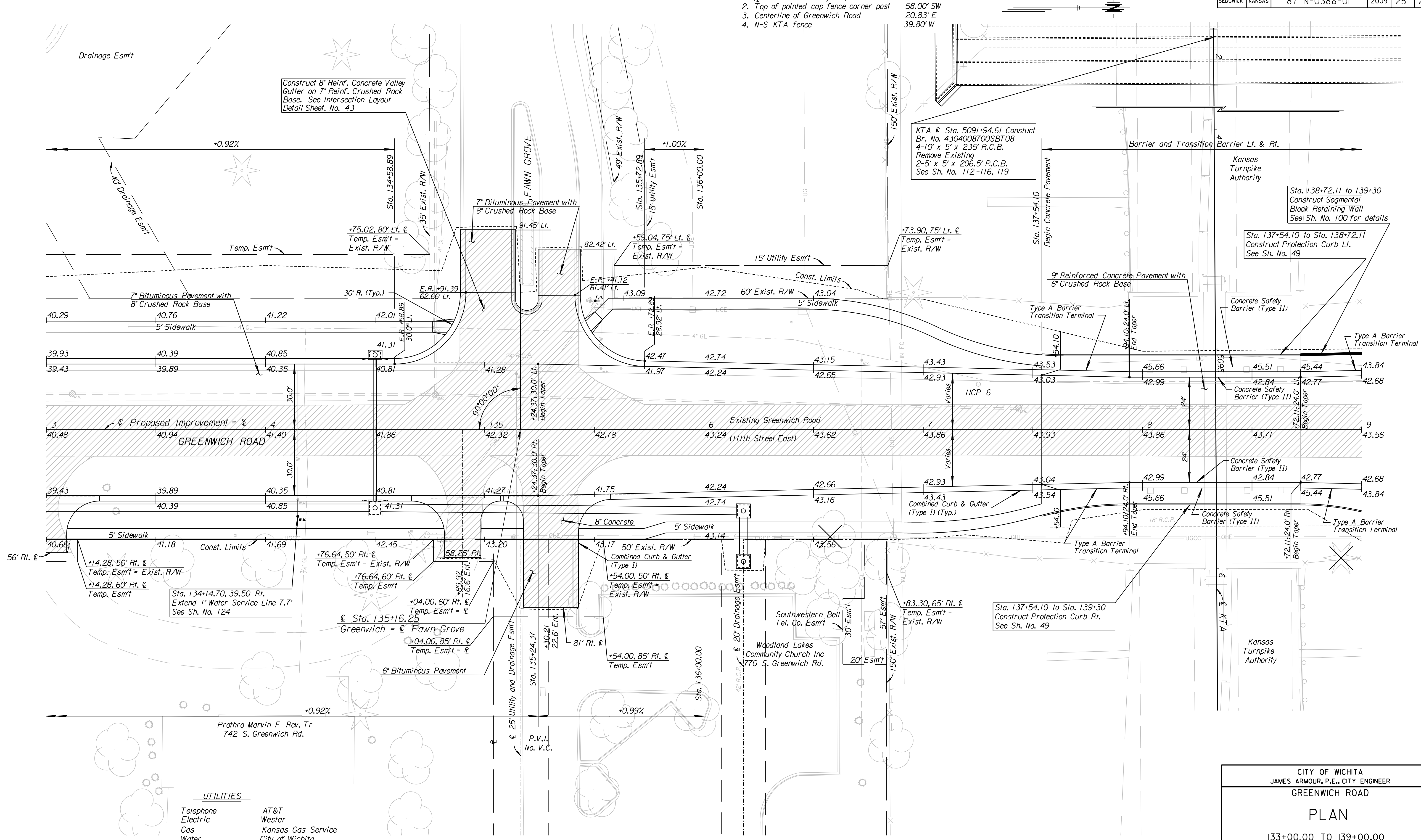


COUNTY	STATE	PROJECT NO.	YEAR	SHEET NO.	TOTAL SHEETS
SEDGWICK	KANSAS	87 N-0386-01	2009	25	255

- HCP Pt. 6 =
 @ Sta. 137+25.17, 20.83' Lt.
 1. 1/2" Rebar with Orange Cap
 2. Top of pointed cap fence corner post
 3. Centerline of Greenwich Road
 4. N-S KTA Fence



Construct 8" Reinf. Concrete Valley Gutter on 7" Reinf. Crushed Rock Base. See Intersection Layout Detail Sheet, No. 43

KTA @ Sta. 5091+94.61 Construct Br. No. 43040087005BT08 4-10' x 5' x 235' R.C.B. Remove Existing 2-5' x 5' x 206.5' R.C.B. See Sh. No. 112-116, 119

Sta. 138+72.11 to 139+30 Construct Segmental Block Retaining Wall See Sh. No. 100 for details

Sta. 137+54.10 to Sta. 138+72.11 Construct Protection Curb Lt. See Sh. No. 49

Sta. 134+14.70, 39.50 Rt. Extend 1" Water Service Line 7.7' See Sh. No. 124

Sta. 137+54.10 to Sta. 139+30 Construct Protection Curb Rt. See Sh. No. 49

UTILITIES

Telephone	AT&T
Electric	Westar
Gas	Kansas Gas Service
Water	City of Wichita
Sanitary Sewer	City of Wichita
Cable TV	Cox Communications
Communications	Indian Nations Fiber Optic
Communications	U.S. Sprint

CITY OF WICHITA
 JAMES ARMOUR, P.E., CITY ENGINEER
 GREENWICH ROAD
 PLAN
 133+00.00 TO 139+00.00

PB PARSONS BRINCKERHOFF
 Wichita, Kansas

SCALE 1"=20' DATE 11/23/2009 DWG. No. 35751A

Note: Plug Existing 18" RCP Under KTA with Concrete (Both Ends) Subsidiary.

K:\35751A\CADD\SHEETS\ROADWAY\GRNWHPL09.dgn
 SURV. PLOT CADD DES. JRI TR. CKD. JJR APP.