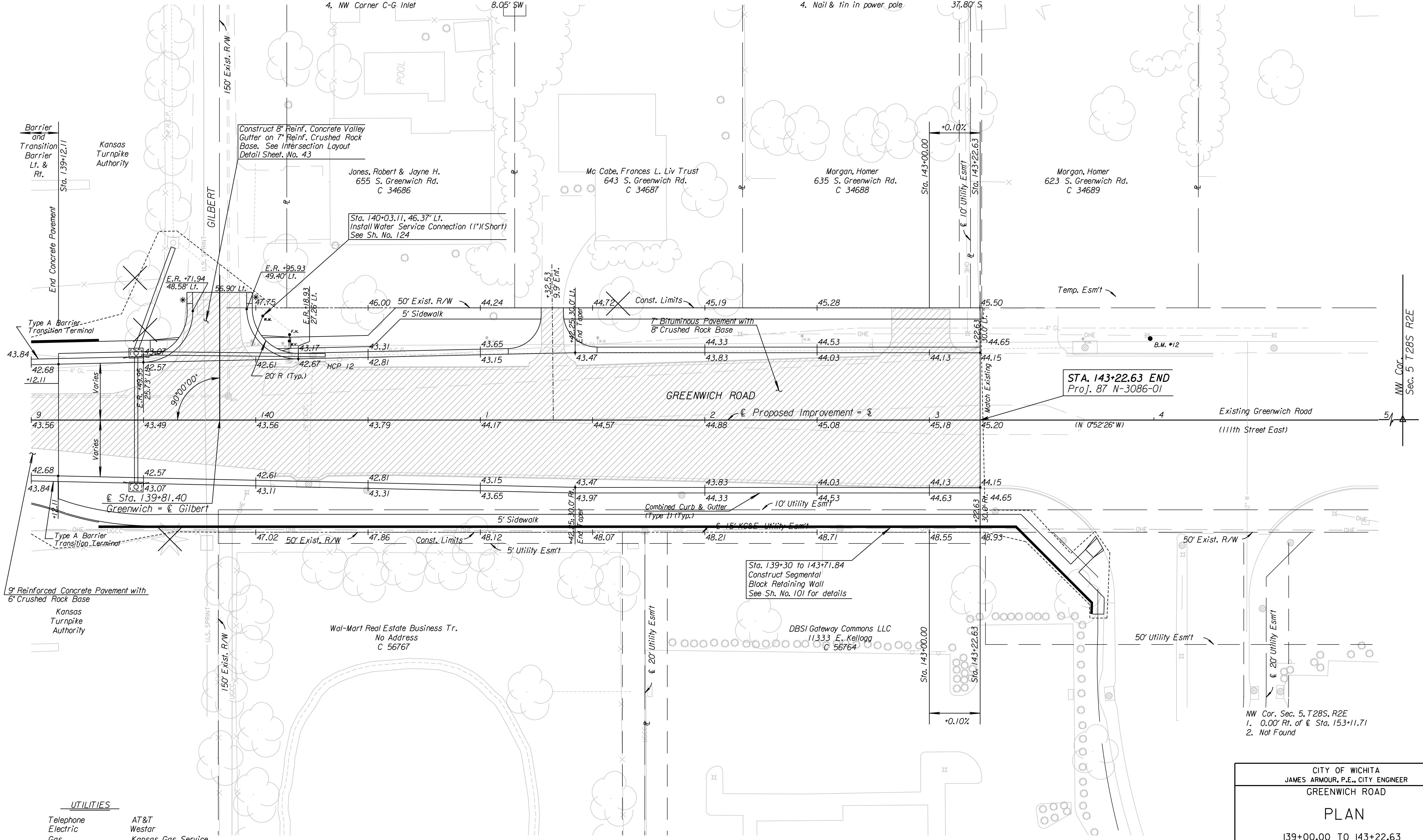


COUNTY	STATE	PROJECT NO.	YEAR	SHEET NO.	TOTAL SHEETS
SEDGWICK	KANSAS	87 N-0386-01	2009	27	255

HCP Pt. 12 =  
 @ Sta. 140+37.32, 26.97' Lt.  
 1. 1/2" Rebar with Orange Cap  
 2. Top of pointed cap fence corner post 86.20' SW  
 3. Penta bolt on Fire Hydrant 23.10' S  
 4. NW Corner C-G Inlet 8.05' SW

HCP Pt. 7 =  
 @ Sta. 152+35.84, 48.68' Rt.  
 1. 1/2" Rebar with Orange Cap  
 2. Brass Cap BM on Signal base 23.60' NE  
 3. Top of Concrete post SBC Sign 29.90' SE  
 4. Nail & tin in power pole 37.80' S



**UTILITIES**

Telephone	AT&T
Electric	Westar
Gas	Kansas Gas Service
Water	City of Wichita
Sanitary Sewer	City of Wichita
Cable TV	Cox Communications
Communications	U.S. Sprint

\* 5' Transition between  
 6" Curb to no Curb

B.M. #12 Chiseled "D" on NE corner traffic signal base  
 36' Lt. @ Sta. 143+98.35 El. 1345.96

City of Wichita B.M. Brass Disk on traffic signal base  
 SE of int 66.94' Rt. @ Sta. 152+50.79 El. 1352.18

CITY OF WICHITA  
 JAMES ARMOUR, P.E., CITY ENGINEER  
 GREENWICH ROAD  
 PLAN  
 139+00.00 TO 143+22.63

**PB** PARSONS  
 BRINCKERHOFF  
 Wichita, Kansas

SCALE 1"=20' DATE 11/23/2009 DWG. NO. 35751A

K:\35751A\CADD\SHEETS\ROADWAY\GRWHPLO.dgn SURV. PLOT CADD DES. JRI TR. CKD. JUR APP.

NW Cor. Sec. 5 T28S R2E