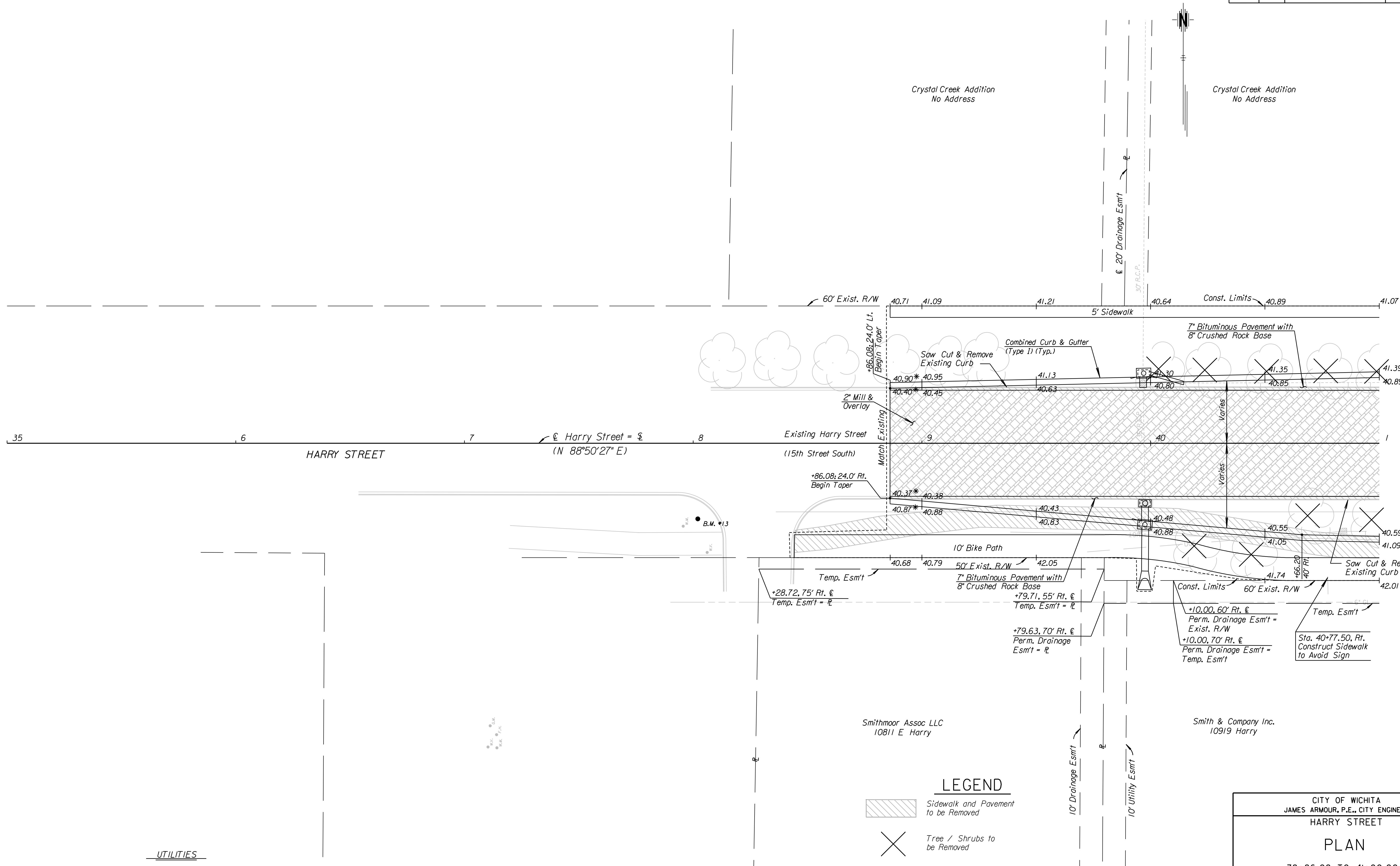


COUNTY	STATE	PROJECT NO.	YEAR	SHEET NO.	TOTAL SHEETS
SEDGWICK	KANSAS	87 N-0386-01	2009	29	255



K:\35751A\CADD\SHEETS\ROADWAY\HARRY\PL01.dgn SURV. PLOT CADD DES. RAN DR. JR TR. CKD. JJR APP.

**UTILITIES**

Telephone	AT&T
Electric	Westar
Gas	Kansas Gas Service
Water	City of Wichita
Cable TV	Cox Communications

B.M. \*13 on top of fire hydrant hex bolt with steel plate stamped RD 33' Rt. of Harry Street Sta. 38+02.02 El. 1342.98

**LEGEND**

- Sidewalk and Pavement to be Removed
- Tree / Shrubs to be Removed
- Mill & Overlay
- Match Existing

CITY OF WICHITA JAMES ARMOUR, P.E., CITY ENGINEER HARRY STREET		
<b>PLAN</b>		
38+86.08 TO 41+00.00		
<b>PB</b> PARSONS BRINCKERHOFF 188. Wichita, Kansas		
SCALE 1"=20'	DATE 11/23/2009	DWG. NO. 35751A