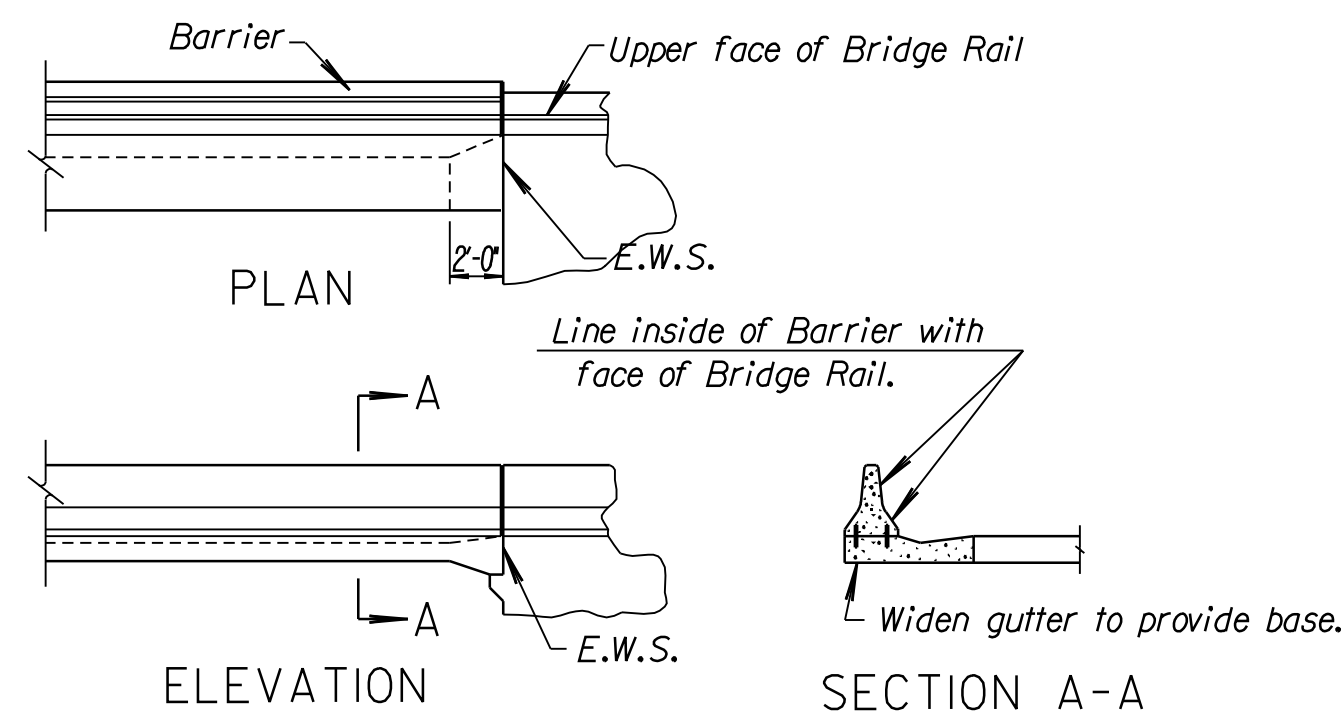
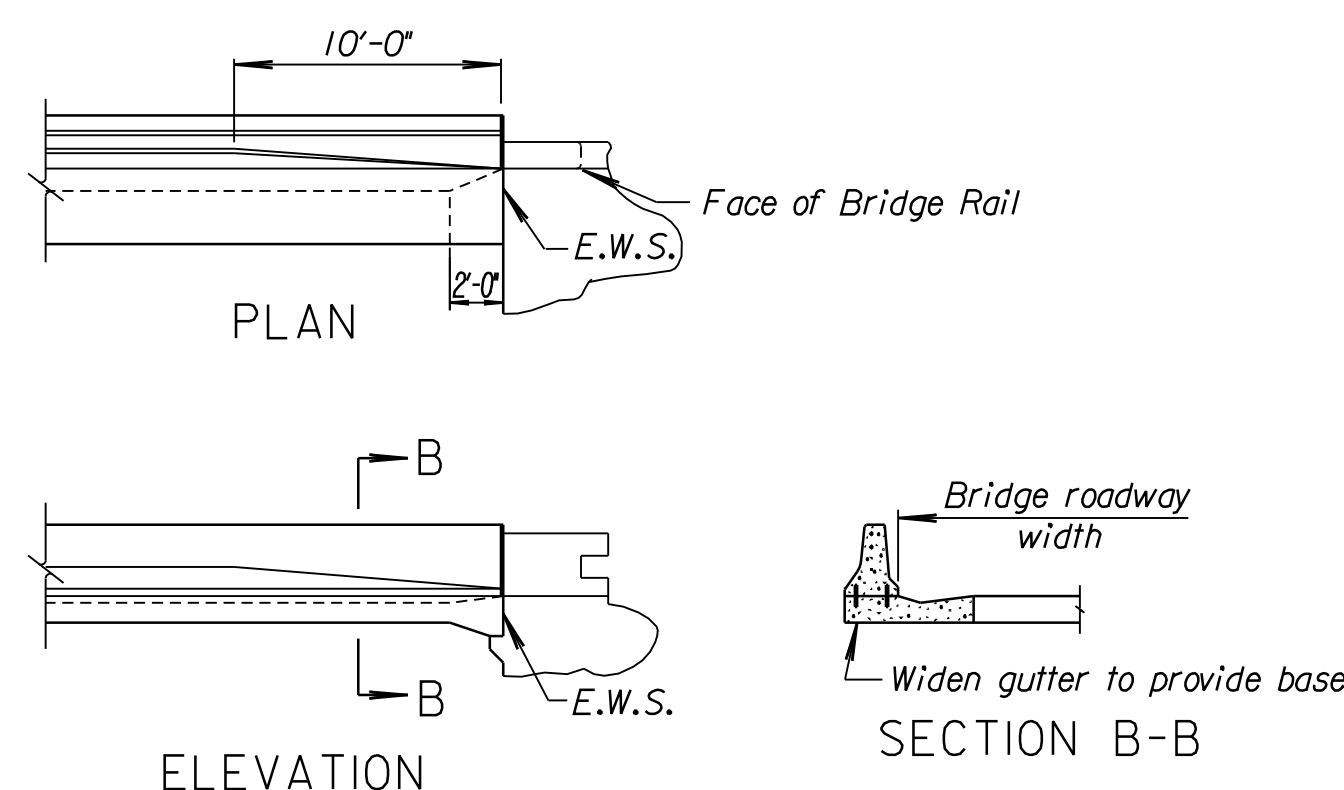


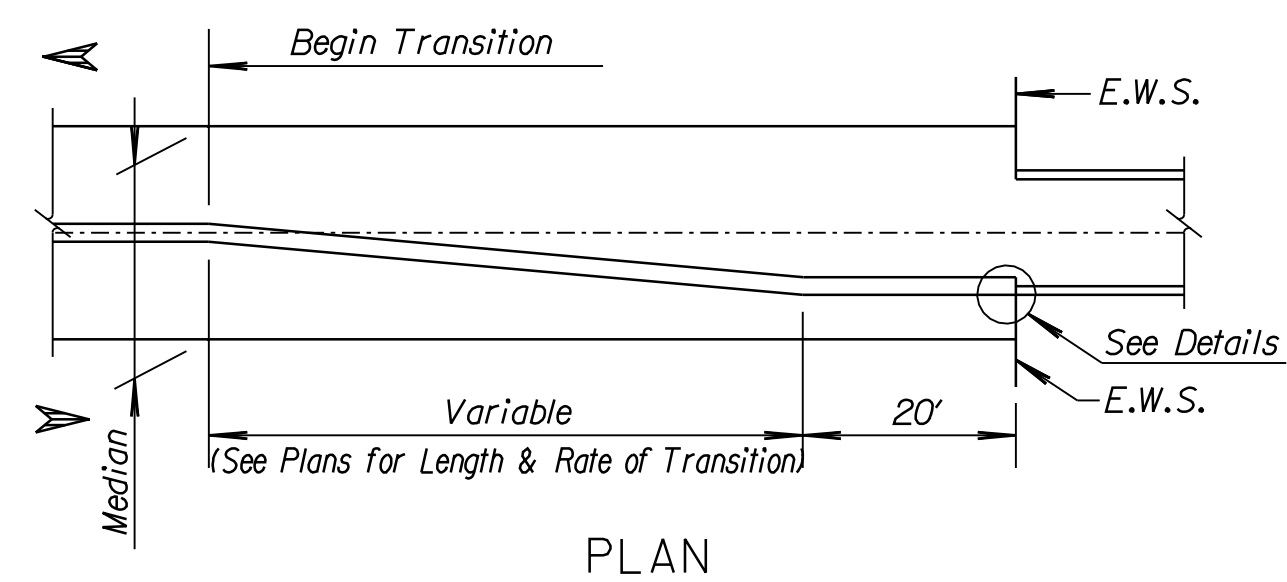
STATE	PROJECT NO.	YEAR	SHEET NO.	TOTAL SHEETS
KANSAS	87 N-0386-01	2009	52	255



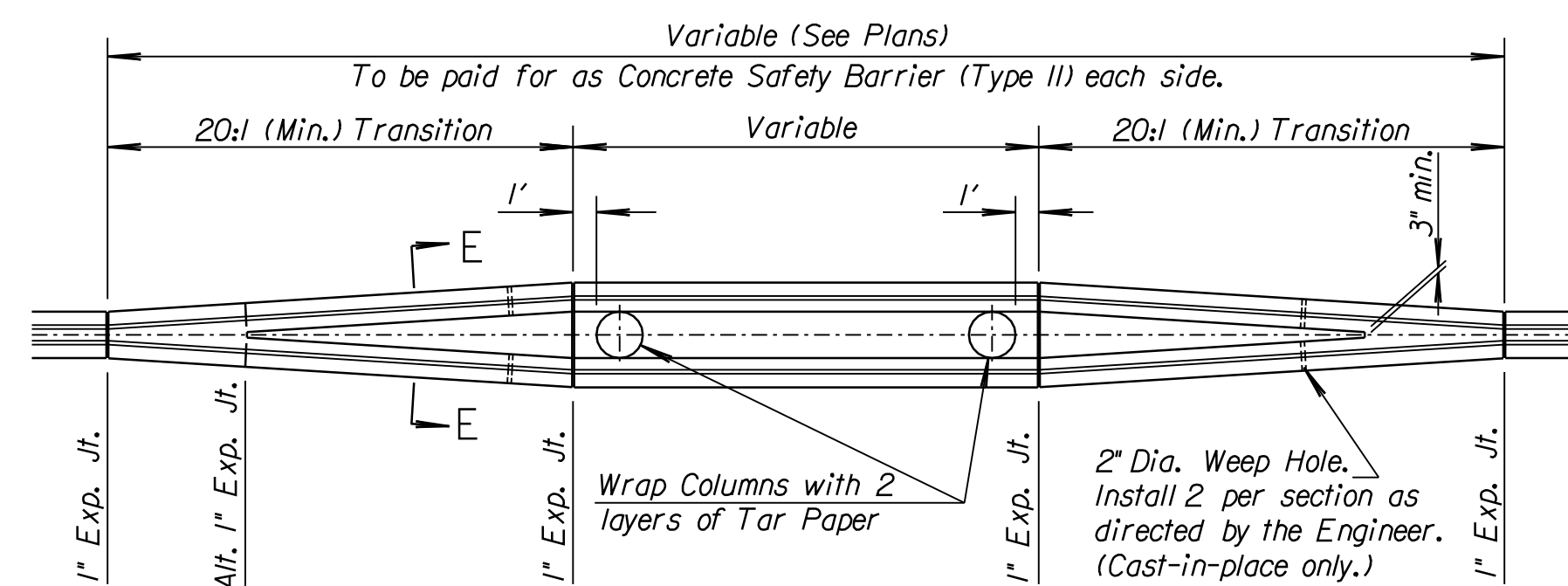
DETAIL FOR BRIDGE WITH SAFETY TYPE RAIL



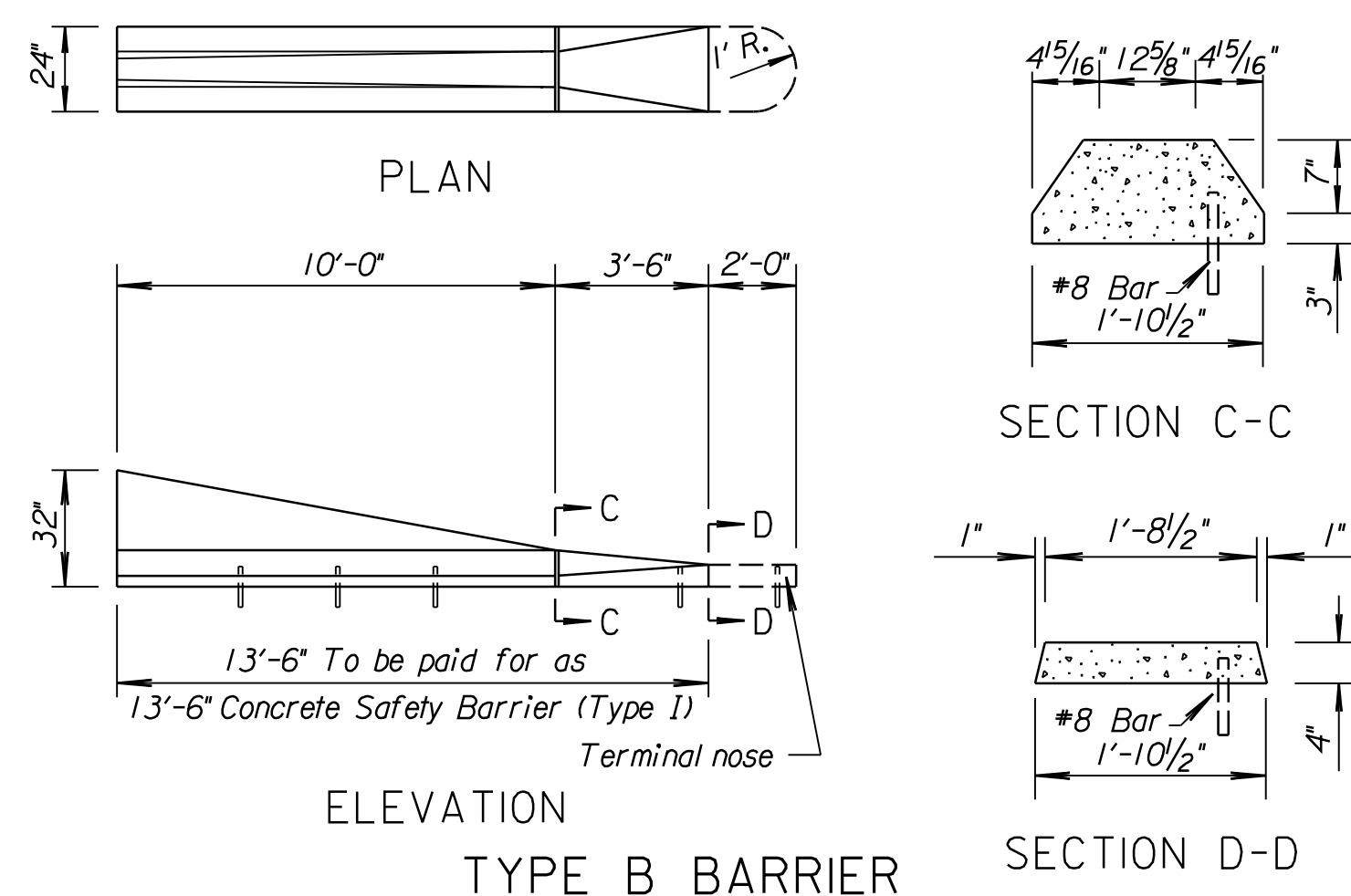
DETAIL FOR BRIDGE WITHOUT SAFETY TYPE RAIL



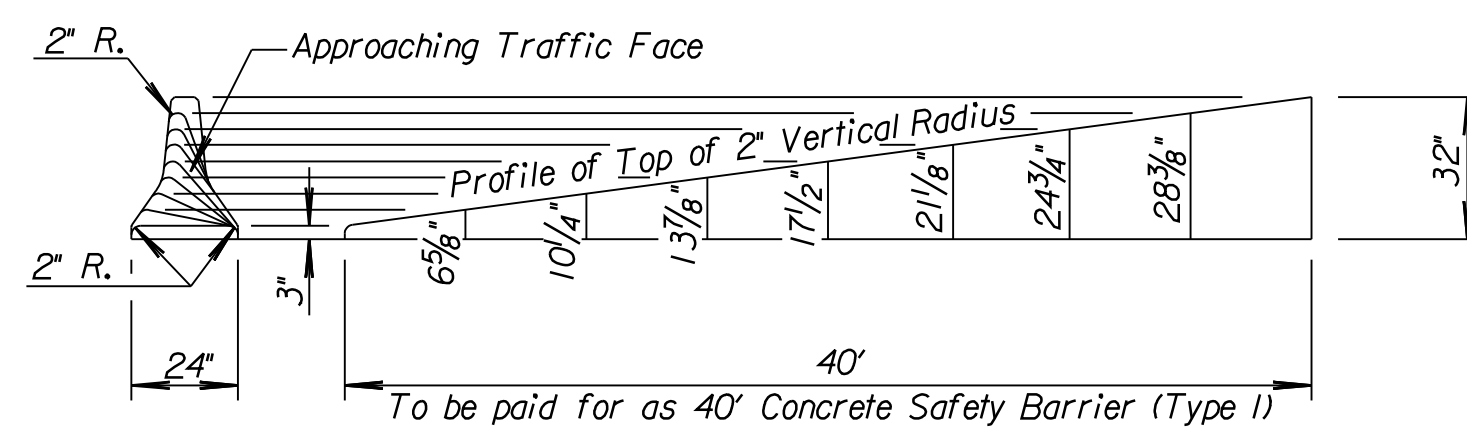
TRANSITION AT BRIDGE END



TRANSITION AT BRIDGE COLUMNS OR SIGN SUPPORTS

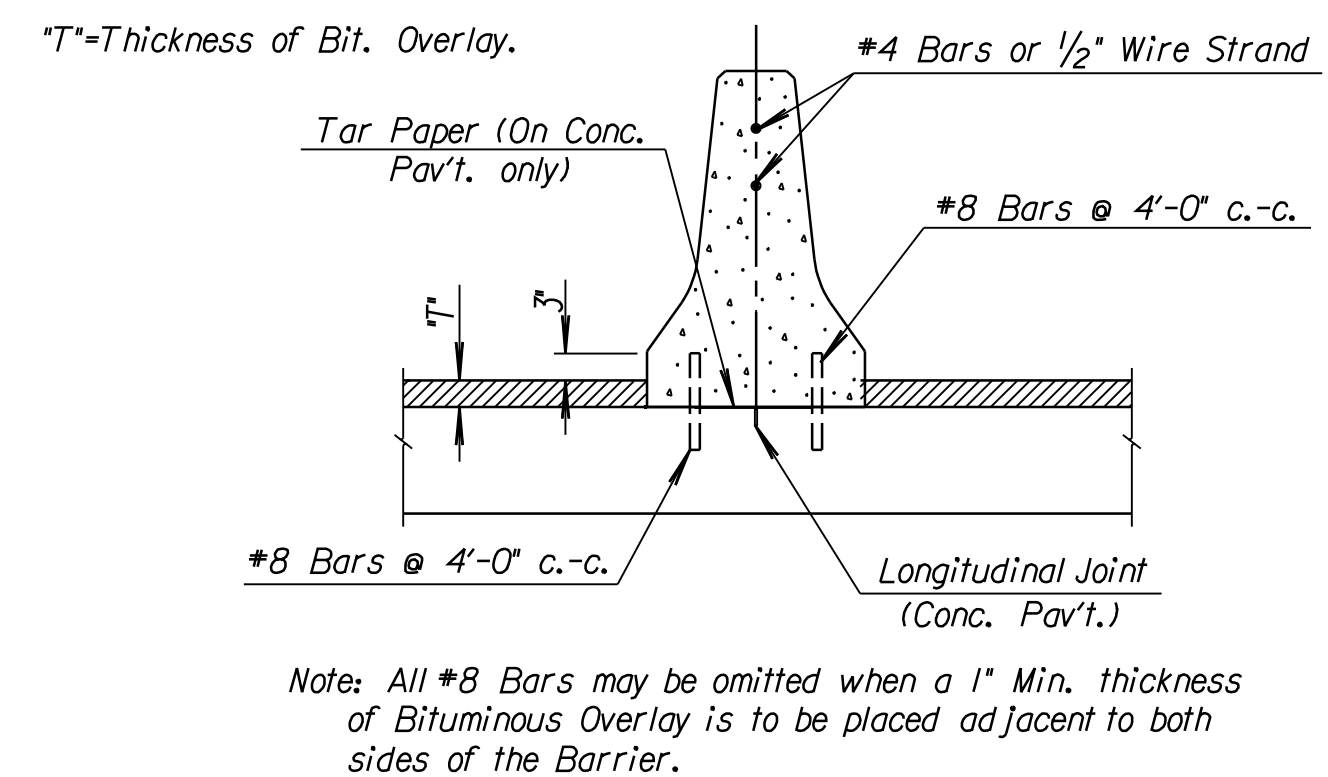


TYPE B BARRIER

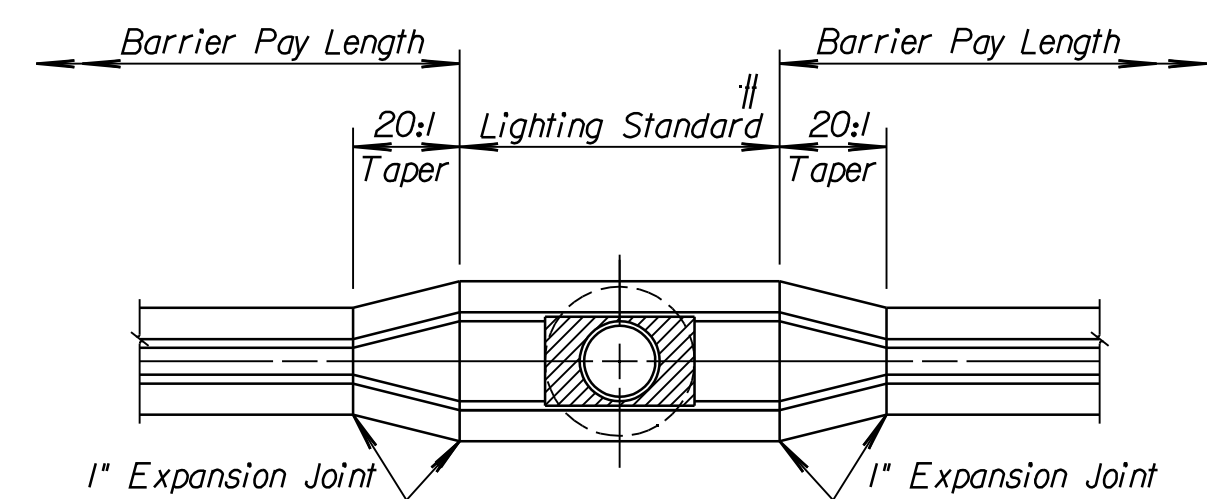


TYPE A BARRIER BARRIER TERMINAL TRANSITIONS

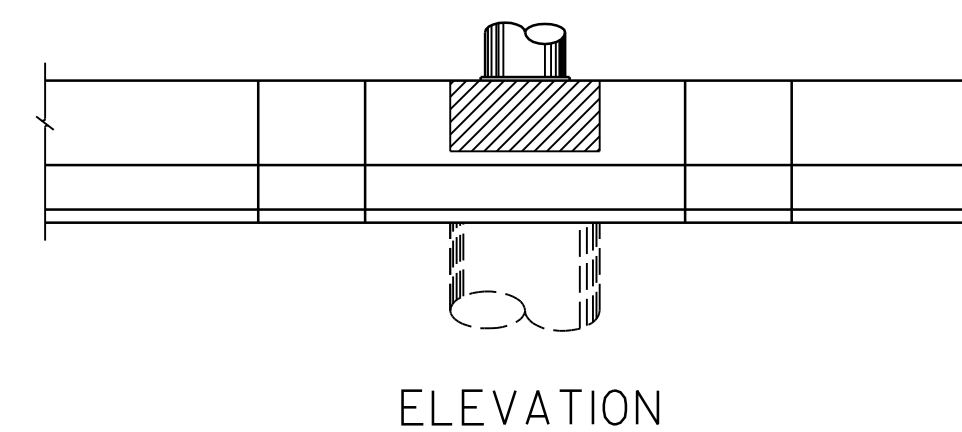
Note: Type A & B barrier transitions shall be used only for low speed (40 mph or less) applications or where a barrier terminates beyond the roadway clear zone. Where a barrier terminates within the clear zone of a high speed roadway, an appropriate impact attenuator shall be installed on the approach end.



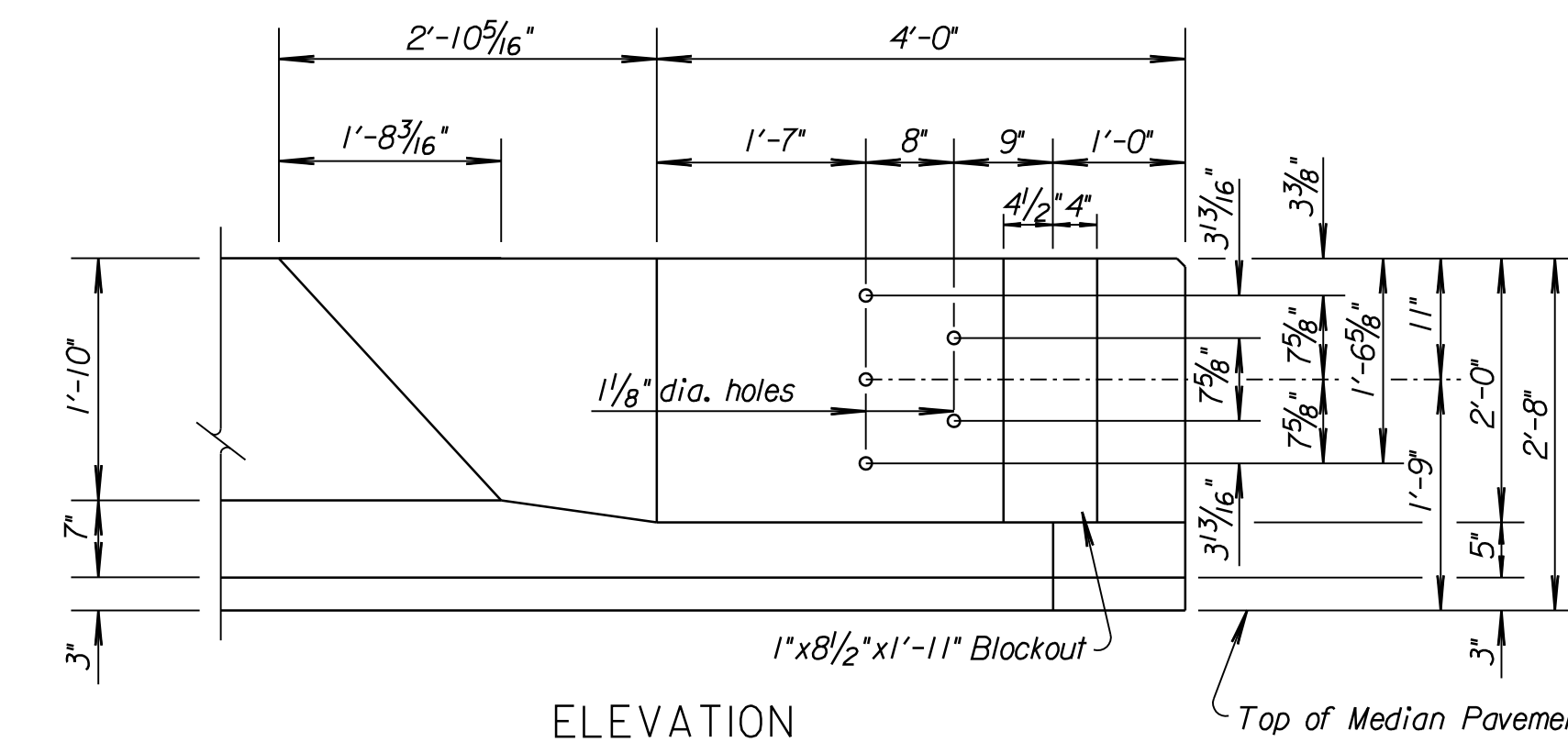
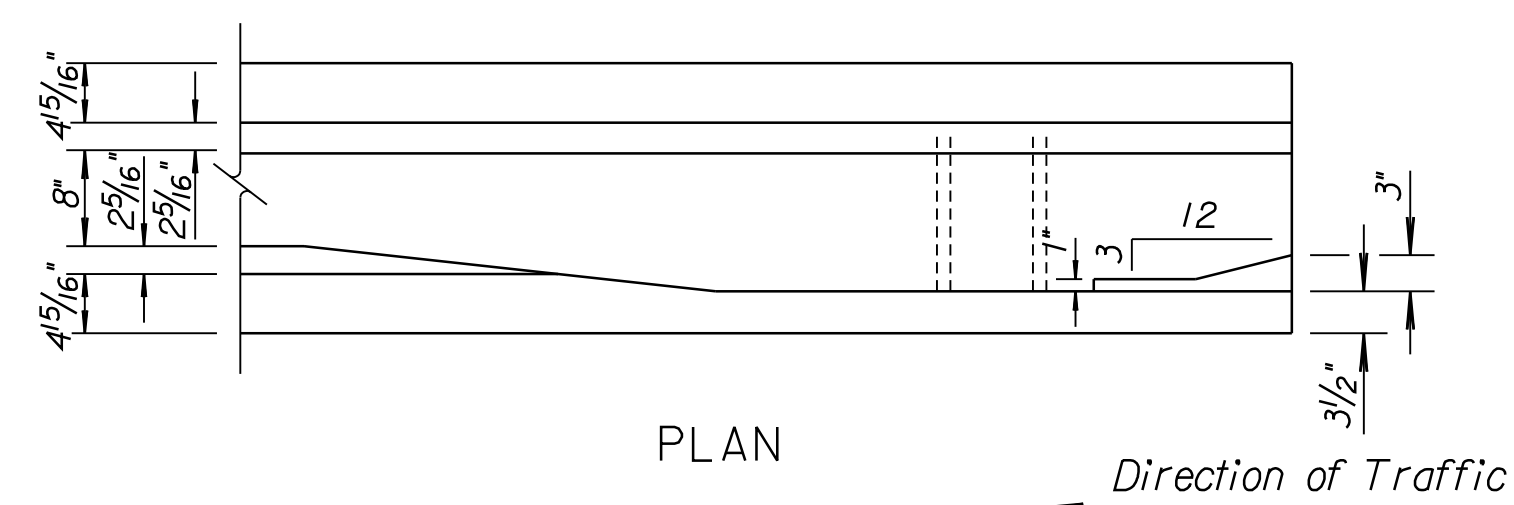
DETAILS FOR PLACING ON EXISTING PAVEMENT



TRANSITION AT ROADWAY LIGHT STANDARD BASE



TRANSITION AT ROADWAY LIGHT STANDARD BASE



GUARDRAIL ATTACHMENT TO SAFETY BARRIER (TYPE I)

Drawn By: Plotted: 11/24/2009  
File: K:\3575\ACADD\SHEETS\STANDARDS\KDOT\STD\RD625A.dgn

3					
2					
1	7-23-04	Revised guard fence to guardrail	S.W.K.	J.O.B.	
NO.	DATE	REVISIONS	BY	APP'D	

KANSAS DEPARTMENT OF TRANSPORTATION

RD625A

CONCRETE SAFETY BARRIER AUXILIARY DETAILS

FHWA APPROVAL	11-02-04	APP'D. James O. Brewer
DESIGNED	DETAILED	QUANTITIES
DESIGN CK.	DETAIL CK.	QUAN. CK.

TRACED Bowser  
TRACE CK. Seltz