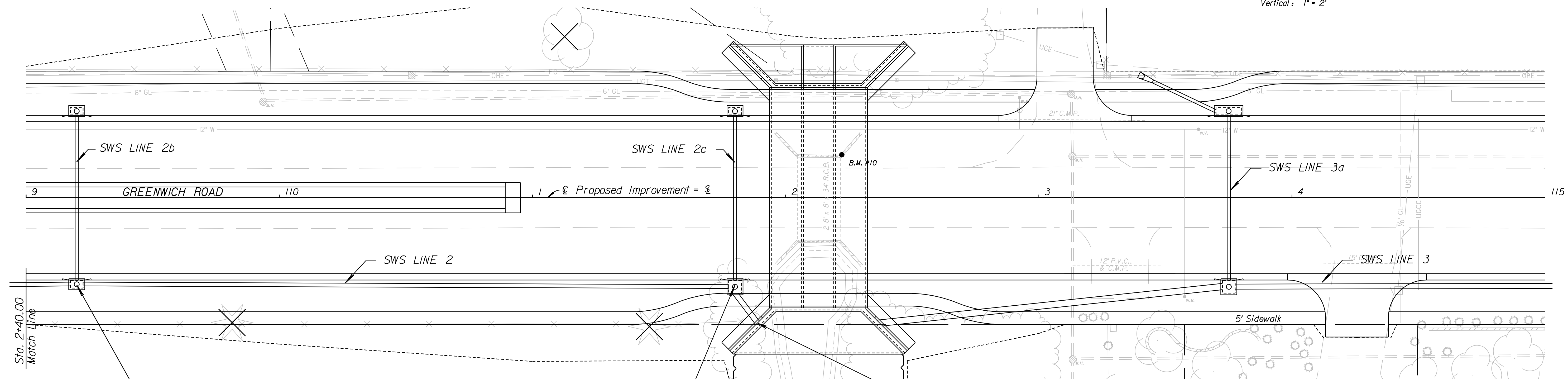


Scale
Horizontal: 1" = 20'
Vertical: 1" = 2'

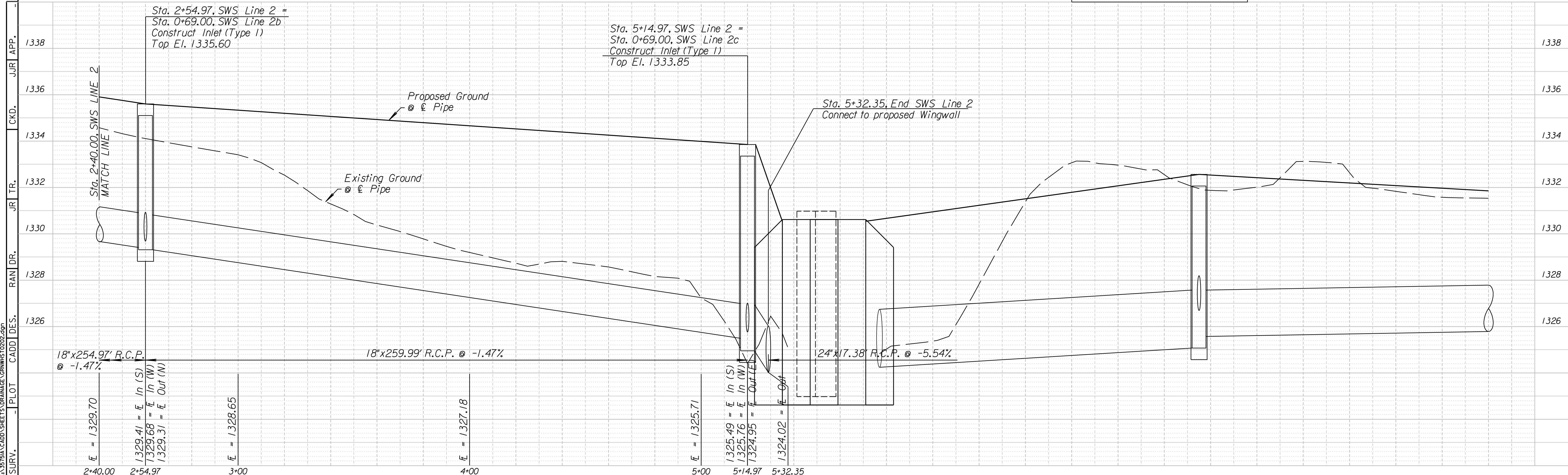


Sta. 2+54.97, SWS Line 2 =
Sta. 0+69.00, SWS Line 2b =
€ Sta. 109+20.00, 34.50' Rt.
Construct Inlet (Single)(Type 1)
(6'-4" x 4'-4")
Install 18" x 259.99'
Storm Sewer (RCP) (N)
See Sh. No's 90, 96 & 97 .

Sta 5+14.97, SWS Line 2 =
Sta. 0+69.00, SWS Line 2c =
€ Sta. 111+80.00, 34.50' Rt.
Construct Inlet (Single)(Type 1)
(6'-4" x 6'-4")
Install 24" x 17.38'
Storm Sewer (RCP) (E)
See Sh. No's 90, 96 & 97 .

Sta. 5+32.35, End SWS Line 2 =
€ Sta. 111+89.92, 49.42' Rt.
Connect to proposed Wingwall

B.M. #10 Chiseled "*" on R.C.B. hub guard
15' Lt. € Sta. 112+22.19 El. 1332.64



SURV. PLOT CADD DES. RAN DR. JRI TR. CKD. JJR APP.