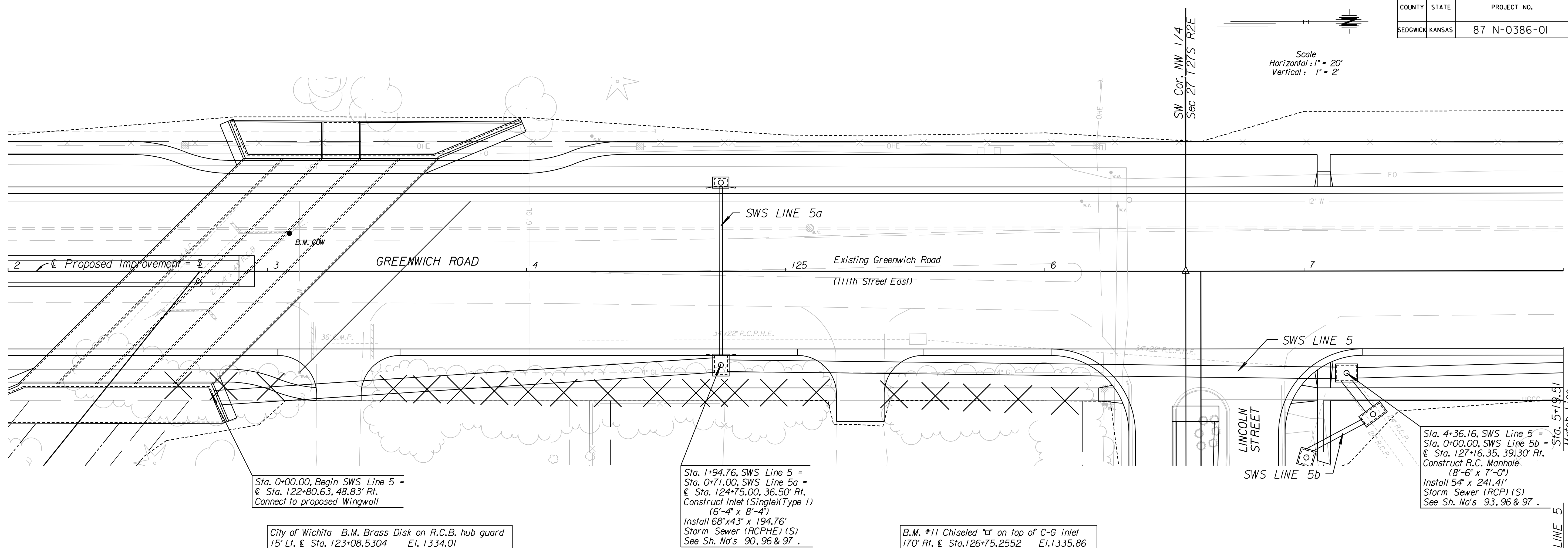


COUNTY	STATE	PROJECT NO.	YEAR	SHEET NO.	TOTAL SHEETS
SEDGWICK	KANSAS	87 N-0386-01	2009	77	255

Scale  
Horizontal: 1" = 20'  
Vertical: 1" = 2'



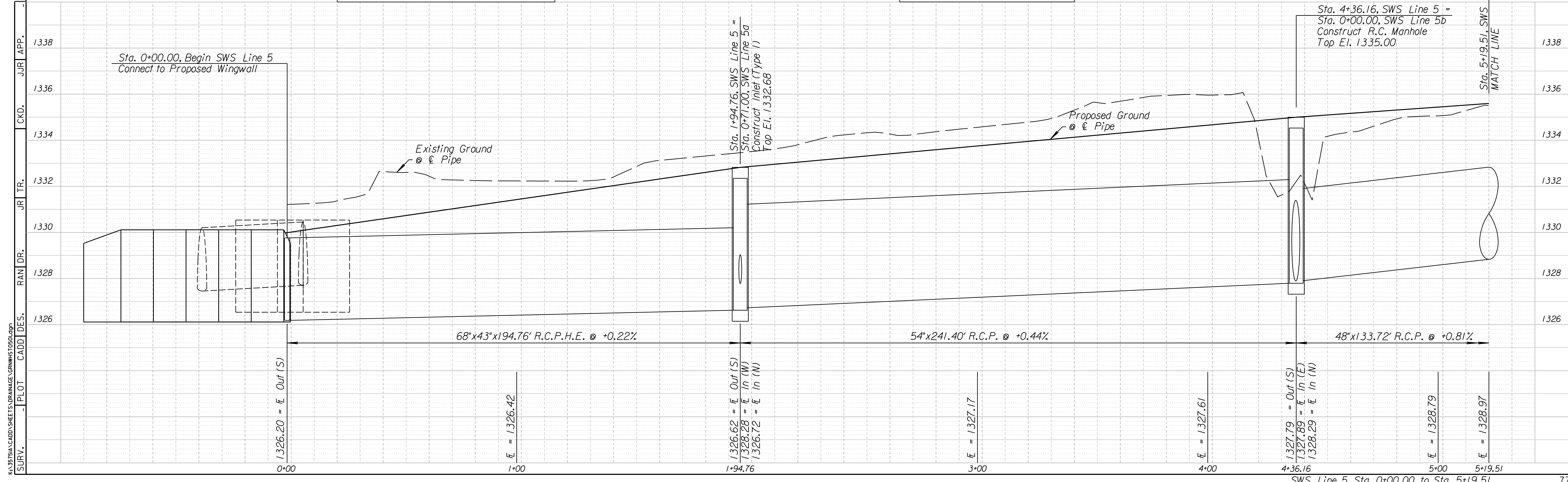
Sta. 0+00.00, Begin SWS Line 5 =  
@ Sta. 122+80.63, 48.83' Rt.  
Connect to proposed Wingwall

City of Wichita B.M. Brass Disk on R.C.B. hub guard  
15' Lt. @ Sta. 123+08.5304 El. 1334.01

Sta. 1+94.76, SWS Line 5 =  
Sta. 0+71.00, SWS Line 5a =  
@ Sta. 124+75.00, 36.50' Rt.  
Construct Inlet (Single) (Type 1)  
(6'-4" x 8'-4")  
Install 68"x43" x 194.76'  
Storm Sewer (RCPHE) (S)  
See Sh. No's 90, 96 & 97.

B.M. #11 Chiseled "C" on top of C-G inlet  
170' Rt. @ Sta. 126+75.2552 El. 1335.86

Sta. 4+36.16, SWS Line 5 =  
Sta. 0+00.00, SWS Line 5b =  
@ Sta. 127+16.35, 39.30' Rt.  
Construct R.C. Manhole  
(8'-6" x 7'-0")  
Install 54" x 241.41'  
Storm Sewer (RCP) (S)  
See Sh. No's 93, 96 & 97.



SURV. PLOT CADD DES. RAN DR. JR TR. CKD. JUR APP.

SWS Line 5 Sta. 0+00.00 to Sta. 5+19.51