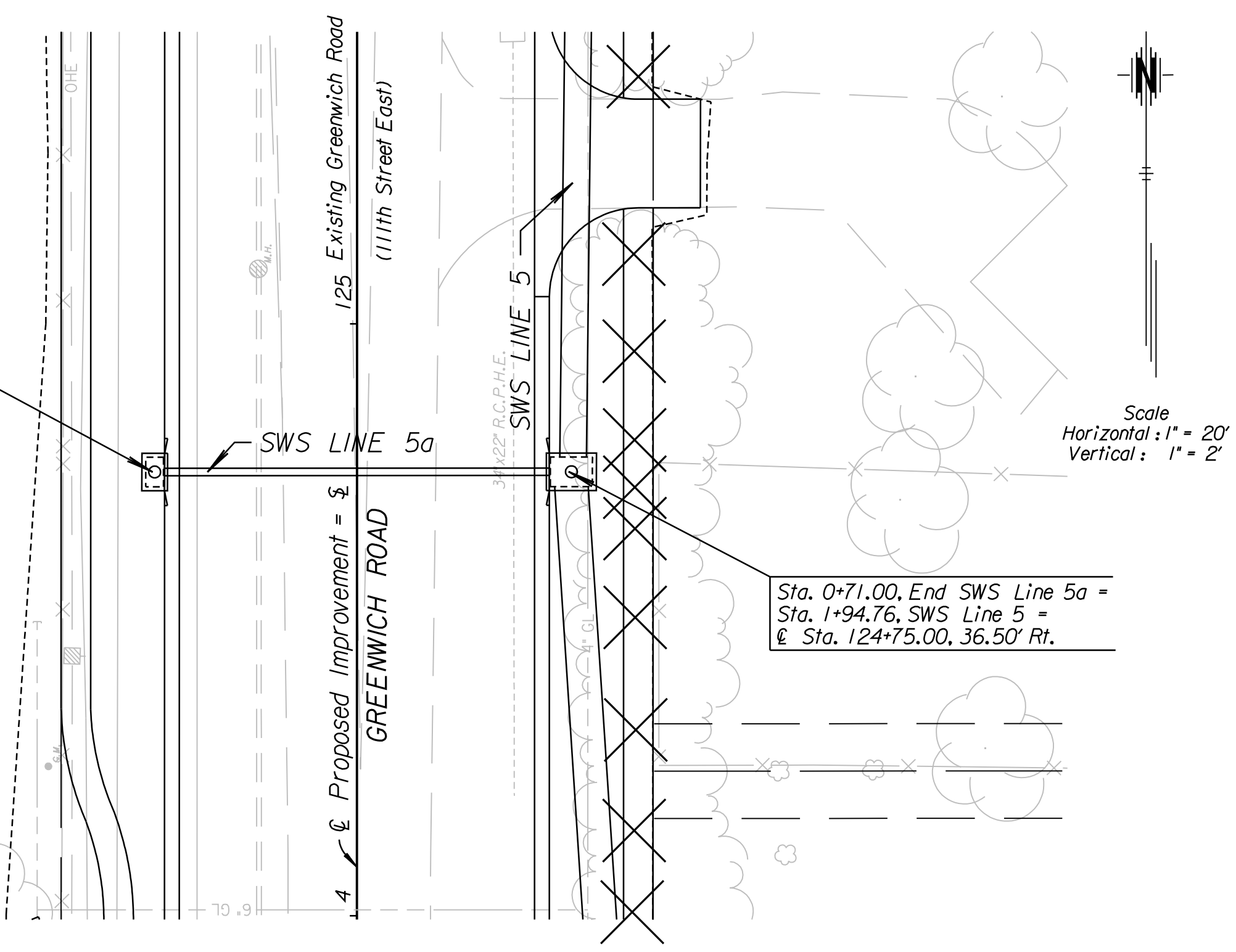


Sta. 0+00.00, Begin SWS Line 5a =
 @ Sta. 124+75.00, 34.50' Lt.
 Construct Inlet (Single) (Type 1)
 (6'-4" x 4'-4")
 Install 15' x 71.00'
 Storm Sewer (RCP) (E)
 See Sh. No's 90, 96 & 97.

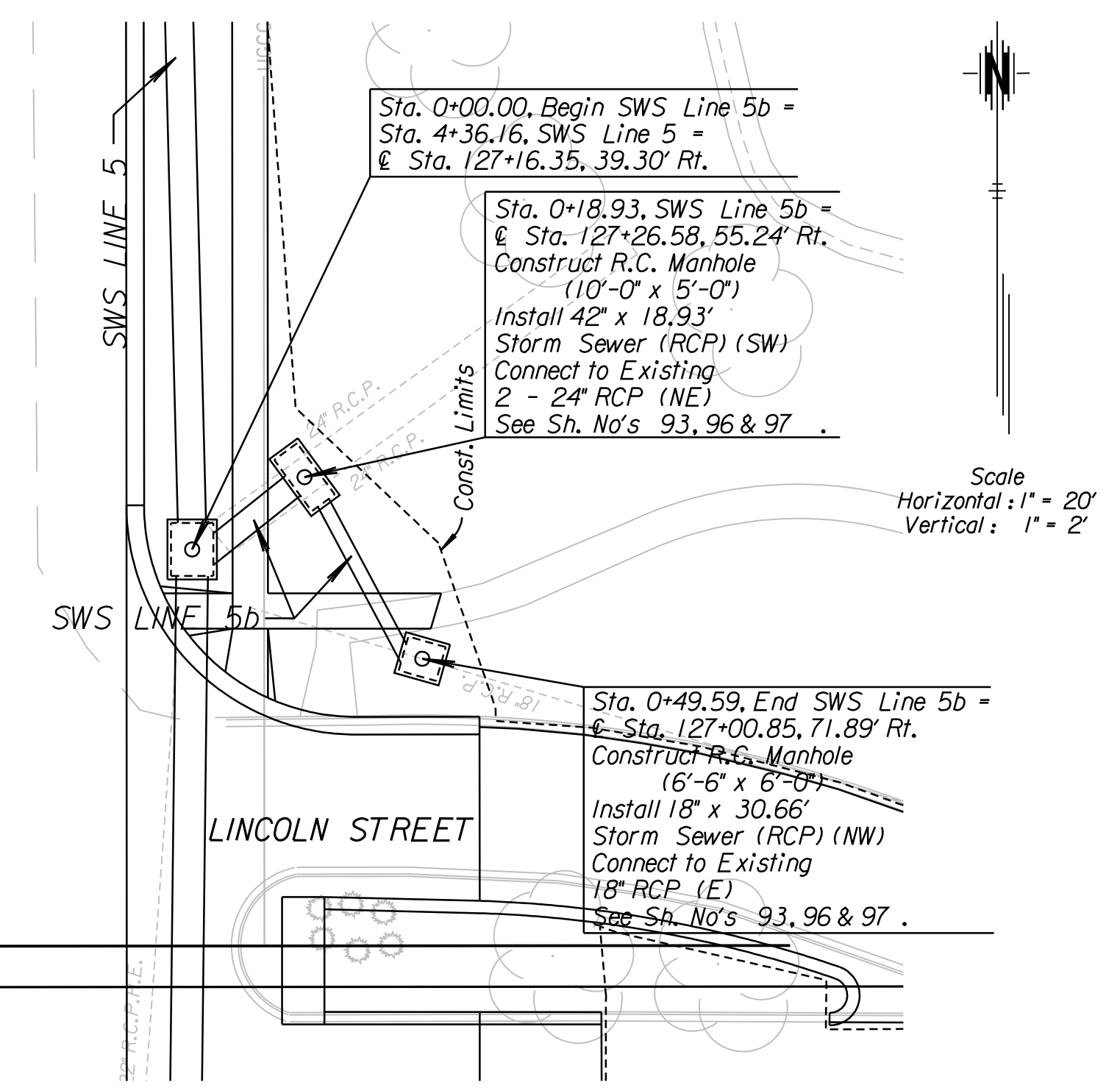


Sta. 0+71.00, End SWS Line 5a =
 Sta. 1+94.76, SWS Line 5 =
 @ Sta. 124+75.00, 36.50' Rt.

Scale
 Horizontal: 1" = 20'
 Vertical: 1" = 2'

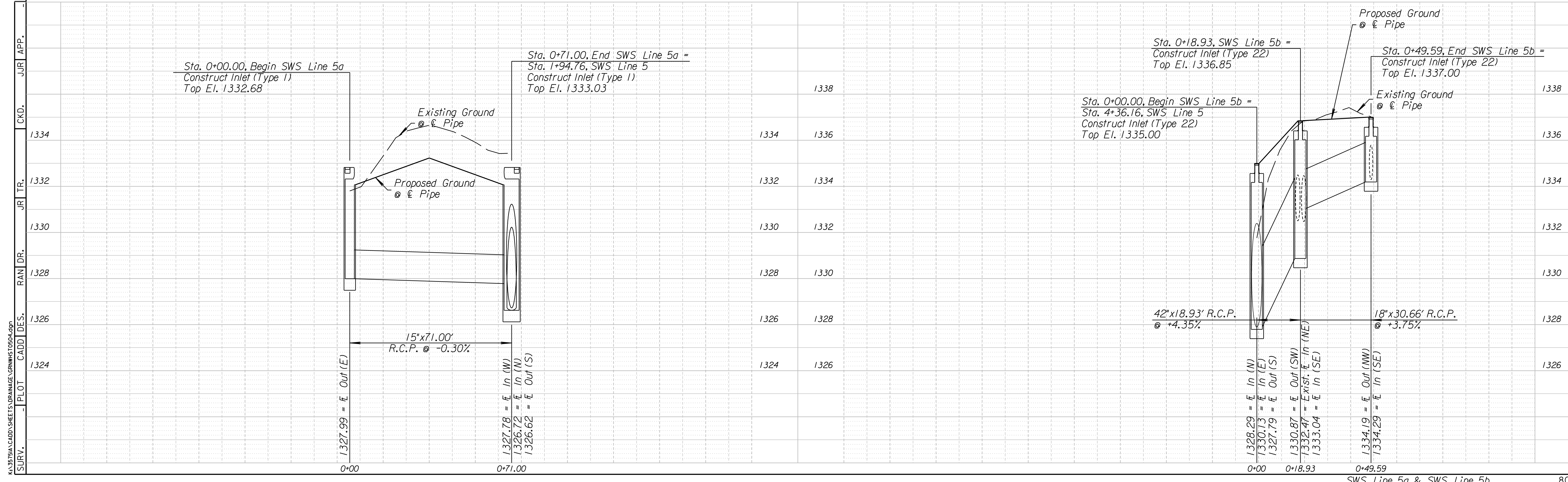
SW Cor. NW 1/4
 Sec 27 T27S R2E

Sta. 0+00.00, Begin SWS Line 5b =
 Sta. 4+36.16, SWS Line 5 =
 @ Sta. 127+16.35, 39.30' Rt.



Sta. 0+18.93, SWS Line 5b =
 @ Sta. 127+26.58, 55.24' Rt.
 Construct R.C. Manhole
 (10'-0" x 5'-0")
 Install 42" x 18.93'
 Storm Sewer (RCP) (SW)
 Connect to Existing
 2 - 24" RCP (NE)
 See Sh. No's 93, 96 & 97.

Scale
 Horizontal: 1" = 20'
 Vertical: 1" = 2'



SURV. PLOT CADD DES. RAN DR. JRI TR. CKD. JRI APP.