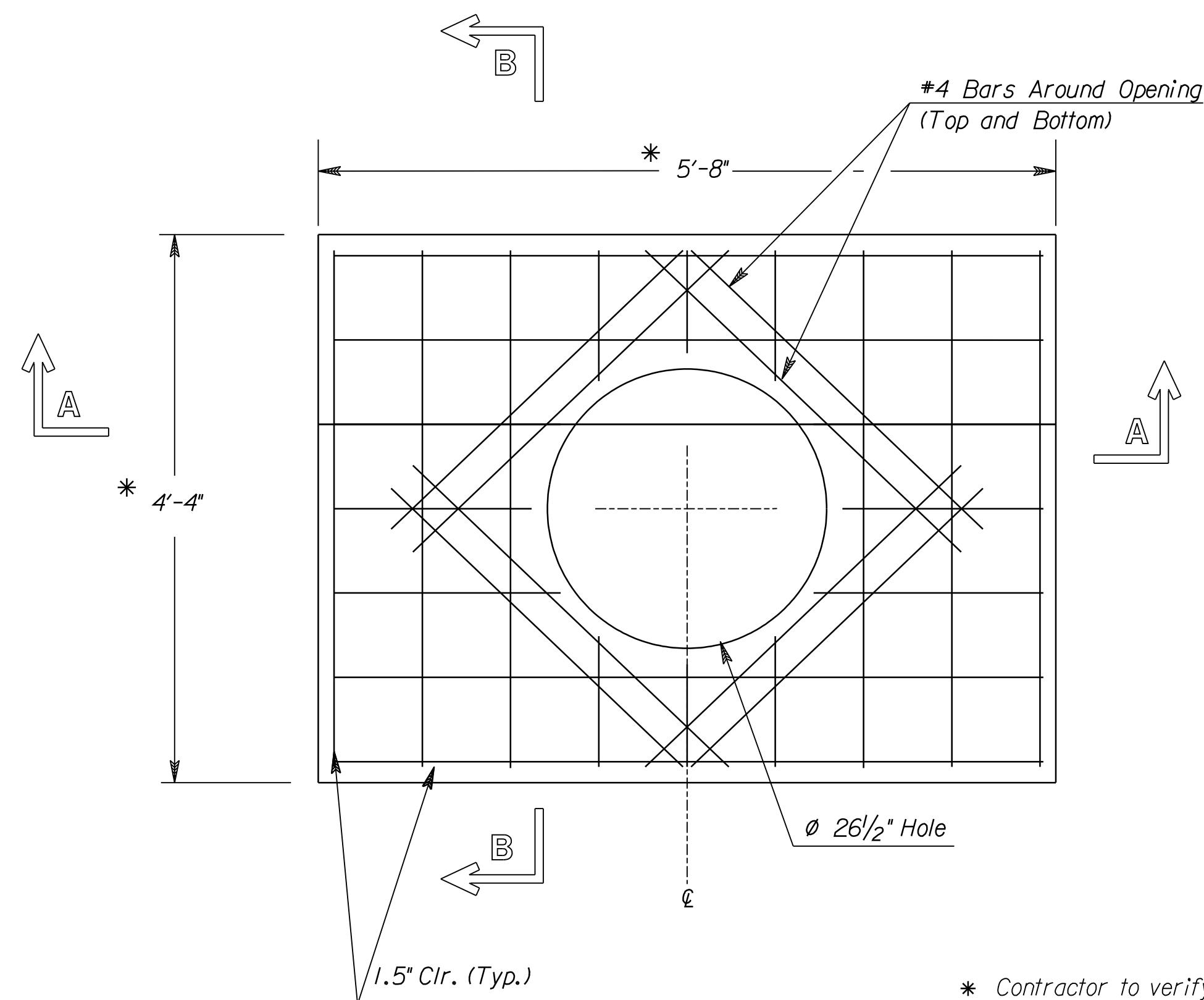
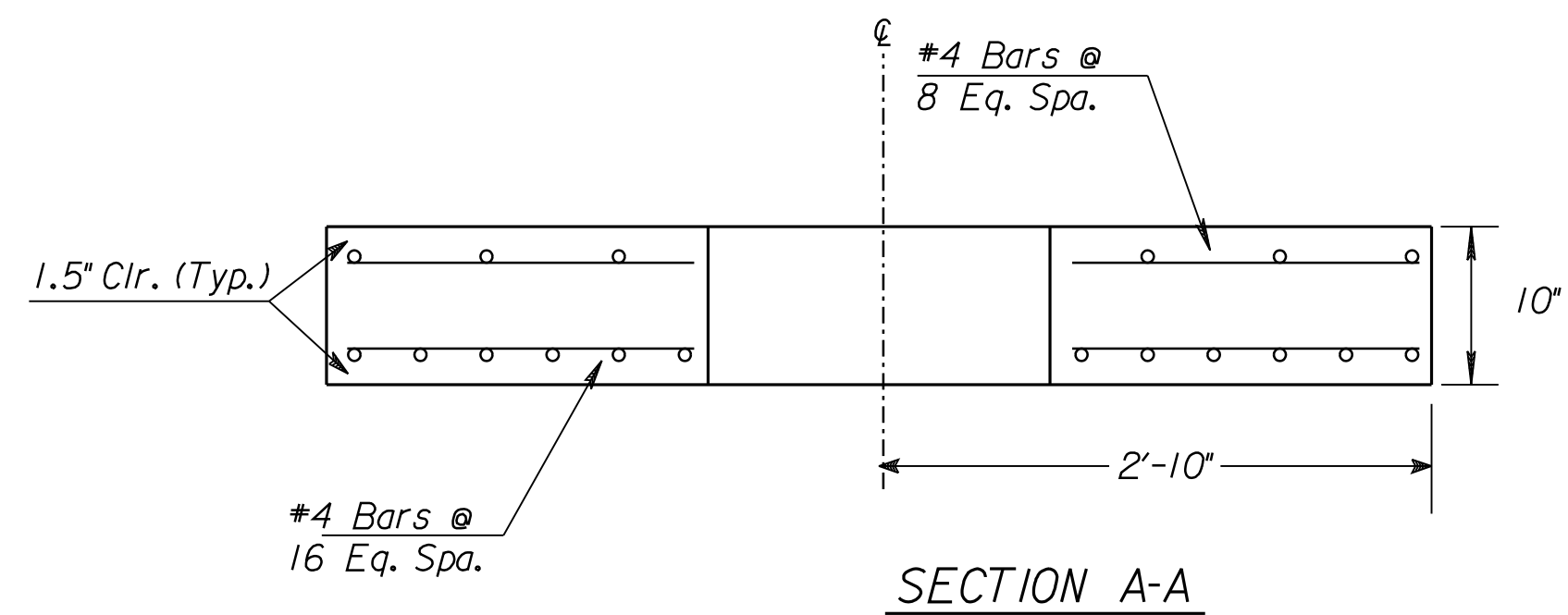
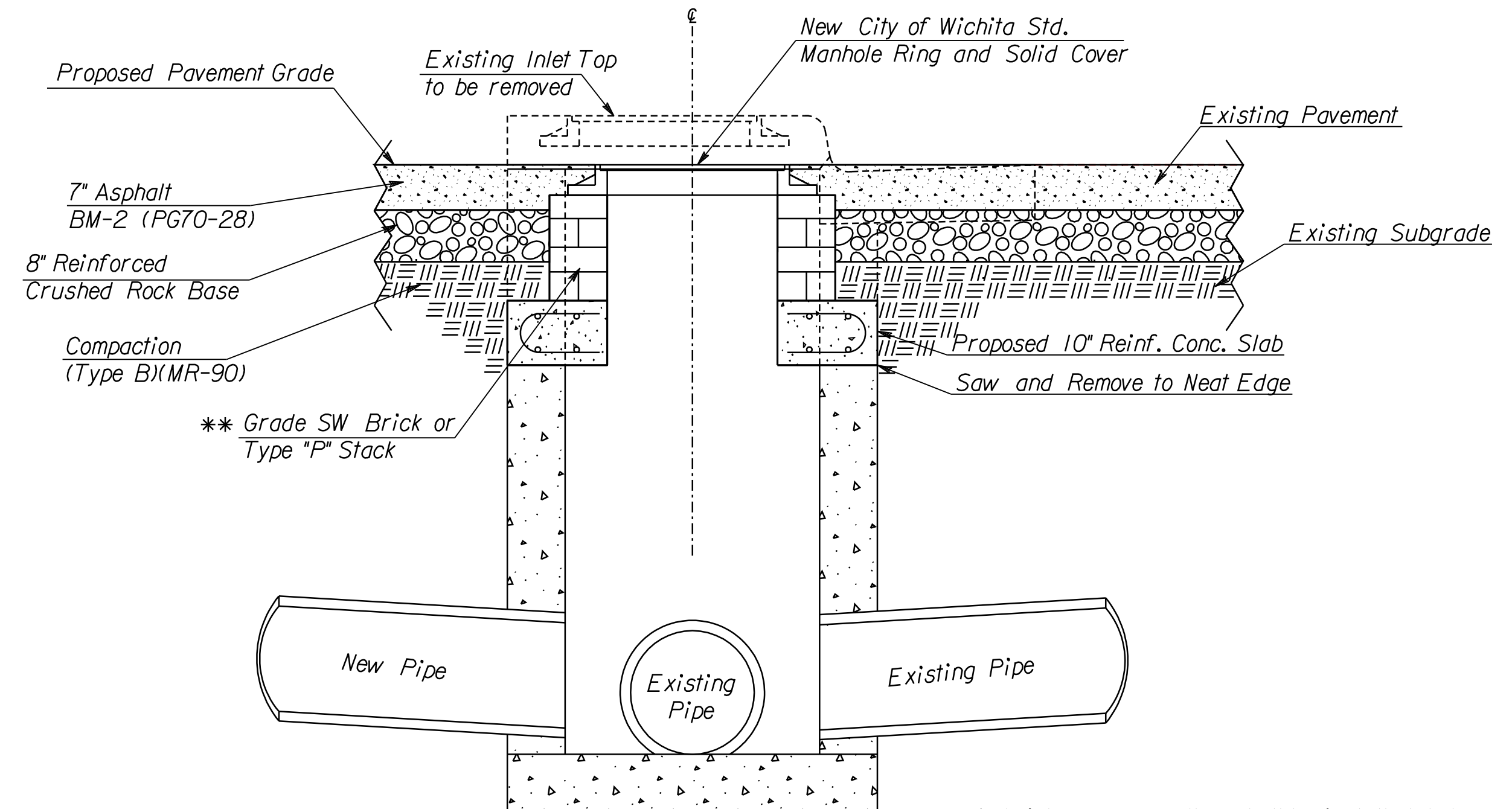


COUNTY	STATE	PROJECT NO.	YEAR	SHEET NO.	TOTAL SHEETS
SEDGWICK	KANSAS	87 N-0386-01	2009	95	255



\* Contractor to verify existing inlet dimensions prior to fabrication of pre-cast concrete slab.

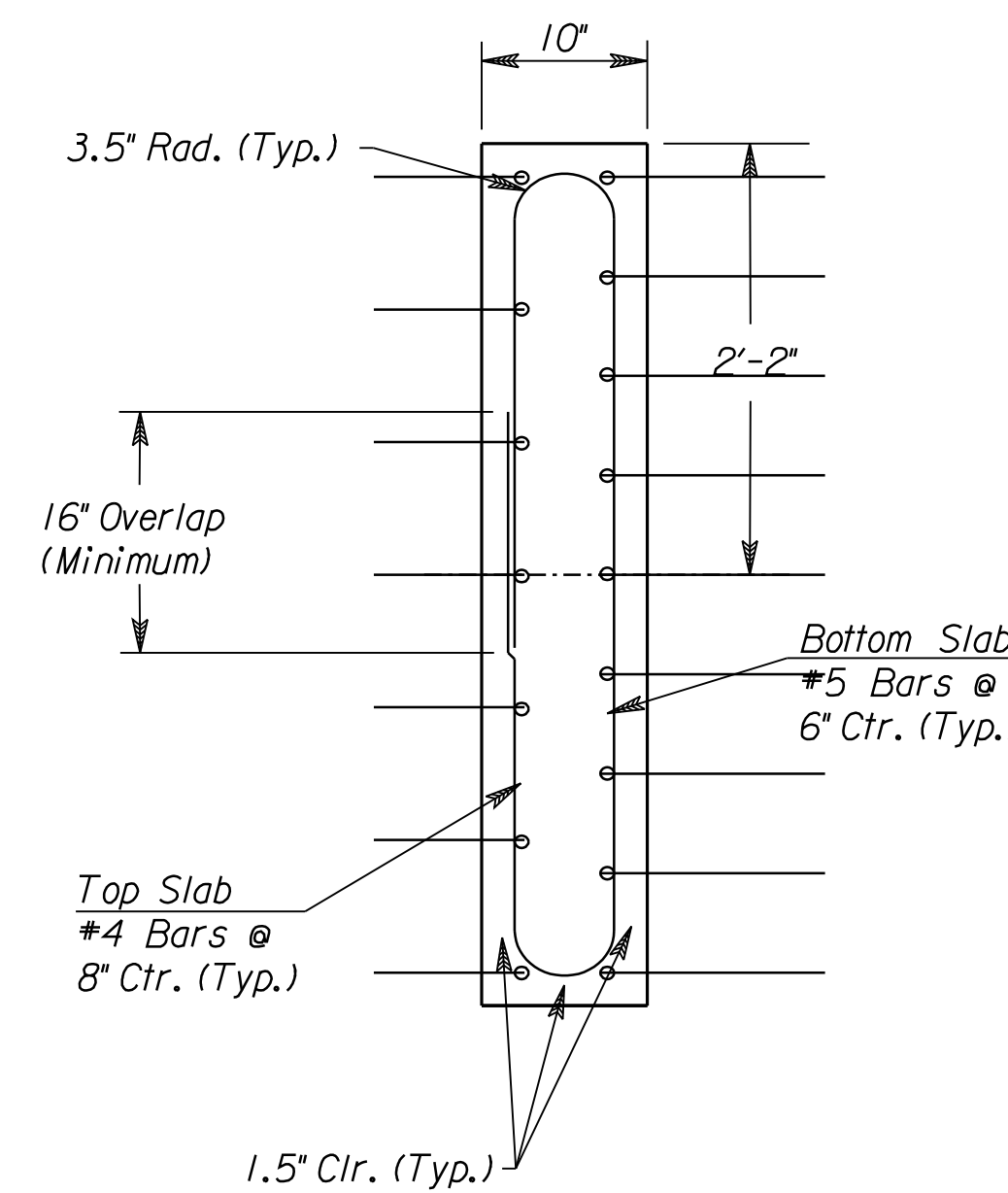
CONCRETE SLAB



NOTE: Slope top of Manhole to match Roadway.

\*\* A brick masonry collar shall be installed between the cast iron frame and the concrete slab as needed. The collar will have 8" walls and a vertical height of 6" minimum and 18" maximum. A 1" coat of mortar will be plastered on the outside of the collar. The use of pre-cast concrete spacers for manhole top adjustment is also allowed. Mortar used in masonry construction shall be Class III.

SECTION AT CENTER WALL



SECTION B-B

GENERAL NOTES

1. Concrete shall be Class I. All exposed edges shall be finished with an edging tool.
2. Concrete tops to be installed on thin mortar cushion to insure full support along inlet walls. Concrete tops may be cast in place or precast.

CITY OF WICHITA		
GREENWICH ROAD		
RETROFIT		
INLET TO MANHOLE		
SCALE	DATE	DWG NO.
	8/25/2009	35751A